

Brunswick Fire Department

2024 Presentation



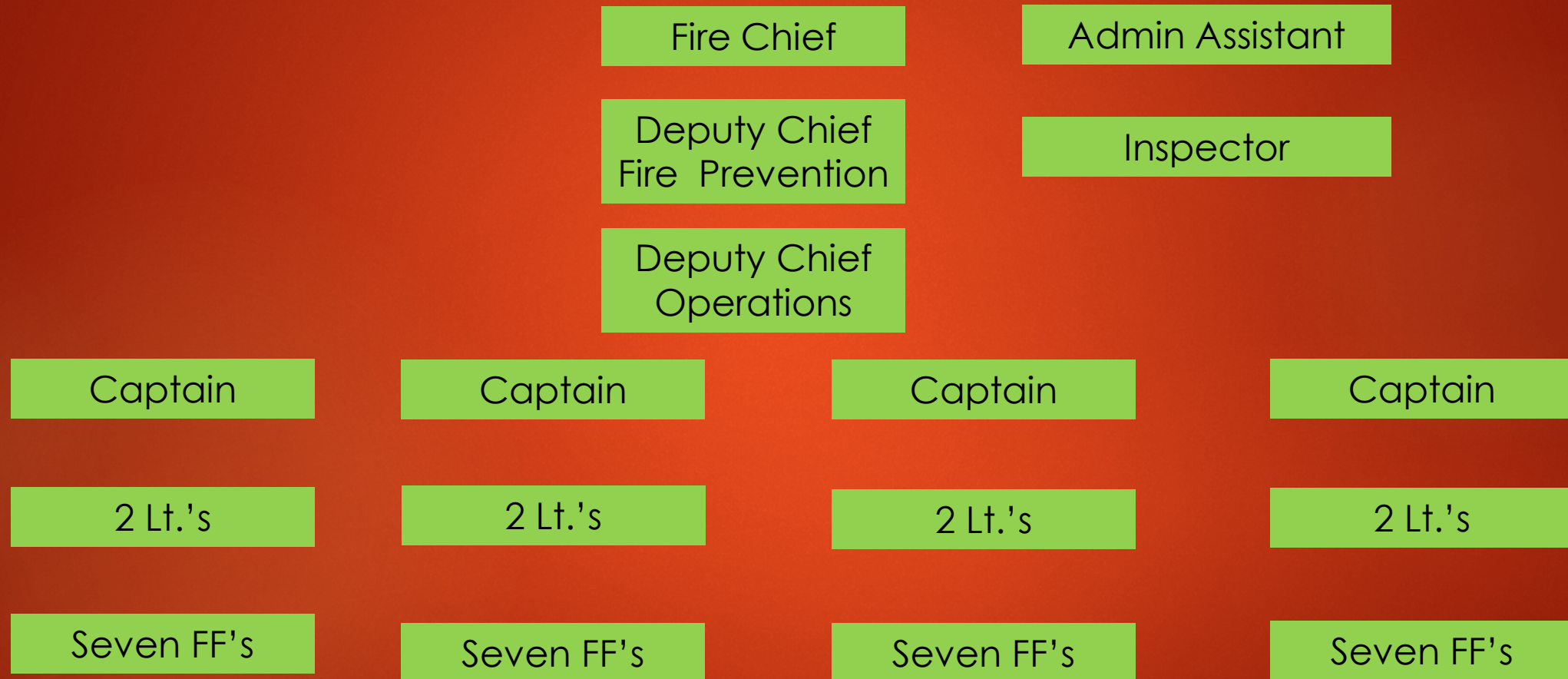
► STAFFING

- CHIEF
- 2 DEPUTIES
- -1 Fire and Life Safety Inspector
- 1 ADMIN ASSISTANT
- 40 CAREER FIREFIGHTERS (4 SHIFTS OF 10)

PROVIDE FIRE PROTECTION, EMS, HAZ MAT, HIGH ANGLE RESCUE, CONFINED SPACE RESCUE, ICE AND WATER RESCUE, FIRE INSPECTIONS, FIRE PREVENTION AND FIRE INVESTIGATION, EMERGENCY MANAGEMENT

Brunswick Fire Department

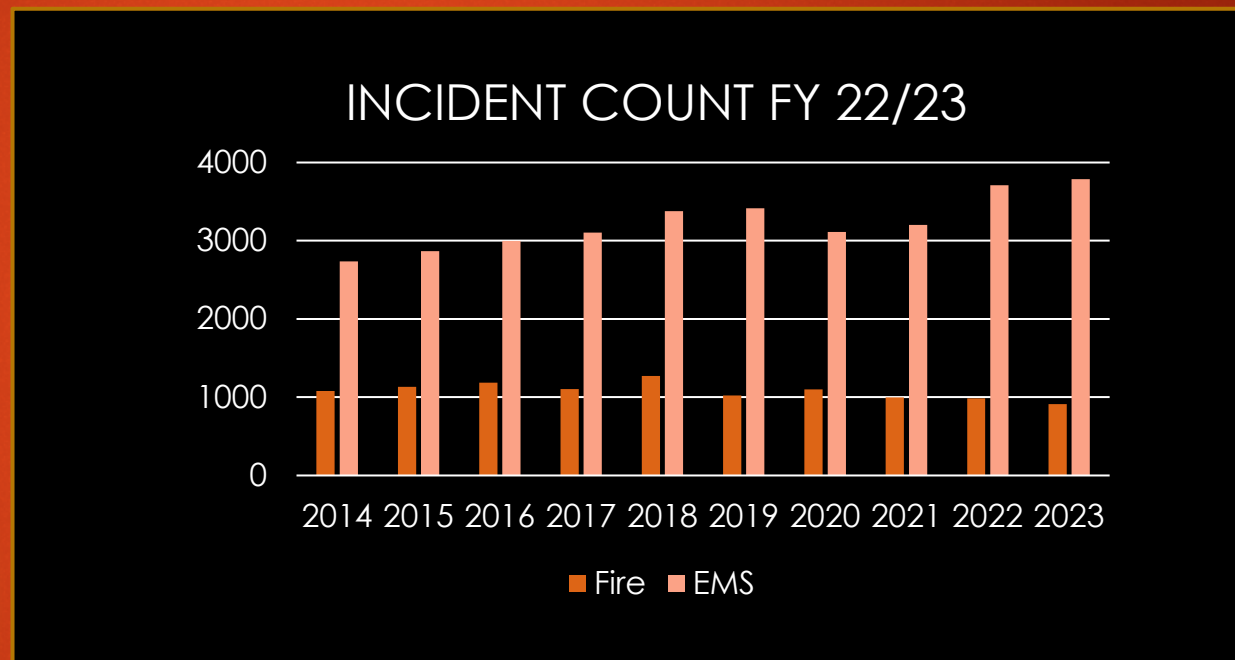
2024 Presentation





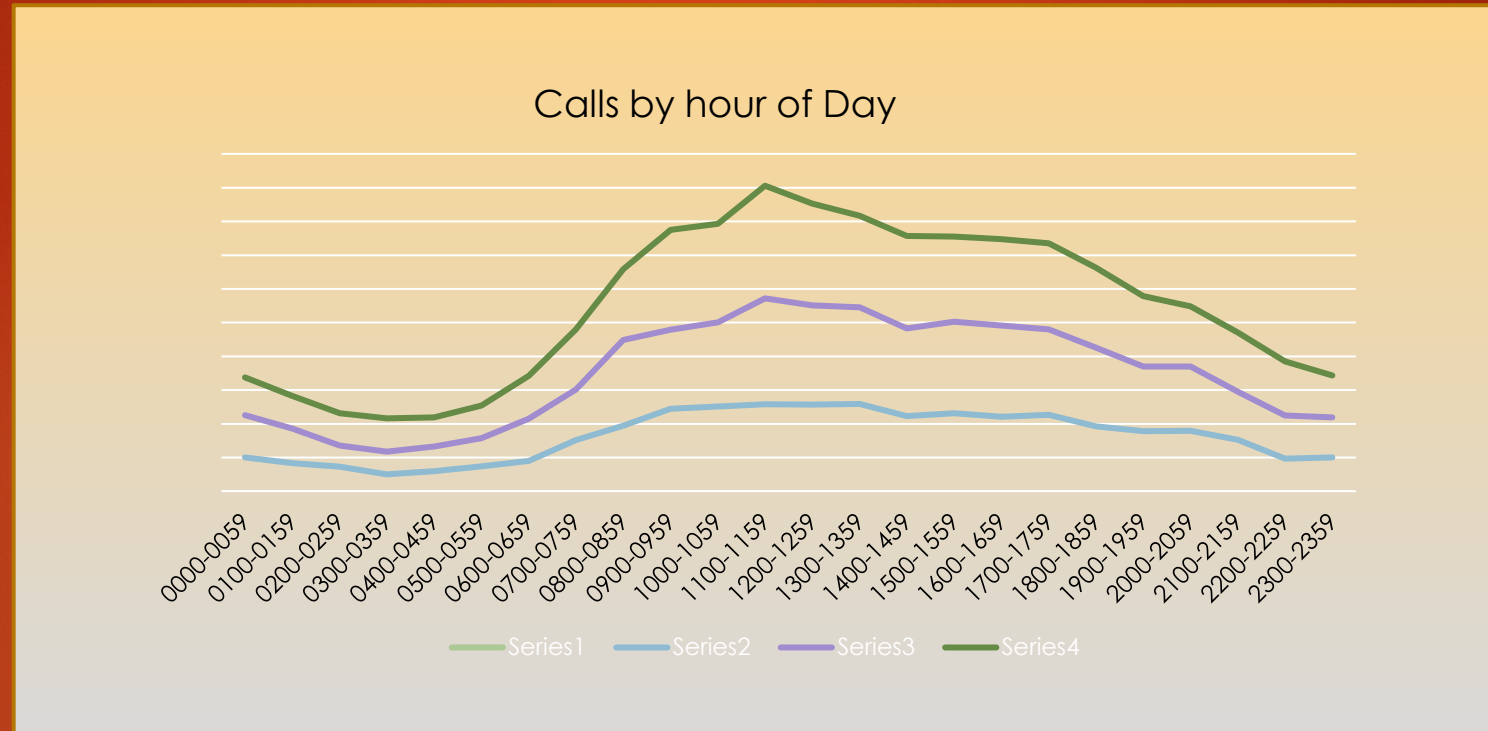
CALL STATS FISCAL YEAR

| | FIRE | EMS |
|------|-------|-------|
| 2014 | 1,078 | 2,736 |
| 2015 | 1,134 | 2,867 |
| 2016 | 1,184 | 2,997 |
| 2017 | 1,105 | 3,103 |
| 2018 | 1,271 | 3,379 |
| 2019 | 1,021 | 3,415 |
| 2020 | 1,099 | 3,110 |
| 2021 | 999 | 3,201 |
| 2022 | 985 | 3,707 |
| 2023 | 914 | 3,786 |



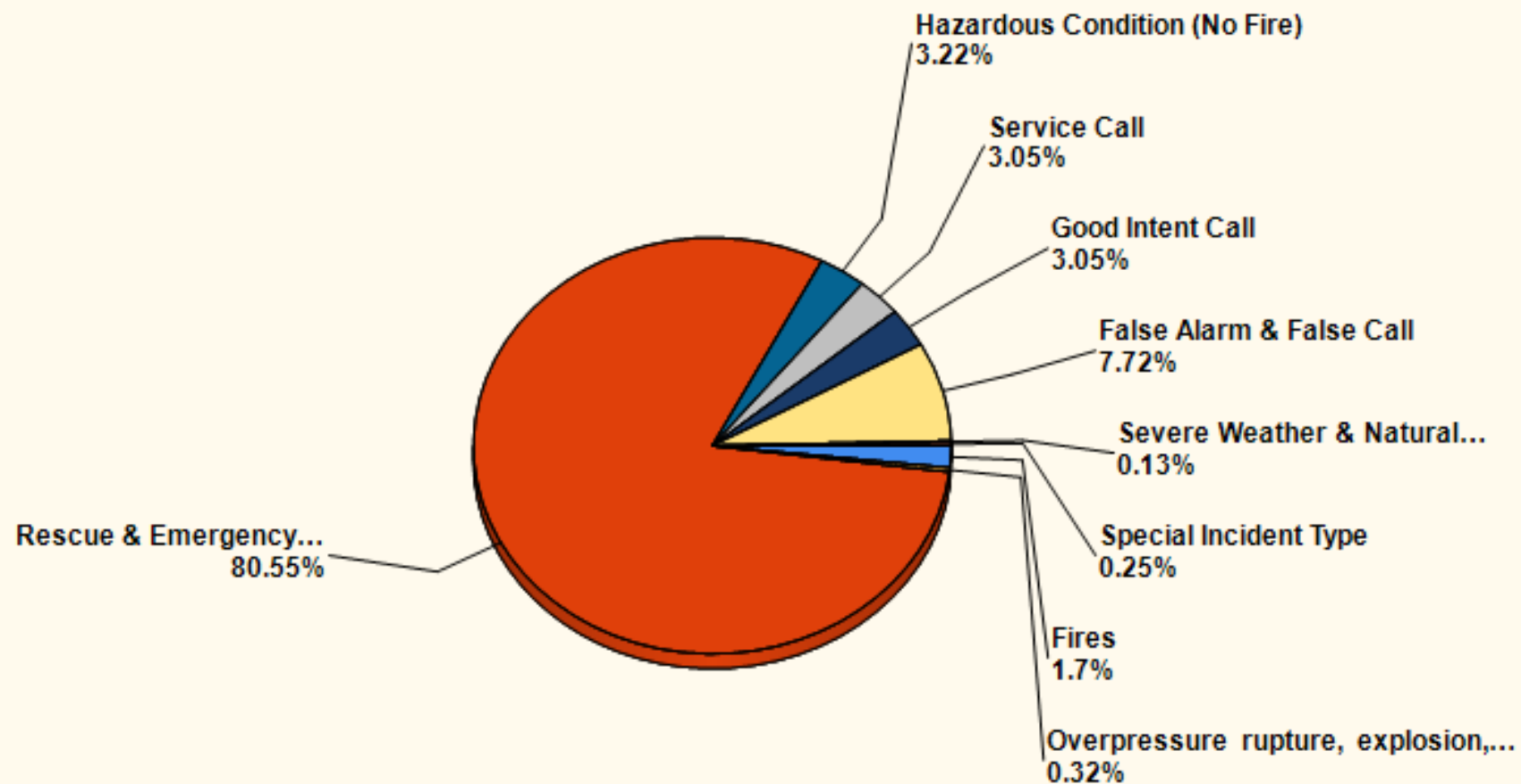
Delta and Echo calls totaled 713 for FY 22/23

Calls for Service by hour of the Day

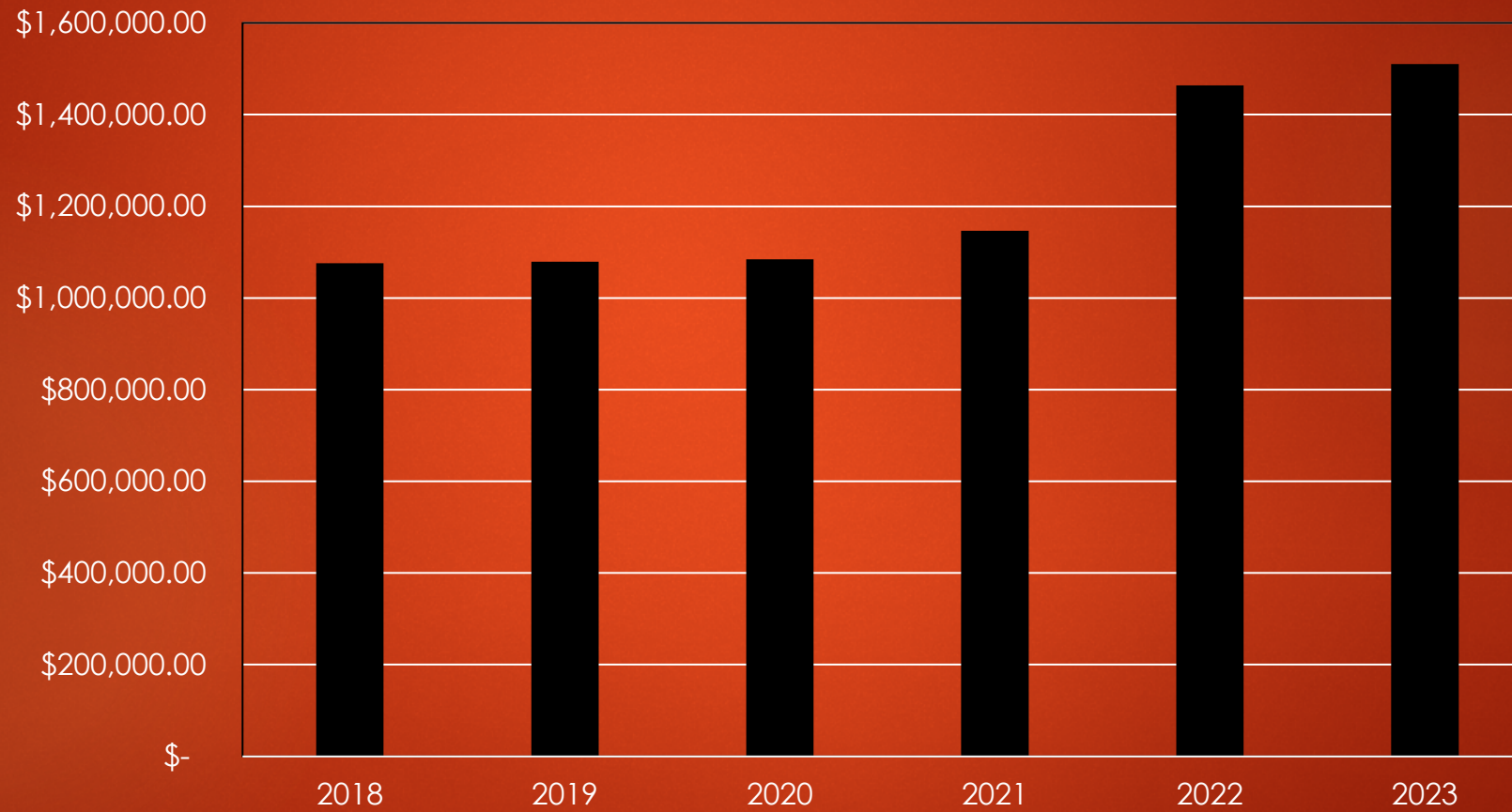




Breakdown by Major Incident Type FY 2022-2023



Ambulance Revenue





STAFFING COMPARISON

| Municipality | Population | Calls | Sq Miles | Firefighters | FF's/1,000 |
|------------------|---------------|--------------|-----------|--------------|------------|
| So. Portland | 27,000 | 5,459 | 12 | 68 | 2.5 |
| Auburn | 24,061 | 6,318 | 65 | 64 | 2.7 |
| Augusta | 19,220 | 8,277 | 55 | 64 | 3.3 |
| Sanford | 21,000 | 4,446 | 47 | 50 | 2.4 |
| Biddeford | 22,500 | 5,428 | 30 | 48 | 2.1 |
| Westbrook | 21,000 | 4,725 | 17 | 44 | 2.1 |
| Scarborough | 24,000 | 6,061 | 47 | 44 | 1.8 |
| Saco | 21,326 | 4,254 | 38 | 40 | 1.9 |
| Brunswick | 21,756 | 4,700 | 46 | 40 | 1.8 |



Staffing Goals

- Goal is 12 to 14 on shift
 - Overall have seen steady increase in call volume over 20 years
 - Not Getting Callback personnel for station coverage
 - NAS Fire had 21 on a shift, Engine company of 4 whenever we needed it
 - Multiple over lapping calls
 - FY 20 1272 overlapping calls, 32.02%
 - FY 21 1317 overlapping calls, 33.32%
 - FY 22 1629 overlapping calls, 36.35%
 - FY 23 1650 overlapping calls, 34.99%
- Transporting EMS Patients to MMC
 - FY 21 274
 - FY 22 355
 - FY 23 203
- Longer transport and turn around time.
- EMS Protocol changes requiring more people for long periods of time
- Brunswick Landing more area and more buildings (FY 23 was 495)



Needs for the Department

1. Full time EMS Director
 1. 80% to 85% of calls are EMS
 2. More continuity for
 1. QA/QI of runs
 2. Continuing Education for crews while on duty
 3. Better oversight of skills, medication boxes, supplies
2. Full time Mechanic
 1. Fleet getting older
 - More expensive to maintain
 - Harder to get things scheduled
 2. Need for more extensive preventative maintenance



Needs for the Department

1. Full time EMS Director
 1. 80% to 85% of calls are EMS
 2. More continuity for
 1. QA/QI of runs
 2. Continuing Education for crews while on duty
 3. Better oversight of skills, medication boxes, supplies
2. Full time Mechanic
 1. Fleet getting older
 - More expensive to maintain
 - Harder to get things scheduled
 2. Need for more extensive preventative maintenance



Needs for the Department

1. Full time EMS Director
 1. 80% to 85% of calls are EMS
 2. More continuity for
 1. QA/QI of runs
 2. Continuing Education for crews while on duty
 3. Better oversight of skills, medication boxes, supplies
2. Full time Mechanic
 1. Fleet getting older
 - More expensive to maintain
 - Harder to get things scheduled
 2. Need for more extensive preventative maintenance



Tower 1 Replacement

- 2006 Pierce Aerial
- Only Aerial Device we have
- Lots of technology on the truck
- Scheduled replacement 2025-26
- **Estimated 40 month build**
- Estimated Cost \$2,500,000

