

Brunswick Parks & Recreation

Spring-Summer 2024

Brochure



Brunswick
maine



brunswickme.org/parks-recreation | 207.725-6656
recprograms@brunswickme.org
220 Neptune Drive Brunswick, Maine 04011

Table of Contents

Page 2	<u>Parks and Recreation Department Staff Contact Information</u>	Page 26-53	<u>Youth Programming</u>
Page 3	<u>Policies & Procedures</u>	Page 54-59	<u>Events</u>
Page 5	<u>Online Registration</u>	Page 60-61	<u>Coffin Pond & Discount Tickets</u>
Page 6-7	<u>Hours of Operation</u>	Page 62-63	<u>Child Care</u>
Page 8-13	<u>Recreation Center Membership & Facility Information</u>	Page 64-65	<u>Parks & Facilities</u>
Page 14-17	<u>Health & Fitness Classes</u>	Page 66-69	<u>Midcoast Athletic and Recreation Complex (MARC)</u>
Page 18-25	<u>Adult Sports & Leagues</u>	Page 70-71	<u>Community Services</u>
		Page 72-73	<u>Get Involved & Sponsorships</u>

Parks and Recreation Staff

Thomas M. Farrell

Director of Parks and Recreation
tfarrell@brunswickme.org

Dennis Wilson

Parks and Facilities Manager/Town Arborist
dwilson@brunswickme.org

Brittany Lucas

Financial Administrative Assistant
blucas@brunswickme.org

David Coffill

Recreation Programmer
dcoffill@brunswickme.org

Dakota Jenkins

Child Care Director
djenkins1@brunswickme.org

Sabrina M. Best

Deputy Director of Parks and Recreation
sbest@brunswickme.org

Aaron Cropley

Recreation Program Manager
acropley@brunswickme.org

Laurie Grinnan

Fitness & Facility Coordinator
lgrinnan@brunswickme.org

Priscilla Trimble

Health and Fitness Director
ptrimble@brunswickme.org

Welcome Center Staff

Rodrigue Mwenge

rodrigue@ircofmaine.org

General Policies

Registration: Registration can occur either in person at the Recreation Department, over the phone, by mail OR online at www.brunswickme.org/parks-recreation

Registration Process: Pre-registration and pre-payment are required for all classes. Programs registrations are accepted in person, mail, online, or over the phone. Payment is expected prior to the start of the first class date.

Payment: Full payment is required at the time of registration for classes.

Residents: Participants who live in Brunswick.

Non-Residents: Participants who do not live in Brunswick must pay 33% more per class registration.

Confirmations: We do not send course confirmations or reminders of enrollment. If you register for a program, you are responsible for knowing class dates, times, and location.

Discounts: Sibling discounts are available for Brunswick Youth Soccer League and for Summer Camp.

Refund Policy: The Brunswick Parks and Recreation Department seeks to provide high quality facilities and program opportunities for leisure time activities for all Brunswick residents. The user fees that are collected through these programs go directly toward the cost of operation. This allows us to keep our rates fair and reasonable while still delivering a high quality product. In many cases, expenses are incurred prior to the start of a program, which is why we have outlined the refund policy below.

- ⇒ If we cancel a program, all fees will be refunded. If a program does not take place due to cancellation by the Parks and Recreation Department, all registration/user fees will be refunded in full.
- ⇒ If you withdraw 2 business days before the first session of a program (excluding weekends and holidays) you will receive a full refund (less a \$5 handling fee). Example: If a program is scheduled to begin on a Wednesday, to receive a full refund (minus the handling fee) you must withdraw before the end of business on Monday. If Monday is a town recognized holiday and our offices are closed then withdrawal must take place before the end of business on the previous Friday.
- ⇒ If you withdraw less than 2 business days prior to the start of or after the first session of a program, you will be refunded 75% of the registration fee (less a \$5 handling fee). Example: If the program is scheduled for Wednesday afternoons, any withdrawals that take place at the start of business on the Tuesday morning before the first session through the close of business on the Tuesday prior to the second session will be eligible for this refund.
- ⇒ If you withdraw on (or after) the day of the second session, no refund will be issued.
- ⇒ For one-day special events you must withdraw no less than 2 business days prior to the start of the program to receive a full refund (less a \$5 handling fee). There will be no refunds issued for requests later than that.
- ⇒ In the event of an extended illness or injury, we will issue a prorated refund after the start of a program. We must receive written notification, along with a physicians note excusing the participant from continuing. All documentation must be received before the last session of the program.
- ⇒ Refund processing takes up to two weeks. We do not provide cash refunds.

Follow us on Social Media!



"BrunswickParksandRecreation"

BRUNSWICK RECREATION CENTER

PUBLIC ACCESS INCLUDES...



Locker Rooms,
Restrooms and
Showers



Free Wifi



Charging
Station



Warming/Cooling
Center

The Brunswick Recreation Center Welcomes the General Public If You:

Lose power

Need a place to charge your devices

Warm up in winter months

Cool down in summer heat

Take a shower

These services are offered for free to anyone during regular open hours. The Facility may open for extended hours as an Emergency Shelter when a large storm, extreme temperatures or an emergency occurs.

Brunswick
maine

220 Neptune Drive, Brunswick, ME

(207) 725-6656

www.brunswickme.org/parks-recreation

recprograms@brunswickme.org

Welcome to CIVICREC: Brunswick Parks and Recreation's NEW Online Registration Platform!



Our conversion to CIVICREC from RecTrac (Vermont Systems) is COMPLETE!

We Thank You for your patience with us this Winter as we transition between the two software systems. Staff has worked hard to ensure a smooth transition for customers. If you need any assistance, please reach out to us at 207-725-6656 or recprograms@brunswickme.org

What will I be able to do with CIVICREC?

- View Programs and Register Online using a User Friendly format and check out process
- Manage your account online (Pay Balances, View Household Calendars of Activities, Update Household Information)
- View League Games and Schedules
- View various Facility Schedules and Submit Rental Requests Online
- Pay and setup Auto Renew for Fitness Memberships
- Find information about various programs, department contacts, facilities and more!



To access, visit: <https://secure.rec1.com/ME/brunswick-me/catalog>
or www.brunswickme.org/parks-recreation

TO SETUP A CIVICREC ACCOUNT:

1. CLICK "**LOGIN/CREATE ACCOUNT**" in the upper left corner
2. CLICK the LAST option "**CREATE YOUR BME ACCOUNT**" (Light Blue Button) to create account.
 - a. On mobile devices, CLICK "**ACCOUNT**" in the upper right corner and CLICK "**SIGN UP**".
3. Fill out the required information.
4. **To receive Text Alerts** (i.e. class cancellations, facility closing), indicate your mobile carrier next to your cell number.
5. To receive Important Notifications, **opt-in to receive ALL communication** types (courtesy notifications, critical announcements, upcoming events, releasing of new programs).
6. Additional household members (spouse, children, etc.) may be added at any time in your Account Settings. Keep your entire household on one account!
7. When you have chosen an **Activity**, make sure to select the correct account member **before** adding it to your cart.

Browse our catalog for our facility rentals/reservations for your upcoming events and make a reservation online! For assistance or to update your profile, call 207-725-6656 or recprograms@brunswickme.org

Administrative Office Hours

Brunswick Parks and Recreation Administrative Offices are open

Monday - Friday from 8:00am - 4:30pm

The Welcome Center is open by appointment ONLY Monday—Friday from 9:00am-5:00pm

Administrative Offices will be CLOSED on the following Holidays:

New Year's Day—Monday, January 1st, 2024

Martin Luther King, Jr. Day—Monday, January 15th, 2024

Washington's Birthday/President's Day—Monday, February 19th, 2024

Patriot's Day—Monday, April 15th, 2024

Memorial Day - Monday, May 27th, 2024

Juneteenth - Wednesday, June 19, 2024

Independence Day—Thursday, July 4th, 2024

Labor Day—Monday, September 2nd, 2024

Indigenous Peoples' Day—Monday, October 14th, 2024

Veterans Day—Monday, November 11th, 2024

Thanksgiving Day—Thursday, November 28th, 2024

Christmas Day— Wednesday, December 25th, 2024



Recreation Center Hours of Operation



The Fitness Center, Track and Courts will be open anytime the Recreation Center is open, please check the weekly schedule for any changes or updates due to programming and events.

The Brunswick Recreation Center is open:

Sunday—10am-6pm (starting June 9 Summer Hours will be 8:00am-12:00pm)

Monday—6am-8pm

Tuesday—6am-8pm

Wednesday—6am-8pm

Thursday—6am-8pm

Friday—6am-8pm

Saturday—7am-6pm (starting June 8 Summer Hours will be 7:00am-3:00pm)

The Recreation Center will observe the following Holidays and will be closed on:

Easter Sunday—Sunday, March 31, 2024

Memorial Day—Monday, May 27th, 2024

Independence Day—Thursday, July 4th, 2024

Labor Day—Monday, September 2nd, 2024

Thanksgiving Day—Thursday, November 28th, 2024

Christmas Day— Wednesday, December 25th, 2024

Brunswick Recreation Center

Membership

All users of the Recreation Center are required to provide personal identification information upon entering the building, as well as complete a building use waiver. Upon completing membership documentation, users will be given a membership tag that will be scanned at the main entrance of the building each visit.

Access to the Fitness Center is based on enrollment into a Pro Level Membership or by purchasing a Day Pass.

Pro members, as well as Day Pass users will need to scan a membership tag in order to gain access to the Fitness and Cardio spaces. These spaces feature strength & conditioning equipment, a stretching & yoga area, free weight equipment and many cardio machines.

MEMBERSHIP	DETAILS	RESIDENT	NON-RESIDENT
BASIC	Includes access to track and court during open hours (does not include paid programs)	Free	Free
PRO	Includes access to strength and cardio spaces, access to IFit subscription	\$20/Month \$220/Year (1 month Free with Year Pass, \$20 savings)	\$30/Month \$330/Year (1 month Free with Year Pass, \$30 savings)
DAY PASS	PRO level membership for a day	\$5/Day	\$10/Day

\$5 OFF Discount for Active Military, Adults age 65+ and Students
Discounts apply to month/year rates, cannot be combined & must show ID

Discount Pro Resident: \$15 month/\$165 year (1 month free)
Discount Pro Non-Resident: \$25 month/\$275 year (1 month free)

Brunswick Recreation Center

Membership

Basic Membership

Basic Membership to the Recreation Center is free for Residents and Non-Residents of Brunswick. Basic Members have access to the Locker room facilities, the walking track and courts during open hours. Day Passes are available for Basic Members looking to utilize the Fitness and Cardio Spaces on a day-by-day. Paid programming requires a separate fee. Continue reading through our brochure for more information about our paid programming!

Pro Membership

Includes full access to Strength and Cardio spaces and equipment in addition to the amenities included in the Basic Membership.

Resident Fee: \$20 Per Month / \$220 Per Year

Non-Resident Fee: \$30 Per Month / \$330 Per Year

SilverSneakers Pro Membership

SilverSneakers comes automatically with qualifying health insurance plans. Eligible beneficiaries just need to get a SilverSneakers membership card to show at participating fitness locations. Contact your health insurance plan to find out if SilverSneakers is covered, or visit the SilverSneakers website to check your eligibility online. If you're eligible, then you can fill out the SilverSneakers form online to get and print your membership ID card to bring to the Brunswick Rec Center! SilverSneakers members have access to all amenities provided to Pro Members!



Day Pass

A day pass provides users with a Pro level membership for the business day.

Resident Fee: \$5 Per Day

Non-Resident Fee: \$10 Per Day

Discounts

The following discounts are available for the Monthly and Year rates:

\$5.00 Off Discounts for Active Military, Adults age 65+ and Students (Must show ID)

Resident Rates with Discount: \$15 month/\$165 year (Pay for 11 months and get the 12th free)

Non-Resident Rates with Discount: \$25 month/\$275 (Pay for 11 months and get the 12th free)

Discounts cannot be combined and are not available for day pass rates.

For more info about Open Gym or the Walking Track Please email recprograms@brunswickme.org

call 725-6656, or visit our website: brunswickme.org/parks-recreation

Brunswick Recreation Center

The Recreation Center features a new, State-of-the-Art Fitness Center, Basketball Courts, Pickleball Courts and an Indoor Track. This building is also home to Parks and Recreation Department Administrative Offices and the Welcome Center.

Amenities

- ♦ Two Basketball Courts that are regularly converted to Indoor Pickleball Courts. Multiple time slots throughout the week are available for individuals or families use the courts. This service is free and we offer some basic equipment to use.
 - Open Use = Any age use
 - Family Open Use = Use by families (Adults & Children)
 - K-12 Open Use = Use for grades K-12
 - (under 13 requires adult supervision)
 - High School Use = Use for grades 9-12
 - Adult Open Use = Adults 18+
- ♦ Lobby with ample seating and storage for outerwear and outdoor shoes
- ♦ Indoor Track: 2 lane, one-way direction, track with Distance of 1/9 of a mile
- ♦ Cardio Fitness Area and Strength and Conditioning Area (Included with Paid Membership Only)
- ♦ Full Locker rooms complete with bathroom facilities and showers
- ♦ Beverage and Snack Vending Machines
- ♦ Informational pamphlets & maps of Brunswick's outdoor spaces
- ♦ Abundant parking for those looking to access Rec Center or area trails
- ♦ Free, Public Wi-Fi access

Reminders

- ♦ No rollerblades, roller-skates, strollers, skateboards, allowed on track
- ♦ Wheeled walking aids, canes and wheelchairs permitted
- ♦ No amplified music played through speakers allowed
- ♦ Use cubbies and hooks in lobby to store personal items or store in locker room
- ♦ Locks are available for your purchase at Main Office
- ♦ The Recreation Department is not responsible for items lost or stolen—Please lock up your valuables!



Fitness Center Rules

1. Participants must be over the age of 14. Participants under the age of 16 must be accompanied by an adult.
2. Participants must report all injuries to BRC staff. In emergency, dial 911 before reporting to staff.
3. Show respect for the equipment, facility, and towards others.
4. Do not move or rearrange the equipment and/or exercise machines, unless otherwise permitted.
5. No horseplay or loud offensive language will be tolerated. Please
6. Report any damaged or broken equipment to BRC staff immediately.
7. Use a spotter when lifting heavy weights and please do not drop or throw the weights.
8. Keep hands and loose clothes away from weight stacks, cables, and pulleys.
9. Limit use of cardio machines to 30 minutes when others are waiting.
10. Proper attire is required at all times.
11. Do not take pictures or videos of others without consent. Please use headphones when listening to music.
12. Please clean up after yourself and wipe off equipment with provided materials after use.
13. Track use is limited to walking and running only. No vehicles
14. with wheels. Please use non-marking shoes on courts and track.
15. Consult your physician prior to engaging in physical activity.

Strength Room

The Strength Room features the strength & conditioning equipment listed below:

Matrix Ultra Dependent Arm Curl

Matrix Ultra Back Extension

Matrix Ultra Converging Chest Press

Matrix Ultra Diverging Lat Pulldown

Matrix Ultra Leg Extension

Matrix Ultra Leg Press

Matrix Ultra Rear Delt / Pec Fly

Matrix Ultra Diverging Seated Row

Matrix Ultra Converging Shoulder Press

Matrix Ultra Triceps Press

Matrix Ultra Hip Adductor

Matrix MG Lat Pulldown

Matrix MG Seated Row

Matrix MG Vertical Bench Press

Matrix Aura Lat Pulldown

Matrix MG-PL62 Smith Machine

Magnum VKR w/Chin

Matrix Aura 5-Stack Multi-Station

Matrix Aura 4-stack Multi-Station

Matrix Aura - Adjustable Cable Crossover

Matrix Aura Seated Row

Matrix Aura - Triceps Pressdown

Magnum Full Power Rack

Connexus Stability Step

Kettlebells, Slamballs, Strength Bands, Resistant Tubes, Free Weights, Tri Plyo Box, and Sled with moveable parts



Cardio Area

Our Cardio Area includes a stretching and yoga area and the cardio machines listed below:

Stretching and Yoga Area

4 Rowing Machines

2 Performance Climbmills with Touch Console

5 Performance Treadmills with Touch Console

4 Performance Ascent Trainers with Touch Console

2 Performance Recumbent Cycle with LED Console

2 Performance Upright Cycle with LED Console 2 Schwinn Air Bikes with LED Console

1 Ski Erg

1 Hand Bike



For more info about our Fitness Equipment and Offerings,
Please email Fitness and Facility Coordinator, Laurie Grinnan at lgrinnan@brunswickme.org

Health & Fitness Classes

Machines 101

Join us as we tour the spaces in our beautifully updated and state of the art Fitness Center. We will take a tour of both our Cardio area and our Weight room. Get basic instructions on how to use your preferred machine or piece of fitness equipment. Get your questions answered! Discuss the benefits of certain exercises and fitness program plans. We may also go over membership pricing and details, equipment questions, and future programming. No cost. Please register in advance.

May Dates: Wednesdays, May 8,15,22

June Date: Check website or call us

July Dates: Check website or call us

Time: 5:00pm-6:00pm

Location: Meet in the Lobby

Fee: Free

Coordinator: Laurie Grinnan, lgrinnan@brunswickme.org



**ONLINE PROGRAM REGISTRATION IS AVAILABLE AT
BRUNSWICKME.ORG/PARKS-RECREATION**

Or stop by our office located at
220 Neptune Drive, Brunswick Maine
Office Hours: Monday - Friday from 8:00am to 4:30pm

Health & Fitness Classes

Personal Training Assessment

This 30 minute session is designed to be a one-time session to meet with one of our awesome personal trainers. During this session you will have a personal fitness assessment which will inform your personalized fitness plan. This is designed to be a quick assessment for the purpose of identifying areas muscular imbalances, fitness goals, and health goals. For close personal instruction during your workouts, sign up for our hour long personal training sessions. This program does not have a set date and time as it will be based off coach and participant availability.

Once you register, you will be contacted shortly after by your coach to schedule your session. All sessions must be used within 30 days.

Personal Training Assessment

Dates: Based off of client and trainer's availability

Time: 30 minutes

Fee: \$30

Location: Weight Room

Coordinator: Laurie Grinnan, lgrinnan@brunswickme.org

**ONLINE PROGRAM REGISTRATION IS AVAILABLE AT
BRUNSWICKME.ORG/PARKS-RECREATION**

Or stop by our office located at
220 Neptune Drive, Brunswick Maine
Office Hours: Monday - Friday from 8:00am to 4:30pm

Health & Fitness Classes

One-on-One Personal Training

This program is designed for a one-time session to meet with one of our AMAZING Personal Trainers. During this session, get careful instruction, discuss fitness recommendations, and feel encouraged on your journey. This program does not have a set date and time as it will be based off coach and participant availability. Sign up for either a 1-hour session, 2 hours (split between two dates) or 3 hours (split between three dates). If you would like to sign up for more than 1 hour in a month, please register for the given section option (it will automatically add in your reduced rate).

Once you register, you will be contacted shortly after by your coach to schedule your session. All sessions must be used within 30 days.

All individuals registering for personal training must have a PRO membership.

1-1 Personal Training 1 Hour

Dates: Based off of client and trainer's availability

Time: 1-hour

Fee: \$55

1-1 Personal Training 2 Hours (\$10 saving)

Dates: Based off of client and trainer's availability

Time: 2-hours

Fee: \$100

Personal Training 3 Hours (\$20 saving)

Dates: Based off of client and trainer's availability

Time: 3-hours

Fee: \$145

Location: Weight Room

Coordinator: Laurie Grinnan, lgrinnan@brunswickme.org



Health & Fitness Classes

Small Group Personal Training

Group personal training is perfect for those who are looking for peer accountability and consistent training with a buddy or two. Grab your fitness friends and sign up for group style personal training sessions. These training sessions do not have a set date and time allowing you to find a time that works for your group. Sign up for either a 1-hour session, 2-hours (split between two dates) or 3-hours (split between three dates). Please notice the correcting sections for your desired number of hours.

Once you register, you will be contacted shortly by your coach to schedule your session. All sessions must be used within 30 days.

Group Training 1 Hour

Dates: Based off of client and trainer's availability

Time: 1-hour session

Fee: \$35 per person

Group Training 2 Hours

Dates: Based off of client and trainer's availability

Time: 2-hour session

Fee: \$55 per person

Group Training 3 Hours

Dates: Based off of client and trainer's availability

Time: 3-hour session

Fee: \$75 per person

Location: Weight Room

Coordinator: Laurie Grinnan, lgrinnan@brunswickme.org

Minimum of 3 people/ Max 5.

Adult Sports & Leagues

Adult Pick Up Basketball

Is your life too busy to join a sports league, but you still enjoy getting out to play sports? Would you like to get some exercise and enjoy a little competition, but not have to commit to a long season? Consider attending our Pick-Up Adult Basketball offerings indoors at the Recreation Center!

Adult Pick-up Basketball is open to men and women 18 years or older and is informal, not team based. Teams are made on the fly and games are any version the group decides on (3v3, half court, full court, pressing, slow down, 5v5 etc.), no officials so call your own fouls.

Day(s) and Times:

Monday - Friday From 11:30am-2pm

Tuesday, Thursday From 6:00pm-8:00pm

Saturday 12:00pm-2:00pm

Sunday 4:00pm-6:00pm (When Over 35 Basketball League is completed)

Location: Brunswick Rec Center, Court 1 or Court 2

Please note the schedule is subject to change, for up-to-date weekly gym schedule please call or visit www.brunswickme.org/parks-recreation. Additional court times available, see detailed weekly building schedule.



Additional Sports

Have another sport that you would like to see Offered and is not listed above? Please contact us at 207-725-6656.

**ONLINE PROGRAM REGISTRATION IS AVAILABLE AT
BRUNSWICKME.ORG/PARKS-RECREATION**

Or stop by our office located at
220 Neptune Drive, Brunswick Maine
Office Hours: Monday - Friday from 8:00am to 4:30pm

Adult Sports & Leagues

Adult Golf Instruction

Participants will learn swing basics including grip, stance and alignment, followed by an introduction to irons, woods, chipping, and putting. Participants will also learn golf rules and etiquette. Once the class is complete, you will be ready to schedule your first tee time! Your own golf clubs are recommended, but some clubs are available to use for the program if needed. (Please provide advanced notice)

About the Golf Course: The Brunswick Golf Course is a premier golf course offers an outstanding teaching facility that includes a driving range, chipping area, pitching area, putting green, and sand play.

About the Instructor

Coach Gerry has been a golf instructor in the local area and has been involved with the Brunswick Parks & Recreation Department for many years. He has experience and an extensive teaching background with youth, teens, and adults. His positive style offers a fun experience in learning the game of golf.

Ages: Ages 18+

Dates: May 9th – 30th

Time: Thursdays, from 5:30pm-6:30pm*

*Final Session on May 30th meets until 7:30pm

Location: Brunswick Golf Course

Fee: \$102 Residents / \$135 Non-Residents

Instructor: Gerry Caron, Former Bowdoin College

Former Mt Ararat Varsity Golf Coach

Coordinator: Aaron Cropley,

acropley@brunswickme.org



&

Adult Sports & Leagues

Adult Dodgeball League

We are excited to continue the Adult Intramural Sports League at the Brunswick Landing for a 3rd season! This Recreational league is non-competitive and are designed for the average adult to come have fun while exercising! Gather some of your friends or make some new friends & re-live the fun you used to have as a kid!

Adult Dodgeball League, a very popular sports offering featured as part of the Landing's Adult Intramural Sports League returns for late fall/early winter! The Brunswick Parks and Recreation Department is proud to be collaborating with Wild Oats Bakery and Flight Deck Brewery to provide this exciting and fun opportunity for adults!

Dodgeball meets on Tuesdays at the Brunswick Recreation Center and game times begin at either 6pm or 7pm. The league fee is \$250 per team. If you are having a company sponsor your team, reach out to us in order to get your team registered and an invoice can be sent to the team sponsor. Individuals not affiliated with a team and teams interested in playing are encouraged to contact the Brunswick Parks & Rec at 725-6656.

League Details

There can be a maximum of 12 teams and a Minimum 6 teams competing in the league.

Game start times are 6pm and 7pm and there is a 50 min time limit per game.

There must be a minimum of 8 adults per roster (teams must be gender diverse)

Teams will compete 5v5

Game nights will consist of a best of 3 game series and there will be Double Headers for a total of 6-9 games to be played each night

Games are played until all players for the opposing team are eliminated or time limit of 4 minutes has been reached

Standings will be kept and each session will conclude with a 1-day playoff to determine a champion.

League Rules

Players must be 18 years of age and graduated from High School

The Facility and parking lot are Alcohol, tobacco, drug free zones

This is a recreational league for the average adult, violence or aggressive competition behavior will not be tolerated

Teams are encouraged to attend the post play social over at Flight Deck Brewery where League Members will receive special discounts!

Ages: Adults 18 and older

Dates: Tuesdays, May 14th-June 11th

Time: 6pm - 8pm

Location: Brunswick Recreation Center

Fee: \$250

Coordinator: David Coffill, dcoffill@brunswickme.org



WINTER 2023 DODGEBALL CHAMPIONS—
THE MOUTHY BALLERS

Adult Sports & Leagues

Pick-up Pickleball

Pickleball is the fastest growing sport in the United States, as all ages have started to pick up a paddle and learn more about this fun and active sport. Pickleball is a fun and exciting (and addictive) racquet sport, which differs from tennis by utilizing a court less than half the size of a tennis court. It is primarily played as a doubles sport which means each person only has to cover about ten feet of court side-to-side. The rules are few and simple and the game utilizes an underhand serve, perforated plastic ball and "no-smash zone," seven feet in front of the net which allows for an easy-to-learn sport with a slower finesse-style of play.

A Pickleball court has the same dimensions as a badminton court (44 by 20 feet) with a net that is two inches lower than a tennis net. The sport is played with wooden or composite paddles that are about twice the size of a ping pong paddle and a perforated plastic ball similar to a whiffle ball.

This indoor program offers 2 courts for a drop-in style play and allows adults to play many times throughout the week. This indoor program allows adults to come down and play a game that is best described as human ping pong! This program is welcoming new players all the time, be sure to come down and check it out!

Equipment

We have a selection of paddles and pickleballs for players to use during the session.

Day(s) and Times: (Subject to Change)

Monday-Friday from 6:00am – 12:00pm

Monday/Wednesday/Friday from 5:30pm-8:00pm

Sunday from 10:00am-2:00pm

Location: Brunswick Recreation Center Gymnasium

Fee: \$2 Brunswick resident, \$3 Non-Brunswick resident
(10-Punch Passes Available)

Please note the schedule is subject to change,
for up-to-date weekly gym schedule please call
or visit www.brunswickme.org/parks-recreation



**ONLINE PROGRAM REGISTRATION IS AVAILABLE AT
BRUNSWICKME.ORG/PARKS-RECREATION**

Or stop by our office located at
220 Neptune Drive, Brunswick Maine
Office Hours: Monday - Friday from 8:00am to 4:30pm

ADULT WIFFLEBALL LEAGUE



THURSDAY
July 11th –August 22th
HBS FIELDS

The Brunswick Parks and Recreation Department is excited to announce the next new sports offering featured as part of the Adult Intramural Sports League. These Recreational leagues are lightly competitive and are designed for the average adult to come have fun while exercising! Gather some of your friends or make some new friends and relive those fun wiffleball games you played when you were a kid!

Featured for Summer 2024 is the Adult Co-Ed Wiffleball League. Wiffleball meets on Thursday at HBS Field, with game times starting at either 5:45pm or 7pm. The league fee is \$150 per team which includes regular season games, standings, playoffs, equipment, and site supervisor. If you are having a company sponsor your team, reach out to us to get your team registered and an invoice can be sent to the team sponsor. Individuals not affiliated with a team and teams interested in playing are encouraged to contact the Brunswick Parks & Rec at 725-6656.

Team Roster forms (see reverse side) and team fees must be submitted at the time of registration.

League Details

There will be 4-8 teams in the league—team entries will be accepted until the league is filled

There must be a minimum of 4 adults per roster and teams must be gender diverse with at least 4 men and 4 women on each team.

Teams will compete 4 on 4. (One Female must be on the Field)

Each team will play a seven-game schedule.

Standings will be kept, and each session will conclude with a 1-day playoff to determine a champion.

League Rules

Players must be 18 years of age and graduated from High School

The Facility and parking lot are Alcohol, tobacco, Vaping and drug free zones

This is a recreational league for the average adult, violence or aggressive competition behavior will not be tolerated

Return with full registration fee & roster form (on back)
to the Brunswick Recreation Center, 220 Neptune Drive, by July 1, 2024.

Adult Sports & Leagues

Women's Slow Pitch Softball League

The League plays on Tuesdays and Thursdays at either Edwards Field off Jordan Avenue or SMCC field located off Admiral Fitch Avenue at the Brunswick Landing. The season features a 10 game schedule beginning in early June and ending near the beginning to middle of August. The league uses USA Softball umpires.

The League is open to teams but if individuals are interested in playing and are not affiliated with a team they should contact the Parks and Recreation Department at 207-725-6656.

Ages: Adults and 16-17year olds with Guardian Permission

Dates: Tentative Start Date 6/18/2024

Time: Weekday games at 6pm & 7pm

Location: Edwards Field and SMCC Field

Fee: \$900 per team

Coordinator: David Coffill,
dcoffill@brunswickme.org



**WOMEN'S
SLOW PITCH
SOFTBALL
League**
June-August 2024
Tuesday and Thursday Evenings
Games Start At 6PM
For Ages 16 and Up*



Not connected to a team, but want to play? Register as a "free agent" and we'll connect you with a team!

***Players under 18 must have signed permission from a guardian in order to join the league**

ONLINE PROGRAM REGISTRATION IS AVAILABLE AT [BRUNSWICKME.ORG](https://www.brunswickme.org)

Or stop by our office located at
220 Neptune Drive, Brunswick Maine

Adult Sports & Leagues

Introductory Pickleball Lessons

Have you heard about this sport with the funny name of Pickleball and wonder what it is all about? Join our instructor Theresa for an Introductory Lesson that will show you the basics of Pickleball and explain how to play. No previous experience necessary. Open to adults only.

Age: Adults over 18

Day(s) and Times:

Every other Tuesday From 4:30pm-6:00pm

Tuesdays— 4/4, 4/18, 5/2, 5/16, 5/30, 6/27

*No Lesson 6/13

Every other Thursday From 1-2:30pm

Thursdays— 4/13, 4/27, 5/11, 5/25, 6/8, 6/22

Time: Tuesday, 4:30pm – 6:30pm

Thursday, 1:00pm-2:30pm

Location: Recreation Center Gym

Fee: \$10 Brunswick Residents

\$13 Non-Residents

Instructor: Theresa Houtman

Coordinator: Aaron Cropley, acropley@brunswickme.org

Equipment

We have a selection of paddles and pickleballs for players to use during the session.

Limited to 8 players. A minimum of 4 participants is necessary in order to hold the class.



Adult Sports & Leagues

Monthly Pickleball Tournament

Held the Last Friday of Every Month

Beginning at 5:30pm

Located at the Brunswick Recreation Center

Fee: \$15 per person

The Brunswick Parks and Recreation Department hosts a monthly Pickleball Tournament ! These tournaments are offered as fun, yet competitive events where every team competes against every other team, and the winner is determined by who wins the most matches. All proceeds will go towards Brunswick Parks and Recreation Department Pickleball Programming!

Tournament Details

There can be up to 16 teams or 32 players in the tournament—team entries will be accepted in-person, by phone, or online until the tournament is filled. *Pre-registration is required*

Teams are guaranteed 5 matches

There will be 4 divisions and the top team in each division moves on to the playoff

One Game Match will be played, and each game will be played to 15 with wins by 2 points

All other rules will be governed by USA Pickleball

Tournament Prizes

Each entry receives a free tournament giftbag

Prizes awarded to top 4 teams

1st place team wins a 6-punch Pickleball Punchcard (one per team member)

2nd place team wins a 4-punch Pickleball Punchcard (one per team member)

3rd and 4th place team wins a 2-punch Pickleball Punchcard (one per team member)

Coordinator: David Coffill, dcoffill@brunswickme.org

Youth Sports Programming

Youth Hip Hop Dance

Kids will get up and MOVE to their favorite tunes in this program where they'll learn trending hip-hop choreography and technique, while developing their understanding of rhythm, body awareness, and self-expression! This fun and energizing dance club offers the values, practices, and experiences that can deeply enrich an individual's life in a positive way! It also offers students the opportunity to invent as much as they inherit and will give students the opportunity to develop their own talents in relation to the talents of others. Each session will include an opportunity for dancers to display their learned skills & talents for family & friends on the final day of the program!

Please note—Where this program meets directly after school in the HBS Gymnasium, the Rec Department will provide supervision in the gym for children coming directly from HBS so that children can unwind until the program begins. If you don't wish to utilize this service & will drop your child off, please indicate that during registration!

Grades: 2-5 as of Fall 2023

Dates: Mondays, April 22-June 3 (*No class 5/27*)

Time: 4:00pm-5:00pm

Location: Harriet Beecher Stowe School Gym

Fee: \$90 Residents / \$120 Non-Residents

Instructor: Kate Andreu

Coordinator: Aaron Cropley, acropley@brunswickme.org

Tiny, Tappy Toes-Tap & Ballet for 4-6 Year Olds

Learn the basic techniques of tap, ballet and creative movement steps in this fun combo class, with instructor Kate Andreu. Dance teaches self confidence, balance, and coordination. Additionally, it keeps a child's mind and body working together. Ballet and tap shoes are recommended but not required. A pair of flexible shoes and a pair of dress shoes (hard sole) are also appropriate. Please send your dancer in comfortable, flexible clothes (no jeans) and sneakers. Each session will include an opportunity for dancers to display their learned skills & talents for family & friends on the final day of the program!

Age: 4-6 as of January 22nd

Dates: Mondays, April 22-June 3 (*No class 5/27*)

Time: 5:15pm-6:00pm

Location: Harriet Beecher Stowe School Cafeteria

Fee: \$90 Residents / \$120 Non-Residents

Instructor: Kate Andreu

Coordinator: Aaron Cropley, acropley@brunswickme.org



About the Instructor

Classes will be taught by Instructor Kate Andreu. Ms. Kate has been in the performing arts industry for over 20 years, working on numerous production projects and enrichment programs throughout the state. She is a USM alumnus with a BS in social work and minor in dance. She is a 5 year choreographer for Dance USM and guest instructor for the USM Dance Program. Additionally, she is director and owner of Urban Dynamix Dance Co. Kate also works as a professional choreographer for several theater companies throughout the state. Kate is a well-known performing arts professional, with the energy level to match. She looks forward to engaging with her students and helping them find a love of dance and performance!

ONLINE PROGRAM REGISTRATION IS AVAILABLE AT
<https://secure.rec1.com/catalog>

Or stop by our office located at
220 Neptune Drive, Brunswick Maine

Office Hours: Monday - Friday from 8:00am to 4:30pm

Youth Sports Programming

Youth Wrestling Clinic

Ever wanted to try out wrestling? Looking to hone your wrestling skills? Come join us for six evening clinics in April. Any ability is welcome. Bring your wrestling gear if you have some. Emphasis will be placed on safety, rules, learning, strategy, and fun! All abilities and experience levels are welcomed. Each wrestler will be matched with a child of similar weight.

Kids will be split into two age groups: Ages 4-7 & Ages 8-11

Ages: Ages 4-11 as of April 2, 2024

Dates: Tuesdays & Thursdays April 2- April 25

(No sessions held on April 16th and 18th)

Time: 5:30pm –6:30pm

Location: Brunswick Recreation Center

Fee: \$51 Residents/ \$68 Non-Residents

Instructor: Jeff Dolley, Richard Chipman

Coordinator: Aaron Copley, acropley@brunswickme.org



Midcoast Youth Volleyball Club

We are excited to welcome Bowdoin College Coach Erin Cady to our youth volleyball program for kids in grades 3-5! This clinic will focus on introducing players to the sport of volleyball with an emphasis on fun and learning. Engaging, game-like station work will provide opportunities for players to practice their skills (passing, setting, attacking, and serving). All participants will be taught proper techniques and basic rules of the game. We emphasize ATHLETIC MOVEMENT and will teach that through the sport of volleyball.

Coach Cady will be assisted by members of her Bowdoin College volleyball team!

Please note—Where this program meets directly after school in the HBS Gym, the Rec Department will provide supervision in the gym for children coming directly from HBS so that children can unwind until the program begins.

Grades: 3 to 5

Dates: Mondays, March 25, April 1, April 8

Time: 4:00pm to 5:15pm

Location: HBS Gymnasium

Fee: \$60 Residents / \$80 Non-Residents

Instructor: Erin Cady, Bowdoin College Women's Volleyball Head Coach

Taylor Stevens, Bowdoin College Women's Assistant Coach

Bowdoin College Women's Volleyball Team

Coordinator: Aaron Copley, acropley@brunswickme.org



Youth Sports Programming

Youth Golf Instruction

Learn to play Golf the fun way with former Mt. Ararat Varsity Golf Coach and two-time Maine Coach of the year, Gerry Caron! Youth golf programs are limited to 12 participants.

Indoor Early Bird Golf

Participants will receive instruction on Grip Stance and Full Swing Techniques as well as chipping, putting and pitching instruction throughout the duration of this 4-week program. This program includes contests with the opportunity for prizes! Your own golf clubs are recommended, but some clubs are available to use for the program if needed. (Please provide advanced notice)

Ages: Ages 8-16

Dates: March 5th– March 26th

Time: Tuesdays, from 5-5:45pm

Location: Harriet Beecher Stowe School

Fee: \$65 Residents / \$86 Non-Residents

Instructor: Gerry Caron, Former Bowdoin College & Former Mt Ararat Varsity Golf Coach

Coordinator: Aaron Cropley, acropley@brunswickme.org



About the Instructor

Coach Gerry has been a golf instructor in the local area and has been involved with the Brunswick Parks & Recreation Department for many years. He has experience and an extensive teaching background with youth, teens, and adults. His positive style offers a fun experience in learning the game of golf.

**ONLINE PROGRAM REGISTRATION IS AVAILABLE AT
[BRUNSWICKME.ORG/PARKS-RECREATION](https://brunswickme.org/parks-recreation)**

Or stop by our office located at
220 Neptune Drive, Brunswick Maine
Office Hours: Monday - Friday from 8:00am to 4:30pm

Youth Sports Programming

April Vacation Golf for Kids

This one-day program for youth is a great opportunity for children to learn the game of Golf or to practice their existing skills! Children will receive chipping, putting and pitching instruction and this program includes contests with the opportunity for prizes! Your own golf clubs are recommended, but some clubs are available to use for the program if needed. (Please provide advanced notice)

About the Golf Course: The Brunswick Golf Course is a premier course that offers an outstanding teaching facility including a driving range, chipping area, pitching area, putting green, and sand play.

Ages: Ages 8-16

Dates: Thursday, April 18th

Time: 1pm-2:30pm

Location: Brunswick Golf Club

Fee: \$31 Brunswick Residents / \$41 Non-Residents

Instructor: Gerry Caron, Former Bowdoin College & Former Mt Ararat Varsity Golf Coach

Coordinator: Aaron Cropley, acropley@brunswickme.org



About the Instructor

Coach Gerry has been a golf instructor in the local area and has been involved with the Brunswick Parks & Recreation Department for many years. He has experience and an extensive teaching background with youth, teens, and adults. His positive style offers a fun experience in learning the game of golf.

**ONLINE PROGRAM REGISTRATION IS AVAILABLE AT
[BRUNSWICKME.ORG/PARKS-RECREATION](https://www.brunswickme.org/parks-recreation)**

Or stop by our office located at
220 Neptune Drive, Brunswick Maine
Office Hours: Monday - Friday from 8:00am to 4:30pm

Youth Sports Programming

Start Smart Baseball/ Softball

Start Smart Baseball teaches children (ages 3-5) the basic motor skills necessary to play organized baseball, softball, or tee ball, while they work one-on-one and spend quality time with their trusted adults. The program focuses on teaching children and adults throwing, catching, batting, and running/agility skills without the threat of competition or the fear of getting hurt. Start Smart Baseball sessions are held twice weekly for 3 weeks, and each week the exercises become more difficult as the class progresses and the children show improvement. Participants may wear regular sneakers for this program. The registration fee includes instruction and a participant manual for adult coaches.

Highlights of the program:

- Adults and children work together with the assistance of an instructor to learn the basics.
- Children have fun while developing skills and making improvements.
- Each skill is broken down into simple steps so participants have a framework to teach & learn.
- 1-to-1 attention means each class is tailored specifically to your child's needs and progress.

Ages: Ages 3-5 as of the start of the program

Dates: Tuesdays & Thursdays, May 7th-May 23rd

Time: 5:00pm-5:45pm

Location: Brunswick Recreation Center

Fee: \$70 Residents / \$93 Non-Residents

Instructor: Brunswick Parks & Recreation Department Staff

Coordinator: Aaron Cropley, acropley@brunswickme.org



Kids on the Diamond Instructional Baseball/ Softball

The first few nights the whole group will be introduced to and will practice fundamental skills of the game. The group will then be split into teams of 8 players, where kids will work on throwing, catching, running the bases, defense and batting. Each night will repeat the same format, with time spent learning various positions and terms of the sport, and kids will play a full game during the final session(s) of the program.

The games will be very controlled, providing a safe and positive learning experience to all players. Players should bring their own glove, bat & helmet, but please let us know if need to borrow equipment! This program also includes a team t-shirt! This program has a maximum enrollment of 32 participants per session.

Ages: Grades K-2 as of Fall 2023

Dates: Tuesday, Wednesdays, Thursday May 28th-June 6th

Time: Grade K —4:30pm-5:15pm and Grade 1-2— 5:30-6:15pm

Location: HBS

Fee: \$70 Residents / \$93 Non-Residents

Instructor: Brunswick Parks & Rec. Department Staff

Coordinator: David Coffill, dcoffill@brunswickme.org



Youth Sports Programming

Cross Country Running Club

Children will learn the fun and satisfaction of running through weekly practices! Additionally, there will also be scheduled “Fun Runs” on Wednesday, as well as a championship meet at the end of the season. At the Fun Runs, children will run with youngsters their own age; 1st and 2nd graders will run a half-mile; 3rd and 4th graders will run three quarters of a mile; and 5th graders will run one mile. The Fun Run Schedule will be provided during the first week of the program. Transportation will not be provided and parents/guardians must arrange for transportation to and from the Fun Runs.

During “Fun Runs” children will run with youngsters in their own age divisions:

1st and 2nd graders will run a half-mile

3rd and 4th graders will run three quarters of a mile

5th graders will run one mile

*Please note—There is no “fun run” scheduled for Wednesday, April 24th and there will be no practice on Memorial Day, May 27th. Transportation is not provided to weekly fun runs or to the championship running event and runners are responsible for their own transportation.

Grades: Grades 1-5 as of Fall 2023

Dates: Mondays and Wednesdays, April 22nd– June 1st

Time: 5:30pm-6:30pm

Location: Brunswick Recreation Center and Various Locations in Southern Midcoast Maine

Fee: \$65 Brunswick Residents Only

Instructor: Becca Fisk

Coordinator: Aaron Cropley, acropley@brunswickme.org

Little Striders-Grade K Running Introduction

This program is specifically designed as a FUN, positive introduction to running. Becca will work with the kids to introduce them in a safe, fun environment so they can begin to experience the joy of running. Sessions will be limited to a half hour to help keep kids engaged and wanting to run. Emphasis will be placed on an appropriate low-volume, low-intensity training schedule. The goal is for kids to have a great time, not run a fast time.

Grades: Grades K as of Fall 2023

Dates: Mondays - April 29th – May 20th

Time: 6:30pm-7:00pm

Location: Harriet Beecher Stowe School Field

Fee: \$60 Brunswick Residents \$90 Non-Residents

Instructor: Becca Fisk

Coordinator: Aaron Cropley, acropley@brunswickme.org

Interested in helping out? Adult and student volunteers are also needed to assist paid staff. Interested individuals should reach out to the Recreation Department to learn more! We hope you will join us in making this a great program!



Youth Sports Programming

Kick Start Soccer

This non-competitive program will be run in a clinic format and the emphasis will be on learning in a fun environment! Children will be coached under the direction of Scott Wiercinski, Bowdoin College Men's Head Soccer Coach & Brianne Smithson, Bowdoin College Women's Head Soccer Coach. Coaches Wiercinski and Smithson, along with Bowdoin College soccer players, will instruct participants in fundamental soccer skills, rules and other aspects of the game! Station work will provide opportunities for young players to practice their skills like passing, shooting and dribbling. Bring your own soccer ball if you have one. There will be some available to use as well!

Ages: 7 & 8 as of Fall 2023

Dates: Saturdays, April 6th, 13th, 20th

Time: 9am-10:30am

Location: Pickard Field Turf Facility, Bowdoin College

Fee: \$35 Residents / \$47 Non-Residents

Instructor: Bowdoin College Varsity Soccer Coaches and Players

Coordinator: Aaron Cropley, acropley@brunswickme.org

or

Ages: 5 & 6 as of Fall 2023

Dates: Saturdays, April 6th, 13th, 20th

Time: 10:30-11:30am

Location: Pickard Field Turf Facility, Bowdoin College

Fee: \$27 Residents / \$36 Non-Residents

Instructor: Bowdoin College Varsity Soccer Coaches and Players

Coordinator: Aaron Cropley, acropley@brunswickme.org



Youth Enrichment Programming

April School Vacation Camp

Vacation Camp is an enrichment program that will consist of games, sports, arts & crafts, theme days and special events. We will provide a safe, fun, nurturing environment for your child to enjoy their School Vacations. Our caring and enthusiastic Summer Vacation Camp staff will be running the camp. They are experienced in working with kids of all ages and are certified in first aid & CPR. Children will primarily remain at the camp location as bus trips will be dependent upon availability of transportation. More information about themed days and special events will be sent to participants prior to the start of camp!

Campers will need to bring 2 snacks, lunch, and drinks with them each day. Children are encouraged to wear appropriate footwear and clothing for sports and craft activities. Children should also dress appropriately for the weather, as we will go outdoors if weather and conditions permit!

Grades: Grades K-6

Dates: Tuesday– Friday, February 20-23

Tuesday– Friday, April 16-19

Time: 8am-5pm

Location: TBA

Fee: \$175 Brunswick Residents

\$233 Non-Residents

Instructor: Brunswick Parks & Rec Staff

Coordinator: Aaron Cropley, acropley@brunswickme.org



Youth Enrichment Programming

March-LEGO-Woodland Creatures

Please join us for this 3 hour Lego extravaganza where we investigate Maine animals and their habitats! Participants will stay busy with individual builds which may include a friendly fox, a hairy hedgehog and a rambunctious rabbit! Lego challenges, games and free building time will round out our session!

Grades: Grades K-5 in Fall 2023

Dates: Friday, March 8th

Time: 5pm - 8pm

Location: Harriet Beecher Stowe School

Fee: \$38 Residents / \$45 Non-Residents



April-LEGO-Mythical Creatures

Please join us for this 3 hour Lego extravaganza where we discuss and build mythical creatures! Participants will stay busy with individual builds which may include a wild werewolf, a creepy space alien and a lucky leprechaun! Lego challenges, games and free building time will round out our session!

Grades: Grades K-5 in Fall 2023

Dates: Wednesday, April 17th

Time: 9am-12pm

Location: Harriet Beecher Stowe School

Fee: \$38 Residents / \$45 Non-Residents



May-LEGO 3 In 1!

Please join us for this 3 hour Lego extravaganza where we build, rebuild and build again! Participants will stay busy with individual builds which can be built and then rebuilt into 2 other creations! Lego challenges, games and free building time will round out our session!

Grades: Grades K-5 in Fall 2023

Dates: Friday, May 17th

Time: 5pm - 8pm

Location: Harriet Beecher Stowe School

Fee: \$38 Residents / \$45 Non-Residents

Participants should bring water bottles and snack (if they like) as some Lego lovers may need to fuel up during this time!

Instructor: Brick-by-Brick LEGO Staff

Coordinator: Aaron Copley, acopley@brunswickme.org



Youth Enrichment Programming

Mad Science: Ready, STEM, Go!

In this program, children learn foundational science and find out how STEM is at work in the world around them! They learn about the animal kingdom, both on land and under the sea. They make mixtures and explore the science of motion and energy. They also discover the technology that powers our modern world.

Grades: Grades K-5 in Fall 2023

Dates: Tuesdays, April 2—May 28.

No Class on 4/16

Time: 3:50pm-4:50pm

Location: Kate Furbish Elementary School

*KFS afterschool program permission slip required for participation

Fee: \$123 Residents / \$164 Non-Residents

Instructor: Mad Science of Maine Staff

Coordinator: Aaron Cropley, acropley@brunswickme.org

or

Grades: Grades K-5 in Fall 2023

Dates: Thursdays, April 4—May 30

No Class on 4/18

Time: 3:50pm-4:50pm

Location: Harriet Beecher Stowe School **Fee:** \$123 Residents / \$164 Non-Residents

Instructor: Mad Science of Maine

Coordinator: Aaron Cropley, acropley@brunswickme.org



Please note—Where these programs meet directly after school, the Rec Department will provide supervision for children coming directly from school until the program begins. If you don't wish to utilize this service & will drop your child off, please indicate that during registration!



**ONLINE PROGRAM REGISTRATION IS AVAILABLE AT
BRUNSWICKME.ORG/PARKS-RECREATION**

Or stop by our office located at
220 Neptune Drive, Brunswick Maine
Office Hours: Monday - Friday from 8:00am to 4:30pm

Summer Camp

Summer Day Camp

Our Summer Day camp is for children ENTERING Grades K-8th in the FALL 2024. Children will engage in a variety of activities including arts and crafts, sports, STEM projects, field games, special guests and team building activities. Grades 1-6 will have weekly field trips while 7-8th graders will spend most of their time off site with local, day trips as well as additional weekly trips. There will be NO CAMP on July 4th, July 5th & August 16th.

****Locations, times, dates subject to change****

Our Kinder Camp will be offered to children entering Kindergarten in Fall 2024 and ONLY available to Brunswick Residents due to limited spots. Camp will provide a lower staff to child ratio and is designed to offer activities on site, walking distance adventures and occasional off-site trips. Children must be potty trained. Online Registration is available in CIVICREC: <https://secure.rec1.com/ME/brunswick-me/catalog>

Kinder Camp – Entering Kindergarten as of Fall 2024 ***BRUNSWICK RESIDENTS ONLY**

Tentative Location: Kate Furbish Elementary School, **Max Capacity:** 24

Dates: Monday, July 1st– Thursday, August 9th (program runs Mon-Fri)

Time: 8:00am – 4:30pm with structured programming from 9am-3pm daily ***Must be potty trained**

Imagination Camp - Entering Grade 1-2 as of Fall 2024

Tentative Location: Kate Furbish Elementary School, **Max Capacity:** 80

Dates: Monday, June 24th – Thursday, August 15th (program runs Mon-Fri)

Time: 7:30am – 5:30pm with structured programming from 9am-4pm daily

Explorers Camp - Entering Grade 3-4 as of Fall 2024

Tentative Location: Harriet Beecher Stowe School, **Max Capacity:** 80

Dates: Monday, June 24th – Thursday, August 15th (program runs Mon-Fri)

Time: 7:30am – 5:30pm with structured programming from 9am-4pm daily

Adventure Camp - Entering Grade 5-6 as of Fall 2024

Tentative Location: Harriet Beecher Stowe School, **Max Capacity:** 80

Dates: Monday, June 24th – Thursday, August 15th (program runs Mon-Fri)

Time: 7:30am – 5:30pm with structured programming from 9am-4pm daily

Expedition Camp - Entering Grade 7-8 as of Fall 2024

Tentative Location: Brunswick Junior High School, **Max Capacity:** 30

Dates: Monday, June 24th – Thursday, August 15th

(program runs Mon-Thurs, NO CAMP FRIDAY'S)

Time: 8:00am – 4:00pm, most days are spent off site

Instructor: Brunswick Parks and Recreation Department Staff

Coordinator: Aaron Cropley, acropley@brunswickme.org

The Parks and Recreation Department encourages individuals with disabilities to register for this program. For more information, contact the Recreation Department at 725-6656, email us at recprograms@brunswickme.org or visit our website: www.brunswickme.org/parks-recreation

Summer Day Camp Dates & Fees 2024

Early Bird discounts are only applicable to registrations paid in full by April 1st, 2024 and they are applicable for 4 week enrollments or 8 week enrollments.

\$25 Sibling discount is automatically applied to each additional child when registering for 4 or 8 weeks.

Alex Labbe Foundation Scholarships are available for families seeking financial assistance to attend Summer Day Camp. Scholarship applications are available at the Recreation Center or online by visiting our website. For families seeking a scholarship, registration and \$50 deposit per camper will be required to secure your spot in camp. Please contact the Recreation Department at recprograms@brunswickme.org to inquire about a scholarship or call 725-6656 Monday-Friday, 8:30am-4:30pm to speak with office staff.

Automated Weekly Payment Plans are available for families seeking an alternative pay schedule for Summer Day Camp enrollment. A minimum of \$50 deposit per participant registration is required at the time of registration for families seeking a payment plan. Payment plans are not available with online registration. Please contact the Recreation Department at recprograms@brunswickme.org to inquire about a payment plan or call 725-6656 Monday-Friday, 8:30am-4:30pm to speak with office staff.

Kinder Camp (Kindergarteners)

Only available for Brunswick Residents

Multiple Week Selection	Program Dates	Resident Fee	Early Bird Resident Fee
3 Weeks	July 1 st -July 19 th	\$800	\$750
3 Weeks	July 22 nd - August 9 th	\$850	\$800
6 Weeks	July 1 st - August 9 th	\$1600	\$1500

Imagination, Explorers & Adventure Camp (Grades 1-6)

Multiple Week Selection	Program Dates	Resident Fee	Early Bird Resident Fee	Non-Resident Fee	Early Bird Non-Resident Fee
4 Weeks	June 24 th -July 19 th	\$625	\$575	\$831	\$781
4 Weeks	July 22 nd - August 15 th	\$675	\$625	\$898	\$848
8 Weeks	June 24 th - August 15 th	\$1200	\$1100	\$1596	\$1496

Expedition Camp (Grades 7-8)

Multiple Week Selection	Program Dates	Resident Fee	Early Bird Resident Fee	Non-Resident Fee	Early Bird Non-Resident Fee
4 Weeks	June 24 th -July 18 th	\$850	\$800	\$1131	\$1081
4 Weeks	July 22 nd - August 15 th	\$900	\$850	\$1197	\$1147
8 Weeks	June 24 th - August 15 th	\$1700	\$1600	\$2261	\$2161

Due to high demand, individual week registrations will open on May 1 pending the number of spaces remaining at that time. The number of spots available per week will be determined by the number of 8 and 4 week registrations received and based on capacity limits at each camp location.

Summer Day Camps

Teen Intensive Dance Camp

Students will receive instruction in jazz, hip hop and contemporary dance styles. The day will begin with high energy warm-ups with both jazz and ballet techniques. Each day will have a slightly different schedule, depending on which genre we are working on that day. We will be building 3-4 pieces throughout the week, in preparation for a showcase on Friday, July 19th. Each piece will demonstrate a different genre of dance. This is a high energy camp with an incredible amount of room for dancers to learn, grow and develop the essential techniques it will take to become a truly skilled dancer. This camp is open to all dance levels! **We are excited to announce that the final day of camp and the final demonstration will be held at Brunswick High Schools' Crooker Theater!** Any friends and family are welcome to attend the final demonstration on July 19th and should plan to arrive at 4:30pm!

Ages: Ages 13-18 as of the start of camp

Dates: Monday-Friday, July 15th-July 19th

Time: 1:30pm-4:30pm

Location: Brunswick High School , Cafeteria M-Th, Crooker Theater Fri.

Fee: \$150 Residents / \$200 Non-Residents

Youth Hip Hop Dance Camp

Students will learn various styles of hip hop and choreography. Instruction in the fundamentals and vocabulary of hip-hop will help to round out the week. Techniques include; popping, locking, waving, isolation, breaking and tumbling. Students will also learn musicality and learn strength and conditioning. We will finish out each day with some dance games, to end on a high note. This program is open to dancers of all levels! **We are excited to announce that the final day of camp and the final demonstration will be held at Brunswick High Schools' Crooker Theater!** Any friends and family are welcome to attend the final demonstration on July 26th and should plan to arrive at 4:30pm!

Ages: Ages 8-12 as of the start of camp

Dates: Monday-Friday, July 22nd—July 26th

Time: 1:30pm-4:30pm

Location: Brunswick High School , Cafeteria M-Th, Crooker Theater Fri.

Fee: \$150 Residents / \$200 Non-Residents

Instructor: Kate Andreu

Coordinator: Aaron Cropley, acropley@brunswickme.org



About the Instructor

Kate Andreu has been in the performing arts industry for over 20 years, working on numerous performance and production projects all over the state. She is a USM alumna with a BS in social work and minor in dance. She was choreographer for USM 5 years running and has been invited by Professor Maria Tzianabos to guest teach in the USM dance program. Kate is owner and founder of the Urban Dynamix Dance Company and dance program of Brunswick Maine. She has successfully designed and implemented dance enrichment programs, master classes and workshops in Portland, Freeport, and greater Midcoast areas. When she is not heading up these programs, Kate works as choreographer for several theater companies such as Freeport Players, Community Little Theatre, Monmouth Players and Midcoast Youth Theatre. Kate is a well-known performing arts professional with an energy level to match. She looks forward to engaging with her students and helping them find a love of dance and performance!

Summer Day Camps

Golf For Kids

Participants will receive instruction on Grip Stance and Full Swing Techniques as well as chipping, putting and pitching instruction throughout the duration of this 4-week program. This program includes contests with the opportunity for prizes! Your own golf clubs are recommended, but some clubs are available to use for the program if needed.

(Please provide advanced notice)

About the Golf Course: The Brunswick Golf Course is a premier golf course offers an outstanding teaching facility that includes a driving range, chipping area, pitching area, putting green, and sand play.

About the Instructor

Coach Gerry has been a golf instructor in the local area and has been involved with the Brunswick Parks & Recreation Department for many years. He has experience and an extensive teaching background with youth, teens, and adults. His positive style offers a fun experience in learning the game of golf.

Ages: Ages 8-16 as of the start of camp

Dates: Thursdays, June 27th, July 11th, 18th, 25th (No Class July 24th)

Time: 10am-10:45am

Location: Brunswick Golf Club

Fee: \$76 Residents / \$102 Non-Residents

Instructor: Gerry Caron, Former Bowdoin College & Former Mt Ararat Varsity Golf Coach

Coordinator: Aaron Cropley, acropley@brunswickme.org



Maineix Lacrosse Camp

This mini-camp offers a developmentally appropriate lacrosse curriculum designed to help players of all different skill levels the chance to learn, enhance, or refine their game!

Equipment Needed

Boys: Helmet, shoulder pads, arm pads, gloves, stick, mouthguard, and appropriate footwear.

Girls: Goggles, stick, mouthguard, appropriate footwear

About Maineix Lacrosse

Maineix Lacrosse is a premier lacrosse club in Maine that offers programs for K-12th graders. Founded in 2009, Maineix prides itself on a high level of organization, clear & efficient communication and elite coaching. With players from over 115 Maine towns. Maineix Lacrosse welcomes all players to join their lacrosse family!

Grades: 3-8 as of Fall 2024

Dates: Monday–Thursday, June 26th– June 29th

Time: 9:30am-12pm

Location: Crimmins Field

Fee: \$125 Residents / \$165 Non-Residents

Instructor: Maineix Lacrosse Coaches

Coordinator: Aaron Cropley,

acropley@brunswickme.org



Summer Day Camps

Kayaking and Stand-Up Paddleboard Camp with Sea Spray Kayaking

Spend the week paddling and having fun with Seaspray Kayaking Instructors and Guides at Thomas Point Beach in Brunswick! Participants will have the chance to play a variety of games and learn rescue and navigation skills while paddling kayaks, paddleboards and canoes. All paddlers will receive a T-Shirt and Certificate on the last day! Participants should be prepared for a change in weather conditions and bring a snack and drink each day. If a change in the schedule is made, all participants will be notified by phone.

Suggested Items to Bring: Bathing Suit/Nylon Shorts, Towel, Sunglasses/Strap, Sunblock/Hat/ Lip Balm, Windbreaker/Fleece/Rain Jacket, Water Shoes/Sandals/Old sneakers, Water Bottle/Snacks

Optional: Water Proof Camera/ Own Kayak/Lifejacket/Wetsuit

Ages: Ages 8 and Up as of the start of camp

Dates: Monday-Friday, June 24th—June 28th

Time: 1pm-4pm

Location: Thomas Point Beach

Fee: \$260 Residents / \$345 Non-Residents

Class Limit: 15

Instructor: Sea Spray Kayaking Instructors

Coordinator: Aaron Cropley, acropley@brunswickme.org



Girls Basketball

Throughout this basketball camp, emphasis will be on skill development, fundamentals of the sport and having fun! Participants will improve their technique through skill drills and games. Sam Farrell, Head Coach of the State Champion Brunswick High School Varsity Girls Basketball program, will be leading our Summer Basketball Camp for girls entering Grades 3 – 8 in fall of 2024. Coach Farrell has been coaching basketball for the last 25 years and 20 of those years have been at the varsity level! Join Coach Farrell to improve your game over the summer!

Grades: Grades 3-8 as of Fall 2024

Dates: Monday-Thursday, June 24th, 25th, 26th, 27th

Time: 9am-11:30am

Location: Brunswick High School Gymnasium

Fee: \$75 Residents / \$100 Non-Residents

Instructor: Sam Farrell, Brunswick High School Varsity Girls Basketball Coach

Coordinator: Aaron Cropley,
acropley@brunswickme.org



**ONLINE PROGRAM REGISTRATION IS AVAILABLE AT
BRUNSWICKME.ORG**

Or stop by our office located at
220 Neptune Drive, Brunswick Maine

Summer Day Camps

Youth Softball

The Parks and Recreation Department in conjunction with The Edge Softball Academy is offering a half day Summer Softball Camp at Orion Field. The Summer Softball Camp will focus on fundamental skill development and game simulation. Emphasis will be placed on safety, fun and skill development. Please bring a glove, wear cleats and bring clothes for warm or cool conditions. Come and join us for a fun-filled week and improve your game!

Ages: Ages 6–13 as of the start of camp

Dates: Monday-Thursday, July 15th—July 18th

Raindate: Friday, July 19th

Time: 9am-12pm

Location: Orion Field

Fee: \$210 Residents / \$280 Non-Residents



Summer Baseball

The Parks and Recreation Department in conjunction with The Edge Baseball Academy is offering a half day or full day Summer Baseball Camp at Lishness Field. The Summer Baseball Camp will focus on fundamental skill development and game simulation. Emphasis will be placed on safety, fun and skill development. Please bring a glove, wear cleats and bring clothes for warm or cool conditions. Come and join us for a fun-filled week and improve your game!

Ages: Ages 7–12 as of the start of camp

Dates: Monday-Thursday, June 24th-June 27th Raindate: Friday, June 28th

Time: Full Day—9am-4pm

Half Day—9am-12pm OR 1pm-4pm

Location: Lishness Field

Fee: Half Day—\$210 Residents / \$280 Non-Residents

Full Day—\$310 Residents / \$410 Non-Residents

Instructor: The Edge Academy

Coordinator: Aaron Cropley, acropley@brunswickme.org

About the Edge Academy

The Edge Academy Staff will be running the clinic. Edge Academy is unmatched in the state of Maine. Our professional instructors are all former professional players, collegiate and high school coaches. We pride ourselves and being in the forefront of all the latest technology, analytics and development that is available today. We also pride ourselves in employing some of the area's best collegiate players.



One day at Hadlock Field—Home of the Sea Dogs

The professional coaches of The Edge Academy, Maine Lightning and Maine Thunder will present each sport in a teaching environment using techniques where coaches strive to improve all aspects of the game. While most of the camp week will take place in Brunswick, one day will be at historic Hadlock Field. Each player will receive a ticket to a Seadogs game the following week. Parents will be given a link by email to a discounted ticket purchase so they can enjoy the game with their son or daughter. Bring your glove, bat, sunscreen, water bottle, lunch and come have some fun.

Day at Hadlock for Brunswick: June 27th

Summer Day Camps

Soccer Day Camp

The Brunswick Parks & Recreation Department and the Maine Lightning Soccer Club are excited to offer a week of soccer at Edwards Field this summer! This week promises to be a first-rate, age-appropriate experience for boys and girls so they will develop their skills, knowledge, and love of the world's most popular game! Each camper will receive a new soccer ball, a camp t-shirt, as well as a freeze pop treat each day. A rain date of August 2nd will be held in the event of inclement weather.

Ages: Ages 4-14 as of October 15, 2024

Dates: Monday– Thursday, July 29th– August 1st

Raindate: Friday, August 2nd

Time: **Ages 4-6**— 8:30am-9:30am

Ages 7-14— 9am-11am

Location: Edwards Field

Fee: **Ages 4-6**— \$90 Residents

\$120 Non-Residents

Ages 7-14— \$140 Residents

\$186 Non-Residents

Instructor: Maine Lightning

Coordinator: Aaron Cropley, acropley@brunswickme.org



Track and Field

The Rec. Department is offering Track & Field training this summer with twice-weekly practices! Emphasis will be placed on developing and improving technique and performance in different events like sprints, distance runs, relays, hurdles, long jump, high jumps, shot put, discus, race walking & turbo javelin. Children are encouraged to practice different events according to their age, interest and ability.

We are currently looking for someone to lead this long-standing Parks and Rec program! If you are interested please reach out to Aaron Cropley, acropley@brunswickme.org. Adult and student volunteers are welcome and needed to assist track staff!

Not included in this program are weekly Maine USATF Sanctioned Meets. Transportation will not be provided to track meets and guardians are responsible for chaperoning athletes. To Participate in the Meets, athletes will also need to purchase a USATF Membership online at www.usatf.org (\$25) (Membership is not needed if just participating in practices)

Ages: Ages 6-14 as of December 31, 2024

Dates: Mondays and Wednesdays, July 1st – August 6th

Time: **Ages 6-10**— 5pm-6pm

Ages 11-14— 6pm-7pm

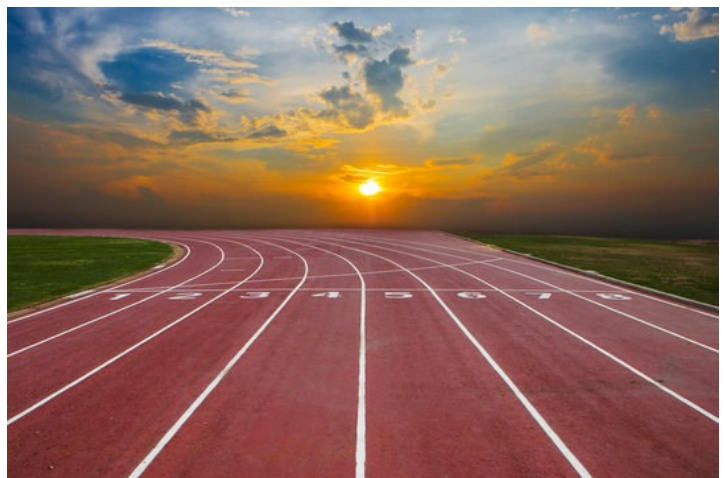
Location: Brunswick High School Track

Fee: \$90 Residents / \$120 Non-Residents

Instructor: TBD

Coordinator: Aaron Cropley,

acropley@brunswickme.org



**ONLINE PROGRAM REGISTRATION IS AVAILABLE AT
BRUNSWICKME.ORG**

Or stop by our office located at
220 Neptune Drive, Brunswick Maine

Summer Day Camps

Summer Evening Field Hockey Clinics On Wednesday's!

Join Brunswick High School coach Carrie Sullivan, BJHS coach Erinkate Morrison and BHS players for three evenings of field hockey fun. New to field hockey? Join us! Experienced player? Join us! Coaches meet players at their level and grow their field hockey skills through fun drills and games. Goalie instruction will be offered to anyone wanting to try!

About the staff:

Carrie Sullivan is starting her fifth season as Head Varsity Field Hockey Coach at Brunswick High School. She played field hockey and basketball at Middlebury College and has coached both sports at all levels for over 25 years.

As a former college athlete, Erinkate "EK" Morrison has been playing or coaching field hockey for over 30 years. She brings her love of defense, work ethic, and teamwork to Brunswick. EK currently coaches 8th grade field hockey at BJHS and formally coached in Oxford Hills for seven years. Both Carrie and EK teach 6th grade at Brunswick Junior High School.

Please bring: shin guards, mouth guard, water bottle, and sneakers. Program shirt is included!

Grades: Grades 3-8 in Fall 2024

Dates: July 10, 17, 24

Time: 5:15pm-6:45pm

Location: Brunswick Junior High School

Fee: \$65 Residents \$86 Non-Residents

Instructor: Carrie Sullivan, Erinkate Morrison

Coordinator: Aaron Cropley,

acropley@brunswickme.org



Field Hockey Camp

This clinic is a can't-miss for any field hockey enthusiast and is a great program for introductory players as well! The program provides an introduction to the sport for those who have never played, as well as skill enhancement for those who have or want to warm up before the season. Players will focus on basic skill development through a series of fun games that help players become comfortable with a stick in the field, as well as focusing on mastering fundamental skills & game situation scrimmaging.

Please bring: shin guards, mouth guard, water bottle, and sneakers. Program shirt is included! Harrow Sports and a USA Field Hockey Grant have provided the Field Hockey Sticks to use if you'd like to borrow one!

Grades: Grades 1-5 in Fall 2024

Dates: Monday-Thursday, July 29th-August 1

Raindate Friday, August 2

Time: 8:30am-10:30am

Location: Brunswick Junior High School

Fee: \$80 Resident \$106 Non-Resident

Instructor: Sadie Robertson/ Ally Feltis

Coordinator: Aaron Cropley, acropley@brunswickme.org



Skills Covered:

Dribbling, Passing, Receiving, Dodging, Shooting, Offensive Concepts, Defensive Concepts, Basic Rules, Game Play

Summer Day Camps

Multi-Sport Camp-Baseball/Lacrosse/Football/Soccer/Basketball/Tennis/Ultimate Frisbee

Did you know that many sports medicine organizations recommend against concentrating on a specific sport? Join Brunswick High School Coaches: Ben Clark-Basketball, Matt Aceto-Baseball, Ben Harmon-Lacrosse, Mark Renna-Football & Coaches Dallas Phillips-Soccer and Kyle Labbe-Assorted Sports.

Each day athletes will have almost instruction in each of the offered sports with time built into the schedule for lunch and breaks. Throughout the day athletes will rotate between sport sessions. Each session will focus on fundamental skill development for each sport with emphasis placed upon safety and fun!

Players should bring a water bottle, lunch, and hearty snacks for a morning and afternoon break. Athletes should also come to camp prepared for changing weather conditions and with clothing suitable for each session!

"Assorted sports" encompasses a diverse range of athletic activities that offer something for everyone. From team-based competitions to individual pursuits, assorted sports provide opportunities for physical activity, skill development, and social interaction. Whether it's the fast-paced action of ultimate frisbee, the crafty gameplay of floor hockey, or the precision of disc golf, assorted sports cater to a wide range of interests and abilities. Participants can explore new activities, challenge themselves, and enjoy the thrill of competition in a dynamic and inclusive environment. With options to suit every preference and skill level, assorted sports promote health, fitness, and fun for all.

Grades: Grades 3-9 in Fall 2024

Dates: Monday-Friday, July 8th-July 12h

Time: 9am-4:30pm

Location: Brunswick High School

Fee: \$150 Residents / \$200 Non-Residents

Instructors: Ben Clark-Basketball, Matt Aceto-Baseball, Ben Harmon-Lacrosse, Mark Renna-Football, Dallas Phillips-Soccer and Kyle Labbe-Assorted Sports

Coordinator: Aaron Cropley, acropley@brunswickme.org



BRUNSWICK PARKS AND RECREATION DEPARTMENT

NOW HIRING!



**Join the Parks & Recreation Department
Full Time or Part-time Staff!**

Full Time, 40 Hours a week plus benefits

- Parks Maintenance Worker, \$19.84–24.92 starting pay
- Child Care LEAD Teacher, \$18.50–\$21.00 starting pay

Part Time and Seasonal Employment

- Park Ranger (Summer Seasonal position, Full time) \$19.50
- Parks Maintenance Worker (Seasonal and Part Time), \$19.50
- Child Care Assistant Teacher (multiple positions), \$16.50–\$18.00
- Coffin Pond Gate & Concession Staff, \$14.25–\$15.25
- Coffin Pond Site Supervisor and Waterfront Director, \$16.50–\$18.00
- Coffin Pond Lifeguard Staff, \$15.50–\$17.00
- Water Safety Instructors, \$17.00–\$20.00 (based on experience)
- Learn to Swim Aides, \$14.25–\$15.00
- Summer Camp Counselors, \$14.25–\$16.00
- Summer Camp Site Supervisors, \$18.00–\$20.00
- Summer Camp Assistant Site Supervisors, \$16.00–\$18.00
- Kinder Camp Counselors, \$16.50–\$18.00 from June 24–August 9
- Customer Service Rep (multiple positions), \$16.50–\$18.00



**To learn more about or job opportunities, call
725-6656, email recprograms@brunswickme.org
or visit brunswickme.org/Jobs.aspx**

Swim Lessons

American Red Cross Swim Lessons at Coffin Pond

The Brunswick Parks and Recreation Department is offering American Red Cross Swim lessons at Coffin Pond once again this summer! Level 1: Introduction to Water Skills, Level 2: Fundamentals of Aquatic Skills, and Level 3: Stroke Development will be taught*. Level 1 Students will learn how to feel comfortable in the water and safely enjoy it. Level 2 students will learn basic swimming skills. Level 2 students should comfortably be able to put their face in the water and make a few feet of forward movement with minimal, or no, flotation. Level 3 students will engage in guided practice that will help students improve their stroke. Additionally, classes will teach children to develop good habits in, on, and near water, to become comfortable in the water, to learn and refine new strokes, and to become stronger, safer swimmers. To ensure safety of all swimmers, class size will be limited.

Lessons are taught at Coffin Pond by certified American Red Cross Instructors. Coffin Pond is an outdoor, chlorinated swimming facility that touts a zero-depth entry that is great for beginners and a 55' waterslide! Children receiving instruction at Coffin Pond will gain experience swimming in all areas of Coffin Pond and each day will include a different safety topic. Each lesson will also include a free play period where children can explore and practice their technique!

***Due to facility constraints at Coffin Pond and requirements for mastering level 3, participants in level 3 will not be eligible to pass onto level 4. Enrollment in Level 3 is only recommended for beginner or intermediate Level 3 participants who do not expect to receive a certification of mastery by the end of the session. If you have questions about this restriction, please reach out to our office to discuss whether or not it is appropriate to enroll your Level 3 swimmer in the program!**

Financial assistance is available for families who qualify. Visit brunswickme.org/parks-recreation to download our Financial Aid application. To learn more about this opportunity, email recprograms@brunswickme.org or reach out to office at 725-6656!

Ages: 5 and Up as of the start of the program

Dates: Monday and Wednesday, June 24h-July 24th*

Time: 5:15pm-6pm

Location: Coffin Pond Recreation Area, River Road in Brunswick

Fee: \$125 Residents / \$166 Non-Residents

Instructor: American Red Cross Certified Instructors

Coordinator: Julie Raines

or

Ages: 5 and Up as of the start of the program

Dates: Tuesday and Thursday, June 25th-July 25th*

Time: 5:15pm-6pm

Location: Coffin Pond Recreation Area, River Road in Brunswick

Fee: \$125 Residents / \$166 Non-Residents

Instructor: American Red Cross Certified Instructors

Coordinator: Julie Raines

***No Classes will be held the week of the 4th of July!**



Summer Day Camps

Elementary Art

Do you love art? If so, this is the camp for you! Brunswick School Art Teachers, Kari McCarthy, Rachel Carswell and Bonnie Gilman, will guide children entering grades K-5 through a variety of different art projects including drawing, painting, clay and sculpture projects. Campers will get the opportunity to work with a variety of different art mediums in a fun and creative atmosphere. All art materials are provided, but be sure to bring your own snack! Children entering grades K & 1, grades 2 & 3 and grades 4 & 5 will be grouped together in separate classrooms. There is a limit of 16 children per grade-level grouping in each session offered!



Grades: Grades K-5 in Fall 2024

Dates: Monday-Friday, June 24th-June 28th

Time: 9:30am-11:30am

Location: BJHS

Fee: \$100 Residents / \$133 Non-Residents

Instructor: Brunswick School Art Teachers, Kari McCarthy, Rachel Carswell, Bonnie Gilman

Coordinator: Aaron Copley, acopley@brunswickme.org

or

Grades: Grades K-5 in Fall 2024

Dates: Monday-Friday, June 24th-June 28th

Time: 1:00pm - 3:00pm

Location: BJHS

Fee: \$115 Residents / \$153 Non-Residents

Instructor: Brunswick School Art Teachers, Kari McCarthy, Rachel Carswell, Bonnie Gilman

Coordinator: Aaron Copley, acopley@brunswickme.org



Teen Art

Bring your ideas and creative energy while you spend 4 days in our art studio learning new skills and making art! Campers will have the opportunity to explore different art concentrations including ceramics, sculpture, fiber arts, drawing and painting. All art supplies will be provided. Bring lunch and a snack!

Grades: Grades 6-8 in Fall 2024

Dates: Monday, Tuesday, Thursday, Friday, June 17th, 18th, 20th, 21st. (No session Wednesday, June 19th.)

Time: 9:30am-2:30pm

Location: BJHS

Fee: \$225 Residents / \$299 Non-Residents

Instructor: Brunswick School Art Teachers, Kari McCarthy, Rachel Carswell

Coordinator: Aaron Copley, acopley@brunswickme.org

ONLINE PROGRAM REGISTRATION IS AVAILABLE AT
BRUNSWICKME.ORG

Or stop by our office located at
220 Neptune Drive, Brunswick Maine

Summer Day Camps

Mad Science Summer Day Camp-Eureka! Inventor's Camp

Inspire the inventor and scientist in you during this week of discovery and invention. Each day children will be given a series of challenges which must be overcome using basic materials, simple machines, tips from world famous inventors and the most important thing of all – your mind! If you were stranded on a desert island how would you survive? You will need to build shelter, find food and purify water, protect yourself and your teammates from the elements and find a way off the island. Journey to the future and examine the ultramodern inventions of the 23rd century. Then design the future - today! Create mini light sabers, mini-space stations, and electric flying contraptions. With a little bit of ingenuity, you'll construct catapults and forts, build Rube Goldberg contraptions that perform simple tasks, and experiment with humanoid robots. Take home projects include ping-pong ball launchers, mousetrap contraption cars, mystery sticks, tubular blow darts, and other wacky contraptions. While Thomas Edison said, "invention is 10% inspiration and 90% perspiration" this camp is 100% FUN!

Grades: Grades 1-6 in Fall 2024

Dates: Tuesday-Friday, July 8th—12th

Time: 9am-3pm

Location: Harriet Beecher Stowe School

Fee: \$350 Residents / \$465 Non-Residents

Instructor: Mad Science of Maine

Coordinator: Aaron Cropley, acropley@brunswickme.org



Mad Science Summer Day Camp-Spy Academy

Suspects, schematics, sleuthing, and of course science all come together in this exciting camp designed to help train your secret agent to connect the dots using science to help solve a crime and hone their skills in evidence gathering & analysis. Come join us to step into the shoes of a detective and go on a fascinating journey into the world of detection, forensics, spy technology, and classified information!

Grades: Grades 1-6 in Fall 2024

Dates: Monday-Friday, July 22nd—July 26th

Time: 9am-3pm

Location: Harriet Beecher Stowe School

Fee: \$350 Residents / \$465 Non-Residents

Instructor: Mad Science of Maine

Coordinator: Aaron Cropley,
acropley@brunswickme.org



**ONLINE PROGRAM REGISTRATION IS AVAILABLE AT
BRUNSWICKME.ORG**

Or stop by our office located at
220 Neptune Drive, Brunswick Maine

Summer Day Camps

Mad Science Summer Day Camp-Mad Lab Medley

For the camper who wants to try it all this Mad Lab variety camp is for you! This camp has Mad Science's coolest bits and pieces that will make you go scientifically bonkers! It's one of our new favorites with fast paced experiments one after another in topics like Laser Light, Electricity, Power and Energy, Che-mystery, and Magnets! Experience FIZZ"-ical Phenomena by stirring up some crazy concoctions, create cool gases, electroplate coins, and make crystals. Dive into electricity by experimenting with Squishy Circuits and mini Van De Graff sticks. Learn about power and energy by building chemical batteries and solar powered devices. Use lasers to send music across the room and print 3d Holograms. Learn the magic behind magnets by building speakers, levitating magnets, and making magnetic putty. In this camp, you will certainly become a certified "Mad" Scientist! It's a camp so great it's Super-Duper!



Grades: Grades 1-6 in Fall 2024

Dates: Monday-Friday, August 5th-August 9th

Time: 9am-3pm

Location: Harriet Beecher Stowe School

Fee: \$350 Residents / \$465 Non-Residents

Instructor: Mad Science of Maine

Coordinator: Aaron Cropley, acropley@brunswickme.org



Robotics

The Brunswick Parks and Recreation Department, alongside Maine Robotics of the University of Southern Maine, is looking for STEM enthusiasts to join in a Robotics Camp this summer! Campers will learn about engineering and programming using the LEGO MindStorms Robotics Kit. This camp is for any level of LEGO Roboteer so it does not matter if you are a rookie or a veteran; this camp can take you and help move your skills forward! Camp starts with some basics and staff will work quickly to assess campers' knowledge and skill sets before breaking up into smaller groups!

For more information about Maine Robotics visit <https://usm.maine.edu/stem-outreach-services/>

To view frequently asked questions about camps visit <https://usm.maine.edu/stem-outreach-services/camp-faq/>

Ages: Ages 9-12 as of the start of camp

Dates: Monday-Friday, July 24th-July 28th

Time: 9am-3:30pm

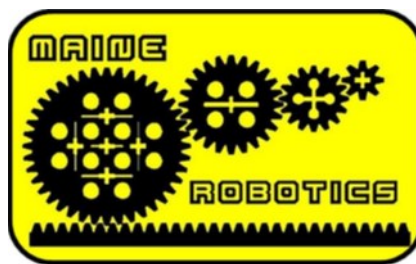
Location: Kate Furbish School

Fee: \$395 Residents / \$525 Non-Residents

Instructor: USM Maine Robotics

Coordinator: Aaron Cropley,

acropley@brunswickme.org



Summer Day Camps

Summer Theater Camp for Grades 3-5 **Acting Adventures: An Introductory Theater Camp**

Join us for a week of creativity, confidence-building, and fun at our Summer Theater Camp for students in grades 3-5! Our camp is designed to introduce young performers to the exciting world of theater through a series of engaging activities and workshops.

Learn Basic Theater Skills:

- Explore fundamental theater concepts and terminology.
- Develop acting skills through games and exercises.
- Enhance creativity and imagination through improvisation.
- Gain confidence in expressing ideas and emotions.
- Improve public speaking skills through performance opportunities.

Prepare for the Spotlight:

- Rehearse and refine a short play throughout the week.
- Showcase your talents in a final performance for friends and family.

What to Bring:

- Comfortable clothing for movement.
- Water bottle and snacks.
- Enthusiasm and a willingness to learn!

Join Us for a Theatrical Adventure!

Our Summer Theater Camp offers a supportive and encouraging environment for young performers to explore their creativity, build confidence, and make lasting memories. Whether your child is a seasoned performer or new to the stage, our camp provides a fun and enriching experience for all. Sign up today and let the spotlight shine on your child!

Grades: Grades 3-5 in Fall 2024

Dates: Monday-Friday, June 24th-28th

Time: 9am-12:30pm

Location: Crooker Theater, Brunswick High School

Fee: \$150 Residents / \$200 Non-Residents

Class Limit: 15

Instructor: Megan Bosarge

Coordinator: Aaron Cropley,
acropley@brunswickme.org



ONLINE PROGRAM REGISTRATION IS AVAILABLE AT
BRUNSWICKME.ORG

Or stop by our office located at
220 Neptune Drive, Brunswick Maine

Summer Day Camps

Summer Theater Camp for Grades 6-8 **Creative Theater: An Acting & Playwriting Workshop**

Welcome to our one-week intensive acting and playwriting workshop for middle school students! Join us for an exciting week of creativity, collaboration, and performance as students develop their acting and writing skills. This week-long workshop will culminate with a performance of student written short plays for friends and family.

Acting Skills Development:

- Learn the fundamentals of acting, including character development, voice projection, and stage presence.
- Participate in acting exercises and improvisation games to enhance creativity and confidence.
- Receive personalized feedback and coaching to improve performance skills.

Playwriting Workshops:

- Explore the art of storytelling through playwriting.
- Learn the structure of a play, including plot development, character arcs, and dialogue.
- Collaborate with peers to brainstorm ideas and write original short plays.

What to Bring:

- Comfortable clothing for movement.
- Water bottle and snacks.
- Writer's notebook or laptop for playwriting.
- Enthusiasm and a passion for theater!

Join Us for a Week of Theatrical Exploration!

Our Summer Theater Camp offers a unique opportunity for middle school students to immerse themselves in the world of theater, develop their acting and writing skills, and create unforgettable memories. Whether you're a budding actor or aspiring playwright, our camp provides a supportive and inspiring environment to nurture your talent. Sign up today and let your creativity shine on stage!

Grades: Grades 6-8 in Fall 2024

Dates: Monday-Friday, August 19th -23rd

Time: 9am-12:30pm

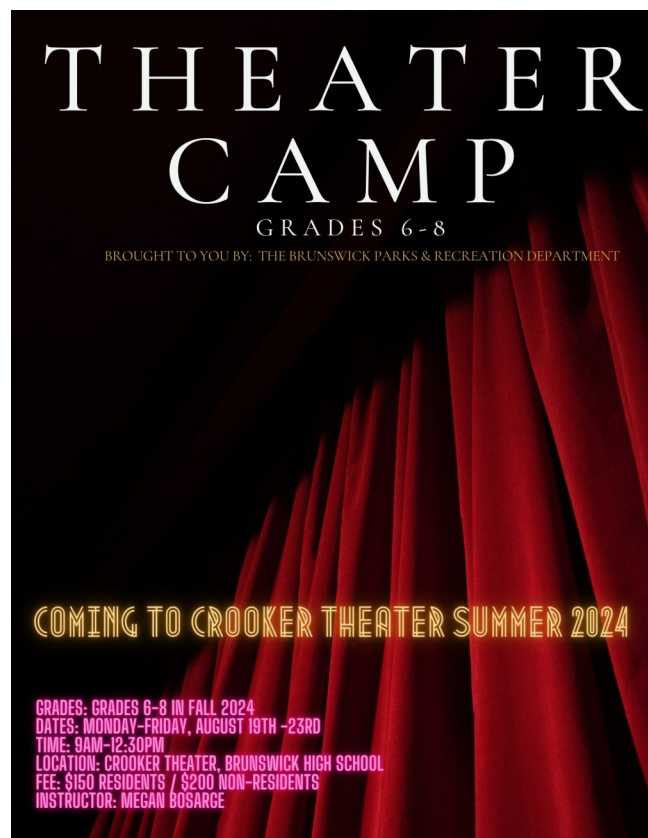
Location: Crooker Theater, Brunswick High School

Fee: \$150 Residents / \$200 Non-Residents

Class Limit: 20

Instructor: Megan Bosarge

Coordinator: Aaron Cropley, acropley@brunswickme.org



**ONLINE PROGRAM REGISTRATION IS AVAILABLE AT
BRUNSWICKME.ORG**

Or stop by our office located at
220 Neptune Drive, Brunswick Maine

FALL SOCCER: Brunswick Youth Soccer League

Registration Opens June 2!

The Brunswick Parks & Recreation Department will be offering the Brunswick Youth Soccer League (BYSL), this fall. This Soccer Program is designed for youth entering grades K – 8 in 2024 that reside in Brunswick. BYSL is one of the most popular and well-established youth programs in Brunswick. Our goals are to teach soccer skills in an environment that fosters player growth, encourages fun, and develops self-esteem for every player. Over the course of 7 weeks your child will enjoy improving their skills in a community-based program, playing with and against friends, neighbors, and classmates, and with a balanced and healthy level of competition.

Please indicate during registration if there is a potential conflict in your family's schedule that needs to be considered for team placement! Teams are put together based on careful evaluations to make them fair & balanced. Unfortunately, we cannot accommodate requests to change teams—once a player is placed on a team, there will be NO changes allowed. It is also impossible for us to accommodate placement requests other than those from siblings.

League Info

Grades: Grades K-8 (Grade based off Fall 2024)

Team Placement: You will be notified by September 6th, 2024

First Week of Practices: Week of September 9th (Divisions 2-8)

Practice and Game Schedules: Will be provided by coaches

First Game: Saturday September 14th between 8:00am & 1:00pm

Locations: Lishness Field, Harriet Beecher Stowe School, Shulman & Edwards Fields (you will be notified)

Picture Day: September 28th

Last Day of Games: Saturday, October 26th

Coordinator: Dave Coffill, dcoffill@brunswickme.org



Please indicate during registration if there is a potential conflict in your family's schedule that needs to be considered for team placement and practices! Teams are put together based on careful evaluations to make them fair & balanced. Unfortunately, we cannot accommodate requests to change teams.

ONLINE PROGRAM REGISTRATION IS AVAILABLE AT [BRUNSWICKME.ORG](https://brunswickme.org)

Or stop by our office located at
220 Neptune Drive, Brunswick Maine



'Kids on the Pitch' for Grades K & 1 (Combined Division for K & 1 Boys and Girls)

\$65

Children in Kindergarten and 1st grade will participate in BYSL's "Kids on the Pitch" fundamental program that focuses on learning the basics of soccer thru stations and drills followed by fun scrimmages. This program will meet on Saturday's (no weekday practices) and players will be placed on a coed team with a coach. Participants will receive a team shirt with registration!

Soccer League for Grades 2-3 (Separate Divisions for 2-3 Boys & 2-3 Girls)

\$75

Children in Grades 2-3 will be placed on separate teams with a coach and have one weekday practice and one Saturday game. Participants will receive a team shirt & a soccer ball with registration! (Balls will be handed out at the end of the season) Players are required to provide their own shin guards and socks. A mouth piece is optional and cleats are not needed at this age.

Soccer League for Grades 4-5 (Separate Divisions for 4-5 Boys & 4-5 Girls)

\$85

Children in Grades 4-5 will be placed on separate teams with a coach and have one weekday practice and one Saturday game. This division will get 2 Extra Weeknight Games under the Lights! Participants will receive a team shirt & a soccer ball with registration! (Balls will be handed out at the end of the season) Players are required to provide their own shin guards and socks. A mouth piece is optional and cleats are encouraged but not required at this age.

Soccer League for Grades 6-7-8 (Combined Division for 6-8 Boys and Girls)

\$90

Children in Grades 6-8 will be placed on combined teams with a coach and have one weekday practice and one Saturday game. This division will get 2 extra weeknight games under the Lights! Participants will receive a team Jersey & a soccer ball with registration! (Balls will be handed out at the end of the season) Players are required to provide their own shin guards and socks. A mouth piece is encouraged and cleats are strongly recommended at this age.

\$5 sibling discount available for each additional sibling registered*

Early Bird Pricing: June 2 to July 8 at 4:30pm receive \$10 off list price of program

Bike Rodeo & Family Safety Day

29th Annual Brunswick Bike Rodeo & Family Safety Day



Free event!

**Saturday, May 18
9 a.m. - NOON**

Brunswick Recreation Department
220 Neptune Drive, Brunswick

*(Rain Date: Sunday, May 19
Same Time and Location)*

**Bicycle and helmet
give-aways!**

**Bring your own bike, or
borrow one at the event.**

- Bike Registration with Brunswick PD
- Bicycle Safety Check from local professionals
- Helmet Check/Helmet Give-Aways
- Bicycle Rodeo Safety Course
- Bicycle Give-Aways



Kids to Parks Day

Swinging Bridge Park

*Bay Bridge Landing
Wetland Park*

**KIDS TO PARKS DAY
SATURDAY, MAY 18th**

**A NATIONAL DAY OF
OUTDOOR PLAY!**



*Kate Furbish Preserve
East and West*

Upper and Lower Mall

**SPEND THE DAY VISITING BRUNSWICK'S PARKS AND POST
A PICTURE USING #BRUNSWICKMEPARKS TO ENTER FOR
THE CHANCE TO WIN A \$50 CREDIT TOWARDS ANY
FUTURE PROGRAM REGISTRATION AND SWAG BAG OF
OUTDOOR SPORTS EQUIPMENT FROM THE PARKS &
RECREATION DEPARTMENT!**

A WINNER WILL BE ANNOUNCED MONDAY, MAY 20th!

Nathaniel Davis Park

Hambleton Ave Playground

**VISIT BRUNSWICKME.ORG FOR A LIST OF OUTDOOR SPACES
OR CALL 725-6656 FOR MORE INFORMATION**

*250th Anniversary
Park*

Movies in the Park

**The Northwest Brunswick Neighborhood Association
in Collaboration with Brunswick Parks & Recreation**



**HELD ON THE THIRD THURSDAY OF THE MONTH
THROUGHOUT JUNE, JULY AND AUGUST**

JOIN US JUNE 20TH, JULY 18TH & AUGUST 15TH, 2024

Backyard Campout

Brunswick Parks & Recreation Department

MAINE BACKYARD CAMP OUT

Sponsored by Brunswick
Parks & Recreation
and



July 12th-14th



AN ANNUAL FAMILY CAMPING ADVENTURE
IN YOUR OWN BACKYARD OR LIVING ROOM

.....
This program is free and open to residents or non-residents!
Register before Thursday, 7/11 at 3pm and be entered into a drawing for some
great camp out themed gifts! Drawing will be held at 3pm on the 12th!

For More Information call 207.725.6656 or visit www.brunswickme.org/parks-recreation

Music on the Mall Summer Concert Series



Brunswick
DOWNTOWN ASSOCIATION
presents

*6 pm Wednesdays
June 26 - Aug 28
Town Mall Gazebo*

Music

ON
THE

Mall

Brunswick Town Mall

JUNE 26

Blues Buzzards

JULY 3

The Clements Brothers

JULY 10

JimmyJo and the Jumbol'Ayuh

JULY 17

The Cobblestones

JULY 24

**Pat Colwell and the
Soul Sensations**

JULY 31

Pete Kilpatrick

AUGUST 7

**Bonnie Edwards and the
Practical Cats**

AUGUST 14

Maine State Music Theatre

AUGUST 21

Breakin' Strings

AUGUST 28

Dirty McCurdy

Bangor
Savings Bank

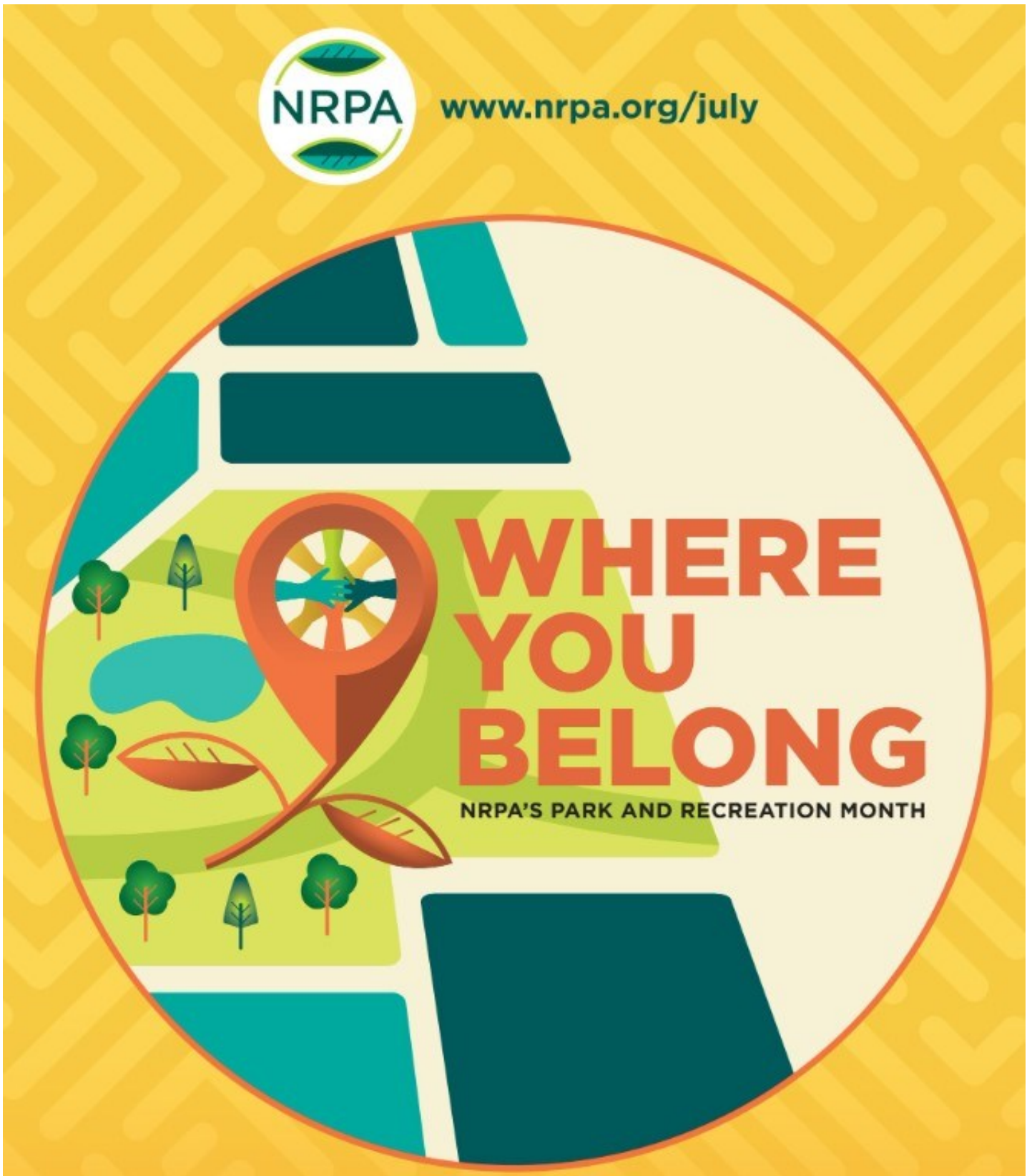
You matter more.

*Presenting
Sponsors*

portside
REAL ESTATE GROUP

DETAILS AT: brunswickdowntown.org

National Parks and Recreation Month



MRPA Discount Tickets

Discount Tickets for sale at the Parks and Recreation Department!



Combo Passes for Children and Adults
(children must be 48" or taller)

Your Cost: \$46.00

(Gate price \$57.00 / Savings of \$11.00)



Passes for Children (11 & Up) and Adults
ZOO ONLY

Your Cost: \$15.00

(Gate price \$18.00 / Savings of \$3.00)



General Admission Pass

Your Cost: \$22.00

(Gate price \$30.00 / Savings of \$8.00)

Sponsored by Maine Recreation and Park Association (MRPA)

Tickets must be purchased in-person during office hours,
Monday-Friday 8-4:30pm, at the Recreation Department

CASH ONLY

Tickets on Sale Mid-June!

Brunswick
maine



Coffin Pond



Coffin Pond is located in a beautiful mature white pine forest in Brunswick, Maine. Bordered on the west by the River Road and on the east by the Androscoggin River, the area features:

- ◆ Sandy Beach
- ◆ Chlorinated water
- ◆ Red Cross Certified Lifeguards
- ◆ A 55' Water Slide
- ◆ Playground Area
- ◆ Picnic sites
- ◆ Restrooms with changing facilities
- ◆ Concession Area
- ◆ Parking
- ◆ Level I & II American Red Cross Swim Lessons offered

Open June 15 — August 11
10am-5pm each day

DAILY GATE FEES

Resident

Adult (13 & over)	\$6.00
Youth (12 & under)	\$5.00
Group Rate(50 people or more)	\$4.00

Non-Resident

Adult (13 & over)	\$9.00
Youth (12 & under)	\$6.00
Group Rate(50 people or more)	\$5.00

NEW THIS YEAR

50% OFF after 3pm Monday thru Friday!

Private Rental, perfect for Birthdays, Graduation, Reunions or work related events!

RENTALS INCLUDE:

- **Private Access to Coffin Pond from 5-7pm on Friday evenings!**
- **Certified Lifeguards on Duty!**
- **Use of the restroom facilities, playground and picnic areas!**
- **Rentals allow for up to 50 guests!**
- **Rental Fee: \$500**



Coffin Pond is located on the River Road in Brunswick. Take Pleasant Street to the intersection of Pleasant Street and River Road. Turn onto River Road and travel a half mile to the entrance to Coffin Pond on the right.

Child Care

Brunswick Parks and Recreation Department Child Care

The Brunswick Parks and Recreation Department has established a WAITLIST for those who are looking for a Child Care Program for their young children ages 6 weeks to 4 years old. **Waitlist Deposit \$25**

Child Care Rates

Age	Resident Day	Resident Week	Non-Resident Day	Non-Resident Week
Infant 6 weeks—12 months	\$64	\$320	\$66	\$330
Toddler 12 –30 months	\$59	\$295	\$61	\$305
Preschool 30—60 months	\$59	\$295	\$61	\$305

DETAILS (subject to change)

- **Location:** Brunswick Recreation Center 220 Neptune Drive, Brunswick, ME
- **Age:** Accepting Children age 6 weeks - 4 years old
- **Days:** Monday - Friday from 7:00am - 5:30pm (meals not included)
- **Priority will be given to those looking for Full Time Care**, Part time will be offered based off available spots.
- **Infants: 6 weeks -12 months** Starting at \$320 per week (Increased fee for Non-Res)
- **Toddlers: 1 - 4 Years Old** Starting at \$295 per week (Increased fee for Non-Res)



HOW TO JOIN

Online:

<https://www.brunswickme.org/205/Online-Registration>

In Person: 220 Neptune Drive, Brunswick, ME 04011

Over the Phone: 207-725-6656

Email: recprograms@brunswickme.org

For more information please visit our website: <https://www.brunswickme.org/191/Parks-Recreation>

Child Care



**NOW
HIRING**

**PART TIME
CHILD CARE TEACHER &
FLOATER POSTIONS**

STARTING RATE \$16.50-\$18
5-20 HOURS/WEEK
WORKING WITH YOUNG CHILDREN AGES 6 WEEKS TO 4 YEARS OLD

SHIFTS COULD RANGE WITHIN THESE HOURS
OPENING SHIFT: 6:30AM-10:00AM
CLOSING SHIFTS: 2:00PM-6:00PM

FMI: recprograms@brunswickme.org
or 207-725-6656
www.brunswickme.org/Jobs



Child Care Employment Positions

Employment applications are required from all applicants and are available, along with the job description, at the Human Resources Office, 85 Union Street, Brunswick, or at www.brunswickme.org. Applications will be reviewed as received and the position will remain open until a suitable candidate is found.

Applications can be submitted to:
Jody Durisko, Human Resources Manager,
85 Union Street Brunswick, Maine 04011
or emailed to jdurisko@brunswickme.org

We are an Equal Opportunity Employer. The Town of Brunswick considers applicants for all positions without regard to race, color, religion, creed, sex (including pregnancy), national origin, age, physical or mental disabilities, sexual orientation, gender identity, gender expression, genetic information, or any other basis protected by federal, state, and/or local law.

ONLINE PROGRAM REGISTRATION IS AVAILABLE AT BRUNSWICKME.ORG

Or stop by our office located at

220 Neptune Drive, Brunswick Maine

Office Hours: Monday - Friday from 8:00am to 4:30pm

Parks and Recreation Department Facilities

Here you will find information for the parks and facilities available in the Town of Brunswick. For more information on any facility, contact the Parks and Recreation Department at 207-725-6656 during business hours. You may also download the complete Parks and Recreation A to Z listing (PDF) from our website for more detailed descriptions.

Athletic Fields

Bicycle Path Field–*Soccer*
Crimmins Field–*Soccer, Football, Lacrosse*
Edwards Field–*Baseball/Softball, Basketball, Soccer*
Lishness Park–*Baseball/Softball, Soccer*
Shulman Park–*Soccer, Lacrosse*
Stowe Field–*Football, Soccer*
Wildwood Field–*Soccer*

Community Gardens

Senior Garden
Tree Nursery



Dog Parks

Merrymeeting Dog Park

Ice Rinks

Coffin Pond Ice Skating Rink
Lishness Hockey Rink
Mall Ice Skating Rink

Boat Launches

Barnes Landing
Bay Bridge Landing Wetland Park
Maquoit Landing (Wharton's Point Landing)
Mere Point Boat Launch
Mill Street Canoe Portage
Pejepscot Dam Recreation Area
Princes Point Landing
Sawyer Park
Simpson's Point Landing
Water Street Boat Landings

Gateways & Beautification

250th Anniversary Park
Cooks Corner Gateway
Maine Street Flowers
Mill Street Lot
Pleasant Street Gateway

Indoor Facilities & Gymnasiums

Recreation Center
Stowe Gymnasium

Dennis Wilson serves as the Town's Parks and Facility Manager and Licensed Town Arborist.

Please contact him with questions or concerns regarding tree or facilities.

Phone: 725-4207

Email: dwilson@brunswickme.org

Parks and Recreation Department Facilities

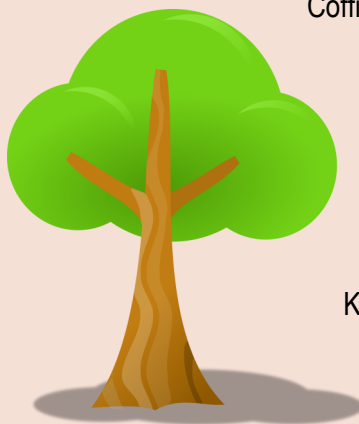
Here you will find information for the parks and facilities available in the Town of Brunswick. For more information on any facility, contact the Parks and Recreation Department at 207-725-6656 during business hours. You may also download the complete Parks and Recreation A to Z listing (PDF) from our website for more detailed descriptions.

Playgrounds

Coffin Pond Recreation Area
Edwards Field
Hambleton Avenue Playground
Longfellow Playground
Nathaniel Davis Park

Trails

Androscoggin River Bicycle Path
Bay Bridge Landing Wetland Park
Coffin's Ice Pond
Coffin Pond Recreation Area
Cox Pinnacle
Greater Commons
Lishness Park
Maquoit Bay Conservation Land
Pejepscot Dam Recreation Area
Sawyer Park
Town Commons



Parks & Natural Areas

250th Anniversary Park
Androscoggin River Bicycle Path
Bay Bridge Landing Wetland Park
Captain William A. Fitzgerald U.S.N.
Recreation and Conservation Area
Chamberlain Avenue Esplanade
Coffin Pond Recreation Area
Coffin's Ice Pond
Cox Pinnacle
Great Island Chain
Greater Commons
Kate Furbish Preserve
Lamb Park
Lower Mall
Maine Street Station Park
Maquoit Bay Conservation Land
Mill Street Canoe Portage
Nathaniel Davis Park
Pejepscot Dam Recreation Area
Pinette's Landing
Sawyer Park
Spring and McKen Lot
Swinging Bridge Park
Town Commons
Upper Mall

For more information about a particular park,
including directions and trail maps,
please call 725-6656 or visit
<https://www.brunswickme.org/206/Parks-Facilities>

Midcoast Athletic & Recreation Complex (MARC)

Creating a state-of-the-art regional hub for wellness, sports, and play at Brunswick Landing

The Midcoast Athletic & Recreation Complex (MARC) is a redevelopment of the vacant 10-acre parcel adjacent to the Brunswick Recreation Center. Per the Town's agreement with the US Navy, this land must be used for recreation purposes. Our goal is to turn this empty lot into a recreational sports and athletic complex that serves persons of all ages and abilities from across the region. Construction of the MARC will be divided into phases.

Phase 1 of the project will include:

- One Multi-purpose Synthetic Turf Field
- One Multi-purpose Natural Grass Field
- Eight Pickleball Courts
- Two Basketball Courts
- Two Tennis Courts
- Two Playgrounds (ages 2-5)
- One Skatepark
- Passive Elements: Outer Fitness Loop,
- Inner Walking Paths, Entry Plaza, Bus Drop-off,
Food Truck Parking, Bike Racks Benches, & Landscaping
- Utilities, Storage, and Ticket Booth

Visit <https://www.marcproject.org/>

or

Scan the QR Code for more info!



Future phases of the project will include:

- Aquatics facility
- Multi-purpose Ice Skating Rink
- Playground (ages 5-12)
- Restroom & Concessions

Check Out the Construction Progress on Phase 1 Tier 1A



Midcoast Athletic & Recreation Complex (MARC)



Community Support

Community support for the MARC is clear. When the Town of Brunswick surveyed residents, 70% said the MARC is "Very Important". In addition to the survey, the Town held focus groups, constituent stakeholder meetings, and a public forum. Support for the MARC cuts across all demographic categories and voting districts. You can view the community engagement results by going to www.marcproject.org

donate

DONATE

DONATE *Donate*

GOAL!



GRAND OPENING

THE MARC

(The Midcoast Athletic & Recreation Complex)



SATURDAY, JUNE 22, 2024

220 Neptune Drive, Brunswick, ME 04011

EVENTS & RIBBON CUTTING

- 8:00am: Pickleball Scramble AM Session
- 8:30am On your MARC get set GO 5k
- 9:15am: Family Fun Run
- 10:00am: Ribbon Cutting & Awards
- 11:00am: Skateboard Demo
- 1:00pm: Pickleball Scramble PM Session

For more information or to REGISTER for the 5k or
Pickleball Scrambles please visit
www.marcproject.org



The MARC Grand Opening Pickleball Scramble

\$25
Per Person
SWAG Bag Incl.



Saturday, June 22, 2024

Rain Date: Sunday, June 23, 2024

8:00am-10:00am (AM Session) - Beginner/Intermediate

10:00am-11:00am - Ribbon Cutting Ceremony

1:00pm-3:00pm (PM Session) - Advance 3.5 Rating & Up

Located at the NEW MARC Pickleball Courts
Next to the Brunswick Recreation Center
220 Neptune Drive, Brunswick, ME

- Playing on 8 Brand New Courts
- Women's and Men's Divisions per Session
- Each individual will play 6 game Guaranteed
- Games will be 10 minutes
- Adults 18 years or older only
- Top Winners determined by accumulated points



Prizes
Awarded to
the Top
Individuals!

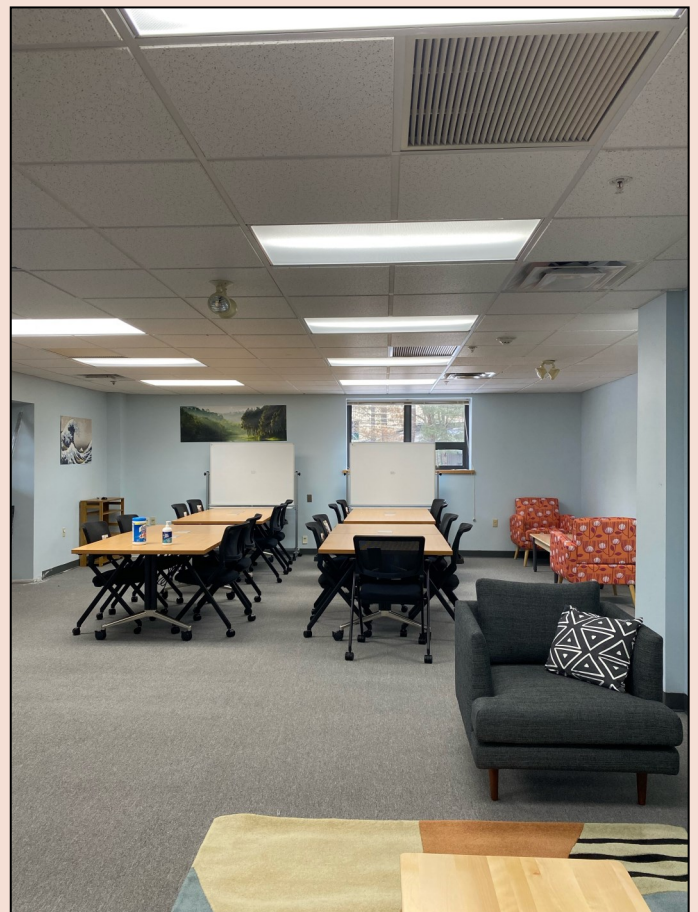


FMI: Call 207-725-6656 or recprograms@brunswickme.org
Online Registration on CIVICREC:
www.brunswickme.org/parks-recreation

Welcome Center

Community Room at the Welcome Center

The Welcome Center serves as a centralized resource for immigrants arriving in Brunswick. It provides a space for individuals accessing legal, workforce, and English language learning services and provides a hub for socializing, internet use, and childcare, among other resources. The Welcome Center is located in the back of the Brunswick Recreation Center at the Brunswick Landing. The entrance and parking lot can be found off Venture Ave.



The Community Room is staffed by Rodrigue Mwenge, courtesy of the Immigrant Resource Center of Maine.

It is open by appointment only from 9am-5pm Monday thru Friday.

You may contact Rodrigue by calling 207-816-1195 or by emailing rodrigue@ircofmaine.org

Welcome Center (Translation)

Community Room at the Welcome Center

O Welcome Center serve como um recurso centralizado para os imigrantes que chegam a Brunswick. Proporciona um espaço para pessoas que acedem a serviços de habitação, legal, força de trabalho e aprendizagem de língua inglesa e fornece um centro de socialização, uso da internet, programação pós-escolar, entre outros recursos. O Welcome Center está localizado no Centro Recreativo brunswick, utilizando a entrada e estacionamento do Venture Ave.

Em parceria com o Centro de Recursos Imigrantes do Maine, o Welcome Center é com a equipa de Rodrigue Mwenge e está aberto apenas por marcação das 9h às 17h de segunda-feira a sexta-feira. Você pode contactar Rodrigue ligando para 207-816-1195 ou enviando um e-mail rodrigue@ircofmaine.org

Le Welcome Center sert de ressource centralisée pour les immigrants qui arrivent à Brunswick. Il offre un espace pour les personnes qui accèdent à des services de logement, juridiques, de main-d'œuvre et d'apprentissage de l'anglais et fournit un centre de socialisation, d'utilisation d'Internet, de programmes parascolaires, entre autres ressources. Welcome Center est situé dans le centre de loisirs Brunswick, en utilisant l'entrée et le parking de Venture Ave.

En partenariat avec le Maine Immigrant Resource Center, le Welcome Center est avec l'équipe de Rodrigue Mwenge et n'est ouvert que sur rendez-vous de 9h00 à 17h00 du lundi au vendredi. Vous pouvez contacter Rodrigue en appelant le 207-816-1195 ou en envoyant un courriel rodrigue@ircofmaine.org

El Welcome Center sirve como un recurso centralizado para los inmigrantes que llegan a Brunswick. Proporciona un espacio para que las personas accedan a servicios de vivienda, legales, de fuerza laboral y de aprendizaje del idioma inglés y proporciona un centro para socializar, usar Internet, programación después de la escuela, entre otros recursos. El Welcome Center está ubicado en el Centro de Recreación de Brunswick utilizando la entrada y el estacionamiento de Venture Ave.

En asociación con el Centro de Recursos para Inmigrantes de Maine, el Welcome Center está gestionado por el equipo de Rodrigue Mwenge y está abierto con cita previa solo de 9 a.m. a 5 p.m. de lunes a viernes. Puede comunicarse con Rodrigue llamando al 207-816-1195 o enviando un correo electrónico a rodrigue@ircofmaine.org



Get Involved!

The Brunswick Parks and Recreation Department Recreation Commission consists of five (5) members who are appointed by the Town Council and the Recreation Commission meets on the third Wednesday of the month at 7:00pm. The Recreation Commission has the following general powers and duties:

- The Recreation Commission shall review programs and formulate policies related to public recreation in the Town of Brunswick, including the coordination of its programs with those of other municipal departments.
- It shall be the overall responsibility of the Recreation Commission to promote, enhance and protect recreational opportunities in Brunswick in order to maintain and further develop the quality of life and objectives set forth in the Comprehensive Plan of the Town of Brunswick.
- The Recreation Commission shall be responsible to set forth policies and procedures for all programs operated and administered by the Brunswick Parks and Recreation Department.
- The Recreation Commission shall be responsible for the supervision of all recreational activities conducted by the department on all property owned by or under the control of the town, or on property not owned or under the control of the town.
- The Commission shall communicate with other recreational user groups to coordinate assistance, training, and use of facilities to collectively support extended recreational activities within the Town of Brunswick.
- The Recreation Commission shall develop an appropriate plan of maintenance based on an annual budget and CIP projections for the proper maintenance of the Recreation Department building(s) and for any other recreational structures or facilities placed under its jurisdiction by the Town Council.
- The Recreation Commission will assist in the development of an annual budget.

If the Recreation Commission does not spark your interest, considering one of the other 20+ Boards and Committees on which citizens may serve. More information can be found at our Website:

www.brunswickme.org/277/Boards-Committees

There may be other special committees not listed. Please contact the Town Clerk's office at 207-725-6658 for more information.



SPONSORSHIPS

WE NEED YOUR HELP!

Many of our events and programs rely on financial support from community members and organizations. These contributions keep participation fees low and with lower fees more children can experience the benefits of youth programming!

Please consider making a contribution towards one of our teams, programs or events. It is a unique way to advertise your business or organization and it will have a positive impact on our community!

Tier 1 Sponsorship- \$200 Per selection

- ☐ Spring Soccer
- ☐ Volleyball Club
- ☐ Spring Cross Country Running Club
- ☐ Kids on the Field Baseball
- ☐ Spring Cross Country Trail Biking
- ☐ Summer Baseball Camp
- ☐ Summer Softball Camp
- ☐ Youth Track & Field
- ☐ Boys Summer Basketball
- ☐ Girls Summer Basketball
- ☐ Summer Field Hockey
- ☐ Fall Cross Country Trail Biking
- ☐ Fall Cross Country Running Club
- ☐ Fall Field Hockey
- ☐ Field Hockey Travel Team
- ☐ Fundamental Basketball for Grade K
- ☐ 1st & 2nd Grade "Kids on the Court" Basketball
- ☐ Winter Indoor Track
- ☐ No Preference

Tier 2 Sponsorship- \$250

\$50 per each additional selection

- ☐ BYSL Grades K/1 'Kids on the Pitch'
- ☐ BYSL Grade 2/3 Girls Division
- ☐ BYSL Grade 2/3 Boys Division
- ☐ BYSL Grade 4/5 Girls Division
- ☐ BYSL Grade 4/5 Boys Division
- ☐ BYSL Jr. High Coed Division
- ☐ 3rd & 4th Grade Boys Basketball
- ☐ 3rd & 4th Grade Girls Basketball
- ☐ 5th & 6th Grade Coed Basketball
- ☐ 7th & 8th Grade Coed Basketball
- ☐ High School Coed Basketball

Tier 3 Sponsorship- \$500

- ☐ Summer Day Camp
- ☐ Mid-Winter Classic

Tier 4 Sponsorship- \$1000

- ☐ Valentine Ball
- ☐ Bike Rodeo
- ☐ Halloween

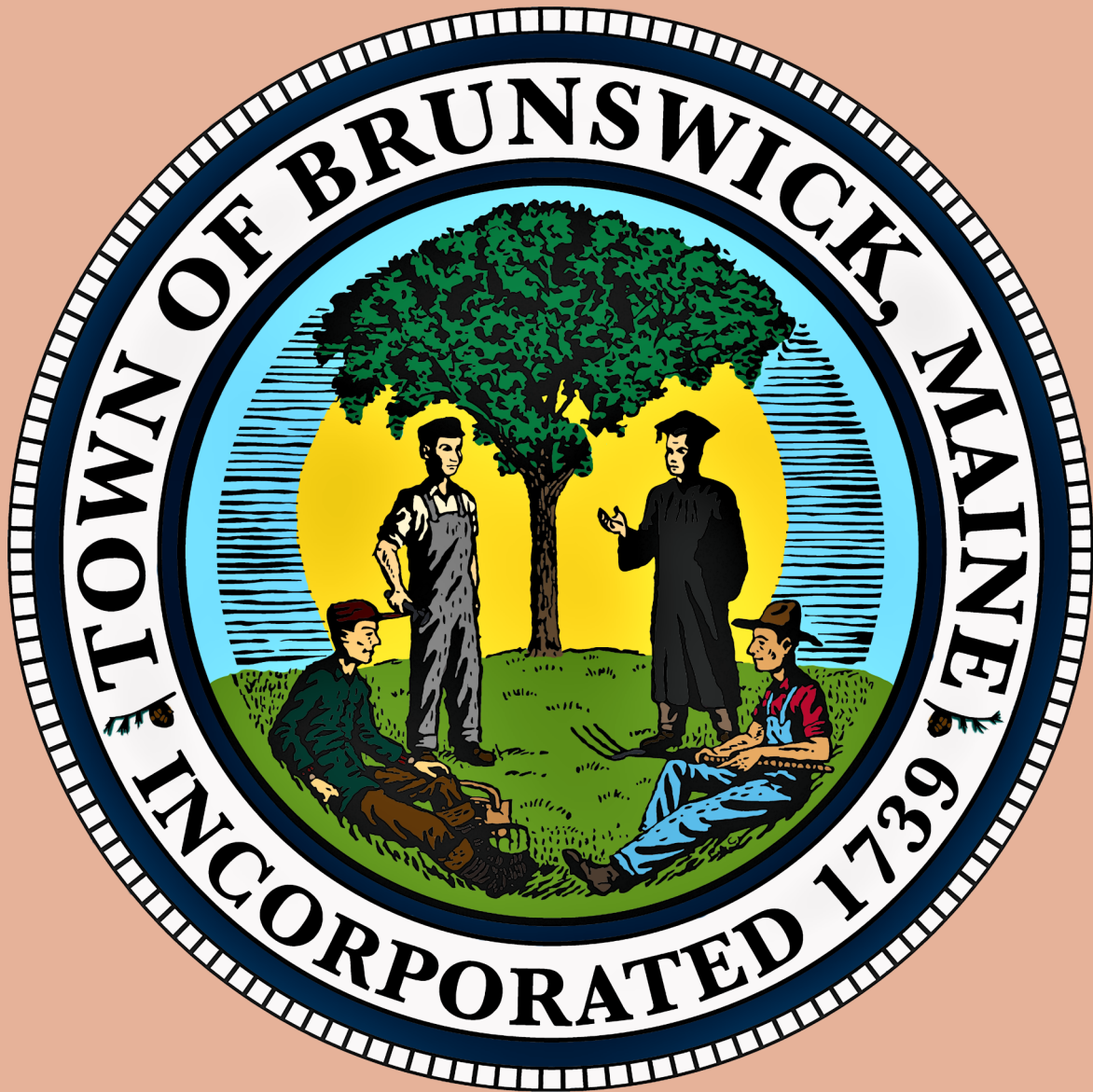
[Click here to view our Current Sponsorship Request](#)

For more information call 725-6656 or email recprograms@brunswickme.org!

Brunswick Parks & Recreation

Spring 2024

Brochure



brunswickme.org/parks-recreation | 207.725-6656
recprograms@brunswickme.org
220 Neptune Drive Brunswick, Maine 04011