

Brunswick Parks & Recreation

SUMMER 2022

Program Brochure



Brunswick
maine

brunswickme.org/parks-recreation | 207.725-6656
recprograms@brunswickme.org
220 Neptune Drive Brunswick, Maine 04011

Table of Contents

Page 3	Message to the Community & Mission Statement	Page 10-20	Youth Programming
Page 4	Online Registration	Page 21-23	Adult Sports
Page 5-6	Policies & Procedures	Page 24-27	Family and Community Events
Page 6-9	Facilities & Rental Info	Page 28	Get Involved
		Page 29	Program Registration Form

Office Hours

Brunswick Recreation Offices are open 8am - 4:30pm, Monday - Friday
The Welcome Center is open by appointment only from 9am-5pm, Monday-Friday
(207) 725-6656

Parks and Recreation Staff

Thomas M. Farrell

Recreation Director

tfarrell@brunswickme.org 207-721-4201

Dennis Wilson

Parks and Facilities Manager

dwilson@brunswickme.org 207-721-4207

Brittany Lucas

Financial Administrative Assistant

blucas@brunswickme.org

David Coffill

Youth and Adult Leagues Director

dcoffill@brunswickme.org

Sabrina M. Best

Deputy Director

sbest@brunswickme.org 207-721-4202

Aaron Cropley

Program Assistant

acropley@brunswickme.org

Madeleine Hicks

Administrative Registrar

mhicks@brunswickme.org

Jonathan Fisk

Summer Day Camp Director

207-725-6656

Welcome Center Staff

Benedita Kakhuba

Housing Assistance Specialist

benedita@ircofmaine.org

Brunswick Parks and Recreation Offices located at:

Brunswick Recreation Center

220 Neptune Drive, Brunswick Maine

Office Hours are Monday - Friday from 8:00am to 4:30pm

(207) 725-6656

A MESSAGE TO OUR COMMUNITY

FROM THE BRUNSWICK PARKS AND RECREATION DEPARTMENT

Welcome to the Brunswick Parks and Recreation Department where we maintain and manage more than 40 parks, facilities and public spaces in our community, and administer approximately 100 recreation programs and events annually.

We are excited to share with the community all the fun and exciting programs we have lined up this Summer! Our staff has done a great job at bringing back some old favorites while maintaining new ones created throughout the past year. Our goal is to provide a variety of programs and events for all ages!

As you browse through this Brochure, please keep in mind that **all our facilities, programs, and policies are subject to change as a result of COVID-19 and Maine CDC guidelines**. Many of the programs listed here are already open for registration, so please give us a call or log onto your RecTrac account for info & updates.



What to know when visit our Facilities

- **Do not come to an Brunswick Recreation facility if you feel sick or have had any symptoms of COVID-19 in the past 48 hours.**
- Be respectful of those that would like to continue to maintain at least 6' of physical distance from others and/or wear a face covering.
- Hand sanitizer will be available throughout the building.
- Always try to bring your own water bottle, a bottle filling station is available.
- A list of symptoms is available on the Maine CDC website and is posted throughout our facilities.

We understand and respect that not everyone will be comfortable participating in programs, and we will continue to work with you to manage refund requests. As always, we encourage participants to check with a medical professional before engaging in any recreation programming.

Thank you for your patience, vigilance, support and positive feedback. See you soon!

ONLINE REGISTRATION

For Existing Brunswick Parks & Recreation Families (2011- Present)

If any member of your family's household has registered for a program with us after 2011 you already have an active household account! If you have never taken advantage of the WebTrac Online Registration platform, however, you do not have login credentials attached to your account yet.

Please do not create a new household in order to login! Call us at 207-725-6656 or email recprograms@brunswickme.org and we will assist you with assigning login information to your already existing household account.

If you are not sure whether your login credentials have been set up or if you have forgotten your username or password, please reach out to us using the contact information provided above and we will assist you with this as well!

Please Note: If you don't contact us and you choose to register a new account, you will be creating a duplicate household in our system. You will also be considered a Non-Resident until verified through our office and charged Non-Resident enrollment fees.

For NEW Brunswick Parks & Recreation Families That Have Never Registered for a Program

If you have never signed up for a program with us in the past you can create an account by going to our [WebTrac](#) Online Registration page and selecting the need a new account link. You will then be prompted to start an account. Your account will be active once complete, however you will be recognized as a Non-Resident by default.

You will need to visit the Recreation Center during business hours (Monday through Friday, 8 a.m. to 4:30p.m) to verify residency in order to be charged resident fees. We will accept a current utility statement, Town of Brunswick tax statement, or current driver's license as proof of residency. Documents can also be scanned and sent via [email to Parks and Recreation](#) at Recprograms@brunswickme.org.



General Policies

Registration: Registration can occur either in person at the Recreation Department, over the phone, by mail OR online at www.brunswickme.org/parks-recreation

Registration Process: Pre-registration and pre-payment are required for all classes. Programs registrations are accepted in person, mail, online, or over the phone. Payment is expected prior to the start of the first class date.

Payment: Full payment is required at the time of registration for classes.

Residents: Participants who live in Brunswick. Verification of Brunswick address is required.

Non-Residents: Participants who do not live in Brunswick must pay 1.33% more per class registration.

Confirmations: We do not send course confirmations or reminders of enrollment. If you register for a program, you are responsible for knowing class dates, times, and location.

Discounts: Brunswick Parks and Recreation does NOT offer a senior discount. Sibling discounts are available for Brunswick Youth Soccer League and for Summer Vacation Camp.

Refund Policy: The Brunswick Parks and Recreation Department seeks to provide high quality facilities and program opportunities for leisure time activities for all Brunswick residents. The user fees that are collected through these programs go directly toward the cost of operation. This allows us to keep our rates fair and reasonable while still delivering a high quality product. In many cases, expenses are incurred prior to the start of a program, which is why we have outlined the refund policy below.

- ⇒ If we cancel a program, all fees will be refunded. If a program does not take place due to cancellation by the Parks and Recreation Department, all registration/user fees will be refunded in full.
- ⇒ If you withdraw 2 business days before the first session of a program (excluding weekends and holidays) you will receive a full refund (less a \$5 handling fee). Example: If a program is scheduled to begin on a Wednesday, to receive a full refund (minus the handling fee) you must withdraw before the end of business on Monday. If Monday is a town recognized holiday and our offices are closed then withdrawal must take place before the end of business on the previous Friday.
- ⇒ If you withdraw less than 2 business days prior to the start of or after the first session of a program, you will be refunded 75% of the registration fee (less a \$5 handling fee). Example: If the program is scheduled for Wednesday afternoons, any withdrawals that take place at the start of business on the Tuesday morning before the first session through the close of business on the Tuesday prior to the second session will be eligible for this refund.
- ⇒ If you withdraw on (or after) the day of the second session, no refund will be issued.
- ⇒ For one-day special events you must withdraw no less than 2 business days prior to the start of the program to receive a full refund (less a \$5 handling fee). There will be no refunds issued for requests later than that.
- ⇒ In the event of an extended illness or injury, we will issue a prorated refund after the start of a program. We must receive written notification, along with a physicians note excusing the participant from continuing. All documentation must be received before the last session of the program.
- ⇒ Refund processing takes up to two weeks. We do not provide cash refunds.

Like us on Facebook



Parks and Recreation Department Facilities

Here you will find information for the parks and facilities available in the Town of Brunswick. For more information on any facility, contact the Parks and Recreation Department at 207-725-6656 during business hours. You may also download the complete Parks and Recreation A to Z listing (PDF) from our website for more detailed descriptions.

Athletic Fields

Bicycle Path Field–*Soccer*
Crimmins Field–*Soccer, Football, Lacrosse*
Edwards Field–*Baseball/Softball, Basketball, Soccer*
Lishness Park–*Baseball/Softball, Soccer*
Shulman Park–*Soccer, Lacrosse*
Stowe Field–*Football, Soccer*
Wildwood Field–*Soccer*

Boat Launches

Barnes Landing
Bay Bridge Landing Wetland Park
Maquoit Landing (Wharton's Point Landing)
Mere Point Boat Launch
Mill Street Canoe Portage
Pejepscot Dam Recreation Area
Princes Point Landing
Sawyer Park
Simpson's Point Landing
Water Street Boat Landings

Community Gardens

Senior Garden
Tree Nursery



Dog Parks

Merrymeeting Dog Park

Ice Rinks

Coffin Pond Ice Skating Rink
Lishness Hockey Rink
Mall Ice Skating Rink

Gateways & Beautification

250th Anniversary Park
Cooks Corner Gateway
Maine Street Flowers
Mill Street Lot
Pleasant Street Gateway

Indoor Facilities & Gymnasiums

Recreation Center
Stowe Gymnasium

Dennis Wilson serves as the Town's Parks and Facility Manager and Licensed Arborist.

Please contact him with questions or concerns regarding tree or facilities.

Phone: 725-4207

Email: dwilson@brunswickme.org

Parks and Recreation Department Facilities

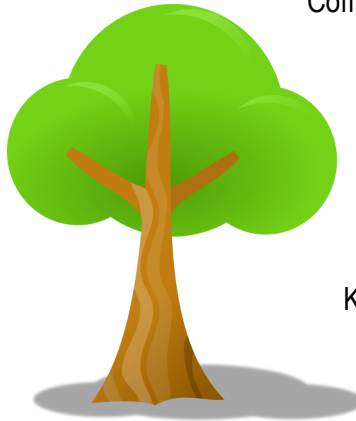
Here you will find information for the parks and facilities available in the Town of Brunswick. For more information on any facility, contact the Parks and Recreation Department at 207-725-6656 during business hours. You may also download the complete Parks and Recreation A to Z listing (PDF) from our website for more detailed descriptions.

Playgrounds

Coffin Pond Recreation Area
Edwards Field
Hambleton Avenue Playground
Longfellow Playground
Nathaniel Davis Park

Trails

Androscoggin River Bicycle Path
Bay Bridge Landing Wetland Park
Coffin's Ice Pond
Coffin Pond Recreation Area
Cox Pinnacle
Greater Commons
Lishness Park
Maquoit Bay Conservation Land
Pejepscot Dam Recreation Area
Sawyer Park
Town Commons



Parks & Natural Areas

250th Anniversary Park
Androscoggin River Bicycle Path
Bay Bridge Landing Wetland Park
Captain William A. Fitzgerald U.S.N.
Recreation and Conservation Area
Chamberlain Avenue Esplanade
Coffin Pond Recreation Area
Coffin's Ice Pond
Cox Pinnacle
Great Island Chain
Greater Commons
Kate Furbish Preserve
Lamb Park
Lower Mall
Maine Street Station Park
Maquoit Bay Conservation Land
Mill Street Canoe Portage
Nathaniel Davis Park
Pejepscot Dam Recreation Area
Pinette's Landing
Sawyer Park
Spring and McKeen Lot
Swinging Bridge Park
Town Commons
Upper Mall

For more information about a particular park,
including directions and trail maps,
please call 725-6656 or visit
<https://www.brunswickme.org/206/Parks-Facilities>

Brunswick Recreation Center

Open Gym

The Brunswick Recreation Center offers multiple time slots throughout the week for individuals or families to stop by and use the gym space. This service is free to the public and we offer some basic equipment such as pickleball nets and basketballs. If you would like to use the space for other activities please check with staff first.

Open Use = Any age use

Family Open Use = Use by families (adult(s) & children family members)

K-12 Open Use = Use for grades K-12 (children 12 and under require adult supervision)

High School Use = Use for grades 9-12

Adult Open Use = Adults 18+

Dates: This schedule varies from week to week and can be found on our website www.brunswickme.org or give us a call.

Location: Brunswick Rec Center – Court 1 and 2

Cost: Free

Walking Track

The Brunswick Recreation Center offers a 2 lane, one way direction, walking/running indoor track. The public is welcome to stop by anytime the facility is open (unless closed due to spectators or programming).

- ◆ The Track Use Is Limited to Walking and Running Only: Rollerblading, roller skating, bicycling, skateboarding and strollers are not allowed.
- ◆ Amplified Music Policy: Please respect other guests by using headphones. No broadcast music or speakerphone use is allowed. (This restriction does not pertain to programs run by the parks and recreation department that require music).
- ◆ Please Use Non-Marking Shoes Only.

Dates: This schedule varies from week to week and can be found on our website www.brunswickme.org or give us a call.

Location: Brunswick Rec Center

Cost: Free

For more info about Open Gym or the Walking Track Please email recprograms@brunswickme.org
call 725-6656, or visit our website: brunswickme.org/parks-recreation



Brunswick Recreation Center

Amenities

- ◆ Lobby with ample seating and storage for outer-wear and outdoor shoes
- ◆ Indoor Track
- ◆ Distance: 1/9 of a mile
- ◆ Two Basketball Courts
- ◆ Open-Use Fitness Area
- ◆ Full Locker rooms complete with bathroom facilities and showers
- ◆ Indoor Pickleball Courts
- ◆ Beverage and Snack Vending Machines
- ◆ Access to informational pamphlets and maps of Brunswick's outdoor spaces
- ◆ Abundant parking for those looking to access Recreation Center or area trails

Reminders

- ◆ No roller blades, roller skates, strollers, skateboards, allowed on track
- ◆ Wheeled walking aids, canes and wheel chairs are permitted
- ◆ Indoor shoes with non-marking soles required
- ◆ No amplified music played through speakers allowed
- ◆ Please use cubbies and hooks in lobby to store personal items or store in locker room
- ◆ Recreation Department is not responsible for items lost or stolen—Please lock up valuables
- ◆ Locks are available for your purchase in Recreation Center Office



Keep an eye out for our **Fall 2022 Programming Brochure** slated to be released on August 1, 2022!

NEW Programs and Amenities Coming in Fall of 2022

Fitness Center

All-day Child Care Program

Stay Tuned for More Information to Come!

Midcoast Athletic & Recreation Complex (MARC)

Creating a state-of-the-art regional hub for wellness, sports, and play at Brunswick Landing

The Midcoast Athletic & Recreation Complex (MARC) project grew out of a grassroots group of Brunswick residents passionate about sports and recreation. We noticed that our community lacked certain recreation facilities that we've seen benefit other small towns across the state and nation.

In 2020, the U.S. Navy conveyed a 10-acre parcel on Brunswick Landing to the Town of Brunswick for specifically for recreation purposes. An advisory committee was launched in summer 2021 with the mission to dream big and create a plan to bring more sports, athletic, and recreation opportunities to kids, adults, seniors, and families in the Region.



**Phase 1 Plan—
Outdoor Facilities**



**Master Plan—
Indoor Facilities**



**Master Plan—
Outdoor Facilities**

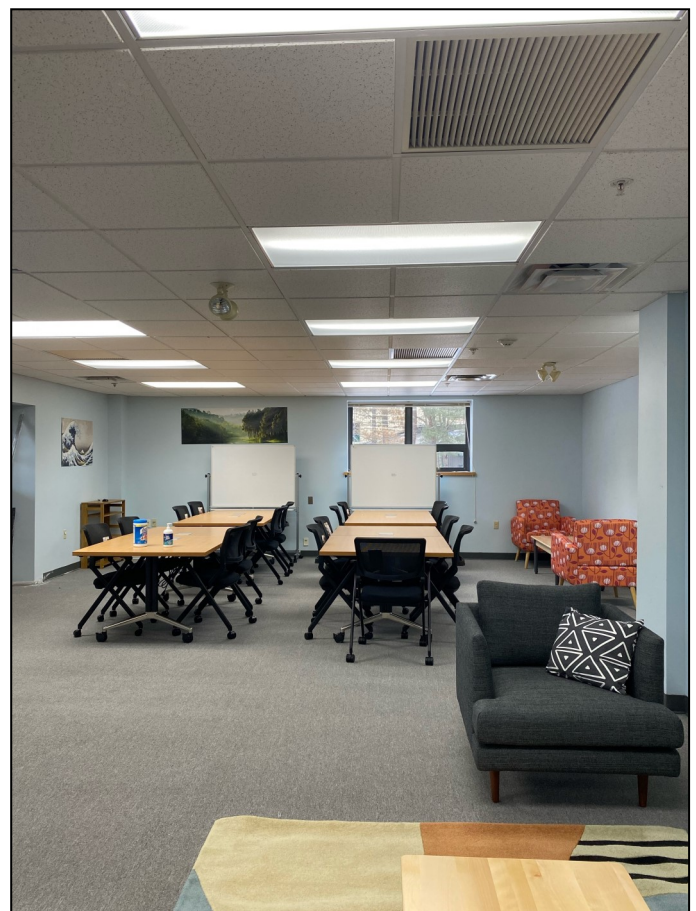
Visit <https://www.marcproject.org/> or scan the QR Code for more info!



Welcome Center

Community Room at the Welcome Center

The Welcome Center serves as a centralized resource for immigrants arriving in Brunswick. It provides a space for individuals accessing legal, workforce, and English language learning services and provides a hub for socializing, internet use, and childcare, among other resources. The Welcome Center is located in the back of the Brunswick Recreation Center at the Brunswick Landing. The entrance and parking lot can be found off Venture Ave.



The Community Room is staffed by Benedita Kakhuba, courtesy of the Immigrant Resource Center of Maine.

It is open by appointment only from 9am-5pm Monday thru Friday.

You may contact Benedita by calling 207-530-3634 or by emailing benedita@ircofmaine.org

Youth Sports Programming

Dragons Summer Basketball Camp for Girls

This week long basketball camp for girls entering grades 3-8 this fall will focus on skill development & learning the fundamentals of the sport through fun drills and games. Please bring a water bottle and sneakers. NEW this year, participants will receive a reversible Jersey.

Ages: Grades 3 to 8 in the Fall 2022

Dates: Monday-Thursday, July 18th– 21st

Time: 9:00am-11:30am

Location: Brunswick High School Gym.

Fee: \$55 Residents / \$73 Non-Residents

Instructor: Sam Farrell, Girls High School Varsity Basketball

Coordinator: Aaron Cropley, acropley@brunswickme.org



Dragons Tri-Sport Camp for Boys

Join Brunswick High School Basketball Coach Ben Clark, High School Baseball Coach Mike McCaffrey & Bowdoin College Men's Soccer Coach Scott Weircinski for our Tri-Sport Basketball-Baseball-Soccer Camp! Each day athletes will have almost 2 hour session of instruction in each of the three sports with time built into the schedule for lunch and breaks. Each session will focus on fundamental skill development with emphasis placed upon safety and fun! Please bring a water bottle, snacks, lunch and sport specific equipment (sneakers, glove, shin guards etc). NEW this year, participants will receive a reversible Jersey.



Ages: Grades 3 to 9 in the Fall 2022

Dates: Monday– Friday, July 11th-15th

Time: 9:00am-4:30pm

Location: Brunswick High School

Fee: \$150 Residents / \$200 Non-Residents

Instructors: Ben Clark, Mike McCaffrey and Scott Weircinski

Coordinator: Aaron Cropley, acropley@brunswickme.org

Youth Sports Programming

Kids on the Field Instructional Baseball/ Softball

Kids will work on throwing, catching, running the bases, playing defense and batting. Time will be spent learning various positions and terms of the sport. Kids will play controlled games during the final session(s) of the program. The games provide a safe, positive learning experience for all players. Players should bring their own glove, bat & helmet, but please let us know below if need to borrow equipment! Participants will receive a shirt.

Ages: Grades K-2 as of Fall 2021

Dates: Wednesdays, May 25th – June 22nd

Time: Grade K From 5:30pm – 6:30pm
Grades 1-2 From 5:45-6:45pm

Location: Edwards Field

Fee: \$30 Brunswick Residents Only*

Instructor: Jason Higginbottom

Coordinator: Aaron Copley, acopley@brunswickme.org

Edge Summer Baseball Camp

The clinic will be run by Edge Academy, which is unmatched in the state of Maine. Come and join us for a fun-filled week and improve your game! Emphasis will be placed on fundamental skill development through practice and game simulation in a fun and safe environment. Please bring a glove, wear cleats and bring clothes for warm or cool conditions. Participants will receive a shirt.

Ages: 7-12 as of the start of camp

Dates: Monday– Thursday, June 27th-30th

Time: Full Day Option from 9:00am-4:00pm
Half Day Option from 9:00am-12:00pm or 1:00-4:00pm

Location: Lishness Field

Fee: Brunswick Residents—\$140 Half Day/\$180 Full Day
Non-Residents— \$210 Half Day/\$275 Full Day

Instructors: Edge Academy Coaches

Coordinator: Aaron Copley, acopley@brunswickme.org



**ONLINE PROGRAM REGISTRATION IS AVAILABLE AT
BRUNSWICKME.ORG**

Or stop by our office located at
220 Neptune Drive, Brunswick Maine
Office Hours: Monday - Friday from 8:00am to 4:30pm

Youth Sports Programming

Youth Softball Camp

This program is designed to introduce the fundamentals of the sport of softball. Attention will be given to all skill levels and all areas of play will be stressed. Practice drills and game situations are designed to apply skills as well as provide girls with a fun opportunity to enjoy the game of Softball! Participants will receive a shirt.

Ages: 6-13 year old

Dates: Monday– Friday, July 11th-15th

Time: Ages 6-9 meet from 8:30am-10:00am

Ages 10-13 meet from 10:15am-12:15pm

Location: Brunswick High School Field

Fee: Ages 6-9—\$53 Residents/\$70 Non-Residents

Ages 10-13—\$70 Residents/\$93 Non-Residents

Instructor: Hugh Dwyer, BHS Varsity Softball Coach

Coordinator: Aaron Cropley, acropley@brunswickme.org



Summer Field Hockey Clinic

This clinic is a can't-miss for any field hockey enthusiast and is a great program for introductory players as well! The program provides an introduction to the sport for those who have never played, as well as skill enhancement for those who have or want to warm up before the season. Players will focus on basic skill development through a series of fun games that help players become comfortable with a stick in the field, as well as focusing on mastering fundamental skills & game situation scrimmaging. Participants will receive a reversible jersey.

Please bring: shin guards, mouth guard, water bottle, and sneakers. * Field Hockey Sticks are provided for those without their own.

Ages: Grades K-8 in the Fall 2022

Dates: Monday– Thursday, August 1st-4th

Time: Grades K-2 meet from 9am-10am

Grades 3-8 meet from 9am-12pm

Location: Brunswick Junior High School Field

Fee: Grades K-2 \$45 Residents/\$60 Non-Residents

Grades 3-8 \$55 Residents /\$73 Non-Residents

Instructor: Coach Karin Paquin, BHS Varsity Coach

Coordinator: Aaron Cropley, acropley@brunswickme.org



Youth Sports Programming

Top Rockers Youth Hip Hop Dance Camp

Students will learn various styles of hip hop and choreography. Instruction in the fundamentals and vocabulary of hip-hop will help to round out the week. Techniques include; popping, locking, waving, isolation, breaking and tumbling. We will finish out the day with dance games and other fun activities. An outdoor demonstration on Friday, July 29th will complete this high energy week. This program is a beginner level dance program, but is open to dancers of all levels! Any friends and family are welcome to attend the final demonstration on July 29th and should plan to arrive at 4:30pm!

Ages: 8-12 year old

Dates: Monday– Friday, July 26th– July 29th

Time: 1:30pm-4:30pm

Location: Brunswick Recreation Center

Fee: \$140 Residents / \$186 Non-Residents

Instructor: Kate Andreu

Coordinator: Aaron Cropley,
acropley@brunswickme.org

Teen Intensive Dance Camp

Students will receive instruction in jazz, hip hop and contemporary dance styles. The day will begin with high energy warm ups in both jazz and ballet techniques. Each day will have a slightly different schedule, depending on which genre we are working on that day. We will be building 3-4 pieces throughout the week, in preparation for a showcase on Friday, August 5th. Each piece will demonstrate a different style of dance. This is a high energy camp with an incredible amount of room for dancers to learn, grow and develop the essential techniques it will take to become a truly skilled dancer. This camp is open to all dance levels! All friends and family are welcome to attend the final demonstration and should plan to arrive at 3:30pm on Friday, August 5th!

Ages: 13-18 year old

Dates: Monday-Friday, August 1st-August 5th

Time: 1:00pm-4:30pm

Location: Brunswick Recreation Center

Fee: \$140 Residents / \$186 Non-Residents

Instructor: Kate Andreu

Coordinator: Aaron Cropley,
acropley@brunswickme.org

About the Instructor

Kate Andreu has been in the performing arts industry for 20 years working on numerous performance and production projects all over the state. Kate choreographed Dance at USM for 5 years in a row and has been asked back by Professor Maria Tzianabos to guest teach in the USM dance program. She is a former dance studio owner and currently works as a professional choreographer and consultant. She has successfully designed and implemented dance enrichment programs, master classes and workshops in Portland, Freeport, and greater Midcoast areas. Kate is a well-known performing arts professional with an energy level to match. She looks forward to engaging with her students and helping them find a love of dance and performance!

**ONLINE PROGRAM REGISTRATION IS AVAILABLE AT
BRUNSWICKME.ORG**

Or stop by our office located at
220 Neptune Drive, Brunswick Maine
Office Hours: Monday - Friday from 8:00am to 4:30pm

Youth Sports Programming

Golf for Kids

These classes include instruction in Grip, Stance, Full Swing Techniques, Chipping and Putting. Skills are taught through targeted instruction, games and contests with prizes. Classes will be taught at the Brunswick Golf Club. The Brunswick Golf Course is a premier golf course that offers an outstanding teaching facility which includes a driving range, chipping area, pitching area, putting green, and sand play.



Participants are encouraged to bring their own golf clubs, but there will be some clubs available to use for the program if needed. Please provide advanced notice if you will need to borrow clubs!

Ages: 8-16 year old

Dates: Thursdays, June 30th-July 21st

Time: 10:00am-10:45am

Location: Brunswick Golf Club

Fee: \$76 Residents/ \$102 Non-Residents

Instructor: Golf Coach Gerry Caron

Coordinator: Aaron Cropley, acropley@brunswickme.org

Maineix Lacrosse Camp

This mini-camp offers a developmentally appropriate lacrosse curriculum designed to help players of all different skill levels the chance to learn, enhance, or refine their game! Maineix Lacrosse is a premier lacrosse club in Maine that offers programs for K-12th graders. Participants will receive a shirt.

Equipment Needed:

Boys: Helmet, shoulder pads, arm pads, gloves, stick, mouth guard, and appropriate footwear.

Girls: Goggles, stick, mouth guard, appropriate footwear

Ages: Grades 3-8 in Fall 2022

Dates: Monday-Thursday, June 27th-June 30th

From 9:30am-12pm

Location: Crimmins Field

Fee: \$125 Residents/ \$165 Non-Residents

Instructor: Maineix Lacrosse Coaches

Coordinator: Aaron Cropley, acropley@brunswickme.org

**ONLINE PROGRAM REGISTRATION IS AVAILABLE AT
BRUNSWICKME.ORG**

Or stop by our office located at
220 Neptune Drive, Brunswick Maine
Office Hours: Monday - Friday from 8:00am to 4:30pm

Youth Sports Programming

Seacoast Soccer Camp

Each day begins with a fun "camp warm-up" which gets everyone loose and lots of touches on the ball. The players are then split up into age-appropriate groups and matched up with a coach for the week. As a group they play fun games and exercises which promote confidence with the ball. Each day ends with scrimmage play which may be different from day to day but encourages every player to be involved as much as possible. All campers receive a Nike soccer ball and Nike t-shirt. Rain date of August 19th will be held in the event of inclement weather.

Ages: 4-14 year old as of October 15, 2022

Dates: Monday– Thursday, August 15th-18th

Time: Ages 4-6 meet from 9am-10:30am

Ages 7-14 meet from 9am-12pm

Location: Edwards Field

Fee: Ages 4 -6: \$105 Residents / \$140 Non-Residents

Ages 7-14: \$140 Residents / \$186 Non-Residents

Instructor: Seacoast United Coaches

Coordinator: Aaron Copley, acopley@brunswickme.org



Kids Kayaking and Stand– Up Paddle Boarding Camp

Spend the week paddling and having fun with Seaspray Kayaking Instructors and Guides at Thomas Point Beach in Brunswick! Participants will have the chance to play a variety of games and learn rescue and navigation skills while paddling kayaks, paddleboards and canoes. We will explore the local islands, make arts and crafts, try kayak sailing and kayak fishing, as well as participate in cooperative challenges throughout the week. Parents are invited to attend a short meeting on the first day and may remain onsite at Thomas Point Beach to observe how camp is run! Participants should be prepared for a change in weather conditions and bring a snack and drink each day. Drop off and pick up locations may change depending on tide and if a change in the schedule is made, all participants will be notified by phone.

Suggested Items to Bring: Bathing Suit, Nylon Shorts, Towel, Sunglasses, Glasses Strap, Sunblock, Hat, Wind-breaker/Fleece/Rain Jacket, Water Shoes/Sandals/Old sneakers, Water Bottle, Snacks. Optional: Water Proof Camera/Own Kayak/Lifejacket/Wetsuit

Ages: 8-17 year old

Dates: Monday-Friday, June 27th - July 1st

Time: 9:00am-12:00pm OR from 1:00pm-4:00pm

Location: Thomas Point Beach

Fee: \$250 Residents / \$332 Non-Residents

Instructor: Seaspray Kayaking Instructors and Guides

Coordinator: Aaron Copley, acopley@brunswickme.org

Youth Enrichment Programming

Mad Science Robot Recruit Summer Camp

Join Mad Science for a week of discovery and fun in this five-day Robotics Camp! Investigate robotic fundamentals with curious robots, learn about the history and current field of robotics, explore robot design potential by using robots that have big personalities, and build ingenious robots to take home. Compare, analyze, and test a variety of robots everyday that are correlated to the daily concepts. We will explore circuits, electricity, sensors, gears, and advanced robotic applications. Learn about the mechanical aspects of robots with gears, gear ratios, and torque. Pick up the basics of electricity by snapping together circuits to make a remote-control rover robot. Experiment with sound sensing robots, line-tracking robots, industrial robots, app-controlled performance bots, robotic pets, the world's smartest and smallest robot, and so much more!



Our future roboticist round out the week getting more in depth experience programming robots as they cycle through programming stations that will enrich their understanding of programming. We welcome all children to become creative camper's that will design tomorrow's robots today! Day 1 – Ready for Robots, Day 2 – Circuit Science, Day 3 – Robots 101, Day 4 – Use Your Common Sensors!, Day 5 – Advanced Robotics.

Ages: Grades 1-6 in Fall 2022

Dates: Monday– Friday, June 20th– July 24th

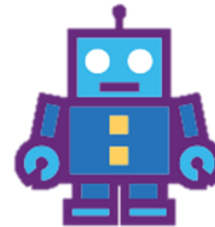
Time: 9:00am-3:00pm

Location: Harriet Beecher Stowe School

Fee: \$325 Residents / \$425 Non-Residents

Instructor: Mad Science Instructors

Coordinator: Aaron Cropley, acropley@brunswickme.org



ONLINE PROGRAM REGISTRATION IS AVAILABLE AT www.brunswickme.org

Or stop by our office located at
220 Neptune Drive, Brunswick Maine
Office Hours: Monday - Friday from 8:00am to 4:30pm

Like us on Facebook: "Brunswick Parks and Recreation"

Youth Enrichment Programming

Mad Science Brixology Summer Camp

Get ready for the Bridges, Bricks, Blast-Off Brigade! Campers step into the shoes of engineers in this Mad Science FUN'gineered camp full of rockets, wacky machines, flying devices, roller coasters, and BRICKS! Children will be challenged to use LEGO® bricks to assemble a space station and a mechanized drawing machine. They will also use their creativity to solve real-world design challenges like building a sailboat slalom and off-world habitat. Children build and take-home projects like micro-pincher's, a wooden cube puzzle, balloon car, and flying fizzler rockets. Brixology take-homes are the Wave Rider Boat and Skyroller Zipline cable car which are compatible with campers LEGO® bricks at home. Come give your future engineer the opportunity to have a blast exploring all the wonders the world of engineering holds! Day 1 – Super Structures, Day 2 – Machine Mania, Day 3 – Water Works, Day 4 – Newton's Loco-Motion, Day 5 – Rockin' Rockets.

Ages: Grades 1-6 in Fall 2022

Dates: Monday– Friday, July 25th– July 29th

Time: 9:00am-3:00pm

Location: Harriet Beecher Stowe School

Fee: \$299 Residents / \$398 Non-Residents

Instructor: Mad Science Instructors

Coordinator: Aaron Cropley, acropley@brunswickme.org



Mad Science Reactions in Action Summer Camp

Shake up a flask of fun in the lab as a Junior Chemist! Try your hands as a real Mad Scientist in this whirlwind camp packed solid with cool reactions. Explore Bubbling potions, slimy polymers, color-changing liquids, dry ice bubbles, and solids that disappear in an instant! Start out the week learning about laboratory equipment at your personal lab bench. Then, slide down the PH scale and spend a day finding out how different chemicals react when mixed together. Take home a full set of Mad Science lab gear that includes a graduated cylinder, a flask, goggles, and a lab coat. Come take a walk on the wild side with us as we explore how radical chemistry can be! Day 1 – Super Cool Science, Day 2 – Chemistry Club, Day 3 – Reaction Time, Day 4 – Chemical Combo, Day 5 – Crazy Concoctions.

Ages: Grades 1-6 in Fall 2022

Dates: Monday– Friday, August 8th– August 12th

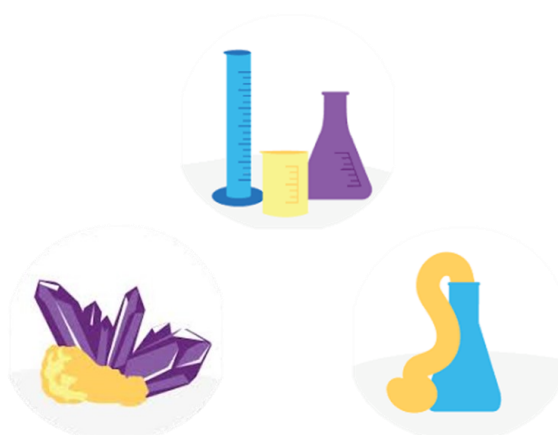
Time: 9:00am-3:00pm

Location: Harriet Beecher Stowe School

Fee: \$299 Residents / \$398 Non-Residents

Instructor: Mad Science Instructors

Coordinator: Aaron Cropley, acropley@brunswickme.org



Youth Enrichment Programming

Brick by Brick LEGO

Grab a machete and help forge the path to the ancient plane wreck. Can you dodge the crocodile waiting at the river's edge? Also, be certain to stay on the lookout for the leopard guarding the hidden gems! What else will the jungle exploration site reveal? Join us to find out! Camp participants will stay focused with educational stories, Lego builds, games and challenges which promote collaboration, critical thinking and fun!

Daily sessions always include time for creative free-building too. Additionally, we will spend time outside every day, weather permitting. Campers should bring lunch, morning/afternoon snack and sunscreen everyday.

Ages: Grades K-5 (must be 5 years old) in Fall 2022

Dates: Monday– Friday, June 27th–July 1st

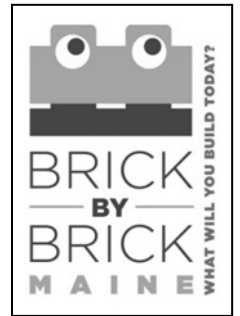
Time: 9:00am–3:00pm

Location: Harriet Beecher Stowe School Library

Fee: \$288 Residents / \$383 Non-Residents

Instructor: Brick By Brick Instructor

Coordinator: Aaron Cropley, acropley@brunswickme.org



Maine Robotics LEGO Robotics Camp

The Brunswick Parks and Recreation Department, alongside Maine Robotics of the University of Southern Maine, is looking for STEM enthusiasts to join in a Robotics Camp this summer! Campers will learn about engineering and programming using the LEGO MindStorms Robotics Kit. This camp is for any level of LEGO Roboteer so it does not matter if you are a rookie or a veteran; this camp can take you and help move your skills forward! Camp starts with some basics and staff will work quickly to assess campers' knowledge and skill sets before breaking up into smaller groups!

Ages: 9-12 year old

Dates: Monday– Friday, July 25th– July 29th

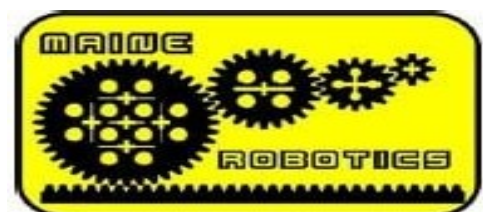
Time: 9:00am–3:30pm

Location: Kate Furbish School Art Room

Fee: \$350 Residents / \$465 Non-Residents

Instructor: USM Maine Robotics Staff

Coordinator: Aaron Cropley, acropley@brunswickme.org



To view frequently asked questions about this camp please visit:
<https://camps.mainerobotics.org/2022-camp-faq.html>

Youth Enrichment Programming

Studio Art Camp

Bring your ideas and creative energy while you spend 5 days in our art studio learning new skills and making art! Campers may pick an art concentration for the week from ceramics, sculpture, fiber arts, drawing and painting or they may sample from a variety of art disciplines. Art supplies will be provided. Campers should plan on bringing lunch and a snack.

Ages: Grades 6-9 in Fall 2022

Dates: Tuesday-Friday, June 27th - July 1st

Time: 9:30am-2:30pm

Location: Harriet Beecher Stowe School

Fee: \$210 Residents / \$279 Non-Residents

Instructed by Brunswick Art Teachers: Kari McCarthy, Cory Bucknam and Bonnie Gilman

Coordinator: Aaron Cropley, acropley@brunswickme.org

Art Smart Summer Camps

Do you love art? If so, this is the camp for you! Brunswick School Art Teachers, Kari McCarthy, Cory Bucknam and Bonnie Gilman, will guide children entering grades 1-5 through a variety of different art projects including drawing, painting, clay and sculpture projects. Campers will get the opportunity to work with a variety of different art mediums in a fun and creative atmosphere. All art materials are provided, but be sure to bring your own snack! Children entering grades 1&2 and children entering grades 3-5 will be grouped together in separate classrooms. There is a limit of 14 children per grade-level grouping in each session offered!



Ages: Grades 1-5 in Fall 2022

Dates: Tuesday-Friday, July 5th - July 8th From 9:30-12:00pm OR

Monday-Friday, July 11th – July 15th from 9:30am - 11:30am (please only sign up for 1 session)

Location: Harriet Beecher Stowe School

Fee: \$100 Residents / \$133 Non-Residents

Instructed by Brunswick Art Teachers: Kari McCarthy, Cory Bucknam and Bonnie Gilman

Coordinator: Aaron Cropley, acropley@brunswickme.org

**ONLINE PROGRAM REGISTRATION IS AVAILABLE AT
BRUNSWICKME.ORG**

Or stop by our office located at
220 Neptune Drive, Brunswick Maine
Office Hours: Monday - Friday from 8:00am to 4:30pm

Youth Child Care

Summer Day Camp

Our Summer Vacation Day camp is held At Harriet Beecher Stowe School and Kate Furbish Elementary School. This program includes two different, age appropriate groupings: Junior Camper Division - Entering Grade 1-2 and Senior Camper Division - Entering Grade 3-6 (Grade as of fall of 2022). Junior Campers will attend camp at Kate Furbish School and Senior Campers will attend camp at Harriet Beecher Stowe School. Children will engage in a variety of activities including arts and crafts, sports and field games, and in addition to weekly field trips and camp visitors! New this year-- Register by the week, Before and After Care included in price!

Summer Camp Highlights

Camp Shirt Included, First Aid/CPR/AED trained and certified staff, Low Camper to Staff Ratios, Daily Activities and Craft Projects, Themed weeks , Special event days, Use of School facilities for rainy days & breaks from weather, Bus trips and swimming days*

*Field Trips and swimming days are dependent upon availability of bus transportation

Ages: For Brunswick Youth Entering Grades 1-6

Dates: Monday– Friday, June 20th-August 11th

Session I: June 20th - July 14th (No July 4th Program)

Session II: July 18h - August 11th

Time: 7:30am-5:30pm with active programming 9am-4pm

Grades 1-2 Meet at Kate Furbish Elementary School

Grades 3-6 Meet at Harriet Beecher Stowe School



Fees:

8 Week Enrollment: \$1000.00 Residents/ \$1330 Non-Residents

4 week Enrollment: \$550.00 Residents/ \$732 Non-Residents

1 Week Enrollment (5 day): \$185.00 Residents/ \$246.00 Non-Residents

1 Week Enrollment (4 day): \$150.00 Residents/ \$200.00 Non-Residents

There is a \$15 Sibling discount for each additional child registered. Discount not available online!



Mid Coast Hunger Prevention Program (MCHPP) will once again offer a Summer Feeding Program for those children who qualify for free or reduced lunch during the school year. This would provide a daily snack & lunch option for children who meet certain eligibility requirements.

Instructor: Jonathan Fisk

Coordinator: Sabrina Best, sbest@brunswickme.org

Youth Child Care

Huskies Teen Adventure Day Camp

Teen Adventure Day Camp is an excursion-based summer enrichment program for Brunswick youth entering grades 7 & 8. At Teen Adventure Camp, adolescents can leave the stresses of school behind as they are challenged to grow and gain confidence. "Home base" for camp will be at Brunswick Junior High School. Each day campers will spend their time off-site enjoying a different adventure alongside experienced camp leaders in a safe and well-supervised environment! With limited enrollment for the program, Teen Adventure campers will find a strong sense of community in an inclusive environment where everyone gets to be themselves!

(Note: No camp on Friday's)

Ages: Brunswick students Grades 7-8 in Fall 2022

Dates: Monday– Thursday, June 20th-August 11th

Session I: June 20th - July 14th (No July 4th Program)

Session II: July 18h - August 11th

Time: 8am-4pm

At the Brunswick Junior High School and Various Other Locations

*This program is only open to Brunswick Residents

Brunswick Resident Fee:

8 Week Enrollment: \$1500.00

4 week Enrollment: \$800.00

There is a \$15 Sibling discount for each additional child registered. Discount not available online!

Instructor: Jonathan Fisk

Coordinator: Sabrina Best, sbest@brunswickme.org



* DAY CAMP *

An excursion-based summer enrichment program for Brunswick youth entering grades 7 and 8!

Proposed daily trips include:

Maine State Parks - Maine Wildlife Park

Funtown Splashtown USA - Aquaboggin

Get Air- Happy Wheels and so much more!

Due to limited enrollment this program is only open to Brunswick residents

Financial Aid Scholarships are available for Brunswick families that qualify! Reach out to the Parks and Recreation Department to inquire about scholarship opportunities!

ONLINE PROGRAM REGISTRATION IS AVAILABLE AT BRUNSWICKME.ORG

Or stop by our office located at
220 Neptune Drive, Brunswick Maine
Office Hours: Monday - Friday from 8:00am to 4:30pm

Brunswick Youth Soccer League (BYSL)



The Brunswick Parks & Recreation Department will be offering the Brunswick Youth Soccer League (BYSL), this fall. This Soccer Program is designed for youth entering grades K – 8 in 2022 that reside in Brunswick.

BYSL offers one of the most popular and well-established youth programs in Brunswick. Our goals are to teach soccer skills in an environment that fosters player growth, encourages fun, and develops self-esteem for every player. Over the course of 7 weeks your child will enjoy improving their skills in a community-based program, playing with and against friends, neighbors, and classmates, and with a balanced and healthy level of competition.

Please indicate during registration if there is a potential conflict in your family's schedule that needs to be considered for team placement! Teams are put together based on careful evaluations to make them fair & balanced. Unfortunately, we cannot accommodate requests to change teams—once a player is placed on a team, there will be NO changes allowed. It is also impossible for us to accommodate placement requests other than those from siblings.

League Info for K-8th Grade

Team Placement: You will be notified by September 2nd, 2022

First Week of Practices: Week of September 5th (Divisions 2-8)

Practice and Game Schedules: Will be provided by coaches

First Game: Saturday September 10th between 8:00 a.m. & 1:00 p.m.

Locations: Lishness Field, Harriet Beecher Stowe School, Shulman & Edwards Fields (you will be notified)

Picture Day: October 1st (schedule TBA)

Last Day of Games: Saturday, October 22

Register before July 8 at 4:30pm and receive \$15 OFF listed price!

\$5 sibling discount available for each additional sibling registered*

**Sibling Discount Not Available Via Online Registration*

ONLINE PROGRAM REGISTRATION IS AVAILABLE AT [BRUNSWICKME.ORG](https://brunswickme.org)

Or stop by our office located at

220 Neptune Drive, Brunswick Maine

Office Hours: Monday - Friday from 8:00am to 4:30pm

Brunswick Youth Soccer League (BYSL)



'Kids on the Pitch' for Grades K & 1 (Combined Division for K & 1 Boys and Girls)

\$60 (Register before July 8th for \$45)

Boys and Girls in Kindergarten and 1st grade will participate in BYSL's "Kids on the Pitch" fundamental program that focuses on learning the basics of soccer thru stations and drills followed by fun scrimmages. This program will meet on Saturday's (no weekday practices) and players will be placed on a coed team with a coach. Participants will receive a team shirt with registration!

Soccer League for Grades 2-3 (Separate Divisions for 2-3 Boys & 2-3 Girls)

\$65 (Register before July 8th for \$50)

Boys and Girls in Grades 2-3 will be placed on separate teams with a coach and have one weekday practice and one Saturday game. Participants will receive a team shirt & NEW THIS YEAR: a soccer ball with registration! (Balls will be handed out at the end of the season) Players are required to provide their own shin guards and socks. A mouth piece is optional and cleats are not needed at this age.

Soccer League for Grades 4-5 (Separate Divisions for 4-5 Boys & 4-5 Girls)

\$70 (Register before July 8th for \$55)

Boys and Girls in Grades 4-5 will be placed on separate teams with a coach and have one weekday practice and one Saturday game. This division will get 2 Extra Weeknight Games under the Lights! Participants will receive a team shirt & NEW THIS YEAR: a soccer ball with registration! (Balls will be handed out at the end of the season) Players are required to provide their own shin guards and socks. A mouth piece is optional and cleats are encouraged but not required at this age.

Soccer League for Grades 6-7-8 (Combined Division for 6-8 Boys and Girls)

\$75 (Register before July 8th for \$60)

Boys and Girls in Grades 6-8 will be placed on combined teams with a coach and have one weekday practice and one Saturday game. This division will get 2 extra weeknight games under the Lights! Participants will receive a team Jersey & NEW THIS YEAR: a soccer ball with registration! (Balls will be handed out at the end of the season) Players are required to provide their own shin guards and socks. A mouth piece is encouraged and cleats are strongly recommended at this age.

ONLINE PROGRAM REGISTRATION IS AVAILABLE AT BRUNSWICKME.ORG

Or stop by our office located at

220 Neptune Drive, Brunswick Maine

Office Hours: Monday - Friday from 8:00am to 4:30pm

Adult Sports Programming

The Brunswick Parks and Recreation Department is excited to announce a new program offering, Adult Intramural Sports League at the Brunswick Landing. This Recreational league is non-competitive and are designed for the average adult to come have fun while exercising! Gather some of your friends or make some new friends and re-live the fun you used to have as a kid!

Adult Kickball League (Summer)

Featured for Summer 2022 is the Adult Kickball League. Kickball meets on Mondays and Wednesdays at SMCC Field with game times starting at either 5:45pm or 7pm. The league fee is \$300 per team which includes regular season games, standings, playoffs, equipment, and site supervisor. If you are having a company sponsor your team, reach out to us to get your team registered and an invoice can be sent to the team sponsor. Individuals not affiliated with a team and teams interested in playing are encouraged to contact the Brunswick Parks & Rec at 725-6656.

Ages: Adults 18 and older

Dates: Monday and Wednesday

Time: 5:45pm or 7pm

Location: SMCC Field

Fee: \$300

Coordinator: David Coffill, dcoffill@brunswickme.org



Adult Dodgeball League (Fall)

Returning in Fall 2022 program will be the Adult Dodgeball League! Dodgeball meets on Tuesdays at the Brunswick Rec Center on Tuesdays; game times are either 6pm or 7pm. The league fee is \$200 per team which includes regular season games, standings, playoffs, equipment, and site supervisor. If you are having a company sponsor your team, reach out to us to get your team registered and an invoice can be sent to the team sponsor.

Ages: Adults 18 and older

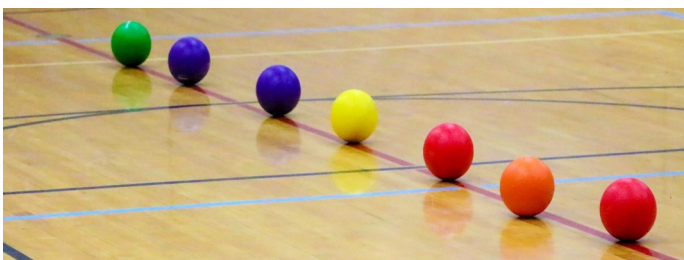
Dates: Tuesdays

Time: 6pm or 7pm

Location: Brunswick Recreation Center

Fee: \$200

Coordinator: David Coffill, dcoffill@brunswickme.org



**ONLINE PROGRAM REGISTRATION IS AVAILABLE AT
BRUNSWICKME.ORG**

Or stop by our office located at
220 Neptune Drive, Brunswick Maine
Office Hours: Monday - Friday from 8:00am to 4:30pm

Adult Sports Programming

Women's Slow Pitch Softball League

The League plays on Tuesdays and Thursdays at either Edwards Field off Jordan Avenue or SMCC field located off Admiral Fitch Avenue at the Brunswick Landing. The season features a 12 game schedule beginning in early June and ending near the beginning to middle of August. The league uses USA Softball umpires.

The League is open to teams but if individuals are interested in playing and are not affiliated with a team they should contact the Parks and Recreation Department at 207-725-6656. The league fees are \$550 with user fees of \$18 for residents of Brunswick and \$24 for non-residents.

Coordinator: David Coffill, dcoffill@brunswickme.org



Women's SLOW PITCH SOFTBALL League June-August 2022

**Tuesday and Thursday Evenings
Games Start At 6PM
*For Ages 16 and Up****



**TEAM ENTRY FEE: \$550
PLAYER FEES:
\$18 BRUNSWICK RESIDENTS
\$24 NON-RESIDENTS**

**Not connected to a team, but want
to play? Register as a "free agent"
and we'll connect you with a team!**

***Players under 18 must have signed
permission from a guardian in order to
join the league**

Adult Sports & Wellness

Is your life too busy to join a sports league, but you still enjoy getting out to play sports? Would you like to get some exercise and enjoy a little competition, but not have to commit to a long season? Consider attending our Pick-Up Adult Basketball and Pickleball offerings indoors at the Recreation Center!

Pick-up Pickleball

Pickleball is the fastest growing sport in the United States, as all ages have started to pick up a paddle and learn more about this fun and active sport. Pickleball is a fun and exciting (and addictive) racquet sport, which differs from tennis by utilizing a court less than half the size of a tennis court. It is primarily played as a doubles sport which means each person only has to cover about ten feet of court side-to-side. The rules are few and simple and the game utilizes an underhand serve, perforated plastic ball and "no-smash zone," seven feet in front of the net which allows for an easy-to-learn sport with a slower finesse-style of play.



A pickleball court has the same dimensions as a badminton court (44 by 20 feet) with a net that is two inches lower than a tennis net. The sport is played with wooden or composite paddles that are about twice the size of a ping pong paddle and a perforated plastic ball similar to a whiffle ball.

This indoor program offers 2 courts for a drop-in style play and allows adults to play many times throughout the week. This indoor program allows adults to come down and play a game that is best described as human ping pong! This program is welcoming new players all the time, be sure to come down and check it out!

Equipment

We have a selection of paddles and pickleballs for players to use during the session.

Day(s) and Times for Fall:

Monday-Friday from 8:30am – 2:30 pm

Monday/Wednesday/Friday from 5:30pm-8pm (times change in the Winter due to Basketball)

Location: Brunswick Recreation Center Gymnasium

Cost: \$2 Brunswick resident, \$3 Non-Brunswick resident (10-Punch Passes Available)

Please note the schedule is subject to change, for up-to-date weekly gym schedule please call or visit www.brunswickme.org.

ONLINE PROGRAM REGISTRATION IS AVAILABLE AT BRUNSWICKME.ORG

Or stop by our office located at

220 Neptune Drive, Brunswick Maine

Office Hours: Monday - Friday from 8:00am to 4:30pm

Adult Sports & Wellness

Pick Up Basketball

Adult Pick-up Basketball is open to men and women 18 years or older and is informal, not team based. Teams are made on the fly and games are any version the group decides on (3v3, half court, full court, pressing, slow down, 5v5 etc.), no officials so call your own fouls.

Day(s) and Times:

Monday, Wednesday, Thursday, Friday

From 6-8pm

Location: Brunswick Rec Center, Court 1

Pick-Up Coed Soccer at the Bike Path Field

Pick-Up soccer is being held Tuesday evenings starting at 6 p.m. starting April 26th, 2022. Bring a dark and light shirt, cleats, a ball if you have one and some water. Men and women welcome. Please park in appropriate parking spots. Do not park in double length spots designed for users with boat trailers.

Day(s) and Times:

Tuesdays

Starting at 6pm

Location: Bike Path Field at the Androscoggin River Bicycle and Pedestrian Path

Pick-Up Ultimate Frisbee at Harriet Beecher Stowe School

Pick-Up ultimate frisbee is being held at Harriet Beecher Stowe School on Sunday evenings from 5-7pm beginning May 15th, 2022. Bring a light and dark shirt.

Day(s) and Times:

Sundays

From 5-7pm

Location: Harriet Beecher Stowe School

Additional Sports

Have another sport that you would like to see offered that is not listed above? Please contact us at 207-725-6656.

ONLINE PROGRAM REGISTRATION IS AVAILABLE AT [BRUNSWICKME.ORG](https://brunswickme.org)

Or stop by our office located at

220 Neptune Drive, Brunswick Maine

Office Hours: Monday - Friday from 8:00am to 4:30pm

Coffin Pond



Coffin Pond is located in a beautiful mature white pine forest in Brunswick, Maine. Bordered on the west by the River Road and on the east by the Androscoggin River, the area features:

- ◆ Sandy Beach
- ◆ Chlorinated water
- ◆ Red Cross Certified Lifeguards
- ◆ A 55' Water Slide
- ◆ Playground Area
- ◆ Picnic sites
- ◆ Restrooms with changing facilities
- ◆ Concession Area
- ◆ Parking
- ◆ Level I & II American Red Cross Swim Lessons offered

Open June 18 — August 14
10am-5pm each day

DAILY GATE FEES

Resident

Adult (13 & over)	\$6.00
Youth (12 & under)	\$5.00
Group Rate(50 people or more)	\$4.00

Non-Resident

Adult (13 & over)	\$9.00
Youth (12 & under)	\$6.00
Group Rate(50 people or more)	\$5.00

NEW THIS YEAR

50% OFF after 3pm on Thursdays!

**DID YOU KNOW YOU CAN RESERVE THE
COFFIN POND FACILITY FOR YOUR FAMILY,
FRIEND, OR WORK-RELATED EVENTS?**

RENTALS INCLUDE:

- **Private Access to Coffin Pond from 5-7pm on Friday evenings!**
- **Certified Lifeguards on Duty!**
- **Use of the restroom facilities, playground and picnic areas!**
- **Rentals allow for up to 50 guests!**

Rental Fee: \$500



Coffin Pond is located on the River Road in Brunswick. Take Pleasant Street to the intersection of Pleasant Street and River Road. Turn onto River Road and travel a half mile to the entrance to Coffin Pond on the right.

MRPA Discount Tickets

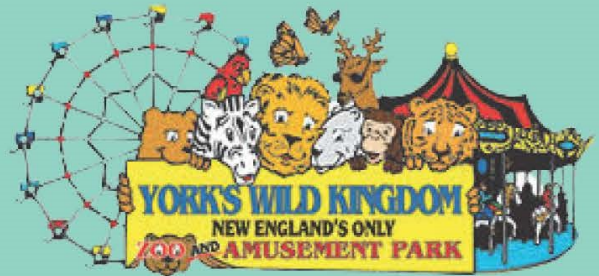
Discount Tickets for sale at the Parks and Recreation Department!



Combo Passes for Children and Adults
(children must be 48" or taller)

Your Cost: \$40.00

(Gate price \$50.00 / Savings of \$10.00)



Passes for Children (11 & Up) and Adults
ZOO ONLY

Your Cost: \$11.00

(Gate price \$15.75 / Savings of \$4.75)



General Admission Pass

Your Cost: \$21.00

(Gate price \$28.00 / Savings of \$7.00)

Sponsored by Maine Recreation and Park Association (MRPA)

Tickets must be purchased in-person during office hours,
Monday-Friday 8-4:30pm, at the Recreation Department

CASH ONLY!

Tickets on Sale Starting June 14, 2022

Brunswick
maine



Events

26th Annual Brunswick Bike Rodeo & Family Safety Day

Saturday, June 5
9 a.m. – NOON

New location this year
Brunswick Recreation Department
220 Neptune Drive, Brunswick
(Rain Date: Sunday, June 6
Same Time and Location)



Bicycle and helmet giveaways!

Free event! Bike Registration with Brunswick PD, Bicycle Safety Check from local professionals, Helmet Check/Helmet Give-Away, Bicycle Rodeo Safety Course, Bicycle Give-Aways.

Bring your own bike, or borrow one at the event.

Walk-ins welcome but preregistration is highly encouraged. COVID-19 safety restrictions will be in place. Register at www.brunswickme.org/parks-recreation



Walmart



Events

The Northwest Brunswick Neighborhood Association
in Collaboration with Brunswick Parks & Recreation

PRESENTS
MOVIES
in the
PARK

Free Family Fun
at Nathaniel Davis Park

Entrance beside 54 Pleasant Street in Brunswick - Free Parking

JUNE 16 - SPIDER-MAN: FAR FROM HOME (2019)


FREE Pizza from Portland Pie - Camp Games @ 7:30pm

JULY 21 - UNCHARTED (2022)

Taco the Town Food Truck & FREE Chips & Salsa from Bolos - Backyard Games with a Twist @ 7:00pm

AUGUST 18 - ENCANTO (2021)

Fat Boy Food Truck - Soccermania @ 6:30pm

 @moviesintheparkbrunswick - Picnicking Movie Concessions & Preshow by Parks & Rec and NWBNA

Rain Dates on Sundays, June 19, July 24 and Aug 21 - Movie starts at Dusk (1hr after preshow time above)



Events

Brunswick Parks & Recreation Presents

July 9th-10th

BACKYARD Camp Out

Sponsored by
Brunswick Parks & Recreation & the
Maine Recreation & Parks Association



FUN SAFE FAMILY ADVENTURE
IN YOUR BACK YARD OR LIVING ROOM

.....

Share photos of your adventure on our Facebook Page!

FREE Glowsticks to all participants!

Register before Thursday at 3pm and be entered to have a chance to win some great Camp out themed gifts from Walmart! Drawing Thursday at 3pm!

Call 207.725.6656 For more information.
Register at www.brunswickme.org/parks-recreation

Made with PosterMyWall.com

Events

WE RISE UP FOR
INCLUSION

WE RISE UP FOR
RESILIENCE

WE RISE UP FOR
PHYSICAL HEALTH

WE RISE UP FOR
MENTAL WELL-BEING

WE RISE UP FOR
ACCESS TO PLAY

WE RISE UP FOR
OUR COMMUNITY

**WE
RISE
UP** 
**FOR PARKS AND
RECREATION**

NRPA'S PARK AND RECREATION MONTH



#RiseUpJuly

www.nrpa.org/july

MERRELL. **ACTIVE**Net.

Get Involved!

The Brunswick Parks and Recreation Department Recreation Commission consists of five (5) members who are appointed by the Town Council and the Recreation Commission meets on the third Wednesday of the month at 7:00pm. The Recreation Commission has the following general powers and duties:

- The Recreation Commission shall review programs and formulate policies related to public recreation in the Town of Brunswick, including the coordination of its programs with those of other municipal departments.
- It shall be the overall responsibility of the Recreation Commission to promote, enhance and protect recreational opportunities in Brunswick in order to maintain and further develop the quality of life and objectives set forth in the Comprehensive Plan of the Town of Brunswick.
- The Recreation Commission shall be responsible to set forth policies and procedures for all programs operated and administered by the Brunswick Parks and Recreation Department.
- The Recreation Commission shall be responsible for the supervision of all recreational activities conducted by the department on all property owned by or under the control of the town, or on property not owned or under the control of the town.
- The Commission shall communicate with other recreational user groups to coordinate assistance, training, and use of facilities to collectively support extended recreational activities within the Town of Brunswick.
- The Recreation Commission shall develop an appropriate plan of maintenance based on an annual budget and CIP projections for the proper maintenance of the Recreation Department building(s) and for any other recreational structures or facilities placed under its jurisdiction by the Town Council.
- The Recreation Commission will assist in the development of an annual budget.

If the Recreation Commission does not spark your interest, considering one of the other 20+ Boards and Committees on which citizens may serve. More information can be found at our Website:

www.brunswickme.org/277/Boards-Committees

There may be other special committees not listed. Please contact the Town Clerk's office at 207-725-6658 for more information.



Brunswick Recreation Department

Household Information Form

To register online please visit: www.brunswickme.org

For questions please contact us at: (207) 725-6656 or email recprograms@brunswickme.org

Primary Guardian First Name _____ Last Name _____

Home Address _____ DOB _____ Gender _____

Mailing Address _____

Town _____ ST _____ Zip _____

Phone: Home _____ Work Phone _____ Ext. _____

Cell Phone _____ Pager _____ Email _____

Secondary Guardian

Secondary Guardian First Name _____ Last Name _____

Home Address _____ DOB _____ Gender _____

Mailing Address _____

Town _____ ST _____ Zip _____

Phone: Home _____ Work Phone _____ Ext. _____

Cell Phone _____ Email _____

Emergency Contact Information (Choose a relative/friend/neighbor in the event that you cannot be reached)

Name _____ Relationship _____

Address _____ Town _____

Phone: Home _____ Work _____ Cell _____

Participant Information

First & Last Name	DOB		Primary Care Physician/Phone	Medical (Conditions or Allergies)
	Grade	Gender		
First & Last Name	DOB		Primary Care Physician/Phone	Medical (Conditions or Allergies)
	Grade	Gender		
First & Last Name	DOB		Primary Care Physician/Phone	Medical (Conditions or Allergies)
	Grade	Gender		
First & Last Name	DOB		Primary Care Physician/Phone	Medical (Conditions or Allergies)
	Grade	Gender		

Brunswick Parks & Recreation

SUMMER 2022

Program Brochure



brunswickme.org/parks-recreation | 207.725-6656
recprograms@brunswickme.org
220 Neptune Drive Brunswick, Maine 04011