



SIMPSONS POINT LANDING CITIZENS ADVISORY COUNCIL

Final Report of Facility Recommendations to the Brunswick Town Council



Simpsons Point Public Access Facility Citizen's Advisory COMMITTEE CHARGE

Adopted the by the Brunswick Town Council – March 15, 2021

This Citizen's Advisory Committee (CAC) is to serve in an advisory capacity to the Brunswick Town Council providing recommendations addressing safety, environmental, managerial and neighborhood concerns and the broader Brunswick community interest at the Simpsons Point Landing (the "Facility").

The CAC charge includes the following five aspects of facility development and operations:

1) Advise the Town Council on Facility Operation and Management Policies:

The CAC will review public comment received to date regarding facility operations and management. The CAC will work with town staff including representatives of the Parks and Recreation Department, Coastal Resources Office, and Police Department in crafting suggestions for Facility operation. These suggestions will inform future ordinance revisions.

2) Provide Comment on Final Facility Designs:

The Brunswick Town Council has approved an approach to funding parallel parking construction and removal of the deteriorated concrete ramp planking. Public comment on the preliminary design has been received, and it is expected that the Town will soon draft final plans to satisfy permitting requirements. As these plans are drafted the CAC will review steps taken to address public concerns. Access improvements for the former Cornell property have only been presented conceptually. The CAC shall provide recommendations to guide the final design of these improvements.

3) Assessment of Transportation Management Issues:

The CAC will work with Town staff to identify potential signage, and traffic controls necessary to accommodate the existing level of use and minimize traffic impacts on the neighborhood resulting from public use of the Facility. This task will include recommendations for promoting bicycle and pedestrian access.

4) Development of Facility User Education Program:

The CAC will suggest approaches to promote responsible and safe use of the Facility. Recommendations will be used in the development and/or improvement of informational on-site signage / kiosk, Town website information and written materials regarding Facility use.

5) Assessment of Annual Operating Expenses:

Based on CAC recommendations for Facility operations and management, the CAC will work Town staff to assess the likely annual operating budget associated with the Facility.

6) Ongoing Stewardship

The Committee will consider ongoing measures to ensure the proper level of oversight of the Simpsons Point site to protect the ecological, historical, and recreational values. The Committee will work with town staff to explore the feasibility of a park ranger and/or a volunteer Friends of Simpsons Point group

Prepared by the Brunswick Coastal Resource Office

to aid in the year-round supervision of the Point. Consideration will also be given to the development of an annual review and report to the Council, including but not limited to (a) the effectiveness of the facility management policies, (b) the identification of any environmental concerns, and (c) any opportunities for additional land acquisition abutting the Point.

Expected Timing: It is expected that the CAC will deliver its recommendations to the Town Council by June 30th, 2021, or as soon as possible thereafter. Nothing herein shall prevent the Town Council or staff from taking appropriate actions in the meantime to address near term Facility safety or managerial issues.

*The CAC consists of the following 10 members:***Members Appointed by Town Council**

2 Town Councilors (**Steve Walker & Dan Ankles**)

2 members of the Brunswick Recreation Commission (**Mike Lyn & Melissa Archibald**)

2 members of the Brunswick Rivers and Coastal Waters Commission (**Marko Melendy & Will Wilkoff**)

1 member of the Brunswick Bicycle & Pedestrian Advisory Committee (**Jared Woolston via Planning**)

1 neighbor to the facility (directly across street, or abutting) (**John Muench**)

1 Pennellville/Simpson's Point Road neighborhood representative (**James Ecker**)

1 resident at large (**Anne Banks**)

Staff support for the CAC to include:

1 representative of the Coastal Resources Office (**Dan Devereaux**)

1 representative of the Department of Parks and Recreation (**Tom Farrell**)

Representatives from Public Safety Departments, Public Works, and Planning will be invited as needed.
(**Officer Dan Sylvain, ACO Heather Brown, Park Ranger Ben Gould**)

Televised Public Meeting LinksMeeting Minute Links

[August 5, 2021](#)

[August 5 Minutes](#)

[August 19, 2021](#)

[August 19 Minutes](#)

[September 2, 2021](#)

[September 2 Minutes](#)

[September 16, 2021](#)

[September 16 Minutes](#)

[September 30, 2021](#)

TBA

October 7, 2021

TBA

Executive Summary

The Simpsons Point Citizens Advisory Committee (SPCAC) is a citizen's board appointed by the Town Council to review and make recommendations regarding the facility design and management of a Simpsons Point Landing. Simpsons Point Landing is defined as the town owned parcel (Tax Map 31 Lot 4 C), the boat launch at the end of the road and the existing 30' right of way between private lands (Tax Map 31 Lot 4 & 4A). The SPCAC has reviewed and takes into consideration the recently added shoulder side parking, the resurfacing of Simpsons Point Road and all the neighboring roads. It also recognizes that these recommendations are being made in consideration of boat launch remaining hand carry only.

Simpsons Point Boat launch is unique in location and character, as it is one of the very few boat launches this far up in the intertidal area. The original right of way to the water at the Simpsons Point has historically supported residents wishing access the water for a variety of reasons. As the area has progressed over years the Town installed a boat launch in the right of way at the end of the road to accommodate sportsmen, fishermen, and residents who wished to access the upper portions of Middle Bay by motorboat. In 2006, the Maine Department of Inland Fisheries in partnership with the Town agreed to close the Simpsons Point Boat launch to all motorized launches in effort to meet eelgrass mitigation efforts resulting from the States construction of the Mere Point Boat Launch. Since the closure, and in the following years Simpson Point Landing has become a popular destination point for swimming, kayaking, birding, beachgoing, sunbathing, bank fishing, dog walking, cross country skiing and the like. This increase in usage has led to more user conflicts. In 2018 the Town purchased a 4acre parcel of land situated along Simpsons Point Road, 350' north of the boat landing. The SPCAC has taken this parcel into account in making the recommendations outline in this report.

ADVISORY COUNCIL RECOMENDATIONS

Advise the Town Council on Facility Operation and Management Policies:

- Leave Simpsons Point Landing as a hand carry access point. Reconvene the SPCAC if there is request or consideration by the town to reopen facility to motorized boat launches.
- Allow swimming by codifying the activity in the Town ordinances
- Install additional signage to encourage people to leash their dogs
- Enforce existing leash laws

Provide Comment on Final Facility Designs: ([See Attached Map](#))

- Make needed repairs to maintain a safe public access down the existing boat ramp
- Prohibit on street parking outside newly designated shoulder parking down to Pennell Way
- Create handicapped parking stall closest to ramp
- Recommend Town staff work with abutters on strategies to develop signage and other strategies that mitigate trespassing
- Create a detailed plan on the 4-acre town owned parcel that encourages public use
- Install an appropriate designed kiosk along the frontage of the town owned parcel
- Install a facility use sign along the frontage of the town owned parcel

Assessment of Transportation Management Issues:

- Road striping to help delineate parking along the easterly edge of the newly created shoulder bump out.
- Accommodate for bicycles with an additional 2 bicycle racks along the town owned parcel
- Encourage bicycle and pedestrian use of the facility through community outreach and education via the Bike and Pedestrian Committee
- Delegate planning or engineering staff to further evaluate traffic calming approaches on Simpsons Point Road and throughout the entire Penneville neighborhood

Development of Facility User Education Program

- Increase use of information inside the existing kiosk to educate public on facility and town wide park policies.
- Increase use of online and website materials that help inform the public on park policies and property boundaries
- Update the Coastal Waters Access Guide with any new information regarding Simpsons Point.

Assessment of Annual Operating Expenses:

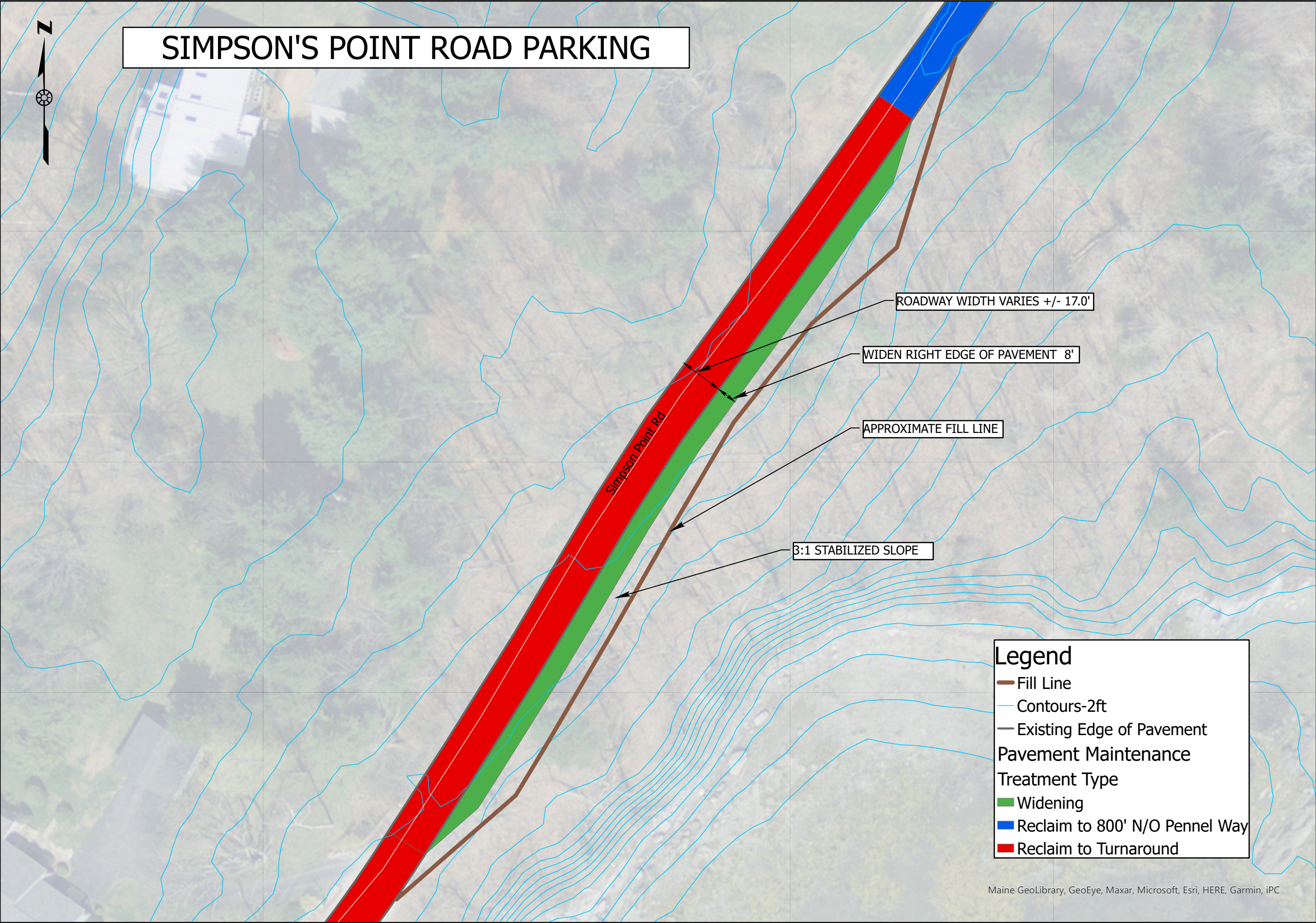
- See attached operating budget provided by Parks and Recreation Department

Ongoing Stewardship

- Utilize the Rivers and Coastal Waters Commission for ongoing town stewardship of the facility



Simpsons Point Landing is defined as the 30' right of way to water accessible between private lands by Simpson's Point Road (Tax Map 31 Lot 4 & 4A) & the 4 acres Town owned parcel (Tax Map 31 Lot 4 C)



Town of Brunswick
INCORPORATED 1739
85 Union Street
Brunswick, Maine 04011-2418
TELEPHONE (207) 725-6659

REVISIONS	DATE		BY	

GENERAL PLAN
SIMPSON'S POINT PARKING
SIMPSON'S POINT ROAD

MHP	MHP	XX
DESIGNED	DRAWN	CHECKED

SCALE: 1" = 35'

DATE: 1/28/2021 8:58 AM

SHEET NO. 1 of 1