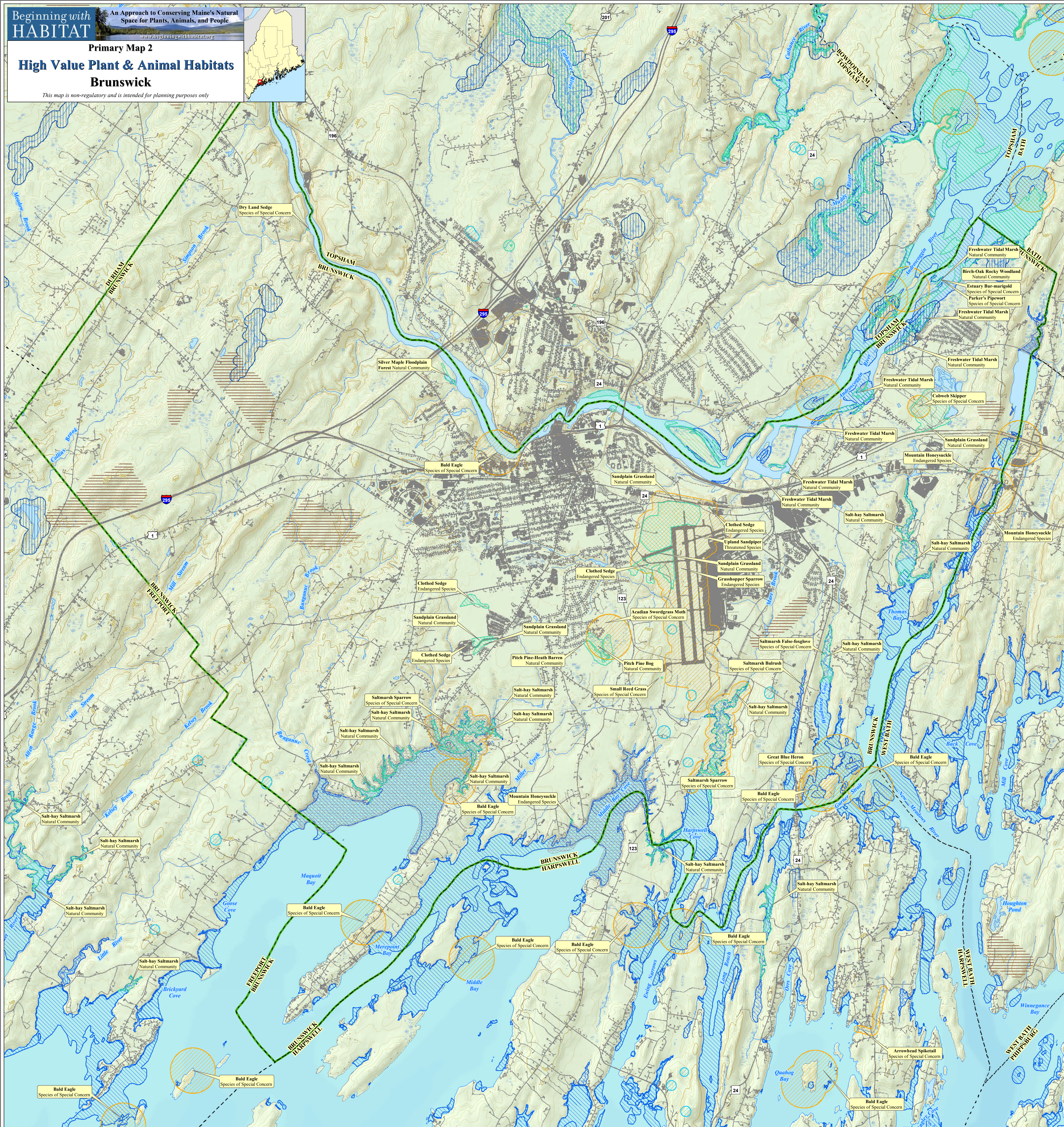
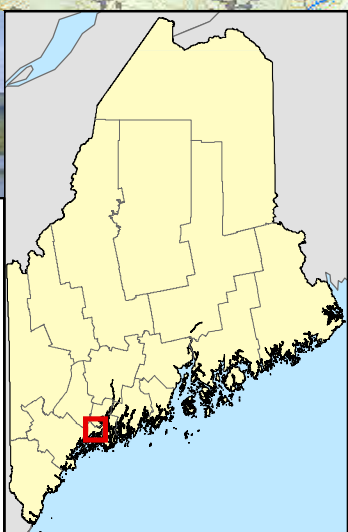






Primary Map 2
High Value Plant & Animal Habitats
Brunswick


www.beginningwithhabitat.org



Beginning with Habitat (BWH) is a voluntary tool intended to assist landowners, resource managers, planners, and municipalities in identifying and making informed decisions about areas of potential natural resource concern. This data includes the best available information provided through BWH's coalition partners as of the map date, and is intended for information purposes only. It should not be interpreted as a comprehensive analysis of all potential natural resource concerns. The map is not intended to be used as a basis to flag areas where agency consultation may be appropriate. Habitat data sets are updated continuously as more accurate and current data becomes available. However, as many areas have not been completely surveyed, features may be present that are not yet mapped, and the boundaries of some depicted features may need to be revised. Local landowners and resource managers are encouraged to provide additional information on locations of resources, please contact our office. Some habitat features depicted on this map are regulated by the State of Maine through the Maine Endangered Species Act (Essential Habitats and threatened and endangered species occurrences) and Natural Resources Protection Act (Significant Wildlife Habitat). We recommend consultation with MDIFW Regional Biologists or NMNAP Ecologists if activities are proposed within resource areas depicted on this map. Map users are encouraged to consult with the appropriate regulatory concerns and minimize agency review time. For MDIFW and NMNAP contact information, visit <http://www.beginningwithhabitat.org/contacts/index.html>.

- | | |
|---|--|
|  | Organized Township Boundary |
|  | Unorganized Township |
|  | Selected Town or Area of Interest |
|  | Developed: Impervious surfaces such as buildings and roads |


Rare, Threatened, or Endangered Wildlife

 Known rare, threatened, or endangered species occurrence and/or the associated habitats based on species sightings.

Consult with an MDIFW regional biologist to determine the relative importance and conservation needs of the specific location and supporting habitat. The names of some species have been masked with a "Rare Animal" designation on the map for further protection. For more information regarding individual species visit our website, http://www.maine.gov/ifw/wildlife/endangered/listed_species_me.htm, for species specific fact sheets.

The Federal Endangered Species Act requires actions authorized, funded, or carried out by federal agencies be reviewed by the U. S. Fish and Wildlife Service. If your project occurs near an occurrence of the Atlantic Salmon, Roseate Tern, Piping Plover, Canada Lynx, M. England Cottontail, Furbish's Lousewort, or Small-whorled Pagonia contact the Maine Field Office, USFWS, 1168 Main St., Old Town, ME 04468.

Rare or Exemplary Plants and Natural Communities

 Rare Plant Locations

Known rare, threatened, or endangered plant occurrences are based on field observations. The names of some species have been masked with a "Rare Plant" designation on the map for further protection. Consult with a Maine Natural Areas Program (MNAP) Ecologist to determine conservation needs of particular species. For more information regarding rare plant the complete list of tracked species and fact sheets for those species can be found at:

The MNAP has classified and distinguished 98 different natural community types that collectively cover the state's landscape. These include such habitats as floodplain forests, coastal bogs, alpine summits, and many others. Each type is assigned a rarity rank of 1 (rare) through 5 (common). Mapped rare natural communities or ecosystems, or exemplary examples of common natural communities or ecosystems, are based on field surveys and aerial photo interpretation. Consult with an MNAP Ecologist to determine conservation needs of particular communities or ecosystems.

Essential Wildlife Habitats

- Roseate Tern Nesting Area or
Piping Plover-Least Tern Nesting, Feeding, & Brood-Rearing Area

Maine's Department of Inland Fisheries & Wildlife (MDIFW, www.state.me.us/irfw) maps areas currently or historically providing habitat essential to the conservation of endangered or threatened species as protected by the Maine Endangered Species Act (12 MRSA, Chapter 925, Subchapter 3, Sections 12804 and 12806) and regulations (MDIFW Rules, Chapter 8.05). Identification of Essential Habitat areas is based on species observations and confirmed habitat use. If a project occurs partly or wholly within an Essential Habitat, it must be evaluated by MDIFW before state and/or municipal permits can be approved or project activities can take place.


Significant Wildlife Habitats

- Candidate Deer Wintering Area

Forested area possibly used by deer for shelter during periods of deep snow and cold temperatures. Assessing the current value of a deer wintering area requires on-site investigation and verification by IF&W staff. Locations depicted should be considered as approximate only.

- Inland Waterfowl / Wading Bird

Freshwater breeding, migration/staging, and wintering habitats for inland waterfowl or breeding, feeding, loafing, migration, or roosting habitats for inland wading birds.

- 
- Seabird Nesting Island

An island, ledge, or portion thereof in tidal waters with documented, nesting seabirds or suitable nesting habitat for endangered seabirds.

-
- Shorebird Areas

Coastal staging areas that provide feeding habitat like tidal mud flats or roosting habitat like gravel bars or sand spits for migrating shorebirds.

-
- Tidal Waterfowl / Wading Bird

Breeding, migrating/staging, or wintering areas for coastal waterfowl or breeding, feeding, loafing, migrating, or roosting areas for coastal wading birds. Tidal Waterfowl/Wading Bird habitats include aquatic beds, eelgrass, emergent wetlands, mudflats, seaweed communities, and reefs.

-
- Significant Vernal Pools

A pool depression used for breeding by amphibians and other indicator species and that portion of the critical terrestrial habitat within 250 ft of the spring or fall high water mark. A vernal pool must have the following characteristics: natural origin, nonpermanent hydroperiod, lack permanently flowing inlet or outlet, and lack predatory fish.

Maine's Natural Resources Protection Act

Maine's Natural Resources Protection Act (NRPA, 1988) is administered by the Maine Department of Environmental Protection (MDEP; <http://www.maine.gov/dep/blw/docstand/nrpage.htm>) and is intended to prevent further degradation and loss of natural resources in the state, including the above Significant Wildlife Habitats that have been mapped by MDIFW. MDEP has regulatory authority over most Significant Wildlife Habitat types. The regional MDEP office should be consulted when considering a project in these areas.

Atlantic Salmon Spawning/Rearing Habitat

-  Atlantic Salmon Rearing Habitat
-  Atlantic Salmon Spawning Habitat
- Atlantic Salmon Limited Spawning Habitat

Mapped by Atlantic Salmon Commission (ASC) and US Fish & Wildlife Service (USFWS) from field surveys on selected Penobscot and Kennebec River tributaries and the Dennys, Ducktrap, East Machias, Machias, Pleasant, Narraguagus, and Sheepscot Rivers.

Data Sources

DATA SOURCE INFORMATION

TOWNSHIP BOUNDARIES
Maine Office of GIS: *Metwp24* (2013)
ROADS
Maine Office of GIS, Maine Department of Transportation: *Metodup* (2015)
HYDROLOGY
U.S. Geological Survey National Hydrography Dataset (NHD) Maine (2012)
DEVELOPED
Maine Office of GIS, Maine Department of Inland Fisheries and Wildlife, and multiple other agencies: *mperv* (2015)
ESSENTIAL & SIGNIFICANT WILDLIFE HABITATS
Maine Office of GIS, Maine Department of Inland Fisheries & Wildlife: *DWA, ETSO, Eplntr, Ehtrent, WWH, Sni, Shorebd, TWWH* (2003-2015)
RARE NATURAL COMMUNITIES & PLANTS
Maine Natural Areas Program: *MNAP*, *es* (2015)
ATLANTIC SALMON HABITATS
Maine Office of GIS, Maine Atlantic Salmon Commission, U.S. Fish & Wildlife Service: *Asashb* (2013)

DATA SOURCE CONTACT INFORMATION

DATA SOURCE CONTACT INFORMATION

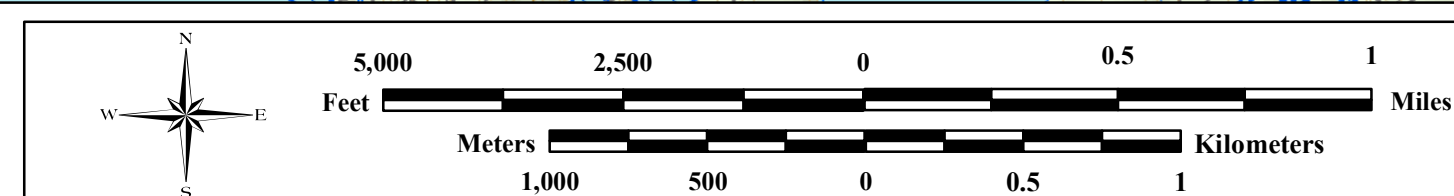
Maine Office of GIS: <http://www.maine.gov/megis/catalog/>
Maine Natural Areas Program: <http://www.maine.gov/dacf/mnap/index.html>
Maine Department of Inland Fisheries & Wildlife: <http://www.maine.gov/ifw/>
U.S. Fish & Wildlife Service, Gulf of Maine Program: <http://gulfmaine.fws.gov/>
Maine Atlantic Salmon Commission: <http://www.maine.gov/ascc/>
Maine Department of Transportation: <http://www.maine.gov/mdot/>

DIGITAL DATA REQUEST

To request digital data for a town or organization, please visit our website.
http://www.beginningwithahabitat.org/the_maps/gis_data_request.html

DIGITAL DATA REQUEST
To request digital data for a town or organization, please visit our website:
http://www.beginningwithhabitat.org/the_maps/gis_data_request.html

Map Prepared by Maine
Department of Inland
Fisheries & Wildlife
October 2018



1:24,000 Scale
Projection: UTM
Datum: NAD 1983