



# Brunswick Fire Department

2020 Presentation

## STAFFING

CHIEF

2 DEPUTIES

-1 Fire and Life Safety Inspector

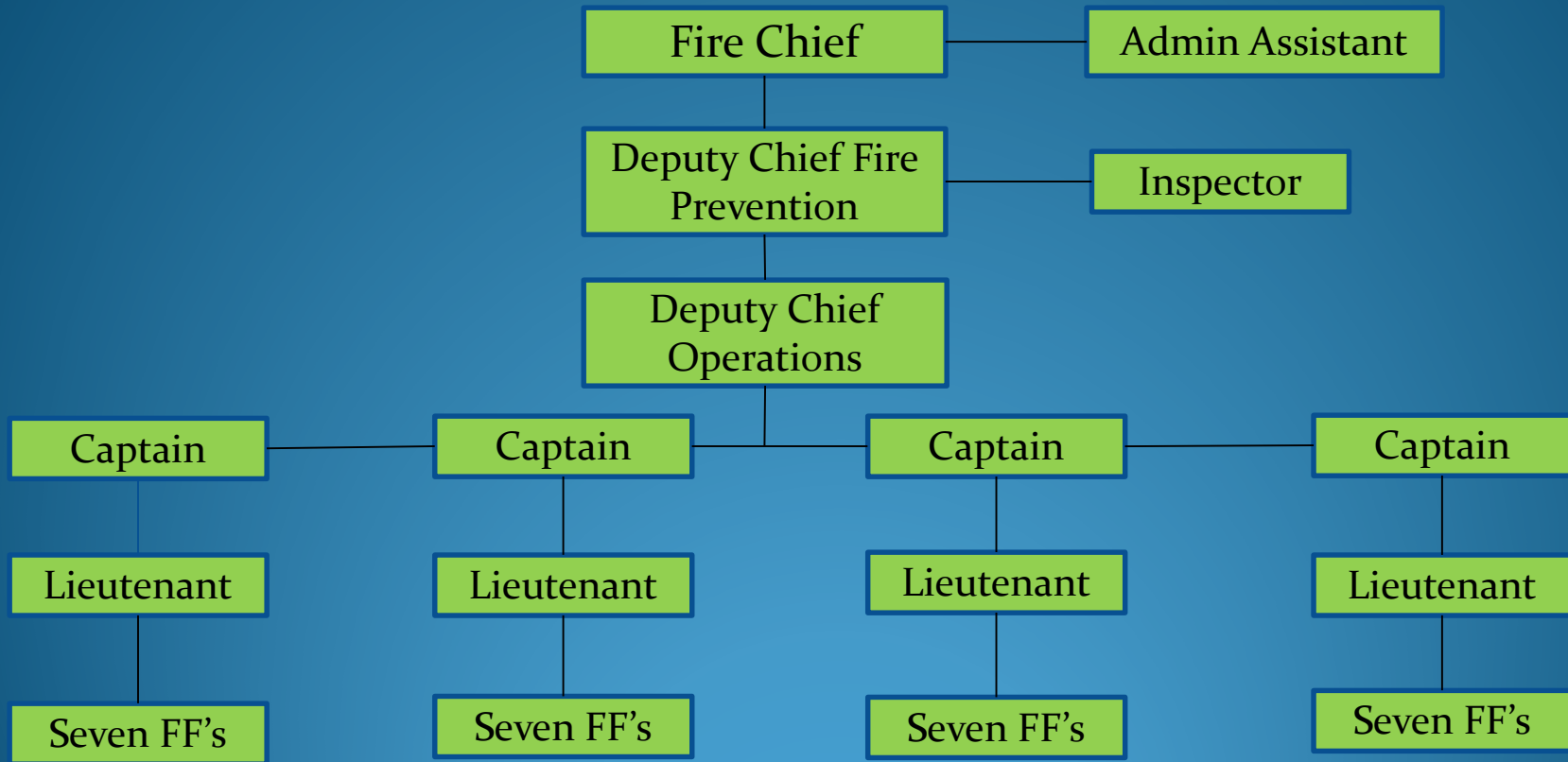
1 ADMIN ASSISTANT

36 CAREER FIREFIGHTERS (4 SHIFTS OF 9)

PROVIDE FIRE PROTECTION, EMS, HAZ MAT, HIGH ANGLE RESCUE, CONFINED SPACE RESCUE, ICE AND WATER RESCUE, FIRE INSPECTIONS, FIRE PREVENTION AND FIRE INVESTIGATION, EMERGENCY MANAGEMENT

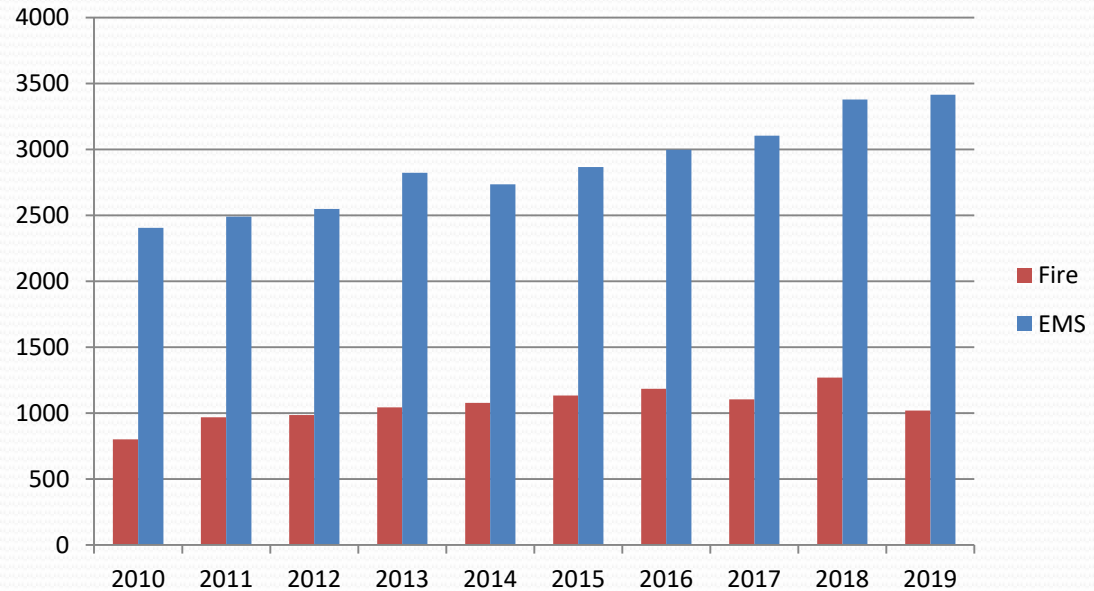
# Brunswick Fire Department

## 2020 Presentation



## CALL STATS FISCAL YEAR

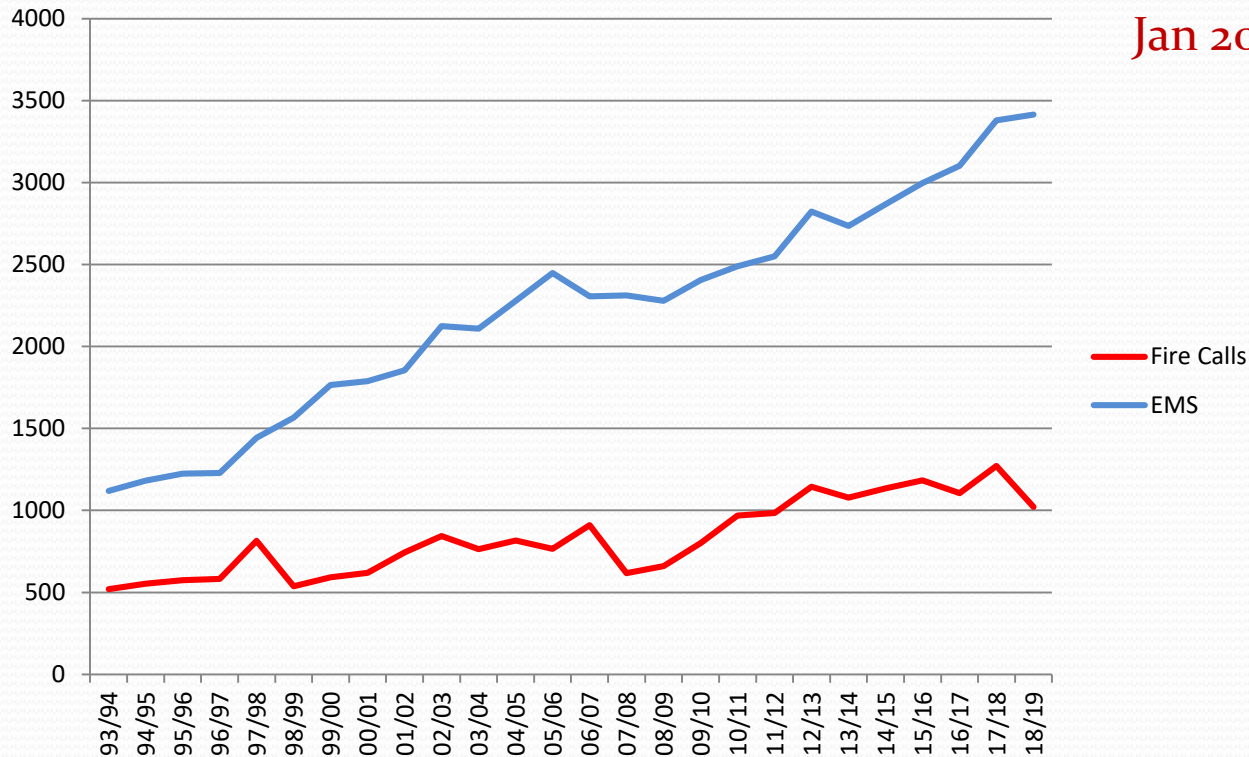
	FIRE	EMS
2010	801	2,406
2011	969	2,490
2012	985	2,549
2013	1,044	2,823
2014	1,078	2,736
2015	1,134	2,867
2016	1,184	2,997
2017	1,105	3,103
2018	1,271	3,379
2019	1,021	3,415



Prior 90 thru 1998 7 on a shift

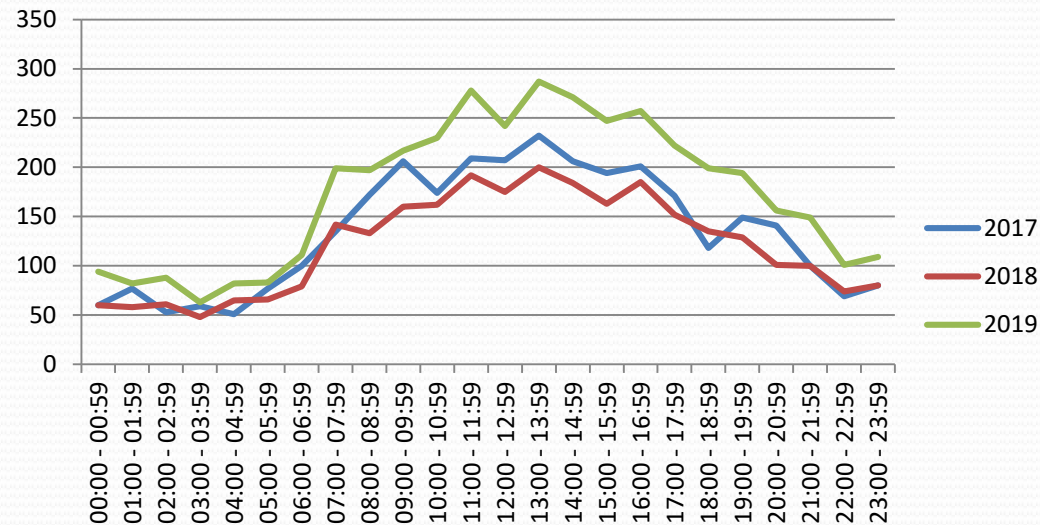
Aug 99 went to 8 on a shift

Jan 2020 went to 9 on a shift



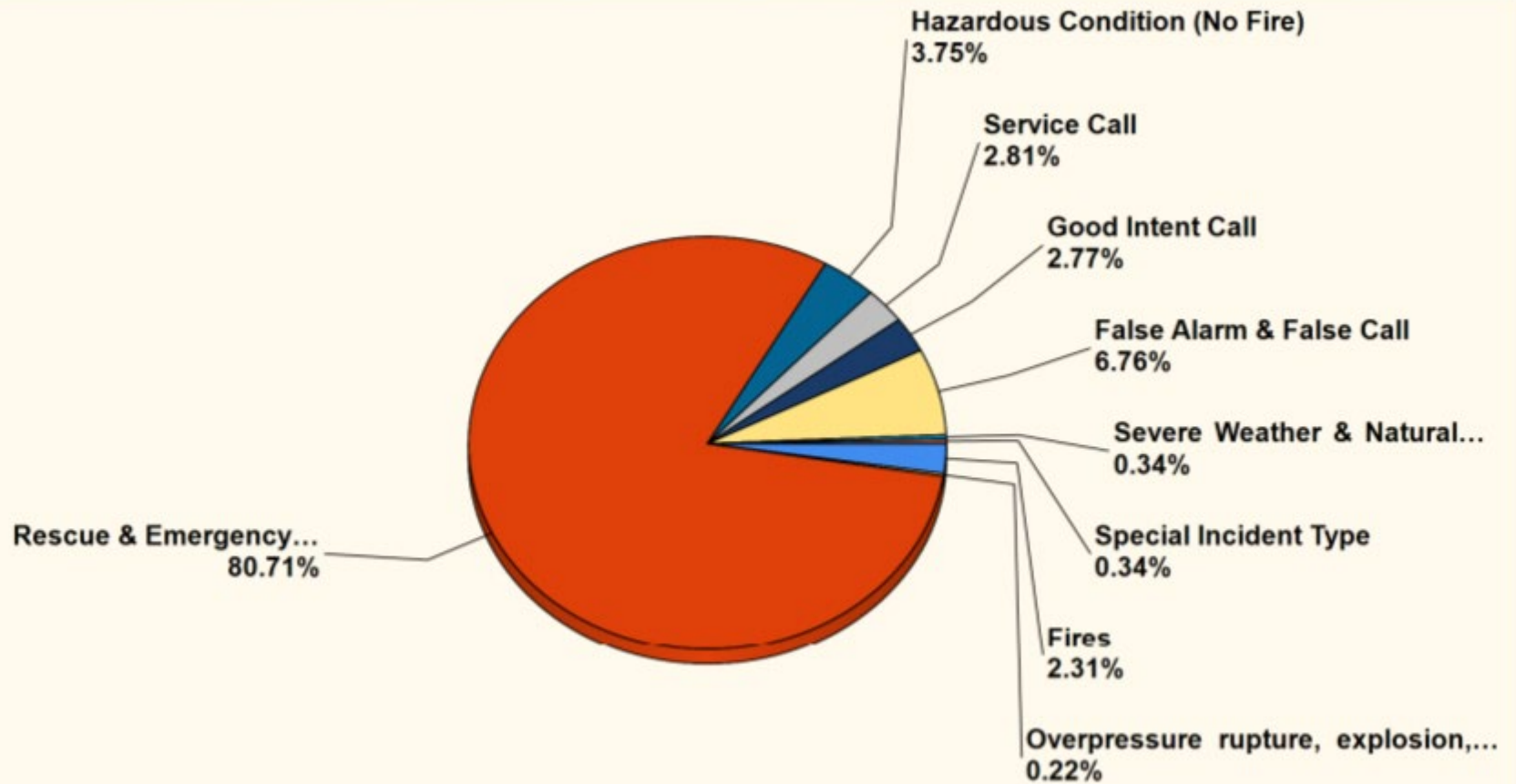
## Calls for Service by hour of the Day

HOUR	16-17	17-18	18-19
00:00 - 00:59	60	60	94
01:00 - 01:59	77	58	82
02:00 - 02:59	53	61	88
03:00 - 03:59	59	48	63
04:00 - 04:59	51	65	82
05:00 - 05:59	77	66	83
06:00 - 06:59	100	79	111
07:00 - 07:59	135	142	199
08:00 - 08:59	172	133	197
09:00 - 09:59	206	160	217
10:00 - 10:59	174	162	230
11:00 - 11:59	209	192	278
12:00 - 12:59	207	175	242
13:00 - 13:59	232	200	287
14:00 - 14:59	206	184	271
15:00 - 15:59	194	163	247
16:00 - 16:59	201	185	257
17:00 - 17:59	171	152	222
18:00 - 18:59	118	135	199
19:00 - 19:59	149	129	194
20:00 - 20:59	141	101	156
21:00 - 21:59	100	100	149
22:00 - 22:59	69	74	101
23:00 - 23:59	80	80	109



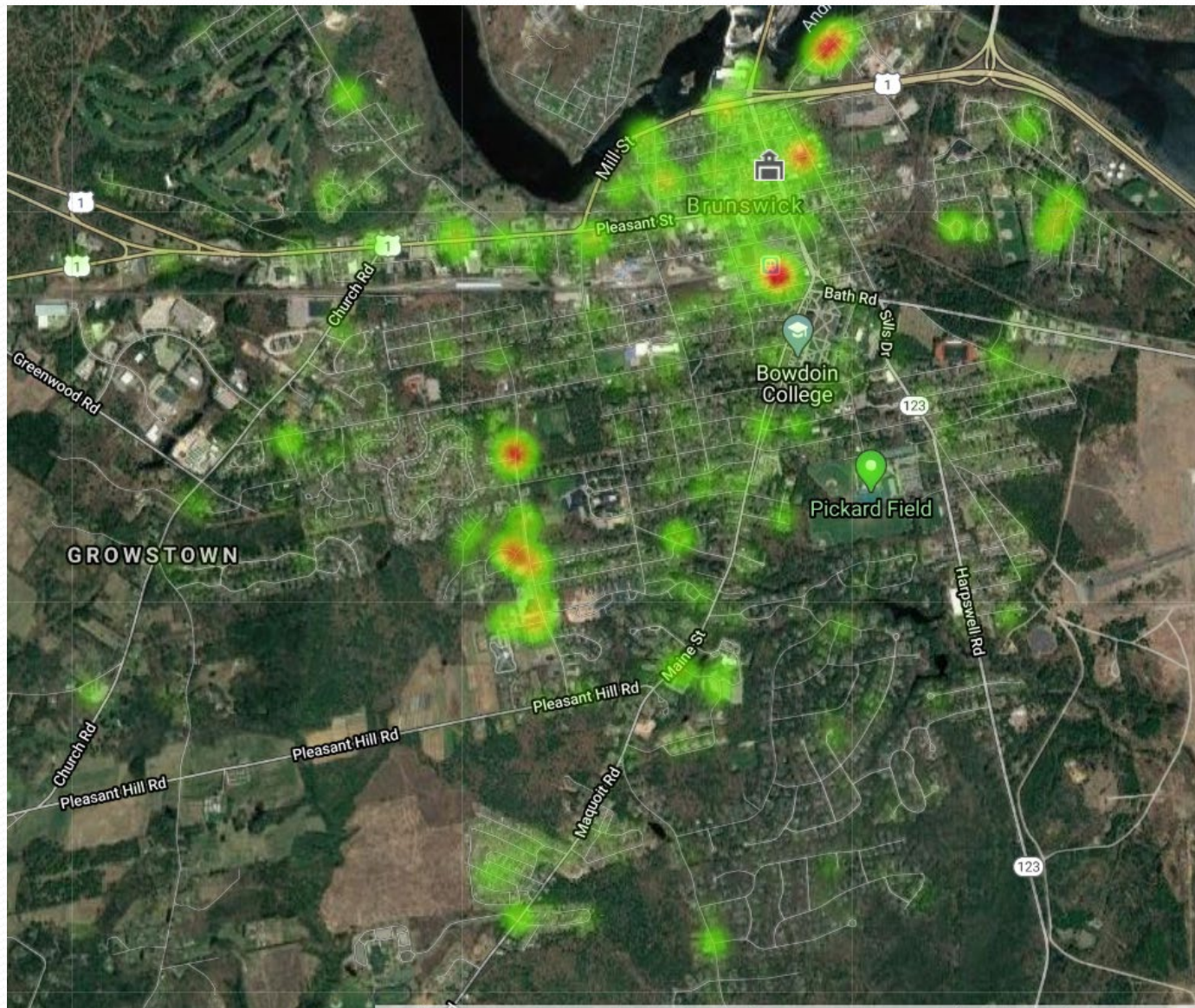
Most activity Starts between 4 and 5 a.m. Goes to between 10 and 11 p.m.

## Breakdown by Major Incident Type FY 2018-19



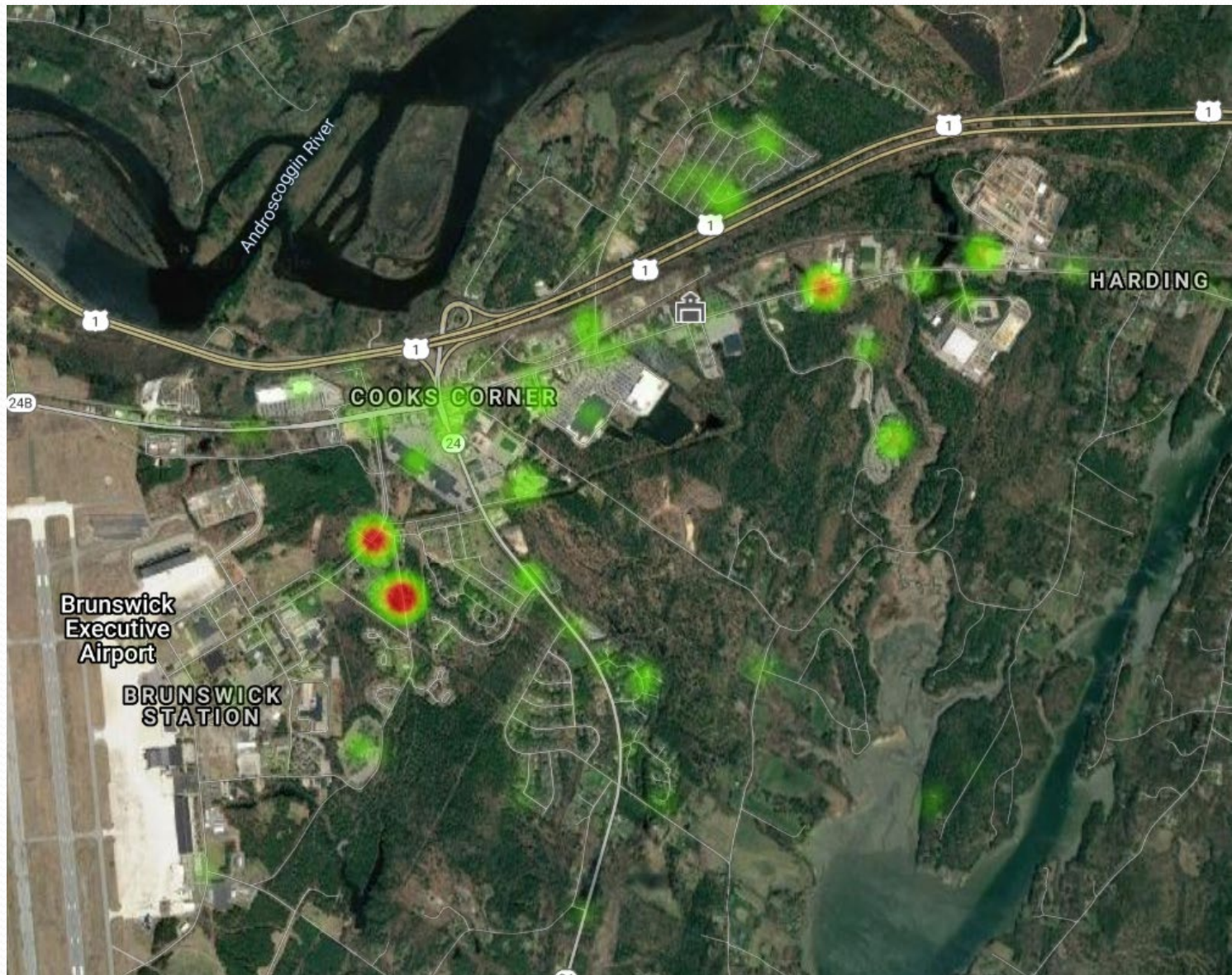


## Heat Map of the Central Station District





## Heat Map of the Emerson Station District





## STAFFING COMPARISON

Municipality	Population	Calls	Sq Miles	Firefighters	FF's/1,000	Per diem
Auburn	23,052	4,695	65	64	2.8	
So. Portland	25,483	4,625	12	64	2.5	
Augusta	19,136	6,430	55	46	2.4	
Biddeford	21,282	5,395	30	40	1.9	
Sanford	20,893	3,945	47	46	2.2	
Westbrook	18,730	4,098	17	42	2.2	24
Saco	19,485	3,670	38	36	1.8	
<b>Brunswick</b>	<b>20,645</b>	<b>4,652</b>	<b>46</b>	<b>36</b>	<b>1.7</b>	
Scarborough	20,023	4,257	47	31	1.5	54

Sq. Miles Does Not include water area

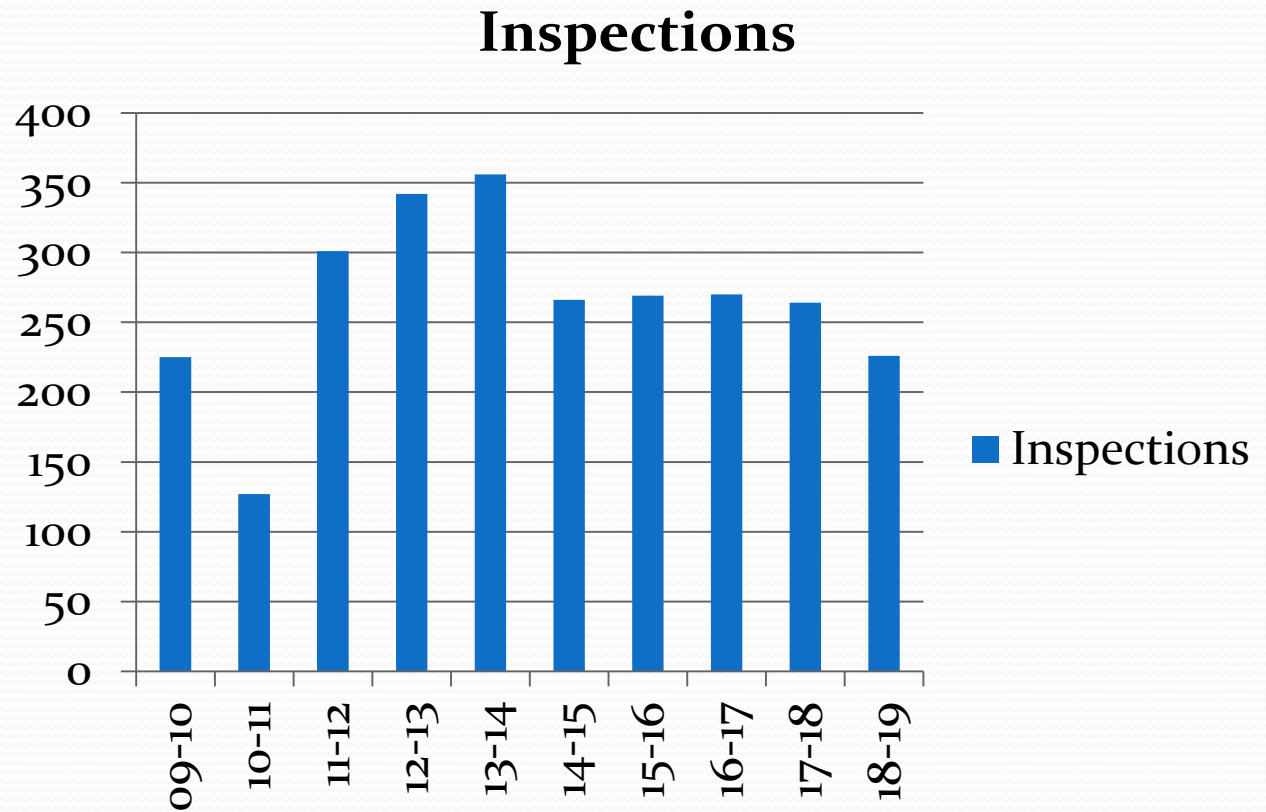


## Request 4 New Firefighters

- Goal is 10-12 on shift
  - EMS calls 1443, Fire 814 (Total 2257) in 1998
  - EMS calls 3415, Fire 1021 (Total 4436) in 2019
- Not Getting Callback personnel as often
- Used to have 30-40 call FF's
- NAS Fire had 21 on a shift, Engine company of 4 whenever we needed it
- Multiple over lapping calls
- Going to MMC more often
  - FY 18 (159 times, 81 from MCH, 78 from scene)
  - FY 19 (193 times, 103 from MCH 90 from scene)
  - FY 20 (133 times, 87 from MCH 46 from scene)
- Longer transport and turn around time.
- EMS Protocol changes requiring more people for long periods of time
- Every Department seeing more mutual Aid requests
- Brunswick Landing more area and more buildings (Cal. Yr. 2019 did 434)

## Inspections

2009-10	225
2010-11	127
2011-12	301
2012-13	342
2013-14	356
2014-15	266
2015-16	269
2016-17	270
2017-18	264
2018-19	226



New inspector hired early February- just getting started on the multi unit inspections

## BUDGET BREAKDOWN

Operations

→ \$587,510.00

Salaries

\$2,739,496.00

Benefits

→ \$1,238,376.00

- Salaries
- Benefits
- Operations

Salaries – Current \$2,412,701.00

Requested \$2,739,496.00

Includes request for new personnel

Benefits – Current \$1,077,753.00

Requested \$1,238,376.00

Operations – Current \$551,105.00 (includes Central and Emerson Station budgets)

Requested \$587,510.00 (includes Central and Emerson Station Budgets)

This also includes Capital equipment and Fire Prevention



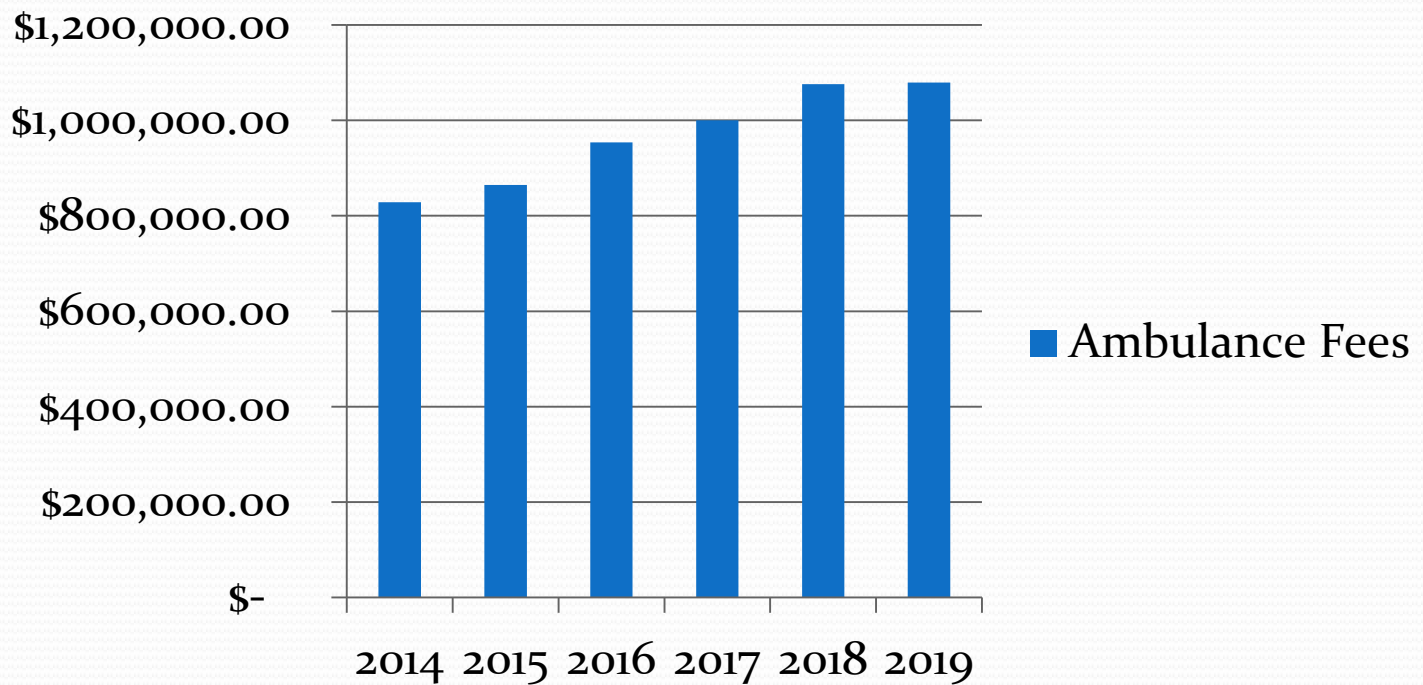


# REVENUES

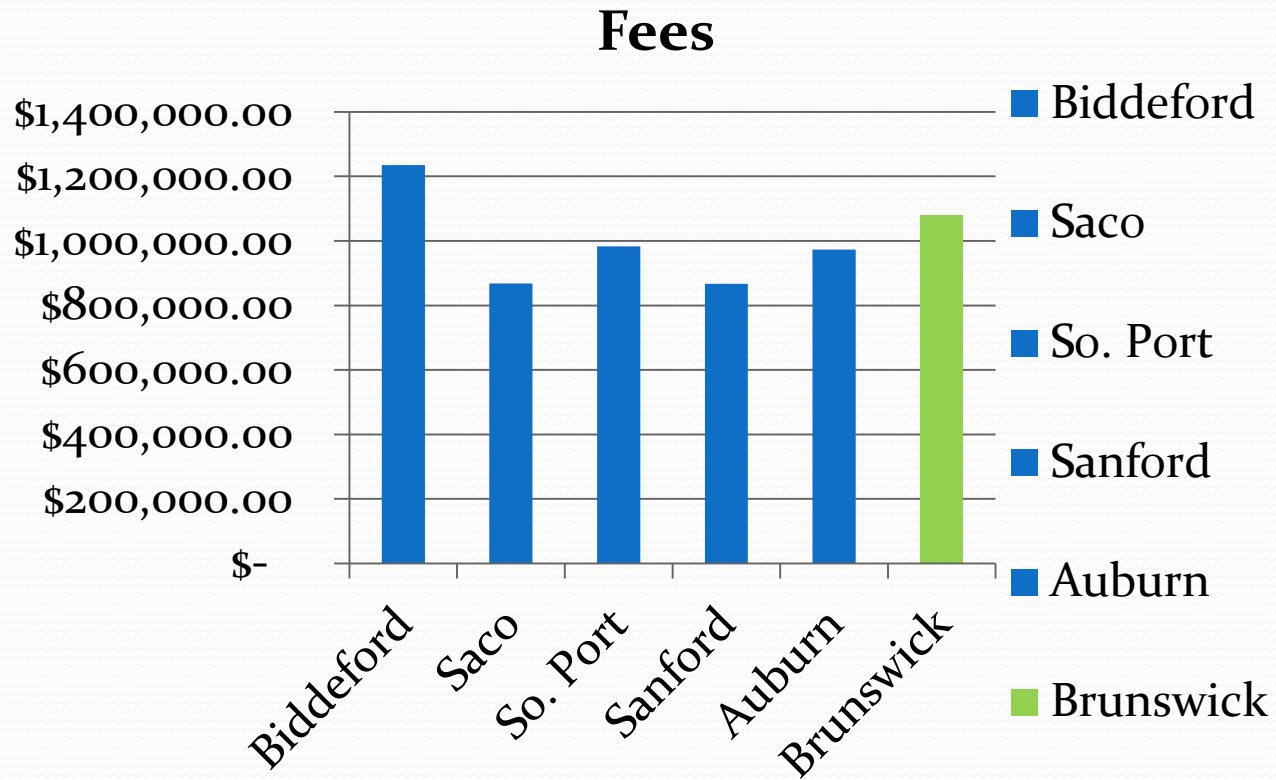
	2015-16	2016-17	2017-18	2018-19
Fire Code Permits	\$ 1,125.00	\$ 2,425.00	\$ 1,795.00	\$ 2,300.00
Ambulance Fees	\$ 953,894.00	\$ 1,000,396.77	\$ 1,076,057.86	\$ 1,079,235.10
Special Details	\$ 11,652.00	\$ 1,095.42	\$ 2,216.50	\$ 969.66
False Alarm, Fire	\$ -			
EMA Planning Grant	\$ 12,398.00	\$ 3,143.39	\$ 3,143.90	
SAFER Grant				
Fire Miscellaneous	\$ 205.00	\$ 1,671.70	\$ 154.00	\$ 4,560.01
	\$ 979,274.00	\$ 1,008,732.28	\$ 1,083,367.26	\$ 1,087,064.77



## Ambulance Fees



## Similar Departments Comparisons



## Small Vehicle Replacement Fund

- Has allowed Flexibility with replacement
- Ambulances are included
  - Current fleet re-chassis
  - Less cost

Has been very helpful with planning





## **Capital Equipment in the Budget**

- Modems for our Cardiac Monitors
  - Allows for storage of information cloud
  - Easy upload of the information to the run sheet later
  
- Medication Pumps
  - Current pumps were purchased used
  - Old technology
  - More of our meds are require pumps for administration
  - Very useful during transports to MMC



## CIP Items

- Replacement of Tank 2
  - Purchased 1994
  - 1500 gallons of water
  - 1250 pump
  - Primary water at rural fires
  - Brush Fire response
  - Is a back up pumper



## CIP Continued

### Air Pack replacement

- Purchased 2006
- Life Line for FF's
- Cost of repairs is increasing
  - Older equipment breaks down easier
- New NFPA standards out for last 2 years



## CHALLENGES

1. Continued increase in costs, both Personnel and Operational
2. Increase in calls for service will continue to stretch our current resources
  1. STAFFING
    - a. Has not kept up with the increase in calls over 20 plus years
    - b. Difficult when covering 2 stations
    - c. Changes with Maine EMS Protocols requires more personnel on certain types of calls
3. Brunswick Landing, as more buildings come on-line and increased use of the area
4. With increased call volume training on duty becoming more and more difficult

