



Brunswick Fire Department

2021 Presentation

STAFFING

CHIEF

2 DEPUTIES

-1 Fire and Life Safety Inspector

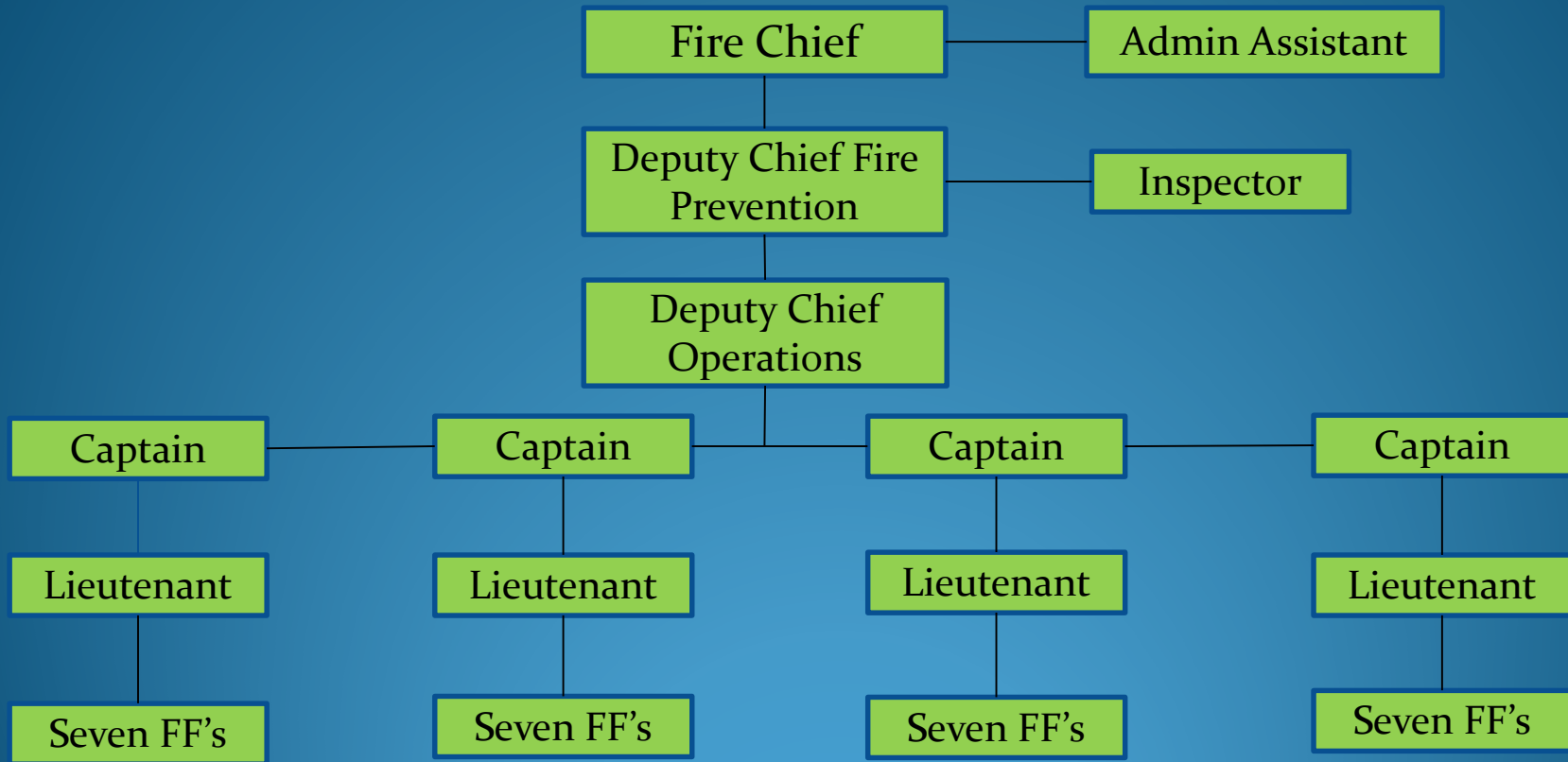
1 ADMIN ASSISTANT

36 CAREER FIREFIGHTERS (4 SHIFTS OF 9)

PROVIDE FIRE PROTECTION, EMS, HAZ MAT, HIGH ANGLE RESCUE, CONFINED SPACE RESCUE, ICE AND WATER RESCUE, FIRE INSPECTIONS, FIRE PREVENTION AND FIRE INVESTIGATION, EMERGENCY MANAGEMENT

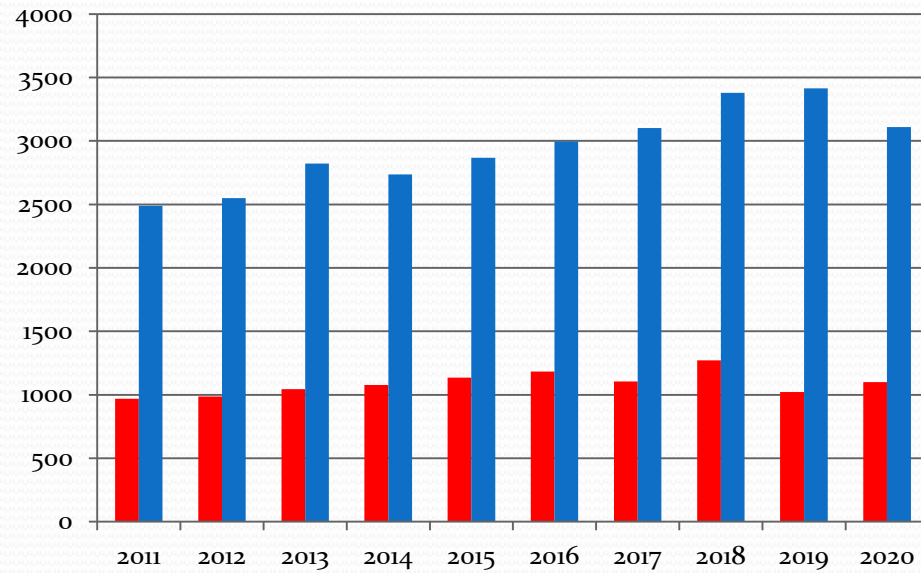
Brunswick Fire Department

2021 Presentation



CALL STATS FISCAL YEAR

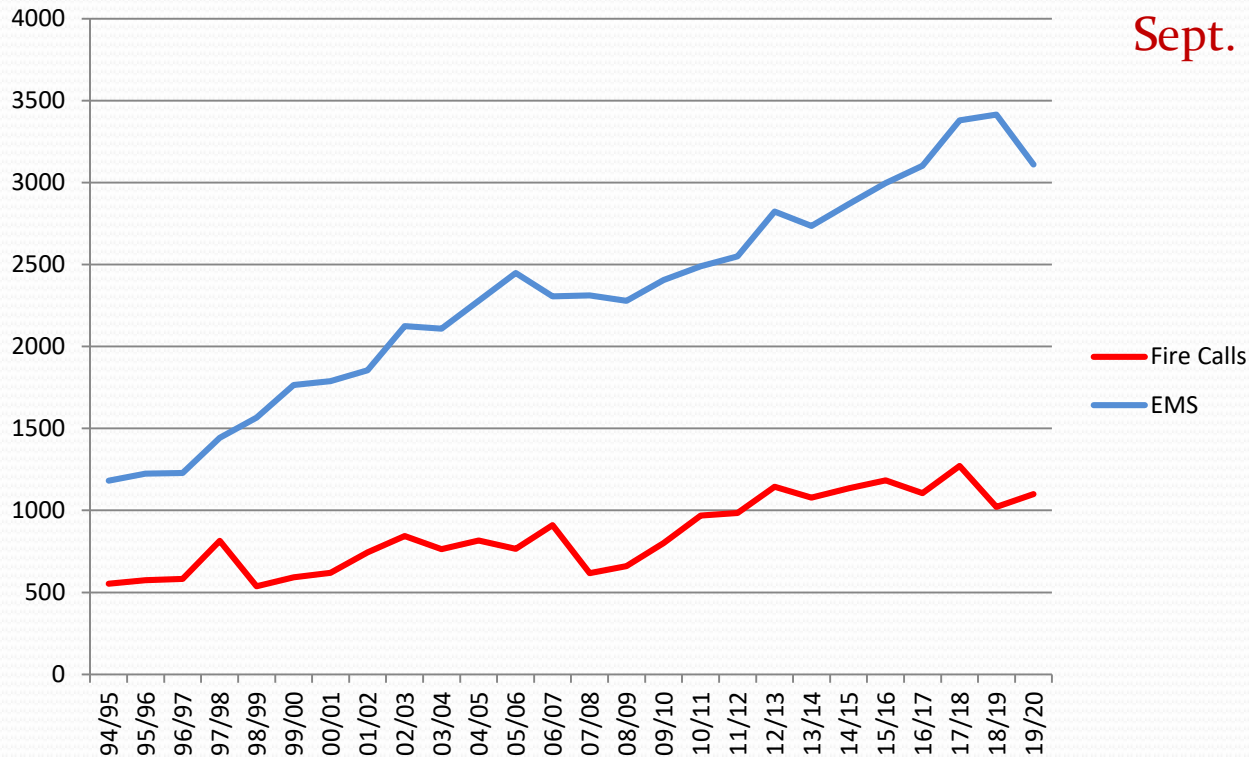
	FIRE	EMS
2011	969	2,490
2012	985	2,549
2013	1,044	2,823
2014	1,078	2,736
2015	1,134	2,867
2016	1,184	2,997
2017	1,105	3,103
2018	1,271	3,379
2019	1,021	3,415
2020	1,099	3,110



Prior 90 thru 1998 7 on a shift

Aug 99 went to 8 on a shift

Sept. 2019 went to 9 on a shift

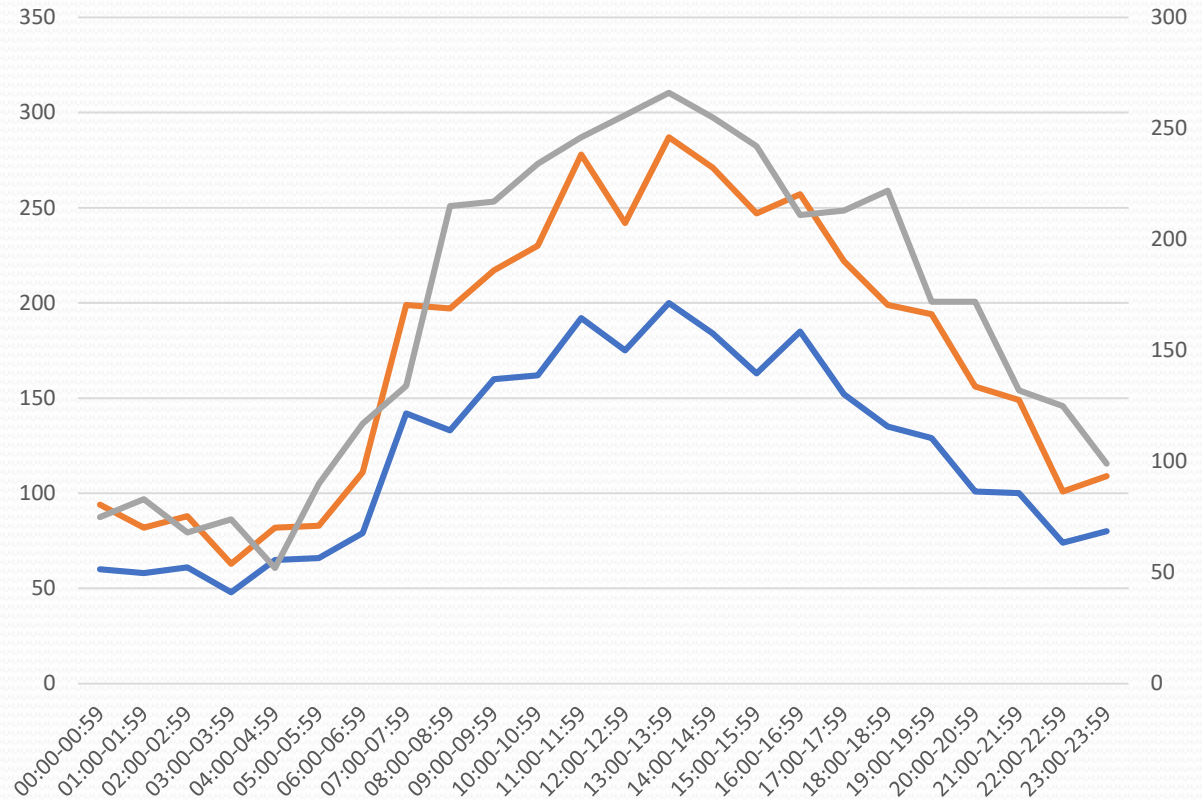


The Drop in EMS calls were from COVID over 2-3 month period



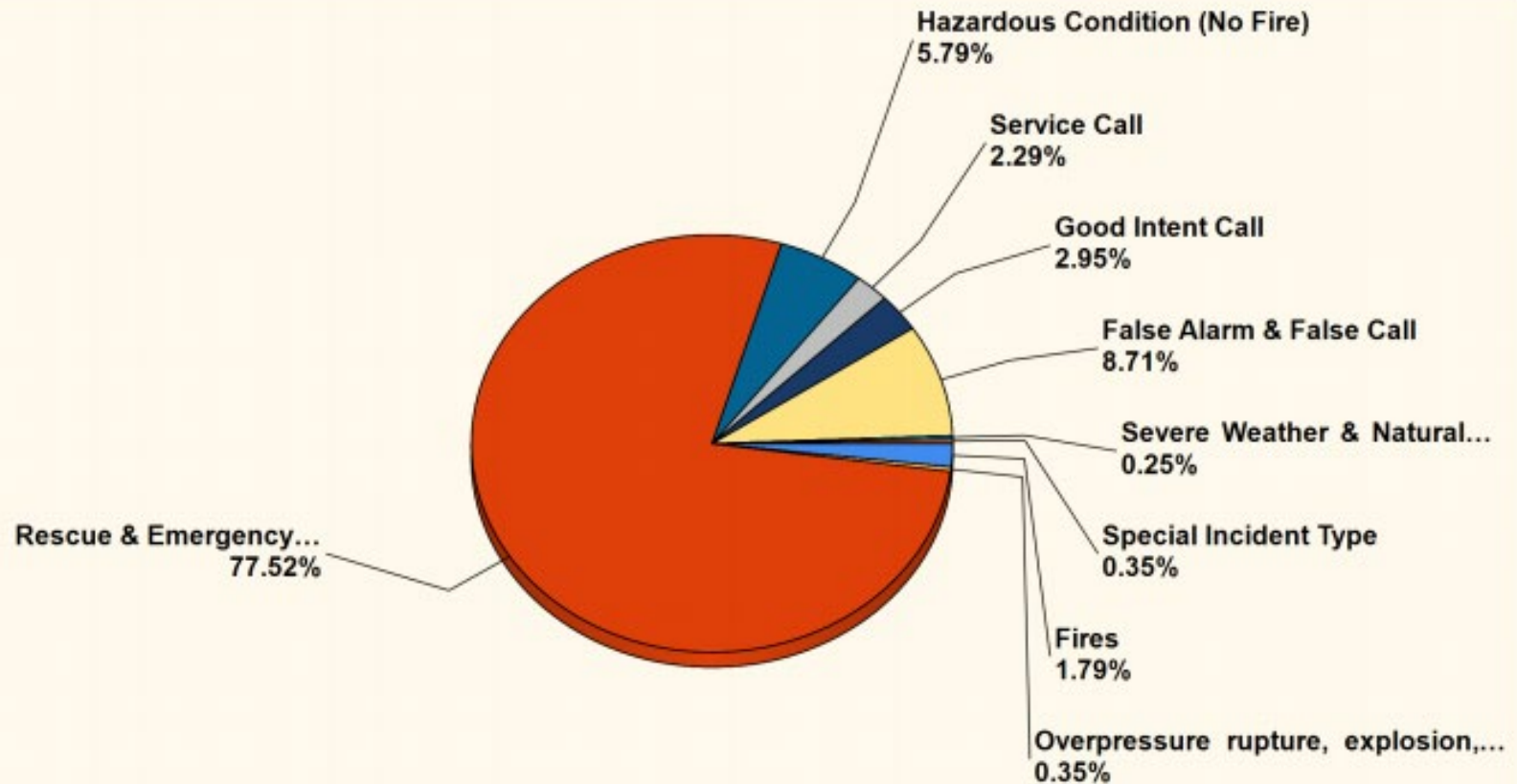
Calls for Service by hour of the Day

HOUR	2018	2019	2020
00:00 - 00:59	60	94	75
01:00 - 01:59	58	82	83
02:00 - 02:59	61	88	68
03:00 - 03:59	48	63	74
04:00 - 04:59	65	82	52
05:00 - 05:59	66	83	90
06:00 - 06:59	79	111	117
07:00 - 07:59	142	199	134
08:00 - 08:59	133	197	215
09:00 - 09:59	160	217	217
10:00 - 10:59	162	230	234
11:00 - 11:59	192	278	246
12:00 - 12:59	175	242	256
13:00 - 13:59	200	287	266
14:00 - 14:59	184	271	255
15:00 - 15:59	163	247	242
16:00 - 16:59	185	257	211
17:00 - 17:59	152	222	213
18:00 - 18:59	135	199	222
19:00 - 19:59	129	194	172
20:00 - 20:59	101	156	172
21:00 - 21:59	100	149	132
22:00 - 22:59	74	101	125
23:00 - 23:59	80	109	99

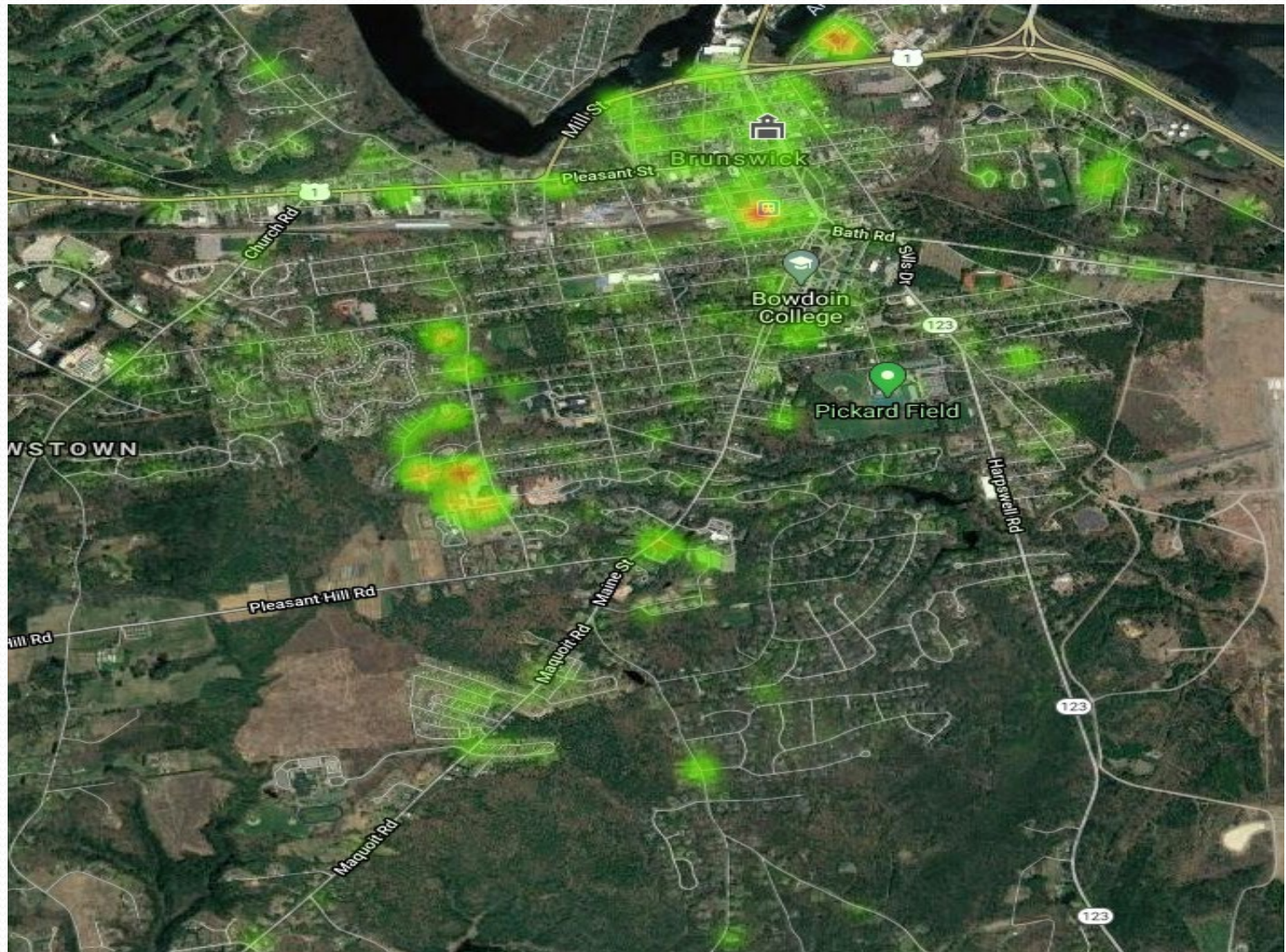


Most activity Starts between 4 and 5 a.m. Goes to between 10 and 11 p.m.

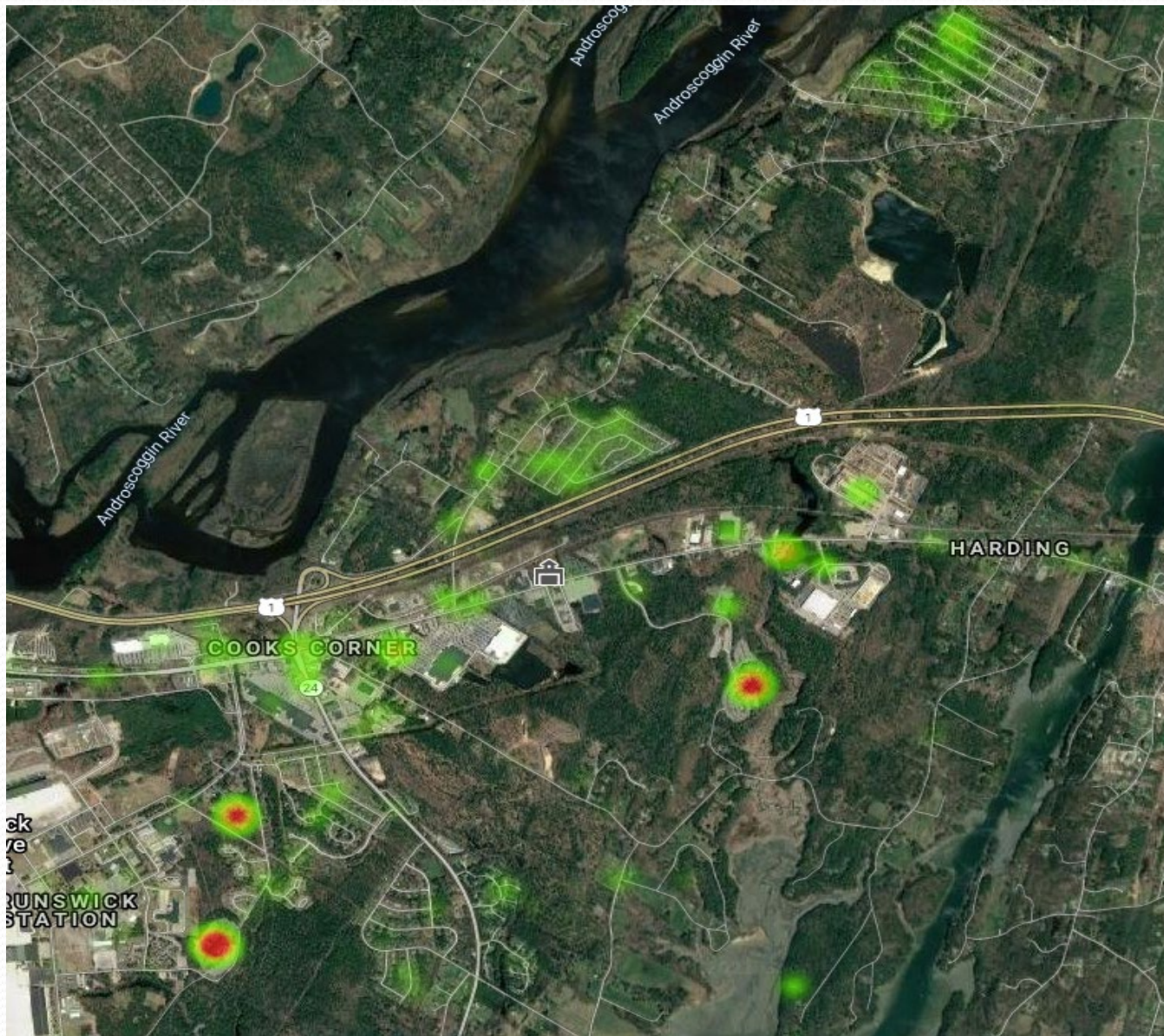
Breakdown by Major Incident Type FY 2019-2020



Heat Map of the Central Station District



Heat Map of the Emerson Station District



STAFFING COMPARISON

Municipality	Population	Calls	Sq Miles	Firefighters	FF's/1,000	Per diem
Auburn	23,052	5,016	65	64	2.8	
So. Portland	25,483	4,765	12	68	2.7	
Augusta	19,136	6,603	55	48	2.5	
Biddeford	21,282	5,158	30	42	2.0	
Sanford	20,893	3,916	47	45	2.2	
Westbrook	18,730	4,300	17	42	2.2	24
Saco	19,485	3,703	38	36	1.8	
Brunswick	20,645	4,209	46	36	1.7	
Scarborough	20,023	4,011	47	32	1.6	86

Sq. Miles Does Not include water area



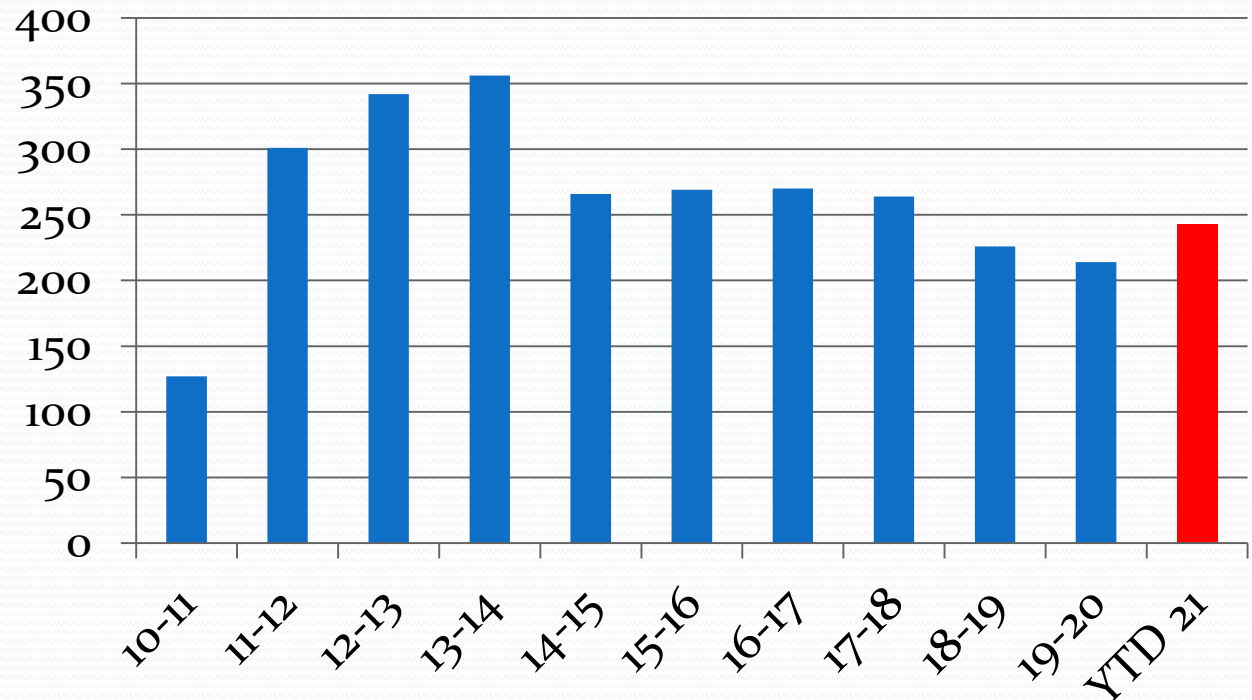
Request 4 New Firefighters

- Goal is 10-12 on shift
 - Overall have seen steady increase in call volume over 20 years
 - Not Getting Callback personnel for station coverage
 - Used to have 30-40 call FF's
 - NAS Fire had 21 on a shift, Engine company of 4 whenever we needed it
 - Multiple over lapping calls
 - FY 18 1081 overlapping calls, 33.35%
 - FY 19 1446 overlapping calls, 34.78%
 - FY 20 1272 overlapping calls, 32.02%
 - Transporting EMS Patients to out of town hospitals
 - FY 18 159
 - FY 19 193
 - FY 20 203
 - YTD 155
 - Longer transport and turn around time.
 - EMS Protocol changes requiring more people for long periods of time
 - Every Department seeing more mutual Aid requests
 - Brunswick Landing more area and more buildings (FY 20 did 447)

Inspections

2010-11	127
2011-12	301
2012-13	342
2013-14	356
2014-15	266
2015-16	269
2016-17	270
2017-18	264
2018-19	226
2019-20	214

Inspections



Inspector started February 2020

BUDGET BREAKDOWN

Operations

→ \$629,350.00

Salaries

\$2,732,698.00

Benefits

→ \$1,242,034.00

- Salaries
- Benefits
- Operations

Salaries – Current \$2,503,780.00

Requested \$2,732,698.00

Includes request for new personnel

Benefits – Current \$1,122,030.00

Requested \$1,242,034.00

Operations – Current \$530,260 (includes Central and Emerson Station budgets)

Requested \$629,350.00 (includes Central and Emerson Station Budgets)

This also includes Capital equipment and Fire Prevention

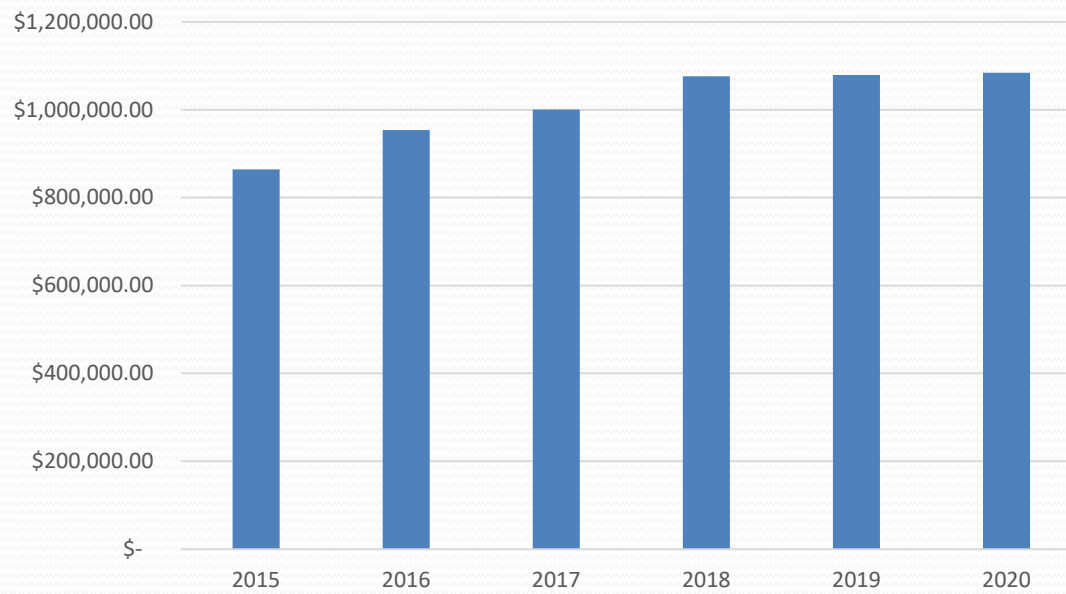


REVENUES

	2016-17	2016-17	2018-19	2019-20
Fire Code Permits	\$ 2,425.00	\$ 1,795.00	\$ 2,300.00	\$ 3,520.00
Ambulance Fees	\$ 1,000,396.77	\$ 1,076,057.86	\$ 1,079,235.10	\$ 1,084,171.69
Special Details	\$ 1,095.42	\$ 2,216.50	\$ 969.66	\$ 726.12
False Alarm, Fire	\$ -			
EMA Planning Grant	\$ 3,146.39	\$ 3,143.90	\$ -	
Fire Code Violations				100
Fire Miscellaneous	\$ 1,671.70	\$ 154.00	\$ 4,560.01	\$ 630.00
	\$ 1,008,735.28	\$ 1,083,367.26	\$ 1,087,064.77	\$ 1,089,147.81

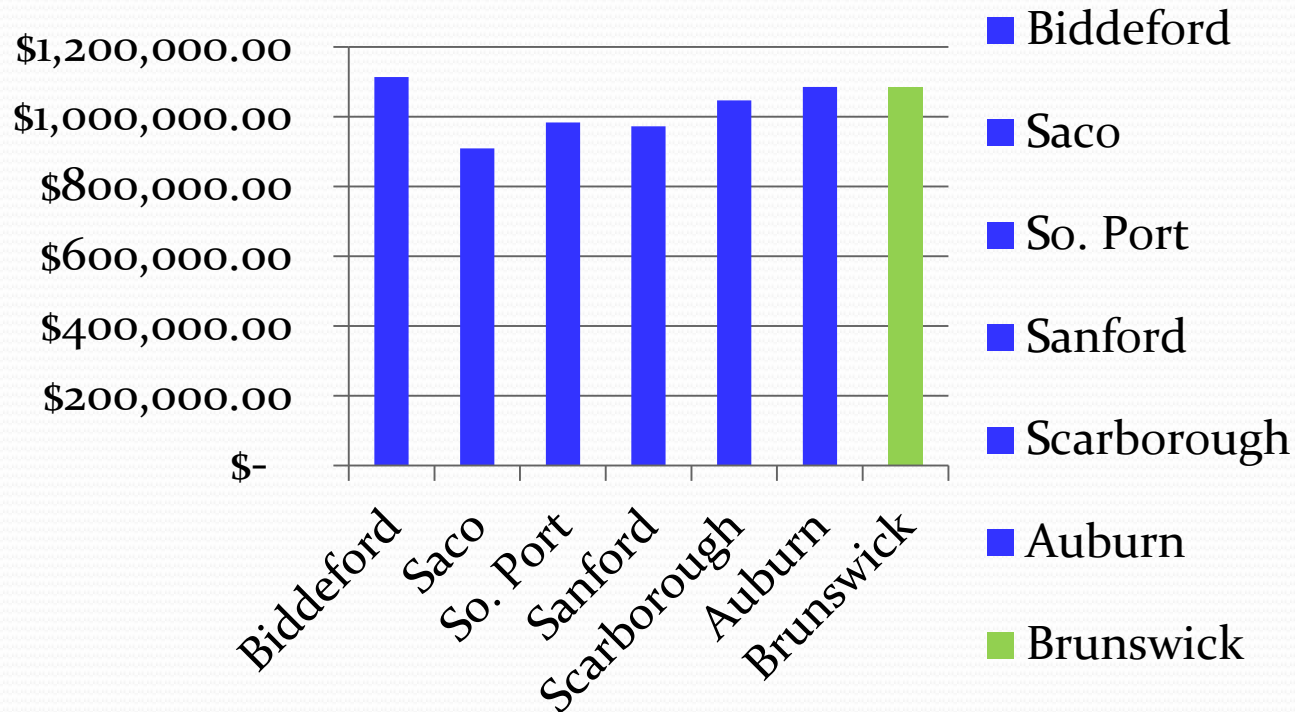


Ambulance Revenue



Similar Departments Comparisons

Ambulance Billing



Mutual Aid

	EMS	Fire
Given	53	30
Received	20	9

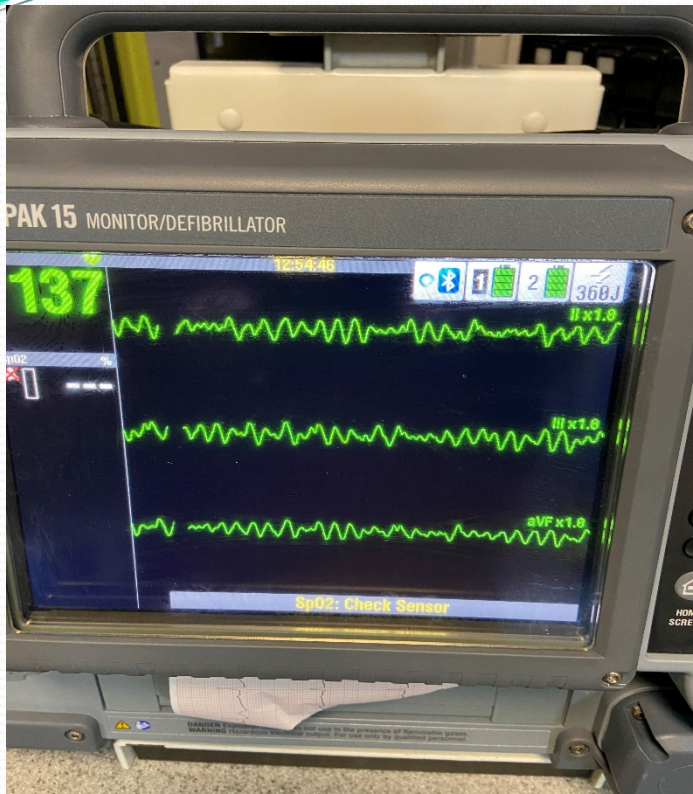


CIP Request

Cardiac Monitors

- We have 4 Cardiac monitors
- Newest is 1 1/2 yrs old.
- 3 are version 1 or 2 and some critical parts no longer available





One of the most used pieces on the Rescue

- Cardiac
- Respiratory
- Unk medical issues
- Anytime we give meds
- Multi systems Trauma
- Overdoses

NOT just for monitoring heart rhythm



Carbon Dioxide

Oxygen Level

Blood pressure

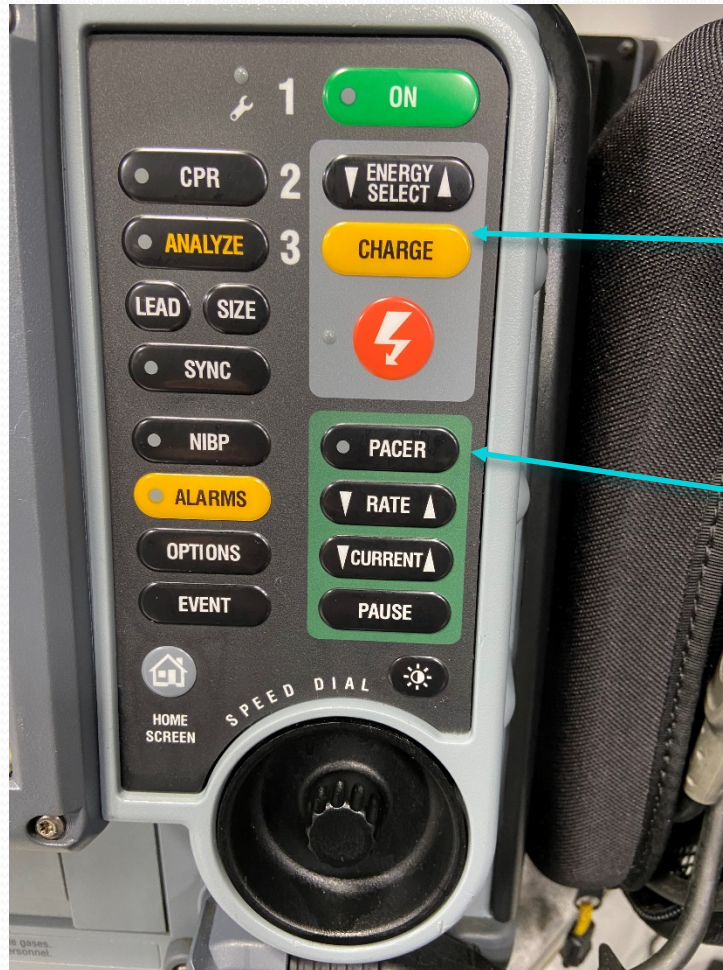
Electro Cardio Gram (ECG)



12 Lead

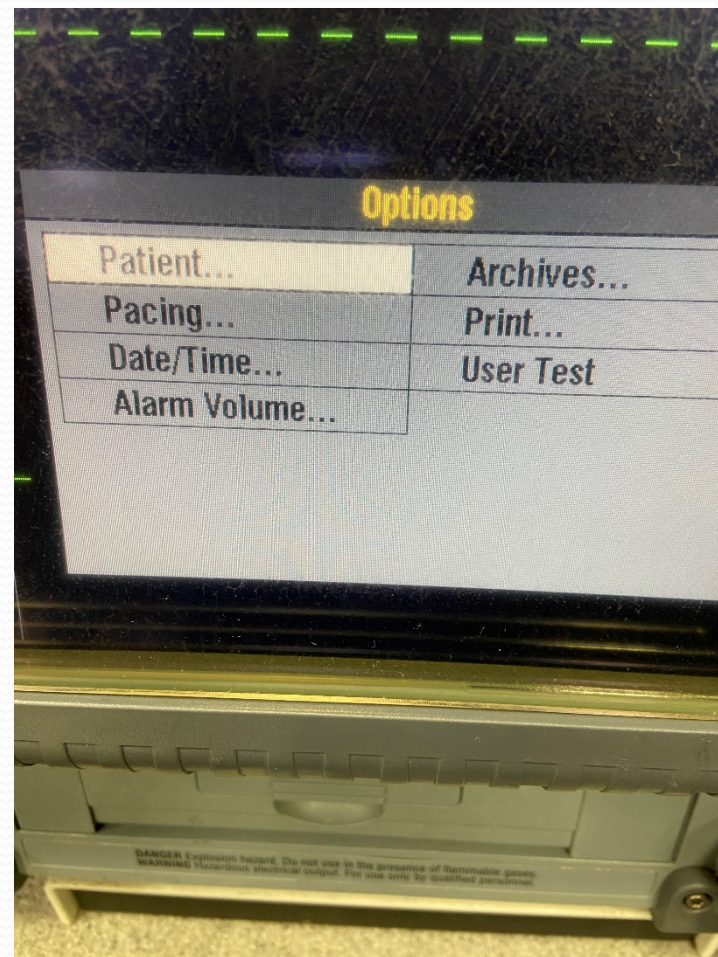
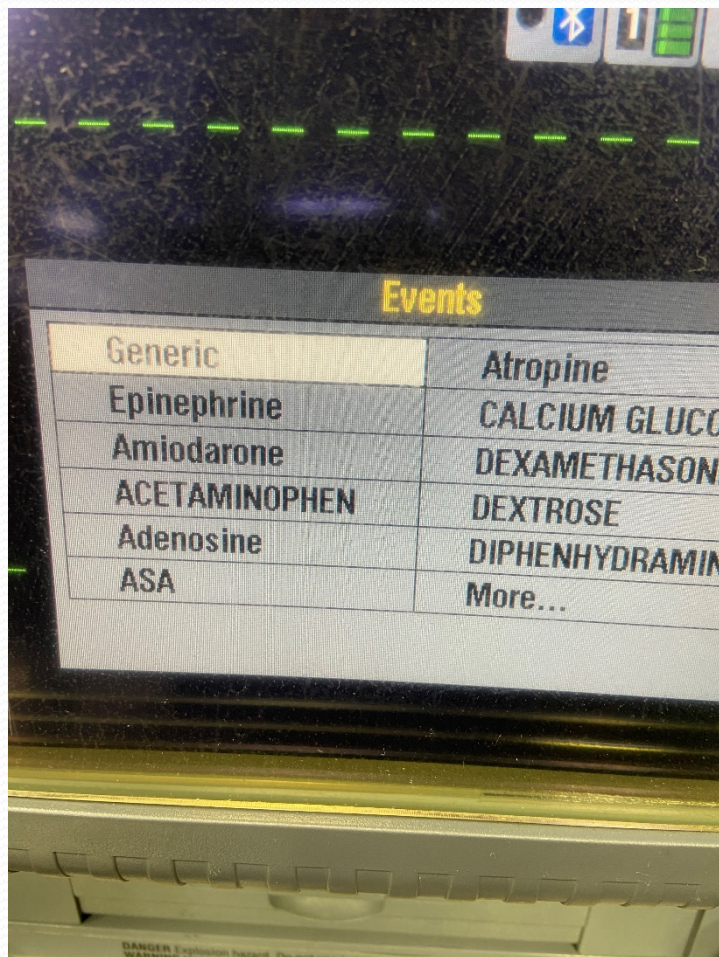
Import Call Info

Code Summary



Defibrillation and/ or
Cardio version

Pacing



CHALLENGES

1. Continued increase in costs, both Personnel and Operational
2. Increase in calls for service continues to stretch our current resources
 1. STAFFING
 - a. Has not kept up with the increase in calls over 20 plus years
 - b. Difficult when covering 2 stations
 - c. Changes with Maine EMS Protocols require more personnel on certain types of calls
3. Brunswick Landing, as more buildings come on-line and increased use of the area
4. With increased call volume training on duty becoming more and more difficult

