

Brunswick Parks and Recreation

Fall 2025

Programming

(September thru December)



Brunswick
maine
Parks and Recreation



207-725-6656

recprograms@brunswickme.gov

Parks and Rec Staff

Thomas M. Farrell

Director

tfarrell@brunswickme.gov

Sabrina Best

Deputy Director

sbest@brunswickme.gov

Dennis Wilson

Parks and Facilities Manager

Town Arborist

dwilson@brunswickme.gov

Brittany Geffre

Financial Administrative
Assistant

bgeffre@brunswickme.gov

Aaron Cropley

Recreation Program Manager

acropley@brunswickme.gov

David Coffill

Program Assistant

dcoffill@brunswickme.gov

Laurie Grinnan

Fitness and Facility Coordinator

lgrinnan@brunswickme.gov

Averill Erdody

Marketing, Sponsorships, &
Communications Manager

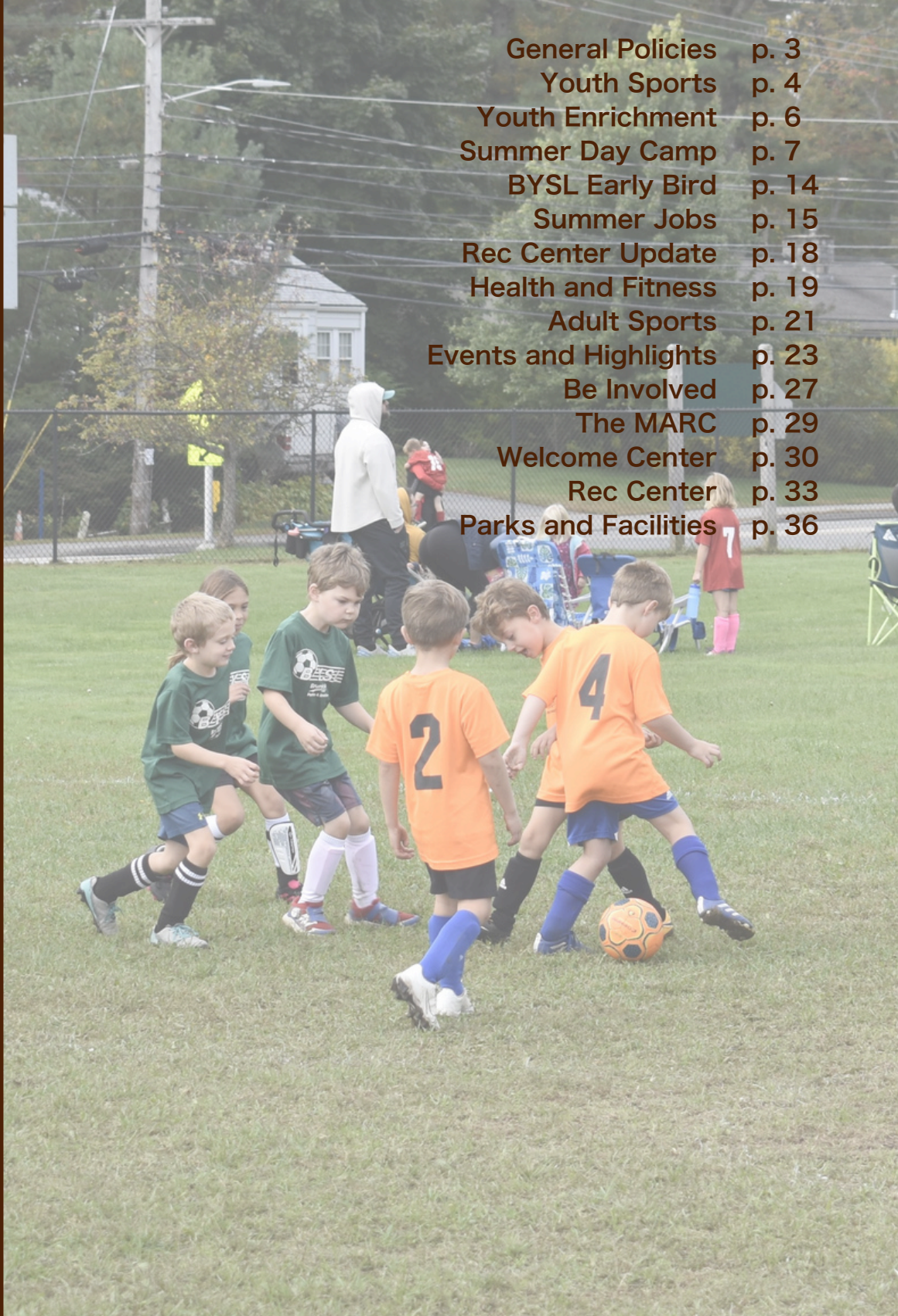
aerdody@brunswickme.gov

Welcome Center

Jonathan Francois

francois@ircofmaine.org

General Policies	p. 3
Youth Sports	p. 4
Youth Enrichment	p. 6
Summer Day Camp	p. 7
BYSL Early Bird	p. 14
Summer Jobs	p. 15
Rec Center Update	p. 18
Health and Fitness	p. 19
Adult Sports	p. 21
Events and Highlights	p. 23
Be Involved	p. 27
The MARC	p. 29
Welcome Center	p. 30
Rec Center	p. 33
Parks and Facilities	p. 36



Recreation Center
Fall Hours
(starting 10/4)

Mon-Fri 6am-8pm
Saturday 7am- 6pm
Sunday 8am-4pm

Online Registration
CivicRec

secure.rec1.com/ME/brunswick-me/catalog



Follow us on Social Media!



BrunswickParksandRec

General Policies

Registration: Registration can occur either online at www.brunswickme.gov/parks-recreation, in person at the Recreation Center, and over the phone. Full payment is required at the time of registration for classes.

Residents: Participants who live in Brunswick.

Non-Residents: Participants who do not live in Brunswick must pay 33% more per registration.

Confirmations: We do not send confirmations or reminders of enrollment. If you register for a program, you are responsible for knowing class dates, times, and location.

Discounts: Sibling discounts are available for Brunswick Youth Soccer League and Summer Camp.

Refund Policy: Brunswick Parks and Recreation seeks to provide high quality facilities and program opportunities for leisure time activities for all Brunswick residents. The fees collected through these programs go directly toward the cost of operations. This allows us to keep our rates fair while still delivering high-quality services. In many cases, expenses are incurred prior to the start of a program, which is why we have outlined the refund policy below. **All refunds will be automatically processed to the primary account holder's account. We do not provide cash refunds.**

- **If we cancel a program**, all fees will be refunded. If a program does not take place due to cancellation by Parks and Rec staff, all registration fees will be refunded in full as credit on account unless a refund check is requested. If a refund check is requested when staff cancels the program, there will be no processing fee if the request is made within 14 days of the cancellation.
- **If you withdraw** before the first session of a program (excluding weekends and holidays), you will receive a full refund (less a \$15 processing fee). Example: If a program is scheduled to begin on a Wednesday at 5pm, to receive a full refund

(minus the processing fee), you must withdraw before Wednesday at 5pm. To further clarify, withdraw means a communication with staff via phone, voicemail, email, or in person.

- **For one-day special events**, you must withdraw prior to the start of the program to receive a full refund (less a \$5 processing fee). There will be no refunds issued for requests after the one-day event occurred.
- If you are **dissatisfied** with a program after the first class, you must let the staff know before the second class of the session to receive a refund.
- In the event of an **extended illness or injury**, we will issue a prorated refund, if the program has started. We may request written notification.
- All refund requests must be received before the last session of the program. **Refunds will be denied for programs that have ended**, even if you were dissatisfied with the program or did not attend.
- If you withdraw on (or after) the day of the second session, no refund will be issued.
- **Summer Camp Refund Policy;** Prorated refunds may be issued if your camper is asked to withdraw. Prorated refunds will be calculated by week, so if your child attends Monday, then the full week will count as attended.
- **Fitness Membership Refund Policy;** memberships are non-refundable. Refunds are generally only provided in exceptional circumstances, like medical issues, and may require proper documentation.
- **All refunds will be automatically processed as a credit to the primary account holder's account.** If a refund check is requested it will take 14-21 days to process. If a refund check is requested for a cancellation made by a participant, there will be a \$15 processing fee. If a refund check is requested when staff cancels the program, there will be no processing fee if requested within 14 days of the cancellation.

CELL PHONE POLICY

- Patrons are allowed to use cell phones for music and fitness-oriented apps while wearing headphones or earbuds.
- We ask patrons to NOT use technology to photograph or videotape anywhere in the Fitness Center.
- In addition, we DO NOT PERMIT conversational phone use, facetime, or any other video conversations in the Fitness Center.
- Please refrain from scrolling through social media, texting, or taking selfies in between sets while others are waiting to use equipment in Fitness Center.



Brunswick Youth Soccer League

The Brunswick Youth Soccer League (BYSL) is a popular, community-based program designed for youth entering grades K-8 who live in Brunswick. The league's goals are to teach soccer skills in an environment that fosters player growth, encourages fun, and develops self-esteem for every player.

There is a \$5 sibling discount available for each additional sibling registered.

Grades: K-8 (as of Fall 2025)

Team Placement: Notification by September 5, 2025

First Week of Practices: September 8 (Divisions 2-8)

Practice and Game Schedules: Provided by coaches

First Game: Saturday, September 13 8am-1:00pm

Locations: Harriet Beecher Stowe School, and Shulman, Lishness and Edwards Fields

Picture Day: September 27

Last Day of Games: Saturday, October 25

Coordinator: Dave Coffill, dcoffill@brunswickme.gov

Soccer League for K and Grade 1 (Co-Ed Division for K and Grade 1) \$65

Youth in Kindergarten and first grade will participate in BYSL's co-ed "Kids on the Pitch," a fundamental program with coaches who focus on teaching the basics of soccer through stations and drills followed by fun scrimmages. This program meets on Saturdays (no weekday practices), and players receive a team shirt at registration.

Soccer League for Grades 2 and 3 (Separate Divisions for 2-3 Boys and 2-3 Girls) \$75

Youth in Grades 2-3 will be placed on separate teams with a coach and have one weekday practice and one Saturday game. Participants receive a team shirt at registration and a soccer ball at the end of the season. Players are required to provide their own shin guards and socks. A mouth piece is optional and cleats are not needed at this age.

Soccer League for Grades 4 and 5 (Separate Divisions for 4-5 Boys and 4-5 Girls) \$85

Youth in Grades 4-5 will be placed on separate teams with a coach and have one weekday practice and one Saturday game. This division will get two extra weeknight games under the lights! Participants receive a team shirt at registration and a soccer ball at the end of the season. Players are required to provide their own shin guards and socks. A mouth piece is optional and cleats are encouraged but not required at this age.

Soccer League for Grades 6, 7 and 8 (Co-Ed Division for 6-8) \$90

Youth in Grades 6-8 will be placed on co-ed teams with a coach and have one weekday practice and one Saturday game. This division will get two extra weeknight games under the lights! Participants receive a team shirt at registration and a soccer ball at the end of the season. Players are required to provide their own shin guards and socks. A mouth piece is encouraged and cleats are strongly recommended at this age.

Youth Sports Programs

Start Smart Soccer

This program teaches children the basic motor skills necessary to play organized soccer while they work one-on-one and spend quality time with their trusted adults. The skills focused on include kicking, dribbling, and running/agility skills without the threat of competition or the fear of getting hurt.

Ages: Ages 3-5 as of the start of the program

Dates: Tu/Thurs. September 9 - 25

Time: 4:00-4:45pm **OR** 5:00-5:45pm

Location: Harriet Beecher Stowe Field

Fee: \$70 Residents / \$90 Non-Residents

Instructor: Anthony 'Coach Ant' Martin

Coordinator: Dave Coffill, dcoffill@brunswickme.gov

Wrestling Clinic

Ever wanted to try out wrestling? Looking to hone your wrestling skills? Come join us for six evening clinics in April. Any ability is welcome. Bring your wrestling gear if you have some. Emphasis will be placed on safety, rules, learning, strategy, and fun! All abilities and experience levels are welcomed. Each wrestler will be matched with a child of similar weight.

Participants will be split into two age groups

Ages: 5-9 as of November 1, 2025

Dates: Tu/Thurs. Nov. 4th - Nov. 25th

Time: 5:00pm - 6:00pm

Location: Brunswick Recreation Center

Fee: Brunswick Residents \$51; Non-Residents \$68

Instructors: Jeff Dolley, Richard Chipman Donald Hyde

Coordinator: Aaron Cropley, acropley@brunswickme.gov

Little Striders

Specifically designed as a FUN, positive introduction to the joy of running, program sessions will be limited to a half hour to help keep kids engaged and wanting to run. Emphasis will be placed on an appropriate low-volume, low-intensity training schedule and having fun.

Grades: K

Dates: Mondays, September 8-29

Time: 5:00pm-5:30pm

Location: Brunswick Recreation Center

Fee: \$60 Brunswick Residents / \$80 Non-Residents

Instructor: Becca Fisk

Coordinator: Aaron Cropley, acropley@brunswickme.gov

Special Olympics Maine Development Soccer

This is a soccer program for youth who experience disabilities of physical, social, communicative, and/or cognitive challenges! Children participating will be supported by a parent or guardian familiar with the child (at least 18 years old) and will work together with the assistance of an instructor and other volunteers to learn the basics of soccer broken down into simple steps so all have a framework to teach and learn.

Grades: K-8

Dates: Saturdays, September 13 - October 18

Time: K-5th grade 1:00pm-1:45pm

6-8th grade 2:00pm-2:45pm

Location: Harriet Beecher Stowe Field

Instructor: Haley Bernier, a State of Maine certified special education teacher and holds a Behavioral Health Professional Certification

Coordinator: Dave Coffill, dcoffill@brunswickme.gov

Youth Pickleball

Want to learn the fine art of the lob shot and overhead smash? Take weekly lessons on how to play the wildly popular game of pickleball. Limited to 12 players.

Grades: 6-8

Dates: Mondays, Oct 20 - Nov 24

Dates: Mondays, Feb 10 – Mar 24

Time: 4:00pm-5:30pm

Location: Brunswick Recreation Center

Fee: Brunswick Residents/\$40; Non-Residents/\$54

Instructors: Richard Cromwell and Linda Noddin

Coordinator: Dave Coffill, dcoffill@brunswickme.gov

Cross Country Running Club

Children will learn the fun and satisfaction of running through weekly practices, along with "Fun Runs" on Wednesdays and a championship meet.

1st and 2nd graders / half-mile

3rd and 4th graders / three quarters of a mile

5th graders / one mile

Grades: 1-5

Dates: Mondays, September 15 to Saturday, October 19

Time: 5:30pm-6:30pm

Location: Brunswick Recreation Center and Various Locations in Southern Midcoast Maine

Fee: \$75 Brunswick Residents Only

Instructor: Becca Fisk

Coordinator: Aaron Cropley, acropley@brunswickme.gov

Youth Sports Programs

FUNDamentals of Field Hockey K-2

The program is a can't miss for any field hockey enthusiast or child who would like to try out a new sport! Players focus on the basic rules of field hockey, proper grips, ball and stick control, passing and receiving, and fun games/scrimmages. Parents/guardians are requested to stay at the field during each practice. Equipment is available to borrow if needed.

Maximum Enrollment: 15

Please bring: stick, mouth guard, field hockey shin guard, water bottle, sneakers.

Ages: Grades K-2, as of Fall 2025

Dates: Wednesdays, September 10-October 8

Time: 4:45pm-5:30pm

Location: Brunswick Junior High School

Fee: \$70 Residents / \$93 Non-Residents

Instructor: Ally Feltis

Coordinator: Aaron Cropley, acropley@brunswickme.gov

Field Hockey Clinics/Team Grades 3-6

This program provides an opportunity for new and developing players to learn and improve their field hockey skills and knowledge of the game. The team will participate in scrimmages against other towns that will prepare them for two end of season play day events. The full season schedule including games and play days will be provided at the first practice. Some scrimmages will be held in Brunswick, and some will be in the surrounding towns.

While participation in scrimmages and playdays is encouraged it is not required.

Maximum Enrollment: 20

Please bring: stick, mouth guard, field hockey shin guards, water bottle, sneakers.

Grades: 3-6th grade, as of Fall 2025

Dates/Time/Location:

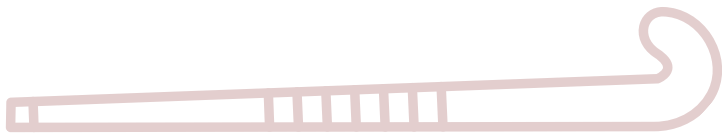
Tuesdays, September 9 - October 28, HBS from 3:30-4:30pm

Fridays, September 12 - October 28, BJHS from 4:00pm-5:00pm

Fee: \$35 Residents/ \$47 Non-Residents

Instructors: Hilary Clayton and Brittany Peters

Coordinator: Aaron Cropley, acropley@brunswickme.gov



Youth Basketball League

Youth Basketball Grades 3-8

Experience the fun and excitement of playing basketball! Youth basketball emphasizes the development of fundamental basketball skills and positive youth sports values such as teamwork, respect, and sportsmanship. The program consists of one 1-hour weeknight practice and one Saturday game each week. Equal playing time is one of the goals of the program.

Your child is expected to participate in a scrimmage/evaluation night at Brunswick Rec Center Gym on the date listed below. Players will be placed in groups and scrimmage in order for Recreation staff to assess the experience and skill level of players as they attempt to form balanced teams. Participation is important for the creation of fair and evenly balanced teams!

Registrations must be processed by Friday, December 5

Scrimmage Evaluation Nights at The Brunswick Rec Center Gym:

Grades 3-4: November 11

Scrimmage times: Girls 5:30-6:15pm and Boys 6:30-7:15pm

Grades 5-6: November 12

Scrimmage times: Girls 5:30-6:15pm and Boys 6:30-7:15pm

Grades 7-8: November 13

Scrimmage time: 6:00-7:00pm (coed)

Please indicate during registration if there is a potential conflict in your family's schedule that needs to be considered for team placement and practices!

Teams are put together based on careful evaluations to make them fair and balanced.

Unfortunately, we cannot accommodate requests to change teams.

Important Dates:

Coaches Meeting: Wednesday, November 19 at 5:30pm, Brunswick Recreation Center

Team Placement: You will be notified starting Friday, November 21 by the team coaches

First Week of Practices: Week of December 1

Practice and Game Schedules: Will be provided by coaches during practices the week of December 1

First Game: Saturday, December 6 (No games Dec. 27) Games will be played through Saturday, Jan. 24

Basketball League for Grades 3/4

\$80 Brunswick Residents/ \$106 Non-Residents

Players in grades 3-4 will play in separate gendered divisions and will have one 1-hour weekday practice and one Saturday game. Players will receive a reversible jersey prior to the first day of games.

Basketball League for Grades 5/6

\$95 Brunswick Residents/ \$125 Non-Residents

Players in grades 5-6 will play in separate gendered divisions and will have one 1-hour weekday practice and one Saturday game. Players will receive a reversible jersey prior to the first day of games. If there are insufficient numbers to support two leagues, we will combine to form a coed league in order to give everyone an opportunity to play!

TEAMS IN THIS LEAGUE WILL COMPETE AGAINST REC TEAMS FROM BATH AND FREEPORT — Games will be played at the Brunswick Recreation Center, Freeport Middle School, Durham Central School, and Woolwich Central School

Basketball League for Grades 7/8

\$95 Brunswick Residents/ \$125 Non-Residents

Players in Grades 7-8 will be placed on combined teams and will have one 1-hour weekday practice and one Saturday game. Players will receive a reversible jersey prior to the first day of games.

Coordinator: Dave Coffill, dcoffill@brunswickme.gov

Youth Travel Basketball League



2024 Girls 5th grade Travel Team

5-6 Grade Travel Basketball

Brunswick Parks and Recreation will enter a 5th grade boys, 5th grade girls team, 6th grade boys, and 6th grade girls team in the Southern Maine Hoops Basketball League. Limited to Brunswick residents and students of Brunswick public schools only, all games will be played on Saturdays or Sundays. You must tryout and be selected to participate in this program. Tryouts are free.

Tryout Location: Harriet Beecher Stowe School Gym

Boys—Tuesday, October 21

5th Grade - 5:00-6:15pm

6th Grade - 6:15pm-7:30pm

Girls—Wednesday, October 22

5th Grade - 5:00-6:15pm

6th Grade - 6:15pm-7:30pm

Practice and Game Schedules: Will be provided by coaches

Practice Locations: Rec Center/HBS Gym

First Game: Week of November 16 (subject to change)

Fee: \$225 for players selected, try-outs are free and must be attended

Coordinator: David Coffill, dcoffill@brunswickme.gov

Youth Enrichment

Mad Science Science Surprise!

In this program, kids learn about several specialized areas of science, including forensics, geology, meteorology, entomology, and mechanical engineering. They gain foundational science knowledge that will help them in their future science endeavors.

Grades: K-5

Dates: Thursdays, October 9 - Dec 4 (No Class on 10/2)

Time: 3:50pm-4:50pm

Location: Harriet Beecher Stowe School

Note: Kids attending HBS can be dismissed and will be escorted to the cafeteria immediately after school ends and will be supervised until the start of the program.

Transportation is not provided from any other schools or locations for this program. A permission slip must be signed if your young scientist will be staying after school for the program.

Coordinator: Aaron Cropley
acropley@brunswickme.gov

FREE DEMO: Is taking place on Thursday October 2 at 6PM at HBS. If you are interested in signing up please email program coordinator, Aaron Cropley.



Afterschool Club

This program runs throughout the school year and offers various games and activities, including: homework help, STEM projects, gym games, arts and crafts, and playground time!

Grades: 3-5

Dates: September 8, 2025 through June 16, 2026

Time: 3:00 (end of day dismissal) - 5:00pm

Early Release Days: 12:15pm - 5:00pm

Location: Harriet Beecher Stowe School

Fee: Varies with number of days the program runs each month. \$15/day for each day program is held. Not held on days that school is not held or after school activities are cancelled.

Instructor: Cherie Viscardi and Brunswick Rec Staff

Coordinator: Aaron Cropley acropley@brunswickme.gov

Youth Hip Hop Dance

Kids will get up and MOVE to their favorite tunes in this program where they'll learn trending hip-hop choreography and technique, while developing their understanding of rhythm, body awareness, and self-expression!

Grades: 2-5

Session I, Fall: Mondays, Sept. 8-Oct. 20 (No class Oct. 13)

Session II, Fall: Mondays, Oct. 27-Dec. 8

Time: 4:00pm-5:00pm

Location: Harriet Beecher Stowe School Gym

Fee: \$90 Residents / \$120 Non-Residents

Instructor: Kate Andreu

Coordinator: Aaron Cropley acropley@brunswickme.gov

Tiny Tappy Toes – Tap and Ballet

Learn the basic techniques of tap, ballet and creative movement steps in this fun combo class. Dance teaches self confidence, balance, and coordination. Additionally, it keeps a child's mind and body working together.

Age: 3-6 (must be potty trained)

Session I, Fall: Mondays, Sept. 8-Oct. 20 (No class Oct. 13)

Session II, Fall: Mondays, Oct. 27-Dec. 8

Time: 5:15pm-6:00pm

Location: Harriet Beecher Stowe School Cafeteria

Fee: \$90 Residents / \$120 Non-Residents

Instructor: Kate Andreu

Coordinator: Aaron Cropley acropley@brunswickme.gov

Health and Fitness

All individuals registering for personal training must have a PRO membership.

Machines 101

Join us as we tour the cardio area and weight room. Get basic instructions on how to use your preferred machine or fitness equipment. Get your questions answered! Discuss the benefits of certain exercises and fitness program plans. We can also go over membership pricing and details, equipment questions, and future programming. Learn more when you register through one of the dates below. No cost.

Registration is required.

Dates: Sept: 10,17 Oct: 8,15,22 Nov: 12,19 Dec: 3,10,17

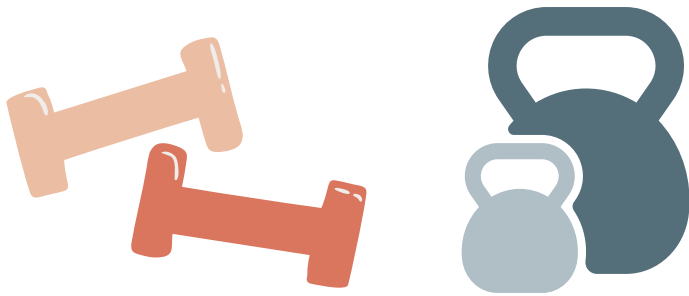
Dates subject to change

Time: 5:00 pm-6:00 pm

Location: Meet in the Lobby

Fee: Free

Coordinator: Laurie Grinnan, lgrinnan@brunswickme.gov



Fitness Assessment

Wondering where to start on your fitness journey?

Consider a 30-minute fitness assessment to equip you with all the tools to get started! [Learn more.](#)

Dates: Based off of client and trainer's availability

Time: 30 minutes

Fee: \$35

One-on-One Personal Training

This program is designed for a one-time session to meet with one of our personal trainers. For more info, click on session of interest.

Dates: Based off of client and trainer's availability

Location: Weight Room

Coordinator: Laurie Grinnan, lgrinnan@brunswickme.gov

1-1 Personal Training 1 Hour

Fee: \$60

1-1 Personal Training 2 Hours (\$10 saving)

Fee: \$110

Personal Training 3 Hours (\$30 saving)

Fee: \$150

Fitness Center Rules

- Participants must be at least 14 years old and accompanied by an adult at all times if under 16.
- Participants must report all injuries to BRC staff. In emergency, dial 911 before reporting to staff.
- Show respect for the equipment, facility, and towards others.
- Do not move or rearrange the equipment and/or exercise machines, unless otherwise permitted.
- No horseplay or loud offensive language will be tolerated.
- Please report any damaged or broken equipment to BRC staff immediately.
- Use a spotter when lifting heavy weights and please do not drop or throw the weights.
- Keep hands and loose clothes away from weight stacks, cables, and pulleys. Limit use of cardio machines to 30 minutes when others are waiting.
- Proper attire is required at all times. Please do not leave personal items lying around. Use provided locker area.
- Do not take pictures or videos of others without consent.
- Please use headphones when listening to music.
- Please clean up after yourself and wipe off equipment with provided materials after use.
- Track use is limited to walking and running only. Use clean non-marking gym shoes on courts, track, and exercise spaces.
- Consult your physician prior to engaging in physical activity.

For more info about our [fitness equipment](#) and offerings, please email our Fitness and Facility Coordinator, Laurie Grinnan lgrinnan@brunswickme.gov

Fitness Center Equipment

The Strength Room features the strength and conditioning equipment listed below:

Matrix Ultra Dependent Arm Curl
Matrix Ultra Back Extension
Matrix Ultra Converging Chest Press
Matrix Ultra Diverging Lat Pulldown
Matrix Ultra Leg Extension
Matrix Ultra Leg Press
Matrix Ultra Rear Delt / Pec Fly
Matrix Ultra Diverging Seated Row
Matrix Ultra Converging Shoulder Press
Matrix Ultra Triceps Press
Matrix Ultra Hip Adductor/Abductor
Matrix MG Lat Pulldown
Matrix MG Seated Row

Matrix MG Vertical Bench Press
Matrix Aura Lat Pulldown
Matrix MG-PL62 Smith Machine
Magnum VKR w/Chin
Matrix Aura 5-Stack Multi-Station
Matrix Aura 4-stack Multi-Station
Matrix Aura - Adjustable Cable Crossover
Matrix Aura Seated Row
Matrix Aura - Triceps Pressdown
Magnum Full Power Rack
Connexus Stability Step
Kettlebells, Slamballs, Strength Bands, Resistant Tubes, Free Weights, Tri Plyo Box, and Sled with moveable parts



**\$20/mo for
Brunswick
residents**

**Pro Members
have access to
strength and
cardio areas.**

Our Cardio Area includes a stretching and yoga area and the cardio machines listed below:

4 Rowing Machines
2 Performance Climbmills with Touch Console
5 Performance Treadmills with Touch Console
4 Performance Elliptical Trainers with Touch Console
2 Performance Recumbent Cycle with LED Console
2 Performance Upright Cycle with LED Console
2 Schwinn Air Bikes with LED Console
1 Hand Bike
1 Ski Erg



For pro membership information, including discounts, please email our Fitness and Facility Coordinator, Laurie Grinnan, lgrinnan@brunswickme.gov or call 207-725-6656.

Adult Sports and Leagues

Round Robin Pickleball Tournament

The indoor Round Robin Pickleball Tournament is a fun, competitive event where everybody plays with and against somebody random! Round Robin Tournaments will be held monthly and all proceeds will go towards Brunswick Parks and Recreation Department Pickleball programming! Pre-registration is required.

Time: 5:30pm

Dates: Fridays: October 24, November 28, December 26

Location: Brunswick Recreation Center

Fee: \$30/team

Coordinator: Dave Coffill, dcoffill@brunswickme.gov

Intro to Pickleball Lesson

Looking to learn more about the fastest growing sport in the country? Join the fun! No experience necessary. We have a selection of paddles and pickleballs for players to use during the indoor session.

Days/Times: Tues. 4:30-6pm/Thurs. 1-2:30pm

Location: Brunswick Recreation Center

Fee: \$10/Brunswick Residents \$13/Non-Residents

Coordinator: Dave Coffill, dcoffill@brunswickme.gov

Intermediate Pickleball Lessons

Looking to take your game to the next level? These four indoor intermediate lessons will focus on 3 key areas to improve: Strategy, Court Position, and Control.

Days: Mondays - August 4, 11, 18 | September 8, 15, 22 | October 6, 13, 20 | November 3, 10, 17

Location: Brunswick Recreation Center

Times: 4-5pm

Fee: \$80/Brunswick Residents \$130/Non-Residents

Check [Civic Rec](#) under Adult Programs.

Coordinator: Dave Coffill, dcoffill@brunswickme.gov

Dodgeball League

Dodgeball is part of Brunswick Landing's Adult Intramural Sports League in collaboration with Wild Oats Bakery and Flight Deck Brewery.

Session 1: Tuesdays, September 16 - October 28 HBS Gym

Session 2: Tuesdays, November 18 - December 23 Rec

Location: Brunswick Recreation Center

Times: 6:00-8:00pm

Fee: \$200 per team

Coordinator: Dave Coffill, dcoffill@brunswickme.gov



**Have another sport you would like to see offered?
Contact us at 207-725-6656**

Adult Sports and Leagues

Pick-Up Volleyball

We're excited to once again offer Adult Pick-Up Volleyball at Harriet Beecher Stowe School! These sessions are designed for all abilities to come and have fun while exercising! You can even join in on the fun if you have never played volleyball before. All abilities and experience levels are welcome!

Session I: September - October

Times: 6:00-8:00pm.

Fee: \$15 Brunswick Residents/\$21 Non-Residents

Session II: October - February

Times: 8:00-9:30pm.

Fee: \$33 Brunswick Residents/\$46 Non-Residents

Session III: September - October

Times: 6:00-8:00pm.

Fee: \$33 Brunswick Residents/\$46 Non-Residents

Check Civic Rec when you register for specific skip dates for each session.

Age: 18 and up

Dates: Wednesdays

Location: Harriet Beecher Stowe School

44 McKeen Street, Brunswick

Coordinator: Aaron Cropley acropley@brunswickme.gov

Pick-Up Indoor Pickleball at the Rec Center

- 2 courts for drop-in style play, allowing adults to play throughout the week. All levels welcome
- Selection of paddles and pickleballs are available for players to use during the session
- \$2 Brunswick resident, \$3 Non-Brunswick resident
- Virtual punch card available \$20 Residents/\$30 Non-Residents (11 punches)
- PRO Fitness Members get a \$10 discounted virtual punch card
- Check the weekly building [schedule](#) on the website for times and days.

Pick-Up Basketball

- Free and open to men and women 18+
- Teams are made on the fly and games are any version the group chooses (3v3, half court, full court, pressing, slow down, 5v5 etc.)
- No officials, so call your own fouls
- Brunswick Rec Center, Courts 1 or 2
- Check the [weekly building schedule](#) on the website



**Have another sport you would like to see offered?
Contact us at 207-725-6656**

Community in the Parks

in Collaboration with Brunswick Parks & Recreation

PRESENTS
MOVIES
in the
PARK

at The MARC

Free Family Fun

Disney **HOCUS POCUS**

Fall Festival Events including:

FREE face painting, pumpkin fun, lawn
games & classic preshow food & activities!

FREE sweets from Gelato Fiasco!

September 20th @ 6:30PM

 @moviesintheparkbrunswick

Red Carpet Event Sponsor:



Brunswick
DOWNTOWN ASSOCIATION

Follow all
our up to
date collab
fun HERE:

Rain Date Sept 21st

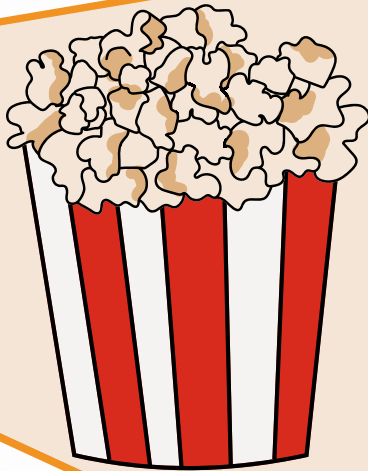




SUM Brunswick MER



HALLOWEEN PUMPKIN DECORATING & POPCORN PARTY!



**SATURDAY,
OCTOBER 18
10AM OR 11AM
SESSION**

LOCATED ON THE MALL FOR YOUTH OF ALL AGES

\$10 PER RESIDENT CHILD

\$13 PER NON-RESIDENT CHILD

(Rain location will be the Brunswick Rec Center)

Brunswick
maine
Parks and Recreation

Register online at www.brunswickme.gov/parks-recreation or
give us a call at 207-725-6656 or email us at recprograms@brunswickme.org 16

FAMILY HALLOWEEN WINDOW PAINTING ON MAINE STREET



SUNDAY, OCTOBER 19

FROM 11AM-3PM

\$20/resident \$27/non-resident

SKETCHES MUST BE PRE-APPROVED DURING
REGISTRATION
PAINT AND BRUSHES ARE PROVIDED

Brunswick
maine
Parks and Recreation

Register as a family online at www.brunswickme.gov/parks-recreation or
give us a call at 207-725-6656 or email us at recprograms@brunswickme.org

ANNUAL HALLOWEEN PARADE AND TENT OR TREAT

LOCATED ON THE MALL



FRIDAY, OCTOBER 31ST

PARADE BEGINS AT 4:30PM

TENT OR TREAT WILL IMMEDIATELY FOLLOW PARADE



For More Information call 725-6656, email recprograms@brunswickme.org
or visit brunswickme.org/park-recreation

HALLOWEEN VIRTUAL COSTUME CONTEST



HALLOWEEN 3-8PM

**SHARE YOUR SCARIEST, FUNNIEST, MOST
OUTRAGEOUS COSTUMES AND JOIN THE FUN!
WINNERS RECEIVE A DOZEN DONUTS FROM FROSTY'S!**

Categories: Toddler, Preschool, Kindergarten, 1st grade,
2nd grade, 3rd grade, 4th grade, 5th grade, 6th grade,
Family, and Pets

Post your picture using
#brunswickmeparksandrec
or email recprograms@brunswickme.org

To complete your entry, include name of
family/animal/person in the picture, and
the category.



Brunswick
maine
Parks and Recreation

Brunswick Parks and Recreation Department

58TH ANNUAL EAST COASTAL SKI & SKATE SALE

**Sunday, November 2
from 1-4pm**

**At the Brunswick
Recreation Center
220 Neptune Drive,
Brunswick Landing**



**Interested in selling items or
learning more about the sale?
Scan the QR Code!**

**Questions? Contact us at 725-6656 or email
recprograms@brunswickme.org. All proceeds support
Brunswick Parks and Recreation Department Programs**

Brunswick
maine

Ski and Skate Sale

This very popular sale will again offer hundreds skis, skates, boots, and recreation equipment for sale at rock-bottom prices. Vendors will be selling new items at blowout prices and there will be used items available for purchase. This is also a great opportunity to sell out-grown winter equipment and pick up better equipment at the sale!

Visa, MasterCard & Discover cards will be accepted at this sale

Interested in selling winter equipment this year?

Here is some information to help you prepare for selling used items at the Ski and Skate Sale

BEFORE THE SALE:

WHAT TO BRING IN FOR EQUIPMENT

We will accept skis, ski boots, poles, bindings, ice skates, cross country gear, sleds, snow shoes, hockey equipment, boot trees, ski carriers, and just about any kind of recreational equipment and clothing you might want to bring in. For quickest sale: Bring your equipment in good condition. (For example: skates polished and sharpened, items cleaned and dust/dirt removed, etc.)

WHERE TO BRING YOUR ITEMS

Items will be brought to the Brunswick Recreation Center at Brunswick Landing, 220 Neptune Drive, Brunswick.

WHEN TO DROP OFF YOUR EQUIPMENT

You may drop off your items Saturday, November 1 from 9am to 4pm (You'll receive a ticket stub for each item put into the sale - you must present these ticket stubs on the pick-up dates to receive your money or unsold equipment)

AFTER THE SALE:

PICKING UP MONEY AND/OR UNSOLD EQUIPMENT

Any unsold equipment or money from equipment sales can be will be: Friday, November 14 from 2-7pm and Saturday, November 15 from 9am to 3pm. Please present the ticket stub that you received when turning in your equipment to receive your payment or unsold equipment. We ask that you please pick up your unsold equipment promptly. **Any equipment left after the collection period will be donated***

SALES DONATION TO THE RECREATION DEPARTMENT

A 20% donation on all items sold will be deducted and all profits from the sale will go towards the costs associated with the operation of Youth Recreation Activities and Programs.

FMI: Contact Aaron Cropley, acropley@brunswickme.gov



Be Involved

Jobs

Looking for your first job?

A career in Parks and Recreation?

Maybe you love working with kids and want to be a camp counselor or coaching?

Email: hr@brunswickme.org or check the Town's employment page for more info on full-time and part-time positions: www.brunswickme.gov/Jobs

Volunteer Opportunities

Contact us for volunteer opportunities if you want to:

- Fulfill volunteer hours to graduate
- Donate your time as a coach
- Work a special event
- Help wherever you're needed with our youth and adult programming

Email Averill Erdody at aerdody@brunswickme.gov for more info!

Sponsorships

Sponsoring a program is a great way to reach the community where you do business. There are lots of opportunities for businesses to participate. You could:

- Volunteer with your work mates to clean up a local trail
- Sponsor a club, team, division or event
- Coach a team
- Donate in-kind items or services

Email Averill Erdody at aerdody@brunswickme.gov for more info!

THANKS TO OUR SPONSORS!

Many of our events and program rely on financial support for community members and organizations. These contributions keep participation fees low so more children can experience the benefits of youth programming.

Please consider making a contribution towards one of our teams, programs, or events!

Contact us for more info: 207-725-6656 or aerdody@brunswickme.gov





Be Involved

The Brunswick Parks and Recreation Department's Recreation Commission consists of five members who are appointed by the Town Council. The Commission meets on the third Wednesday of the month at 7:00pm and has the following general powers and duties:

- The Recreation Commission shall review programs and formulate policies related to public recreation in the Town of Brunswick, including the coordination of its programs with those of other municipal departments.
- It shall be the overall responsibility of the Recreation Commission to promote, enhance and protect recreational opportunities in Brunswick in order to maintain and further develop the quality of life and objectives set forth in the Comprehensive Plan of the Town of Brunswick.
- The Recreation Commission shall be responsible to set forth policies and procedures for all programs operated and administered by the Brunswick Parks and Recreation Department.
- The Recreation Commission shall be responsible for the supervision of all recreational activities conducted by the department on all property owned by or under the control of the town, or on property not owned or under the control of the town.
- The Commission shall communicate with other recreational user groups to coordinate assistance, training, and use of facilities to collectively support extended recreational activities within the Town of Brunswick.
- The Recreation Commission shall develop an appropriate plan of maintenance based on an annual budget and CIP projections for the proper maintenance of the Recreation Department building(s) and for any other recreational structures or facilities placed under its jurisdiction by the Town Council.
- The Recreation Commission will assist in the development of an annual budget.

If the Recreation Commission does not spark your interest, consider another one of the other 20+ Boards and Committees on which citizens may serve. More information can be found at our website: www.brunswickme.gov/277/Boards-Committees

There may be other special committees not listed. Please contact the Town Clerk's office at 207-725-6658 for more information.

Midcoast Athletic and Recreation Complex (The MARC)

Creating a state-of-the-art regional hub for wellness, sports, and play at Brunswick Landing
The MARC is a redevelopment of the vacant 10-acre parcel adjacent to the Brunswick Recreation Center. Per the Town's agreement with the US Navy, this land must be used for recreation purposes. Our goal is to turn this empty lot into a recreational sports and athletic complex that serves all ages and abilities from across the region. Construction of the MARC will be divided into phases.

Completed Phase 1 Tier 1A in June 2024

- 8 Pickleball Courts
- 1 Skatepark
- 1 Walking Loop

Completion of Phase 1 Tier 1B in June 2025

- Playground for ages 0-5

Other Phase 1 elements yet to be completed include:

- 1 Multi-purpose Synthetic Turf Field
- 1 Multi-purpose Natural Grass Field
- 2 Basketball Courts
- 2 Tennis Courts
- 1 Playground (ages 5-12)

Future phases of the project will include:

- Aquatics facility
- Multi-purpose Ice Skating Rink
- Restroom and Concessions



Scan the QR Code for more info!

For project updates visit www.marcproject.org. For Skatepark and Pickleball Court schedules and programs, visit brunswickme.gov/parksandrecreation



Visit the MARC at 220 Neptune Drive on Brunswick Landing.

Welcome Center

Community Room at the Welcome Center

The Welcome Center serves as a centralized resource for immigrants arriving in Brunswick. It provides a space for individuals accessing legal, workforce, and English language learning services and provides a hub for socializing, internet use, and childcare, among other resources. The Welcome Center is located in the back of the Brunswick Recreation Center at the Brunswick Landing. The entrance and parking lot can be found off Venture Ave.

The Community Room is staffed by Jonathan Francois, courtesy of the Immigrant Resource Center of Maine. It is open by appointment only from 9am-5pm Monday thru Friday. You may contact Jonathan by calling 207-520-9425 by or by emailing at francois@ircofmaine.org



O Welcome Center serve como um recurso centralizado para os imigrantes que chegam a Brunswick. Proporciona um espaço para pessoas que acedem a serviços de habitação, legal, força de trabalho e aprendizagem de língua inglesa e fornece um centro de socialização, uso da internet, programação pós-escolar, entre outros recursos. O Welcome Center está localizado no Centro Recreativo brunswick, utilizando a entrada e estacionamento do Venture Ave.

Em parceria com o Centro de Recursos Imigrantes do Maine, o Welcome Center é com a equipa de Jonathan Francois e está aberto apenas por marcação das 9h às 17h de segunda-feira a sexta-feira. Você pode contactar Jonathan ligando para 207-520-9425, e-mail francois@ircofmaine.org

Le Welcome Center sert de ressource centralisée pour les immigrants qui arrivent à Brunswick. Il offre un espace pour les personnes qui accèdent à des services de logement, juridiques, de main-d'oeuvre et d'apprentissage de l'anglais et fournit un centre de socialisation, d'utilisation d'Internet, de programmes parascolaires, entre autres ressources. Welcome Center est situé dans le centre de loisirs Brunswick, en utilisant l'entrée et le parking de Venture Ave.

En partenariat avec le Maine Immigrant Resource Center, le Welcome Center est avec l'équipe de Jonathan Francois et n'est ouvert que sur rendez-vous de 9h00 à 17h00 du lundi au vendredi. Vous pouvez contacter Jonathan en appelant le 207-520-9425 ou en envoyant un courriel francois@ircofmaine.org

El Welcome Center sirve como un recurso centralizado para los inmigrantes que llegan a Brunswick. Proporciona un espacio para que las personas accedan a servicios de vivienda, legales, de fuerza laboral y de aprendizaje del idioma inglés y proporciona un centro para socializar, usar Internet, programación después de la escuela, entre otros recursos. El Welcome Center está ubicado en el Centro de Recreación de Brunswick utilizando la entrada y el estacionamiento de Venture Ave.

En asociación con el Centro de Recursos para Inmigrantes de Maine, el Welcome Center está gestionado por el equipo de Jonathan Francois y está abierto con cita previa solo de 9 a.m. a 5 p.m. de lunes a viernes. Puede comunicarse con Jonathan llamando al 207-520-9425 o enviando un correo electrónico a francois@ircofmaine.org

BRUNSWICK RECREATION CENTER

The Recreation Center features a strength room, cardio area, basketball and pickleball courts, and an indoor track. The Fitness Center, track and courts will be open anytime the Recreation Center is open, please check the weekly schedule for any changes or updates due to programming and events. This building is also home to the Parks and Recreation Department administrative offices and the Welcome Center. The Welcome Center is open by appointment ONLY, Monday—Friday from 9:00am-5:00pm

Amenities

- Two Basketball Courts that are regularly converted to Indoor Pickleball Courts. Multiple time slots throughout the week are available for individuals or families use the courts. This service is free and we offer some basic equipment to use.
- Open Use = Any age use
- Family Open Use = Use by families (Adults and Children)
- K-12 Open Use = Use for grades K-12 (under 13 requires adult supervision)
- High School Use = Use for grades 9-12
- Adult Open Use = Adults 18+
- Lobby with ample seating and storage for outerwear and outdoor shoes
- Indoor Track: 2 lane, one-way direction, track with distance of 1/9 of a mile
- Cardio Fitness Area and Strength and Conditioning Area (Included with Paid Membership Only)
- Full locker rooms complete with bathroom facilities and showers
- Beverage and snack vending machines
- Informational pamphlets and maps of Brunswick's outdoor spaces
- Abundant parking for those looking to access Rec Center or area trails
- Free, public Wi-Fi access

Reminders

- Children under 11 years old must be accompanied by an adult at all times.
- No rollerblades, roller-skates, strollers, skateboards, allowed on track
- Wheeled walking aids, canes and wheelchairs permitted
- No amplified music played through speakers allowed
- Use cubbies and hooks in lobby to store personal items or store in locker room
- Locks are available for your purchase at Main Office
- The Recreation Department is not responsible for items lost or stolen—Please lock up your valuables!

Recreation Center

Hours

Sunday 8am-4pm

Monday - Friday 6am-8pm

Saturday 7am-6pm

Summer Hours

Sunday 7am-3pm

Monday - Friday 6am-8pm

Saturday 8am-12pm

CLOSED:

Easter Sunday

Memorial Day

Independence Day

Labor Day

Thanksgiving Day

Christmas Day

Parks and Recreation

Administrative Office

Hours

Monday-Thursday 8am-4:30pm

CLOSED:

New Year's Day

Martin Luther King, Jr. Day

President's Day

Patriot's Day

Memorial Day

Juneteenth

Independence Day

Labor Day

Indigenous Peoples' Day

Veterans Day

Thanksgiving Day

Christmas Day

BRUNSWICK RECREATION CENTER

All users of the Rec Center are required to provide personal ID information upon entering the building, as well as complete a building use waiver. Upon completing membership documentation, users will be given a membership tag that will be scanned at the main entrance of the building each visit. Access to the Fitness Center is based on enrollment into a Pro Level Membership or by purchasing a Day Pass. Pro members, as well as Day Pass users, will need to scan a membership tag in order to gain access to the Fitness and Cardio spaces. These spaces feature strength and conditioning equipment, a stretching and yoga area, free weight equipment, and many cardio machines. For more info about Open Gym or the walking track, please email recprograms@brunswickme.org, call 725-6656, or visit our website: brunswickme.gov/parks-recreation

Basic Membership

Basic Membership to the Recreation Center is free for Residents and Non-Residents of Brunswick. Basic Members have access to the locker room facilities, the walking track and courts during open hours. Day Passes are available for Basic Members looking to utilize the fitness and cardio spaces on a day-by-day. Paid programming requires a separate fee.

Pro Membership

Includes full access to strength and cardio spaces and equipment in addition to the amenities included in the Basic Membership.

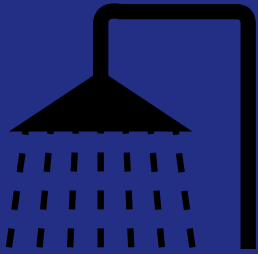
SilverSneakers Pro Membership

SilverSneakers comes automatically with qualifying Medicare health insurance plans. Eligible Medicare beneficiaries just need to get a SilverSneakers membership card to show staff. Contact your health insurance plan to find out if SilverSneakers is covered, or visit the SilverSneakers website to check eligibility online. If you're eligible, then you can fill out the SilverSneakers form online to get and print your membership ID card to bring to the Brunswick Rec Center! SilverSneakers members have access to all amenities provided to Pro Members!

MEMBERSHIP	DETAILS	RESIDENT	NON-RESIDENT
BASIC	Includes access to track and court during open hours (does not include paid programs)	FREE	FREE
PRO	Includes access to strength and cardio spaces	\$20/Month \$220/Year (1 month Free with Year Pass, \$20 savings)	\$30/Month \$330/Year (1 month Free with Year Pass, \$30 savings)
DAY PASS	PRO level membership for a day	\$5/Day	\$10/Day

\$5 OFF monthly discount for active military, adults age 65+ and students.
Discounts apply to month/year rates, cannot be combined and must show ID.

BRUNSWICK RECREATION CENTER



Locker Rooms,
Restrooms and
Showers



Free Wifi



Charging
Station



Warm Up

**The Brunswick Recreation Center is open to the
General Public if you:**

- **Lose power**
- **Need a place to charge your devices**
- **Need to warm up**
- **Need to take a shower**

**These services are available for free,
during regular open hours.**

Parks and Recreation Department Facilities

Here you will find information for the parks and facilities available in the Town of Brunswick. For more information on any facility, contact the Parks and Recreation Department at 207-725-6656 during business hours. You may also download the complete Parks and Recreation A to Z listing (PDF) from our website for more detailed descriptions at brunswickme.gov/206/Parks-Facilities, which will also give you more information about a particular park, including directions and trail maps.

Playgrounds

Coffin Pond Recreation Area
Edwards Field
Hambleton Avenue Playground
Longfellow Playground
MARC Playground
McKeen Landing Park
Nathaniel Davis Park

Trails

Androscoggin River Bicycle Path
Bay Bridge Landing Wetland Park
Coffin's Ice Pond
Coffin Pond Recreation Area
Cox Pinnacle
Greater Commons
Kate Furbish Preserve
Lishness Park
Maquoit Bay Conservation Land
Merrymeeting Park
Pejepscot Dam Recreation Area
Sawyer Park
Town Commons

The MARC

Skatepark
Pickleball Courts
Walking Loop

Community Gardens

Senior Garden
Tree Nursery

Ice Rinks

Coffin Pond Ice Skating Rink
Lishness Hockey Rink
Mall Ice Skating Rink

Parks and Natural Areas

250th Anniversary Park
Androscoggin River Bicycle Path
Bay Bridge Landing Wetland Park
Captain William A. Fitzgerald U.S.N.
Recreation and Conservation Area
Chamberlain Avenue Esplanade
Coffin Pond Recreation Area
Coffin's Ice Pond
Cox Pinnacle
Former Maine Gravel
Great Island Chain
Greater Commons
Kate Furbish Preserve
Lamb Park
Lower Mall
Maine Street Station Park
Maquoit Bay Conservation Land
Merrymeeting Park
Mill Street Canoe Portage
Nathaniel Davis Park
Pejepscot Dam Recreation Area
Pinette's Landing
Sawyer Park
Spring and McKeen Lot
Swinging Bridge Park
Town Commons
Upper Mall

Gateways and Beautification

250th Anniversary Park
Cooks Corner Gateway
Maine Street Flowers
Mill Street Lot
Pleasant Street Gateway

Boat Launches

Barnes Landing
Bay Bridge Landing Wetland Park
Maquoit Landing (Wharton's Point
Landing)
Mere Point Boat Launch
Mill Street Canoe Portage
Pejepscot Dam Recreation Area
Princes Point Landing
Sawyer Park
Simpson's Point Landing
Water Street Boat Landings

Athletic Fields

Bicycle Path Field–Soccer
Crimmins Field–Soccer, Football,
Lacrosse
Edwards Field–Baseball/Softball,
Basketball, Soccer
Lishness Park–Baseball/Softball, Soccer
Shulman Park–Soccer, Lacrosse
Stowe Field–Football, Soccer, Rugby,
Field Hockey
Wildwood Field–Soccer

Dog Parks

Merrymeeting Dog Park



Dennis Wilson serves as the Town's Parks and Facility Manager and Licensed Town Arborist.

Please contact him with questions or concerns regarding tree or facilities.

Phone: 725-4207

Email: dwilson@brunswickme.gov