

ECONOMIC DEVELOPMENT DEPARTMENT BUDGET PRESENTATION

April 17, 2025





MISSION AND STRATEGIC GOALS



The Economic Development Department staff work to create a more stable and robust local economy by fostering growth, enhancing competitiveness, and supporting the quality of life in Brunswick.

Economic Development is a broad-based effort that includes a variety of programs, policies, investments, and planning and development activities with the overarching goal of improving the local economy and social well-being of our community.



POLICY/PROGRAMS



PLANNING & DEVELOPMENT

- land use planning efforts
- zoning
- traffic and transportation
- natural resources protection and enhancement
- energy efficiency projects
- housing preservation, production
- direct assistance to businesses and stakeholders
- Identifying and securing sources of funding

POLICY WORK/PROGRAM DEVELOPMENT

Cook's Corner Revitalization Plan:

- Design Standards Overlay District
- Curb Cut Ordinance
- Contract Zoning
- Amendments to the ADU Ordinance

Committee Work:

- Developed Affordable Housing Support Fund
- Developed Inclusionary Zoning policy
- Reworked Rental Registry ordinance
- BDC Childcare Provider Assistance Grant
- Developing a bike/ped network map

KEY ECO DEV INITIATIVES

01

GOAL AREA 1 - TRANSPORTATION AND CONNECTIVITY

02

GOAL AREA 2 - POLICY AND PLANNING

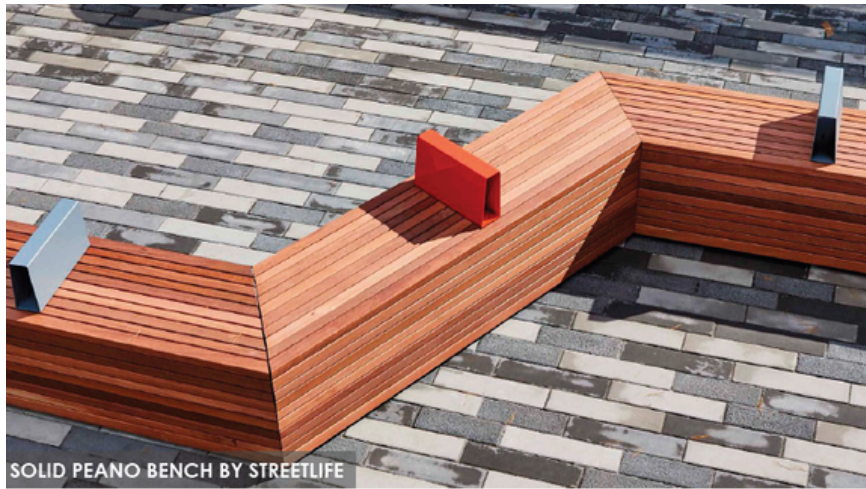
03

**GOAL AREA 3 - ECONOMIC DEVELOPMENT AND
PROSPERITY**

PLACEMAKING



MAINE STREET CONCEPT A



SOLID PEANO BENCH BY STREETLIFE



PLAINS & PODS BY LANDSCAPEFORMS

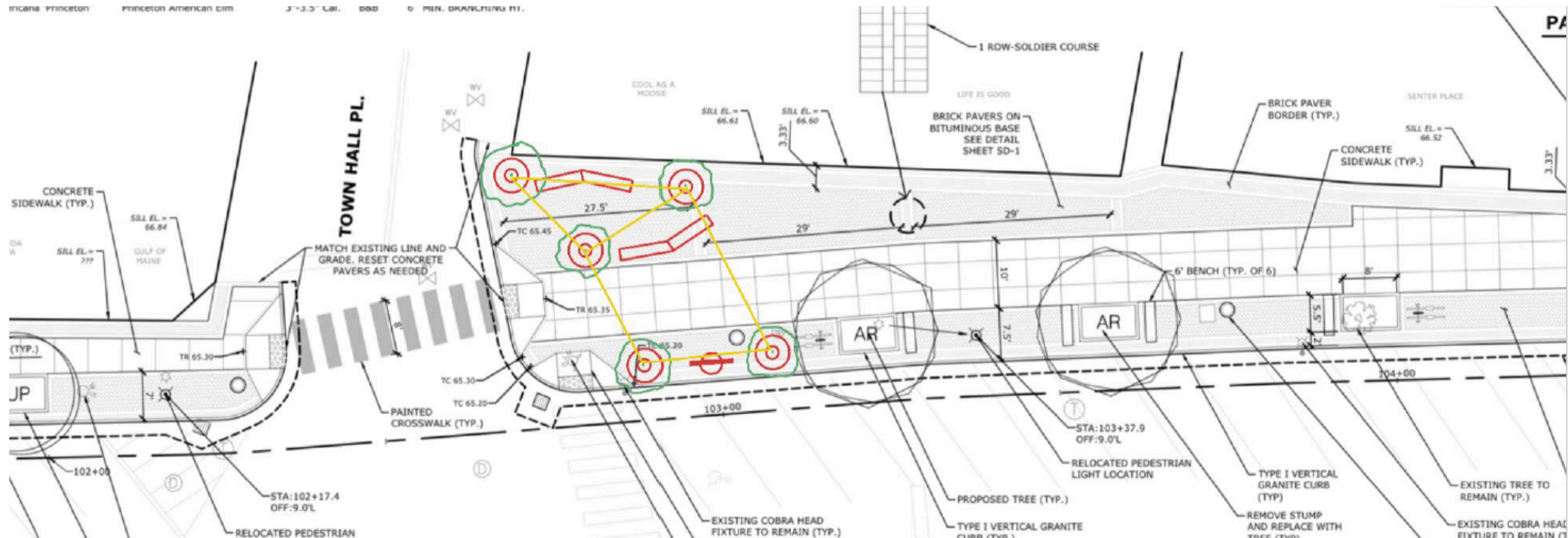


ROUGH&READY CURVED BENCH BY STREETLIFE



SHRUBTUBS CYLINDRICAL BY STREETLIFE

PROPOSED PLAN AND DETAILS





JENNEY STATION SITE CONCEPT B



JORDAN AVENUE & BATH ROAD CONCEPT C



BATH ROAD FORMER GAS STATION CONCEPT D



MDOT JUGHANDLE (BATH ROAD & ADMIRAL FITCH) CONCEPT E



HOUSING & DEVELOPMENT



STRATEGIC EFFORTS:

INCREASE HOUSING OPTIONS ACROSS OUR COMMUNITY FOR PERSONS OF ALL AGES AND ABILITIES

PRODUCTION, PRESERVATION AND DIRECT ASSISTANCE

FACILITATE DEVELOPMENT AND CONSERVATION OF LAND/NATURAL RESOURCES THROUGH PUBLIC-PRIVATE PARTNERSHIPS

INFRASTRUCTURE INVESTMENTS

INFILL DEVELOPMENT AND ADAPTIVE REUSE OF HISTORIC PROPERTIES

PROTECT OUR NATURAL RESOURCES

DEVELOP BIKE/PED NETWORK MAP

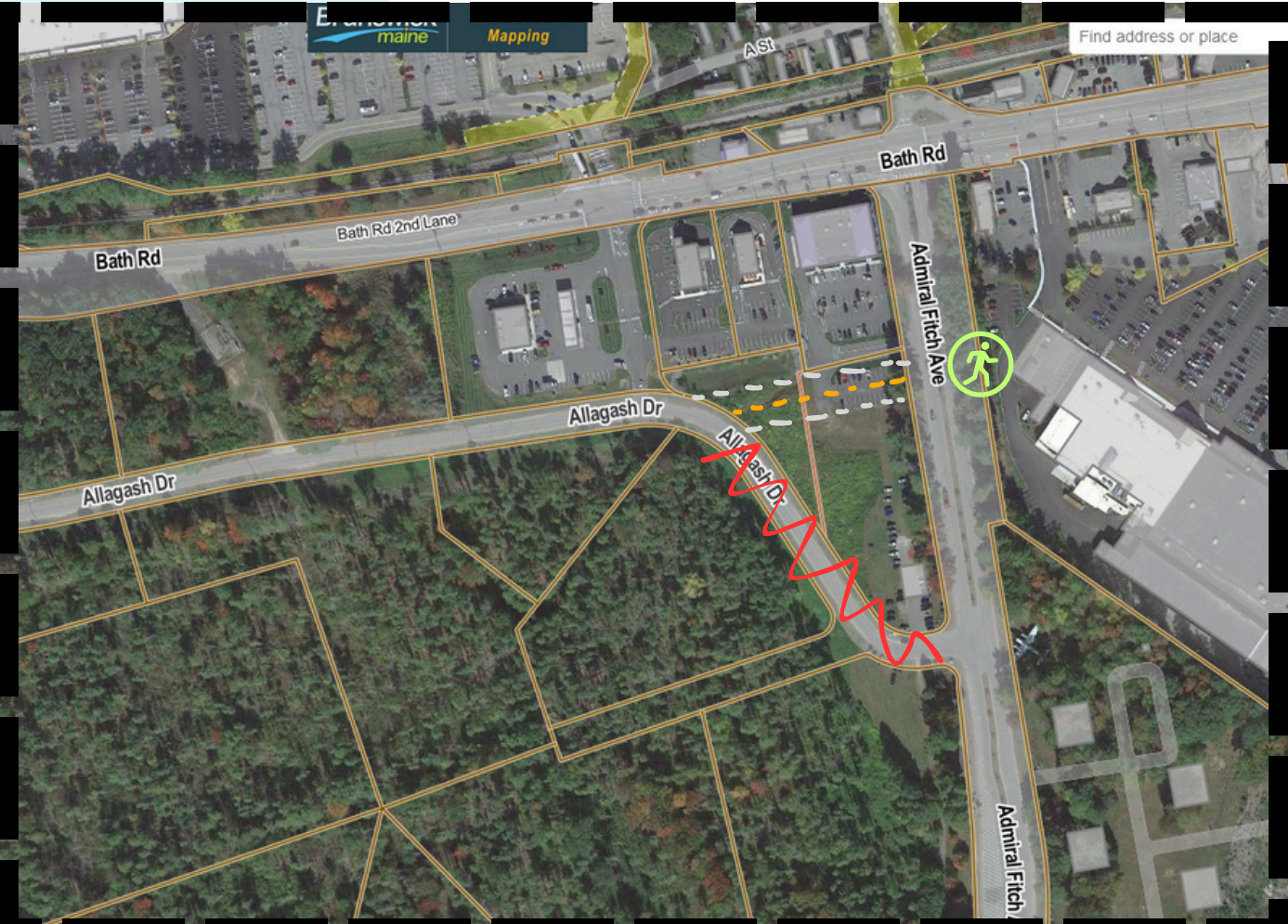
INCREASE CONNECTIVITY IN OUR COMMUNITY THROUGH SMART GROWTH DESIGN

CIP PROJECTS

TRANSPORTATION AND CONNECTIVITY



STEPHEN'S DRIVE



ALLAGASH ROAD

QUESTIONS

