

Recreation

Overview

Recreation opportunities are provided in Brunswick through a range of public and private resources. The Town's Parks & Recreation Department provides a variety of recreation programs throughout the year open to all community members. Many of these programs are offered at free or reduced prices for residents. The Parks & Recreation Department is responsible for the management of the Town's parks, landscaped gateways, open spaces, athletic fields, public multi-use trails, and the Town's Recreation Center which includes a childcare center, fitness center, and Immigrant Welcome Center.¹ A large variety of private recreation facilities are also available throughout the community and in the region, usually for a fee. In addition, Bowdoin College has facilities and programs available to those who work or study there (though those facilities are not typically available to the general public). Additionally, there are many conservation areas and additional trail networks in the area maintained by regional partners such as the Brunswick-Topsham Land Trust (BTLT) and the Maine Coast Heritage Trust. Refer to **APPENDIX A** at the end of this chapter for a map of Outdoor Recreation and Open Spaces.

The typical community (town or city) in the United States has one park for every 2,323 residents.² In Brunswick, there is one park for every 1,087 residents.³ (This figure only includes parks wholly or partially maintained by the Town and does not include open spaces maintained by regional partners such as the Brunswick-Topsham Land Trust.) Between the Town and BTLT, there are more than 2,995 acres of publicly accessible parks and open space. Of these areas, 2,543 acres are managed by the Town, with the remainder being managed by BTLT.⁴ This means that there is approximately 138 acres of publicly accessible parks and open space per every 1,000 residents.⁵

Though Brunswick has a diversified and robust mix of facilities not frequently found in other communities, some are not adequately maintained or built-out to meet the needs of the community. Issues range from the need for landscaping improvements to the need for additional parking areas, storage facilities, restrooms, lighting upgrades, and ADA accessibility modifications.

Existing Facilities & Programming

Brunswick residents have access to a variety of recreational programming for all ages, and public-private partnerships are essential in maintaining this level of service. The Parks & Recreation Department administers over 100 recreational programs and events annually to include team sports, individual sports, educational programs, field trips, and a range of other activities. A comprehensive list of programming offered by the department can be found in **APPENDIX B** at the end of this chapter.

¹ <https://www.brunswickme.org/DocumentCenter/View/7900/Brunswick-Outdoor-Parks-MAP?bidId=>

² Per the National Recreation and Park Association's 2022 Agency Performance Review, available online here: <https://www.nrpa.org/siteassets/2022-nrpa-agency-performance-review.pdf>

³ This figure was calculated based on the 2020 Census population for Brunswick of 21,756 residents. <https://www.census.gov/quickfacts/fact/table/brunswicktowncumberlandcountymaine/POP010220#POP010220>

⁴ <https://www.brunswickme.org/DocumentCenter/View/7900/Brunswick-Outdoor-Parks-MAP?bidId=>

⁵ Figure calculated based on 1,600 acres of publicly accessible parks and open space, and a population of 21,756 residents (as of the 2020 Census).

Preschool/Child Care

For more than 60 years, the Department operated a preschool out of its facilities. However, when Kate Furbish Elementary School was built in 2019 the School Department began operating their own Pre-Kindergarten program, thus leading to the closure of the Department preschool. Because of the intense demand for childcare services in the community and across the state during this timeframe, the space previously used for the preschool program at the Recreation Center on Brunswick Landing was converted into a Childcare center. The Brunswick Parks and Recreation Childcare Facility now has the capacity to provide care to 40 children ranging from 6-weeks to 5 years-old 5 days/week. The Department also began offering after-school care for children in grades 3-5 at the Harriet Beecher Stowe Elementary School Gymnasium in 2023.

Recreation Center

The Town Recreation Center completed renovations in the fall of 2023. It is located on Brunswick Landing and boasts a 22,000 square-foot fitness center which includes an indoor track, strength and conditioning weight room, cardio fitness area, indoor Pickleball courts, two basketball courts, and locker rooms.⁶ The Rec Center is also home to the above noted Child Care Center, staff offices, and The Welcome Center which serves as a centralized resource for immigrants arriving in Brunswick. This center provides a space for individuals accessing legal, workforce, and English language learning services and provides a hub for socializing, internet use, and childcare,

Other Facilities

The Department is responsible for the maintenance of a variety of different parks, landscaped gateways, and open spaces, plus many various kinds of athletic fields, 30.41 miles of public multi-use trails, and 12.5 miles of sidewalks on the routes to schools. promoting safe routes to schools in all weather. The department's maintenance equipment is housed at the Edwards Field complex in 2 out-buildings separated by a large gravel public parking area. A full inventory of the Town's parks and other recreational facilities is available at the end of this section.

The Parks & Recreation Department maintains several athletic field complexes which host hundreds of organized sporting events throughout the year. These include: Androscoggin River Bicycle Trail Soccer Field, Edwards Field (soccer, baseball, softball, basketball), Lishness Field (soccer, baseball, softball, hockey), Crimmins Field (soccer, football, lacrosse), Shulman Park, Stowe Field (soccer and football), Stowe Gymnasium (indoor basketball court), and Wildwood Park (soccer).

A community garden space is available on Industry Road, next to the Public Works Department, with plots administered by the People Plus Center. The Department also manages the Merrymeeting Dog Park along the Androscoggin River Bicycle Trail.

In the 2008 Comprehensive Plan, East Brunswick was identified as an area lacking adequate recreational facilities. Since that time, there have been ongoing efforts to increase active recreation opportunities in East Brunswick through two ongoing projects.⁷ The first of these is

⁶ <https://www.brunswickme.org/DocumentCenter/View/7900/Brunswick-Outdoor-Parks-MAP?bidId=>

⁷ For the purposes of this Plan, the term “active recreation” means recreational activities that require specialized fields, courts, or other developed areas. Examples include but are not limited to pickleball or

the development of a 10-acre parcel on the former Brunswick Naval Air Station transferred from the United States Navy to the town in 2018 known as The Midcoast Athletic & Recreation Complex (The MARC). Construction began in August of 2023. This parcel sits adjacent to the



Recreation Center on Brunswick Landing and will host many active recreation opportunities to include basketball, Pickleball, tennis, a multi-purpose turf field, 2 playgrounds, a skatepark, a perimeter walking trail, an aquatics facility, as well as a public skating rink. All facilities will be ADA compliant.

Additionally, a 229.4-acre tract of land off Old Bath Road was donated to the Town in 2019. Known as the Maine Gravel Services Lot, the parcel is adjacent to the town-owned Capt. William A. Fitzgerald U.S.N. Recreation and Conservation Area. At the time of plan drafting, a Town committee was working to develop a Master Development and Management Plan for this parcel which includes opportunities for 4-season active recreation.

Per conversations with the Parks & Recreation Director at the time of plan drafting, demand for outdoor recreation facilities has increased significantly since March 2020 and the beginning of the COVID-19 Pandemic. When it was unsafe to gather indoors, many people started looking for ways to gather safely, which typically meant playing outdoor sports or walking on trails that

could accommodate safe social distancing. There has also been a large demand for Pickleball courts since 2020 as the sport has seen a national rise in popularity. Additionally, residents have lobbied the Town to increase trail interconnectivity throughout the community.

The School Department provides organized sports and recreation programs for students in junior and senior high. The School Department is dependent upon private facilities to host their indoor track teams, hockey teams, as well as swim and dive teams due to not having municipal facilities for these sports. Bowdoin College is most frequently used, however, for a fee. The People Plus Center, with the stated mission of “supporting an engaged, healthy, and **independent life for older adults, while joining others to build community for all ages,**” has expanded its services to provide opportunities to residents of all ages.

In general, access to existing playgrounds is considered good in much of Brunswick but lacking in East Brunswick. Most existing playgrounds do not meet the Standard Consumer Safety Performance Specifications, and ADA accessibility is not uniform throughout the Town’s playgrounds. The majority of playgrounds are operated by the School Department and within the existing growth area and are served by sidewalks and pedestrian infrastructure. School playgrounds are located at Harriet Beecher Stowe, Kate Furbish, Coffin schools. Playgrounds operated by the Parks & Recreation Department include those located at Coffin Pond Recreation Area, Edwards Field, Hambleton Avenue, McKeen Landing, and Nathaniel Davis Park. The playground at the former Longfellow Elementary School was sold to Bowdoin College in 2011 and has since been leased back to the town. A new playground is currently under construction at the site that will feature natural earthscapes and set to open in the fall of 2024.

In addition to facilities managed by the Parks and Recreation Department, there are several private recreation facilities in and around Brunswick, including several indoor fitness centers (weight rooms, group classes, aquatic facilities, tennis, and other racquet sports), golf courses, studios (yoga, dance, martial arts, gymnastics, etc.), an indoor turf field, arts and crafts, and centers for the performing arts.

In 2016, a satellite location of the Bath Area Family YMCA opened at Brunswick Landing (known as the Landing YMCA). The location features an indoor basketball court, Pickleball and racquetball courts, weights and aerobic exercise areas, and other amenities for use by members of the Y.

Although the Town does not have any public indoor aquatic facilities, there are 2 private pools operated by the YMCA in neighboring Bath and Freeport which are for use by members of the Y, as well as the Bowdoin College pool which is occasionally available for public programming. The Town operates Coffin Pond, an outdoor swimming facility, during summer months. As mentioned above, there is a Town-approved, planned outdoor aquatics facility to be developed at the MARC location on Brunswick Landing. However, funding will likely delay the development of that facility. The committee working on the Maine Gravel Services Master Development and Management Plan may include a recommendation to permit swimming at the pond on site which would expand summer swimming program opportunities for the public. Thomas Point Beach is a private, pay-to-access beach with events, camping and day beach passes available. Whites Beach is another privately-owned facility that offers swimming in an inland pond, as well as camping opportunities.

In winter months, the Town maintains 3 outdoor ice-skating rinks, one on the Lower Mall in downtown, one at Coffin Pond, one at Lishness Park (the only one approved for hockey). With the dramatic changes to local climate over the last 5 years, these facilities have become more and more challenging to operate as winters trend warmer. The Town does not have an indoor or refrigerated ice rink, however, the master plan for the MARC Project includes a covered, refrigerated ice rink. Snowmobiling and other motorized vehicles are not allowed on any of Brunswick's trails, however, snowmobilers enjoy private trails for that purpose located in neighboring Topsham, Bath, and West Bath.

Bicycle & Pedestrian Network

Publicly accessible trails, and bicycle & pedestrian facilities are located throughout the town. Town departments maintain more than 40 miles of sidewalks (though there are considerably more sidewalks than that which are not publicly owned, such as those at Brunswick Landing). Other pedestrian facilities include the Androscoggin River Bicycle Path (a 14-foot wide, multi-use path), and numerous hiking trails within parks and open spaces.

There are also a variety of designated bicycle routes in Brunswick, which are the Highland Road Bike Loop (19-mile loop), Pennellville Bike Loop (13-mile loop), Mere Point Bike Ride (15 miles out and back), the Androscoggin River Bicycle Path (2.6 miles long), and the Brunswick Landing Perimeter Bike Route (5.5 miles). The newly opened Kate Furbish Preserve includes 9.23 miles of combination bike/pedestrian trails.⁸

In 2022, beginner mountain bike trails also opened in Neptune Woods adjacent to the Town's Recreation Center on Brunswick Landing. These trails are also available for a variety of uses, including hiking, walking, running, snowshoeing and cross-country skiing and are managed by BTLT. The Kate Furbish Preserve includes an additional three-mile section of single track mountain bike trail near Buttermilk Cove.

The East Coast Greenway, a 3,000-mile cycling route from Key West in Florida to the Canadian border in Maine, passes through Brunswick. One of four "forks" along the route is located in Brunswick, from which cyclists can either continue on the Androscoggin River Bicycle Path towards West Bath on the future Androscoggin to Kennebec (A2K) trail, or venture inland towards Topsham, Lewiston, Augusta, Waterville, and Bangor.⁹

The 2020 update of the Town's Bicycle and Pedestrian Improvement Plan identified a variety of "wish list" bicycle improvements.¹⁰ These "wish list" routes identify the roads that the public identified as needing improvements for bicycle travel. In summary:

- Many of the top listed routes are also top utility or recreational routes, indicating that many of the most popular roads are in need of bicycle infrastructure improvements.
- Maine Street, Bath Road, and Federal Street/Sills Drive/Harpswell Road accounted for 43% of public responses and were assigned the ranking 'very high priority' for bicycle infrastructure improvements.

⁸ <https://www.brunswickme.org/DocumentCenter/View/7900/Brunswick-Outdoor-Parks-MAP?bidId=>

⁹ A map of the Brunswick section of the East Coast Greenway is available online [here](#).

¹⁰ This plan is available on the Town's website here:

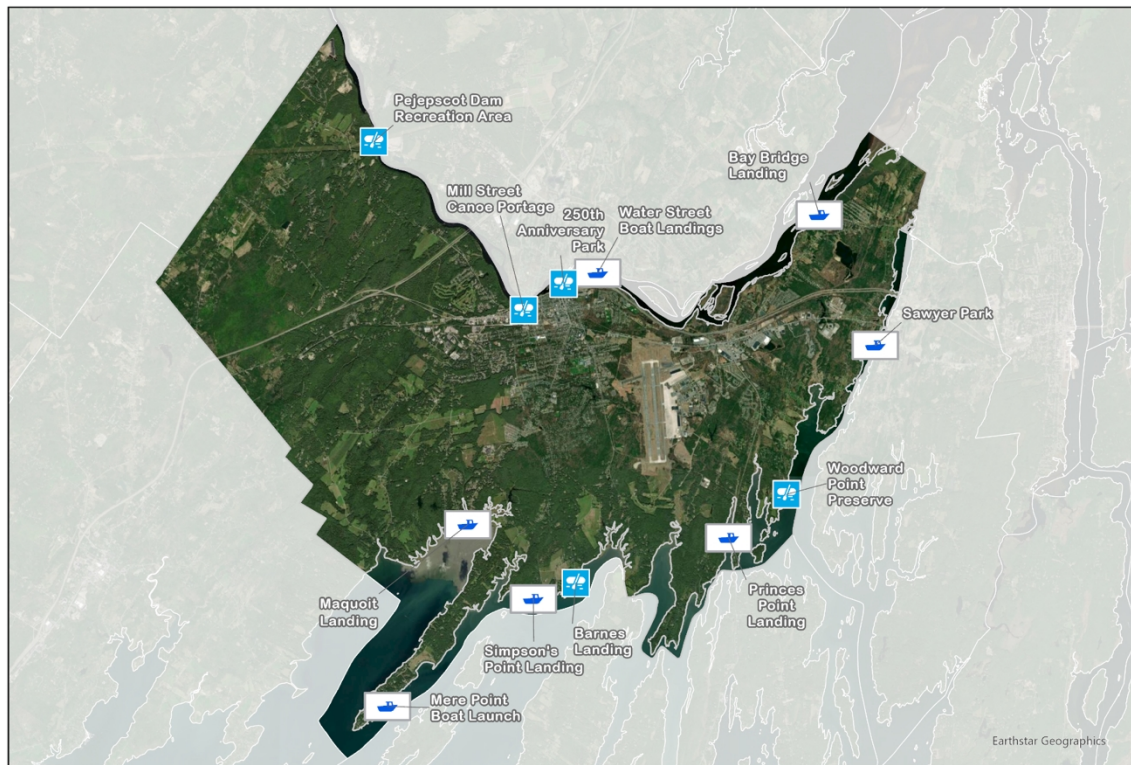
<https://www.brunswickme.org/DocumentCenter/View/5586/Brunswick-Bicycle-and-Pedestrian-Improvement-Plan-2020-Update-PDF>

Trail projects that are in various stages of planning include the aforementioned A2K Trail, Androscoggin Riverwalk, Merrymeeting Trail and Capitol to the Coast Trail. Improvements are also being made to install new bog bridging in the Town Commons, finish construction of trails at Merrymeeting Park and to restore bridging at Cox Pinnacle and Baybridge Landing and Coffins Ice Pond.

Access to Waterbodies

There are 12 public, maintained water access points across Brunswick, with at least one access point on each significant body of water.¹¹ All are maintained by the Town, except for Woodward Point Preserve, which is maintained by Maine Coast Heritage Trust and BTLT. In total, there are five sites where trailer access is available, although several of these are limited by tides and/or poor ramp conditions. Public swimming, however, is an underrepresented allowed use at these facilities. Access described here is for recreational purposes; for further details regarding commercial access to Brunswick's waterbodies, see the Marine Resources section of this plan.

Brunswick Water Access Points



¹¹ For more information about accessing and protecting Brunswick's waterbodies, see the Rivers and Coastal Waters Commission's Guide to Brunswick Rivers and Coastal Waters (2020), available online here: <https://www.brunswickme.org/DocumentCenter/View/2745/Guide-to-Brunswick-Rivers-and-Coastal-Waters-PDF>

| Androscoggin River | |
|------------------------------------|--|
| Mill Street Canoe Portage | River access for hand-carry watercraft only (Note: Park is only open when floatation barriers across the river are in place to prevent downstream travel towards the hydroelectric dam) |
| Pejepscot Fishing Park | River access for hand-carry watercraft & bank fishing |
| Water Street Boat Landings | 2 access points: one for small watercraft (also used for river access for ice-fishing); main landing can accommodate larger, trailered watercraft from a ramp into the river (and toilet facilities are available at the main landing) |
| Bay Bridge Landing | Small, gravel-surfaced boat launch location (also used for access to ice fishing in Merrymeeting Bay) |
| 250 th Anniversary Park | River access for hand-carry watercraft |

| Maquoit Bay | |
|-----------------------|---|
| Wharton Point Landing | Tidal access with ramp (tide must be near high for trailered boats) |

| Middle Bay | |
|-------------------------|---|
| Barnes Landing | Tidal boat launch for hand-carry watercraft only |
| Simpson's Point Landing | Tidal boat launch for hand-carry watercraft only |
| Mere Point Boat Launch | Major boat launch facility providing all-tide, deep-water access onto northern Casco Bay (toilet facilities and picnic areas available) |

The Town's Simpson's Point Advisory Committee released a report in the summer of 2023 detailing recommended access improvements at that facility while limiting potential impacts to neighboring properties. These included striping parking areas, the installation of bicycle racks, and revised signage including an informational kiosk with information about parking areas.¹² Work on these improvements is scheduled to begin in the fall of 2024.

Built in 2008, the Mere Point Boat Launch is the only deep water, all-tide access to northern Casco Bay. It has been heavily used since opening, however, has a size restriction to vessels 24' in length or less.

Despite miles of waterfront in Brunswick, access to the shore is considered limited as many access points to the water used by the public but some that are used by commercial shellfish harvestors and located on private property have been lost as private property owners have shifted and cultures have changed (described in further detail in the Traditional Access to Public Lands section, below). This trend is likely to continue based on projected population and in-migration changes. This places additional pressure on existing public access points, and on the users desiring access. In addition, several of Brunswick's current water access points are in need of physical improvements and/or additional parking. Many of the water access points described above lack toilet facilities (unless specifically noted), and only Sawyer Park, Mere Point Boat Launch, and the Water Street Boat Landings meet ADA-accessibility requirements. Concerns over sea level rise give concern to the future availability of these water access points, and must be considered in the upkeep, maintenance, and future development plans for all of the sites.

¹² For more detail, please review the final report available on the Town's website [here](#).

Traditional Access to Private Lands

Maine has a unique culture (codified in State statutes) that unless land is posted, it is legal to use the land for certain recreational purposes, including hunting, fishing, walking or hiking, cross-country skiing and the like.¹³ Used in this Plan, the term “traditional access” has been used to refer to those locations throughout the Town which have historically been used for access, but are not formally established as public access points. In some cases, these occur on private property based on “hand-shake” agreements, and in some cases, permission has not been granted.¹⁴

There has been a sense, documented in Town reports and plans for more than 20 years, that this access is being restricted. The Town’s 2002 Parks, Recreation and Open Space Plan noted, “There is a sense that Brunswick’s natural heritage is at risk. Many special places have been lost to development. Footpaths that once connected neighborhoods, fields and woods that existed prior to certain housing projects, and scenic vistas have been lost or otherwise permanently altered.” As cultures have changed, many landowners have expressed concerns about allowing public access to their private land.

There are few large, undeveloped forest blocks available in Brunswick for hunting. The fragmentation of these blocks over time threatens our hunting heritage and wildlife habitats. The Town did acquire the 591-acre Kate Furbish Preserve parcel from the U.S. Navy in 2013 (the largest of the Town’s open space properties), and hunting is allowed there however it is restricted to shotgun, black powder, and archery only.

Provisions for the Protection of Open Space

There is hope for the future protection of open space. The Town and Brunswick-Topsham Land Trust (BTLT) are valued collaborators in the permanent conservation of important tracts of open space. BTLT, founded in 1985, has worked to conserve over 3,220 acres of natural area in the region, either through ownership or conservation easements.¹⁵ Of this, 735.4 acres are located in Brunswick and are publicly accessible with maintained trails.¹⁶

In addition, the Town adopted an Impact Fee Ordinance in March of 2022 within which is featured a Recreation Facilities Impact Fee which has been in existence since 1989. The fee derived is paid to the Town when new residential construction (or conversion of commercial space to residential dwelling units) is permitted. The fee is calculated based on the expected population of the dwelling unit based on typical occupancy rates. Fees collected under these provisions may be used for: the acquisition of land or open space; environmental assessments; engineering or surveying directly related to the construction of recreational improvements; the actual construction of the improvement; and other costs directly related to recreation improvements.

The impact fees described above may be waived by the Parks & Recreation Director, in consultation with the Recreation Commission, when the developer or property owner proposes

¹³ A guide to the Public Use of Private Land is available on the Maine Department of Inland Fisheries & Wildlife’s website [here](#).

¹⁴ Note: In an effort to respect the rights of property owners, traditional access points have not been included in the inventory or mapping for this Plan.

¹⁵ <https://www.btl.org/mission/>

¹⁶ For more information about BTLT’s trails in Brunswick, visit <https://www.btl.org/trailmap/>

to reserve land as part of the development for recreation or public open space that is of priority value to the community.¹⁷ The Town's 2002 Parks, Recreation and Open Space Plan noted the following as priority characteristics for sites to acquire and conserve:

- Rare and unusual natural communities
- 50+/- acres of land in East Brunswick for a community park
- Large blocks of unfragmented habitat
- Significant wildlife breeding and stopover sites
- More water access points
- Sites that meet existing recreational needs but which are not publicly owned
- Conservation land with proximity to existing protected areas

Since 2002, the Town has supported local and regional land trusts and other organizations on the following conservation efforts:

| Year | Property | Owner | Size (Acres) |
|------|---|-----------|----------------------------|
| 2007 | Maquoit Bay Conservation Land | Town | 124.6 (4.5 for recreation) |
| 2010 | Coombs Property along Androscoggin River | BTLT | 23.8 |
| 2011 | Capt. William Fitzgerald Recreation & Conservation Area | Town | 66.0 |
| 2011 | Kate Furbish Preserve | Town | 591.0 (9.9 for recreation) |
| 2016 | Woodward Cove | BTLT | 18.0 |
| 2017 | Woodward Point | BTLT/MCHT | 87.5 |
| 2019 | Former Maine Gravel Services Lot | Town | 229.4 |
| 2022 | Former Merrymeeting Park | Town | 42.5 |
| 2022 | Map 25 Lot 38 located on Maquoit Bay | Town | +/- 283 |

In addition to the newly acquired properties noted above, there are many scenic and passive recreational/conservation areas with trail networks managed by the Parks & Recreation Department. These include 250th Anniversary Park, Captain William A. Fitzgerald USN Recreation and Conservation Area, Chamberlain Avenue Esplanade, Coffin's Ice Pond, Cox

¹⁷ For more information, see the Town's Impact Fee Ordinance (Chapter 20), available online here: <https://www.brunswickme.org/298/Town-Charter-Ordinances>

Pinnacle, Great Island Chain, the Greater Commons/Town Commons, Lamb Park, Pinette's Landing, Spring and McKeen Lot, and the Swinging Bridge Park. In total, Brunswick Parks & Recreation maintains 2,543 acres of land.

Privately maintained conservation lands and trail networks are an important and valued community resource. Chase Reserve, a 194-acre easement property located on Bunganuc Road has been protected by BTLT since 2011. It is the largest unfragmented forest block along the coast of Cumberland County. Just down the road from Chase Reserve is the Maquoit Bay Conservation land which has a short walking trail and is often used for birding, cross-country skiing, and swimming. The 321-acre Crystal Springs Farm, another BTLT property, features miles of trails used for walking, cross-country skiing, and snowshoeing. Additionally, it hosts a farmer's market in the warm months every weekend. Perhaps one of the Town's most valued and picturesque parks is the Lower Mall located in the center of Downtown Brunswick. It serves as the host to the weekly Farmer's Market, municipal gatherings, winter skating park, and countless other activities for people within the heart of the town. With its connection to the Upper Mall, it makes up a total of 6.9 acres preserved in the middle of Brunswick's village



The Lower Mall, perhaps the most visible park in Brunswick, is located in the center of downtown and provides a community gathering space. This park also hosts the popular Farmer's Market on Tuesdays and Fridays from May to November, a variety of concerts and cultural events, and winter ice skating. Photo courtesy of the Parks & Recreation Department.

| Privately-Owned Conservation Lands in and around Brunswick | | | |
|--|------|-----------|-----------------------|
| Chase Reserve | BTLT | 194 Acres | Hiking, birding, etc. |
| Skolfield Preserve | BTLT | 8.4 Acres | |

| | | | |
|----------------------------------|-----------|-------------|--|
| Neptune Woods | BTLT | 64 Acres | |
| Crystal Spring Farm | BTLT | 321 Acres | |
| Woodward Cove/Point | BTLT/MCHT | 24/80 Acres | |
| Birch Island South Preserve | HHLT | | |
| Helen and Walter Norton Preserve | HHLT | | |

As noted above, demand for additional recreational amenities (both active and passive) has skyrocketed since the onset of the COVID-19 pandemic in March of 2020. The Town is actively working to respond to this demand by working to increase connectivity between existing trails, both in the community and regionally. At the time of plan drafting in June 2024, the Town had recently submitted an application for funding to the federal government for a 4.79 -mile extension of the Androscoggin River Bicycle Path into Bath. Further, as previously discussed, a portion of the first phase of the Town's Midcoast Athletic & Recreation Complex (MARC) project has been funded via a mix of private and public sources and broke ground in August of 2023. The initial construction includes 8 Pickleball courts, a skatepark, a perimeter walking path, and the underground utilities for the facility.

Improvements and infrastructure investments as described above will continue to enhance and maintain the robust recreation opportunities available to the citizens of Brunswick and our surrounding communities.

As noted in the Population & Demographics section of this Plan, while population is expected to remain approximately steady, demographics of Brunswick have been steadily changing for the past 15 years and that shift is expected to continue. Outlying areas such as the Mere Point and Pennellville neighborhoods, Thornton Oaks Retirement Community, and the Arrowhead Road neighborhood have seen modest increases in population. At the same time, the average household size is declining, and the Town's senior population is growing.

A declining household size and a growing senior population will require smaller housing units closer to services. At the same time though, there is a need to attract younger workers to the community who will be able to take care of the seniors aging out of the workforce. A major amenity in Brunswick is the quality of life, including the prevalence of recreational amenities. Focusing on quality-of-life indicators, such as enhancing existing recreational amenities and focusing on making them more accessible, may be able to attract a younger population that is needed to (though it should be noted that this effort would need to be combined with an increase in the affordability and availability of housing in the area, discussed further in the Housing section of this Plan).

APPENDIX A: Brunswick Outdoor Recreation and Open Spaces



APPENDIX B: Annual Programming Provided by Brunswick Parks & Recreation Department

Edge Summer Baseball Camp
Youth Track & Field
Summer Day Camp Grades 1-6
Teen Summer Camp Grades 7-8
Youth Theatre Camp
Summer Day Camp with Before & After Care
MaineIax Girls Lacrosse Camp
Kids Kayaking Camp
Summer Art Classes
Golf for Kids
Kids on the Field Coed T-Ball
Boys Summer Basketball Camp
Girls Summer Basketball Camp
Studio Art Camp
Youth Field Hockey Grades 3 - 8 Camp
Mad Science Underground Explorers
Mad Science Spy Academy
Soccer Day Camp
I Love Bugs (Entymology) Camp
Intensive Teen Dance Camp
Top Rockers Youth Dance Camp
Girls Softball Camp
Maine Backyard Campout
Women's Softball League
Pickleball
Indoor Track Use
Adult Open Gym
Brunswick Youth Soccer League
Start Smart Soccer
Fall Cross Country Running
Fall Cross Country Trail Biking
Fall Little Striders Running
Travel Field Hockey
Fledgling Fundamental Hockey
Youth Field Hockey Grades 3-8
Mad Science Energize It
Pumpkin Decorating and Pizza Party
Halloween Window Painting Contest
Tent Or Treat
Virtual Halloween Costume Contest
Goblins Parade and Creepy Creature Party
Fall Top Rockers Hip Hop Dance Club
Fall Tiny Tapper Toes
Fall Outdoor Explorers

NYSCA Youth Soccer Coaches Certification Classes

Ski & Skate Sale

Summit Travel Basketball, Gr. 5 Girls

Summit Travel Basketball, Gr. 5 Boys

Summit Travel Basketball, Gr. 6 Boys

Summit Travel Basketball, Gr. 6 Girls

Winter Explorers Club

Girls Basketball, Grades 3 & 4

Boys Basketball, Grades 3 & 4

Girls Basketball, Grades 5 & 6

Boys Basketball, Grades 5 & 6

Coed Basketball, Grades 7 & 8

Smart Start Basketball

Fundamental Grade K Basketball

Kids on the Court Basketball

Elks National Boys and Girls Free Throw Contest

Travel Team, Grades 3 & 4, Boys Basketball

Travel Team, Grades 3 & 4, Girls Basketball

Cross Country Ski Lessons

Mad Science Innovation Nation

Soccer Foot Skills

Indoor Track Running Club

Mid Winter Classic Basketball Boys Tournament

Mid Winter Jr. High Girls Basketball Tournament

February Vacation Day Camp

Travel Team Basketball Tournament, Grades 3 & 4, Boys

Travel Team Basketball Tournament, Grades 3 & 4, Girls

Travel Team Basketball Tournament, Grades 5, Boys

Travel Team Basketball Tournament, Grades 5 Girls

Travel Team Basketball Tournament, Grades 6, Boys

Travel Team Basketball Tournament, Grades 6, Girls

NYSCA Youth Basketball Coaches Certification

Over 35 Men's Basketball League

Smart Start Baseball/Softball

Spring Cross Country Running

Spring Top Rockers Hip Hop Dance

Spring Tiny Tapper Toes

Mad Science (HBS)

Mad Science (KFS)

Adult Golf Lessons

Fly Fishing Workshop

Soccer Footskills

April Vacation Golf

April Vacation Day Camp

LEGO Deep Space Exploration

Bike Rodeo

Spring Cross Country Trail Biking

Spring Little Striders Running

Youth Indoor Golf

After School Care Grades 3-5

Spring Youth Volleyball

Wrestling Clinics

Special Olympics Adaptive Youth Basketball

Special Olympics Adaptive Soccer

***Lost Valley Learn to Ski/Snowboard Lessons**

***Brunswick Youth Football /CheeringLeague**

***Junior Rowing (Merrymeeting Rowing Club)**

***Cal Ripken Baseball/Softball**

***Babe Ruth Baseball**

***Seacoast United Soccer**

***Brunswick Soccer Club**

***Brunswick Youth Lacrosse**

***Midcoast Youth Hockey**

***Programs offered by Private Groups but Facilitated by Parks & Rec Dept**

APPENDIX C: Inventory of Amenities

The following tables include a list of areas and facilities maintained by the Town's Parks & Recreation Department along with the amenities at each facility (if available). This list does not include facilities located in Brunswick but maintained by other community or non-profit partners.

| Facility Name or Identifier | Baseball Field | Softball Field | Bank Fishing Area | Biking Trail (Paved) | Walking Trail ¹⁸ | Boat Access ¹⁹ | Community Garden | Water Service | Other |
|---|----------------|----------------|-------------------|----------------------|-----------------------------|---------------------------|------------------|---------------|-------|
| 250 th Anniversary Park | | | | | | X | | | |
| Androscoggin River Bicycle Path | | | | X | X | | | | |
| Barnes Landing | | | | | | X | | | |
| Bay Bridge Landing Wetland Park | | | | | X | X | | | |
| Capt. William A. Fitzgerald U.S.N. Recreation and Conservation Area | | | | | X | | | | |
| Chamberlain Avenue Esplanade | | | | | | | | | |
| Coffin Pond Recreation Area | | | X ²⁰ | | X | | | | |
| Coffin's Ice Pond | | | | | X | | | | |
| Cook's Corner Gateway | | | | | | | | | |
| Cox Pinnacle | | | | | X | | | | |
| Crimmins Field | | | | | | | | | |

¹⁸ Unless otherwise noted, walking trails provided are also multi-use paths allowing for other uses such as mountain biking, cross country skiing, and snowshoeing (as weather permits).

¹⁹ See the Access to Waterbodies section, above, for a more detailed description of each boat launch.

²⁰ Fishing is restricted to youth under 16 years of age only. The outer pond is often stocked with brook trout by the Maine Department of Inland Fisheries and Wildlife.

²¹ Available at either the elementary school on McKeen Street or the Brunswick Junior High School on Columbia Avenue.

| | | | | | | | | | |
|---|---|---|--|--|-----------------|---|--|---|--|
| Edwards Field | X | X | | | X (paved track) | | | | |
| Great Island Chain | | | | | | | | | |
| Greater Commons | | | | | X | | | | |
| Hambleton Avenue Playground | | | | | | | | | |
| Kate Furbish Preserve | | | | | X | | | | |
| Lamb Park | | | | | X | | | | |
| Lishness Park | X | X | | | X | | | | |
| Longfellow Playground ²³ | | | | | | | | | |
| Lower Mall | | | | | | | | | |
| Maine Street Flowers | | | | | | | | | |
| Maine Street Station Park | | | | | | | | | |
| Maquoit Bay Conservation Land | | | | | X | | | | |
| Maquoit Landing (Wharton Point) | | | | | | X | | | |
| McKeen Landing | X | | | | X | | | | |
| Mere Point Boat Launch | | | | | | X | | | |
| Merrymeeting Dog Park | | | | | | | | X | |
| Mill Street Canoe Portage ²⁴ | | | | | | X | | | |

²² At Town Commons, accessible via connecting trail system.

²³ Longfellow Playground was closed to the public at the time of plan drafting.

²⁴ Note: Park is only open during periods when floatation barriers across the river are in place to prevent downstream travel towards the hydroelectric dam. Barriers are installed in mid to late May, depending on river flows, and are removed in the late fall. The facility remains closed to the launching of watercraft of any kind when the barriers are not installed.

| | | | | | | | | | |
|-------------------------------|--|--|---|--|------------------------|---|---|---|--|
| Mill Street Lot | | | | | | | | | |
| Nathaniel Davis Park | | | | | | | | | |
| Pejepscot Dam Recreation Area | | | | | | X | | | |
| Pinette's Landing | | | | | | | | | |
| Pleasant Street Gateway | | | | | | | | | |
| Princes Point Landing | | | X | | | X | | | |
| Recreation Center | | | | | X (indoor paved track) | | | | |
| Sawyer Park | | | | | | X | | | |
| Senior Garden | | | | | | | X | X | |
| Shulman Park | | | | | | | | | |
| Simpson's Point Landing | | | | | | X | | | |
| Spring and McKeen Street Lot | | | | | X (pedestrian path) | | | | |
| Stowe Field | | | | | | | | | |
| Stowe Gymnasium | | | | | | | | | |
| Swinging Bridge Park | | | | | X | | | | |
| Town Commons | | | | | X | | | | |
| Upper Mall | | | | | X | | | | |
| Water Street Boat Landings | | | | | | X | | | |
| Wildwood Field | | | | | | | | | |

| Facility Name or Identifier | Swimming Area | Off Leash Area | Picnic Area | Playground Equipment | Restrooms | Skate Park | Soccer / Lacrosse Field | Tennis Court | Picnic Court |
|-----------------------------|---------------|----------------|-------------|----------------------|-----------|------------|-------------------------|--------------|--------------|
|-----------------------------|---------------|----------------|-------------|----------------------|-----------|------------|-------------------------|--------------|--------------|

²⁵ Off-street parking is available at Harriet Beecher Stowe Elementary School.

| | | | | | | | | | |
|--|---|--|---|---|--------------------|--|---|--|--|
| 250 th Anniversary Park | | | | | | | | | |
| Androscoggin River Bicycle Path | | | | | X | | | | |
| Barnes Landing | | | | | | | | | |
| Bay Bridge Landing Wetland Park | | | | | | | | | |
| Capt. William A. Fitzgerald U.S.N. Recreation and Conservation Area | | | | | | | | | |
| Chamberlain Avenue Esplanade | | | | | | | | | |
| Coffin Pond Recreation Area | X | | X | X | X (summer only) | | | | |
| Coffin's Ice Pond | | | | | | | | | |
| Cook's Corner Gateway | | | | | | | | | |
| Cox Pinnacle | | | | | | | | | |
| Crimmins Field | | | | | | | X | | |
| Edwards Field | | | | X | X | | | | |
| Great Island Chain | | | | | | | | | |
| Greater Commons | | | | | | | | | |
| Hambleton Avenue Playground | | | | X | | | | | |
| Kate Furbish Preserve | | | | | | | | | |
| Lamb Park | | | | | | | | | |
| Lishness Park | | | | | X | | X | | |

| | | | | | | | | | |
|---|--|---|---|---|---|--|---|--|--|
| Longfellow Playground | | | | | | | | | |
| Lower Mall | | | | | | | | | |
| Maine Street Flowers | | | | | | | | | |
| Maine Street Station Park | | | | | | | | | |
| Maquoit Bay Conservation Land | | | | | | | | | |
| Maquoit Landing (Wharton Point) | | | | | | | | | |
| McKeen Landing | | | | X | | | | | |
| Mere Point Boat Launch | | | X | | X | | | | |
| Merrymeeting Dog Park | | X | | | | | | | |
| Mill Street Canoe Portage ¹⁸ | | | | | | | | | |
| Mill Street Lot | | | | | | | | | |
| Nathaniel Davis Park | | | | X | | | | | |
| Pejepscot Dam Recreation Area | | | | | | | | | |
| Pinette's Landing | | | | | | | | | |
| Pleasant Street Gateway | | | | | | | | | |
| Princes Point Landing | | | | | | | | | |
| Recreation Center | | | | | X | | | | |
| Sawyer Park | | | X | | X | | | | |
| Senior Garden | | | | | | | | | |
| Shulman Park | | | | | X | | X | | |

| | | | | | | | | | |
|------------------------------------|--|--|--|--|---|--|---|--|--|
| Simpson's Point Landing | | | | | | | | | |
| Spring and McKeen Street Lot | | | | | | | | | |
| Stowe Field | | | | | | | X | | |
| Stowe Gymnasium | | | | | X | | | | |
| Swinging Bridge Park | | | | | | | | | |
| Town Commons | | | | | | | | | |
| Upper Mall | | | | | | | | | |
| Water Street Boat Landings | | | | | X | | | | |
| Wildwood Field | | | | | X | | X | | |

