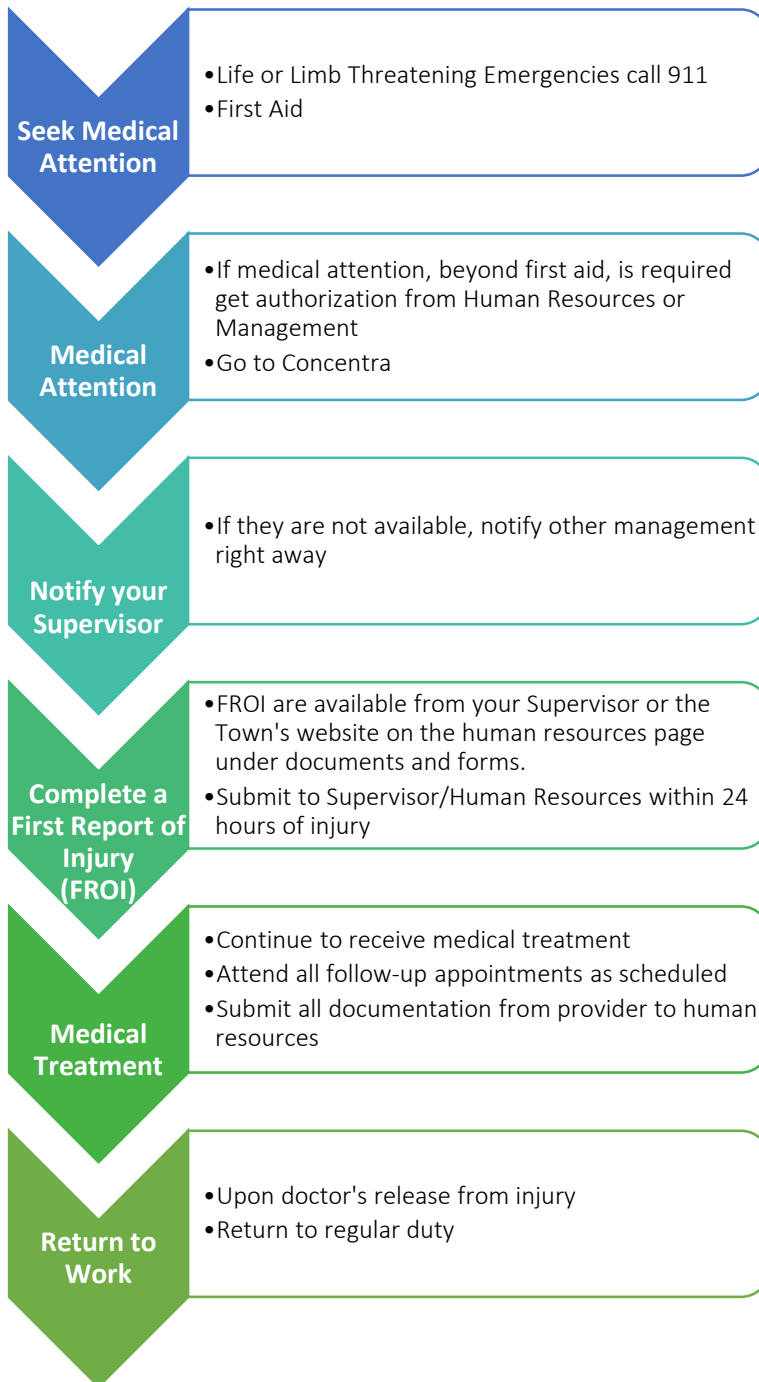


Procedure for injured employees



Contact Information

Human
Resources
P: 725-6653
F: 725-6663

MMA Claims
Department
1-800-590-5583
After Hours
Weekend
Emergency
207-624-0182
Or
207-624-0183

Concentra
11 Medical Center Dr.
Brunswick, ME
P: 207-725-2697
F: 729-4719

Procedure for Supervisors

